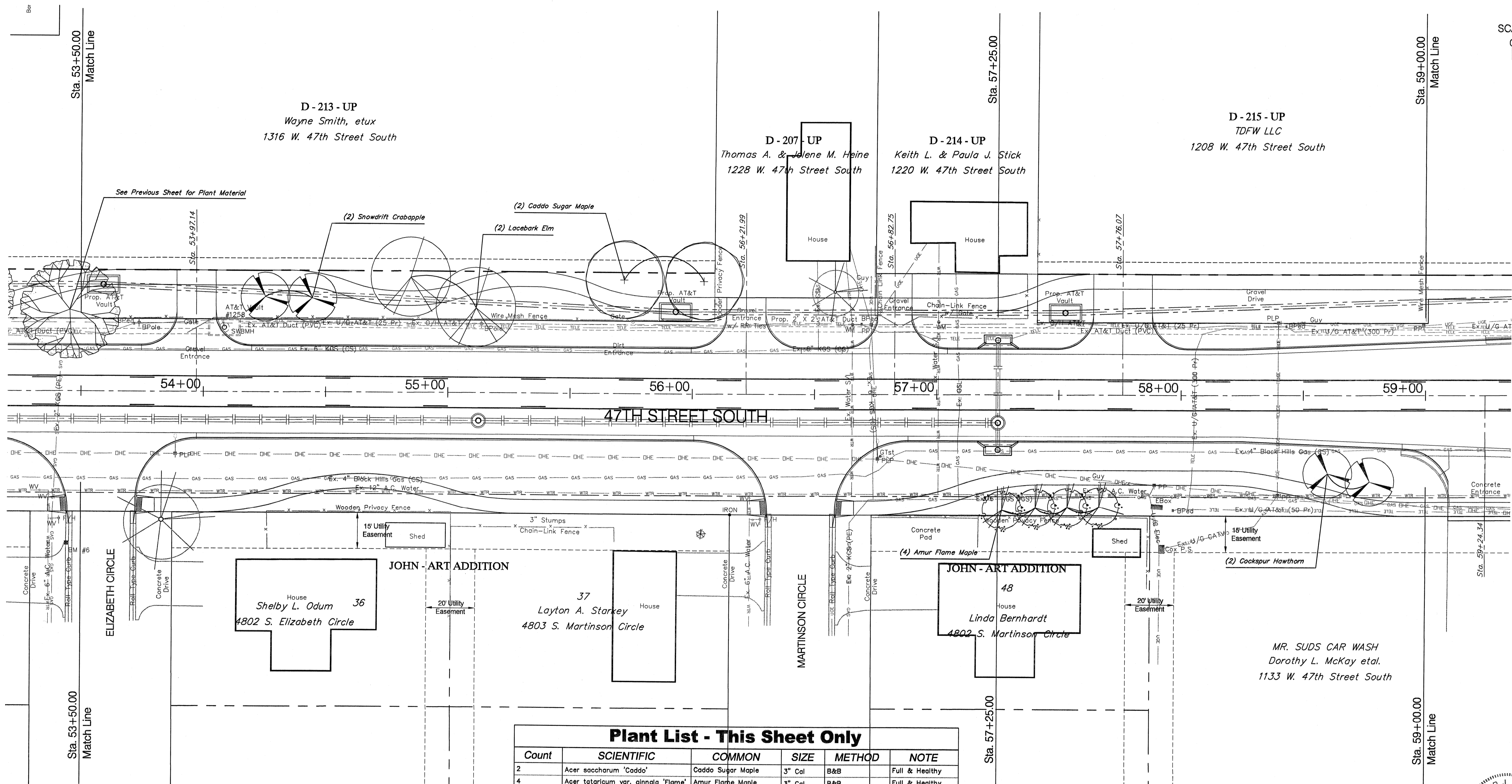
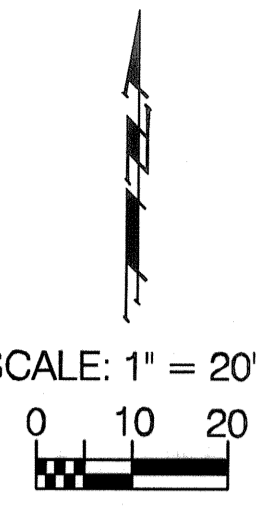


BENCHMARK:
 BM #6 - "C" Cut into Top of Curb in the Southwest Corner
 of the Intersection of 47th Street South and
 Elizabeth Circle
 Sta. 53+44, 63' Rt.
 Elev. = 1273.40 (MSL)

FHWA REGION NO.	STATE	PROJECT NO.	FISCAL YEAR	SHEET NO.	TOTAL SHEETS
7	KANSAS	87 N-0394-01	2010	106	129



Plant List - This Sheet Only

Count	SCIENTIFIC	COMMON	SIZE	METHOD	NOTE
2	Acer saccharum 'Caddo'	Caddo Sugar Maple	3" Cal	B&B	Full & Healthy
4	Acer tataricum var. ginnala 'Flame'	Amur Flame Maple	3" Cal	B&B	Full & Healthy
2	Crataegus crusgalli var. inermis	Cockspur Hawthorn	3" Cal	B&B	Full & Healthy, Thornless
2	Malus 'Snowdrift'	Snowdrift Crabapple	3" Cal	B&B	Full & Healthy
2	Ulmus parvifolia 'Allee'	Lacebark Elm	3" Cal	B&B	Full & Healthy

