

REMOVE TREES ONLY AS NECESSARY FOR CONSTRUCTION AND ONLY AS DIRECTED BY THE FIELD ENGINEER. PLANT 5 SYCAMORES (BLOODGOOD LONDON PLANETREE) AND 5 AUTUMN BLAZE MAPLES, ALL 2.5" CALIPER TREES. LOCATIONS TO BE COORDINATED WITH CITY FIELD ENGINEER AND HOMEOWNER.

LINE LOCATION MAY BE FIELD ADJUSTED TO PROTECT TREES WITH THE APPROVAL OF THE FIELD ENGINEER.

CONTRACTOR SHALL CONTACT AT&T SUPERVISOR, MARSHA MATHES AT 316-651-7548 TO ARRANGE TO HAVE A TEMPORARY DROP PLACED DURING CONSTRUCTION

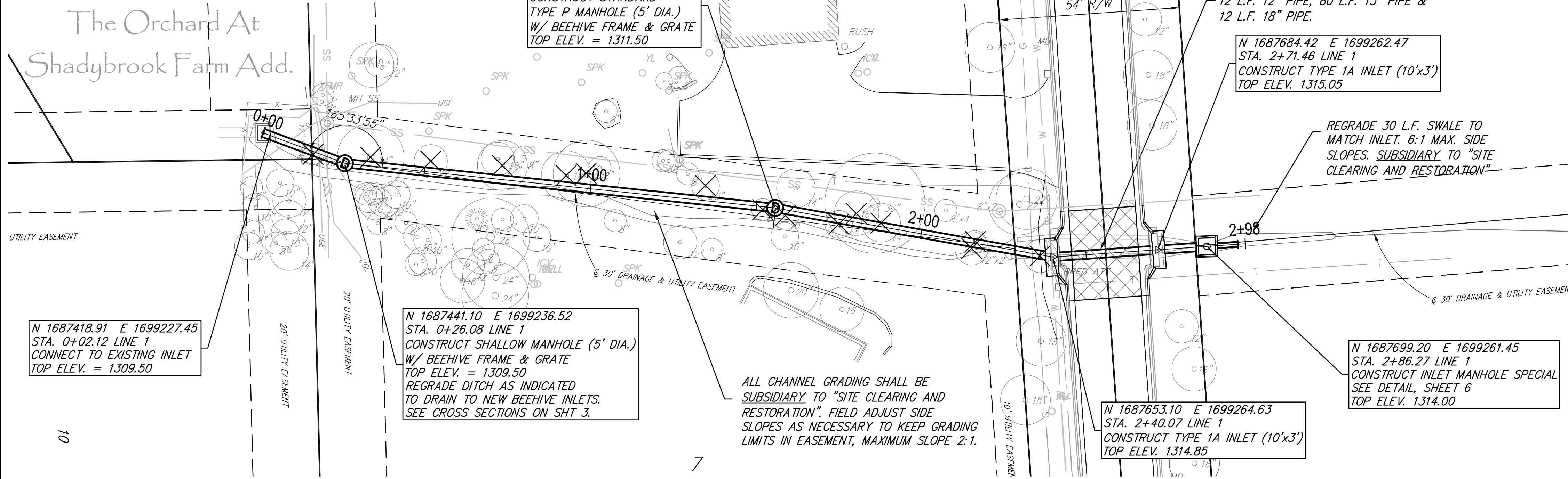
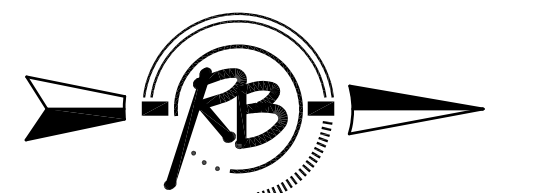
ALL BACKFILL TO BE CLEAN TOPSOIL.

The Orchard At  
Shadybrook Farm Add.

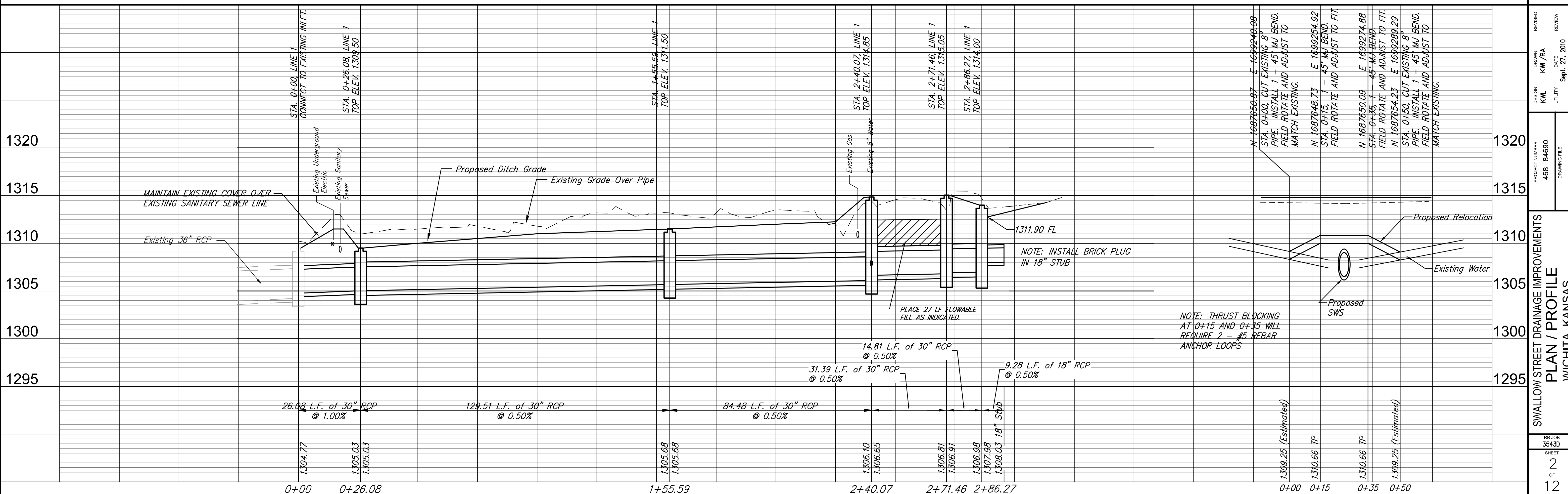
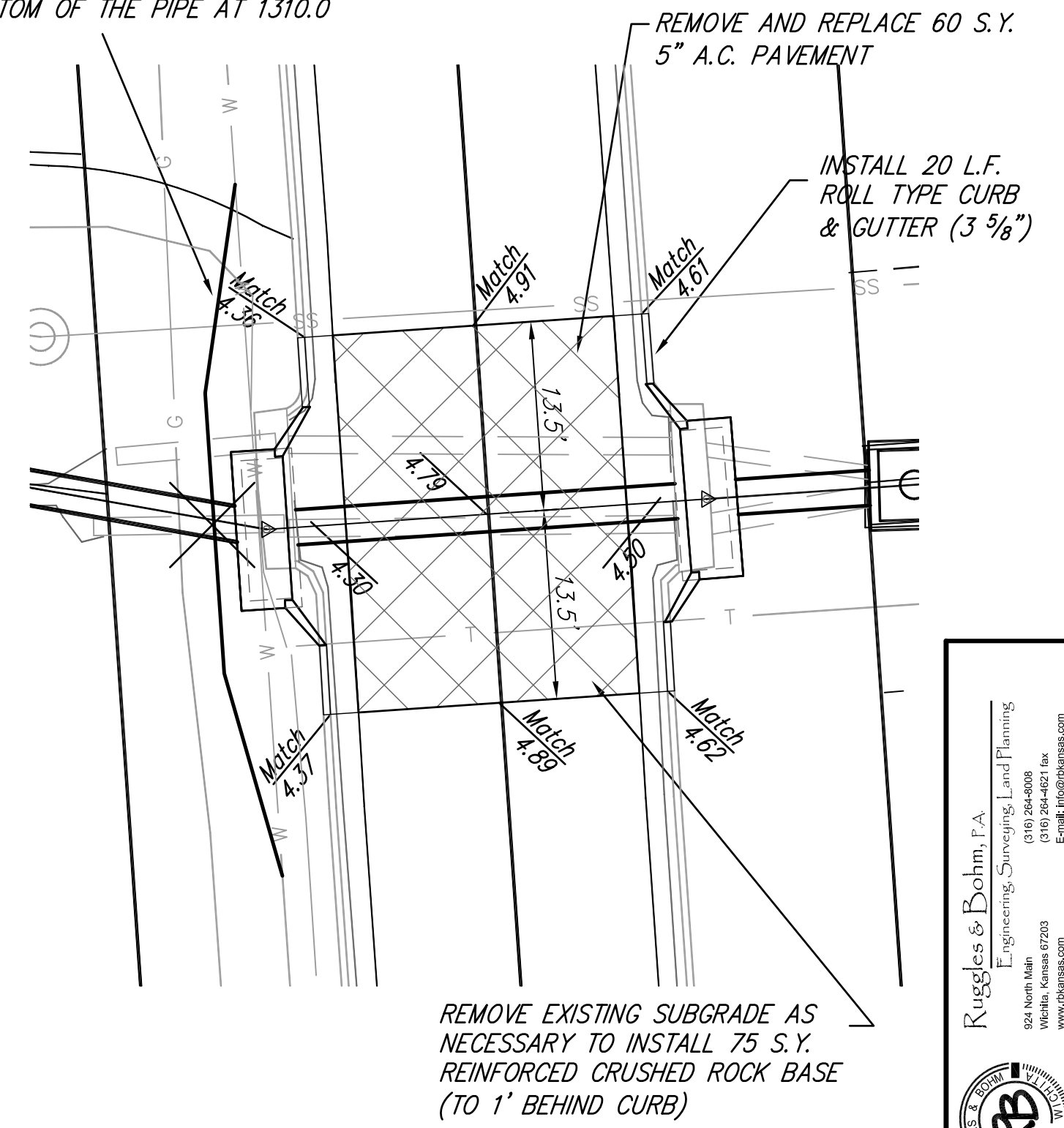
Shadybrook Farm Add.



TREES TO BE REMOVED WITH CONSTRUCTION



WATERLINE TO BE RELOCATED BY CITY OF WICHITA PRIOR TO CONSTRUCTION. FIELD ROTATE 4 - 45' MJ BENDS AS NECESSARY TO RELOCATE PIPE 20' SOUTH OF CENTERLINE WITH THE BOTTOM OF THE PIPE AT 1310.0



Kingless & Bohm, P.A.  
Engineering, Surveying, Land Planning  
924 North Main  
Wichita, Kansas 67203  
(316) 264-0808  
www.kinglessandbohm.com



PROJECT NUMBER: 468-84690  
DRAWING FILE: SWALLOW STREET DRAINAGE IMPROVEMENTS PLAN / PROFILE WICHITA, KANSAS  
DESIGN: KWL  
DATE: Sept. 27, 2010  
REVISION: REVIEW

RB JOB: 35430  
SHEET: 2 OF 12