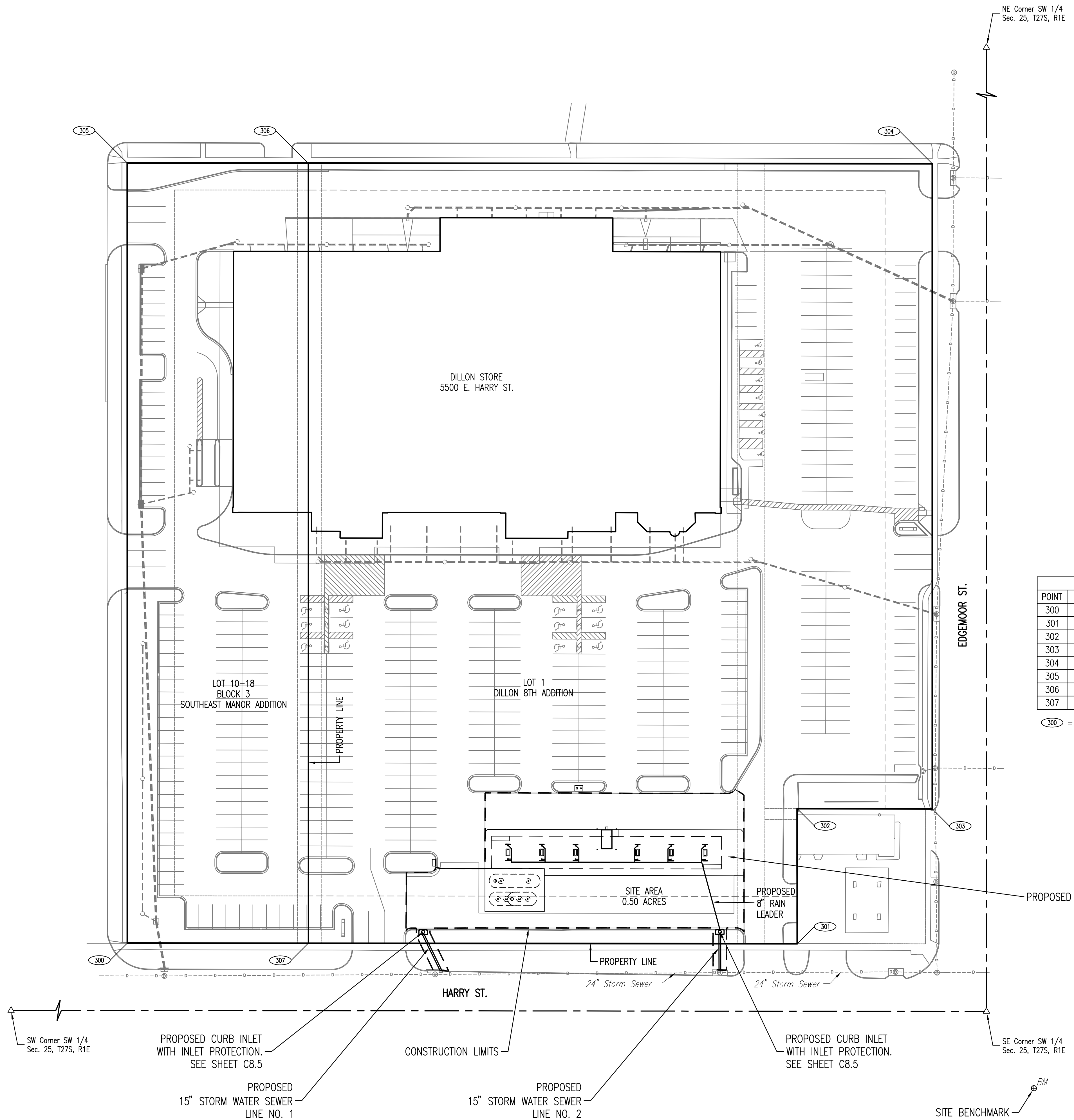


Saved: 05-26-2010 1:57:56 PM by AEE
 Plot Scale: 1"=40' 06-01-2010 2:08:19 PM by AEE
 G:\2005\06742\096\PPS\06742-096-C8.2-SWS.kwd



NE Corner SW 1/4
 Sec. 25, T27S, R1E

SE Corner SW 1/4
 Sec. 25, T27S, R1E

SW Corner SW 1/4
 Sec. 25, T27S, R1E

SCALE: 1" = 40'

LEGEND

SITE BENCHMARK

CITY OF WICHITA BENCH MARK DISC.
 35.2' EAST OF THE CENTER LINE OF EDGEMOOR
 56.70' SOUTH OF THE CENTER LINE OF HARRY
 4.50' EAST OF BACK OF CURB
 6.50' SOUTH OF BACK OF CURB

ELEV. = 1333.00 NGVD29

COORDINATE LIST

| POINT | NORTH | EAST | MONUMENT |
|-------|----------------|----------------|----------|
| 300 | 1,678,119.3743 | 1,667,340.2557 | NONE |
| 301 | 1,678,118.8607 | 1,667,836.2566 | CROSS |
| 302 | 1,678,218.9326 | 1,667,836.2478 | NAIL |
| 303 | 1,678,218.7134 | 1,667,936.2735 | MKEC |
| 304 | 1,678,696.6294 | 1,667,936.2735 | 1/2" IP |
| 305 | 1,678,697.1961 | 1,667,340.2035 | CROSS |
| 306 | 1,678,697.0418 | 1,667,474.1467 | 3/4" IP |
| 307 | 1,678,119.2356 | 1,667,474.2356 | CROSS |

300 = COORDINATE POINT NO.

GENERAL NOTES

- ALL CONSTRUCTION AND MATERIALS TO COMPLY WITH CITY OF WICHITA SPECIFICATIONS AND STANDARDS.
- ALL ELEVATIONS SHOWN ARE NGVD 29 DATUM.
- THE CONTRACTOR SHALL LIMIT THE EXTENT OF TRENCH TO REMAIN OPEN OVERNIGHT AND WEEKENDS TO LESS THAN 50 FEET.
- AT LEAST 72 HOURS PRIOR TO BEGINNING EXCAVATION (EXCLUDING WEEKENDS AND HOLIDAYS), THE CONTRACTOR SHALL CONTACT THE KANSAS ONE-CALL SYSTEM, A UTILITY LOCATION SERVICE, AT (316) 687-2470 TO REQUEST THE LOCAL UTILITY COMPANIES MARK ANY EXISTING LINES WITHIN THE PROJECT AREA.
- UNDERGROUND UTILITY SERVICE LINES AND OVERHEAD UTILITY POLE LINES ARE TO BE ADJUSTED AS NECESSARY BY OTHERS PRIOR TO CONSTRUCTION UNLESS THE PLANS SPECIFICALLY CALL FOR THEIR ADJUSTMENT BY THE CONTRACTOR OR UNLESS THE PLANS SPECIFICALLY IDENTIFY A UTILITY TO BE ADJUSTED BY ITS OWNER DURING CONSTRUCTION. EXISTING UTILITIES AND THEIR LOCATIONS, AS SHOWN ON THE PLANS, REPRESENT THE BEST INFORMATION OBTAINABLE FOR THE DESIGN. THE CONTRACTOR WILL BE REQUIRED TO WORK AROUND EXISTING UTILITIES WITHIN THE RIGHT-OF-WAY WHICH DO NOT CONFLICT WITH PROPOSED CONSTRUCTION.
- THE CONTRACTOR SHALL BE RESPONSIBLE FOR PRESERVING PROPERTY IRONS. THE CONTRACTOR WILL BE REQUIRED TO RE-ESTABLISH ANY PROPERTY IRONS WHICH ARE DAMAGED OR DESTROYED BY HIS CONSTRUCTION OPERATIONS. SUCH IRONS SHALL BE RE-ESTABLISHED BY A LICENSED LAND SURVEYOR IN ACCORDANCE WITH STATE LAWS.
- RUBBLE FROM THE REMOVAL OF MISCELLANEOUS STRUCTURES INCLUDING ANY TREES REMOVED, TREE TRIMMINGS, AND EXCESS EXCAVATION WHICH IS TO BE WASTED SHALL BE DISPOSED OF ON SITES PROVIDED BY THE CONTRACTOR. THESE SITES SHALL ALSO BE APPROVED BY THE ENGINEER AS TO SUITABILITY, APPEARANCE, AND SITE LOCATION. LOCATIONS THAT, IN THE OPINION OF THE ENGINEER, WILL LEAVE AN UNSIGHTLY APPEARANCE WILL NOT BE APPROVED. ALL DISPOSAL SITES MUST BE APPROVED BY THE KANSAS DEPARTMENT OF HEALTH AND ENVIRONMENT. MATERIAL EITHER STOCKPILED OR DISPOSED OF IN A FLOOD PLAIN WILL REQUIRE A KANSAS STATE BOARD OF AGRICULTURE PERMIT. ANY MATERIAL DUMPED IN WATERS OF THE UNITED STATES OR WETLANDS IS SUBJECT TO U.S. CORPS OF ENGINEERS PERMITTING REGULATIONS. ANY MATERIAL BURIED OR STOCKPILED BEYOND APPROVED CONSTRUCTION LIMITS MAY REQUIRE ARCHAEOLOGICAL INVESTIGATIONS UNLESS BURIED IN A PREVIOUSLY APPROVED DISPOSAL LOCATION.
- THE CONTRACTOR SHALL AVOID REMOVAL OR TRIMMING OF ANY TREES OR SHRUBS WHERE POSSIBLE. WHERE THE CONTRACTOR BELIEVES THE REMOVAL OR TRIMMING IS UNAVOIDABLE, HE SHALL COORDINATE SUCH WORK WITH THE ENGINEER. COSTS FOR TREE/SHRUB REMOVAL AND TRIMMING REGARDLESS OF SIZE SHALL BE CONSIDERED SUBSIDIARY TO THE PROJECT.
- THE CONTRACTOR SHALL GIVE ALL PROPERTY OWNERS AND/OR TENANTS OF DEVELOPED PROPERTY ABUTTING THE CONSTRUCTION OF THIS PROJECT A MINIMUM OF TEN (10) DAYS ADVANCE NOTICE PRIOR TO START OF CONSTRUCTION.
- INTERURBAN TRAFFIC GENERATED OUTSIDE THE PROJECT AREA AND LOCAL BUSINESS OR RESIDENTIAL TRAFFIC GENERATED WITHIN THE PROJECT AREA ARE TO BE CARRIED THROUGH CONSTRUCTION AS FURTHER PROMULGATED BY PROJECT SPECIAL PROVISIONS. THE CONTRACTOR SHALL UTILIZE BARRICADES, SIGNS, GUARDS, AND FLAGMEN IN ACCORDANCE WITH THE MANUAL ON UNIFORM TRAFFIC CONTROL DEVICES.
- THE CONTRACTOR SHALL INSTALL AND/OR MAINTAIN EROSION CONTROL METHODS AS NEEDED. SEE SHEET 8.6 FOR DETAILS. THE FOLLOWING QUANTITIES ARE ESTIMATED, AND SHOULD BE CONSIDERED THE MINIMUM EFFORT REQUIRED. THE GENERAL LOCATION OF THE REQUIRED EROSION CONTROL IS ILLUSTRATED ON THE PROJECT STORM WATER POLLUTION PREVENTION PLAN. THE SANITARY SEWER CONTRACTOR SHALL BE RESPONSIBLE FOR MAINTAINING THE EROSION CONTROL SHOWN THROUGH THE COMPLETION OF THIS PROJECT. INSTALLATION OF THESE BMP'S DOES NOT RELIEVE THE CONTRACTOR OF THE RESPONSIBILITY OF ABATING SOIL EROSION.
- NOTE FROM RMH REGRADING SEEDING/SODDING OF DISTURBED AREA (TRENCH AROUND SWS STRUCTURES).

REVISIONS

| No. | DESCRIPTION | DES. DRAWN BY | DATE |
|-----|-------------|---------------|------|
| | | | |
| | | | |
| | | | |
| | | | |

Project #: 36-06742-096-0645
 Designed By: RMH
 Drawn By: AEE
 Checked By:
 Date: MAY 2010
 Scale:
 Disk File:
 Model:

Address: 5500 E. HARRY ST.
 DILLONS #96 WICHITA, KS

KEY MAP & GENERAL NOTES

Drawing No.:
C8.2

**DILLONS STORE #96 FUEL CENTER
 PRIVATE STORM WATER SEWER EXTENSION**
 JAMES L. ARMOUR, P.E. - CITY ENGINEER
 CITY OF WICHITA PRIVATE PROJECT NO. 2054 PPS (607861)

Professional Engineering Consultants, P.A.
 303 S. TOPSIA - WICHITA, KANSAS 67202
 316.262.5651 • FAX 316.262.5652

Dillon Stores
 2700 East Fourth
 Hutchinson, KS 67501
 Phone (316) 666-5511

The Kroger Co.
 988 Quaker Street, Suite 210
 Hutchinson, KS 67501
 Phone (303) 393-4127
 Fax (303) 393-0404