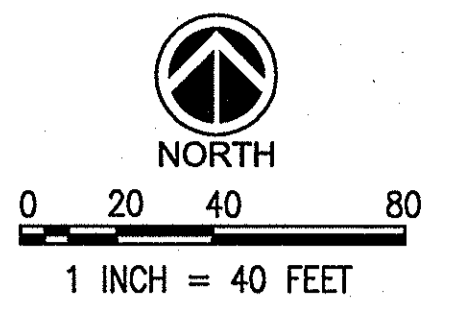


SITE DATA:
 DILLONS STORE #96
 5500 E HARRY ST
 WICHITA, KS 67218
 ZONING: LC (LIMITED COMMERCIAL)
 W/ PROTECTIVE OVERLAY
 PARCEL SIZE: 7.5± ACRES

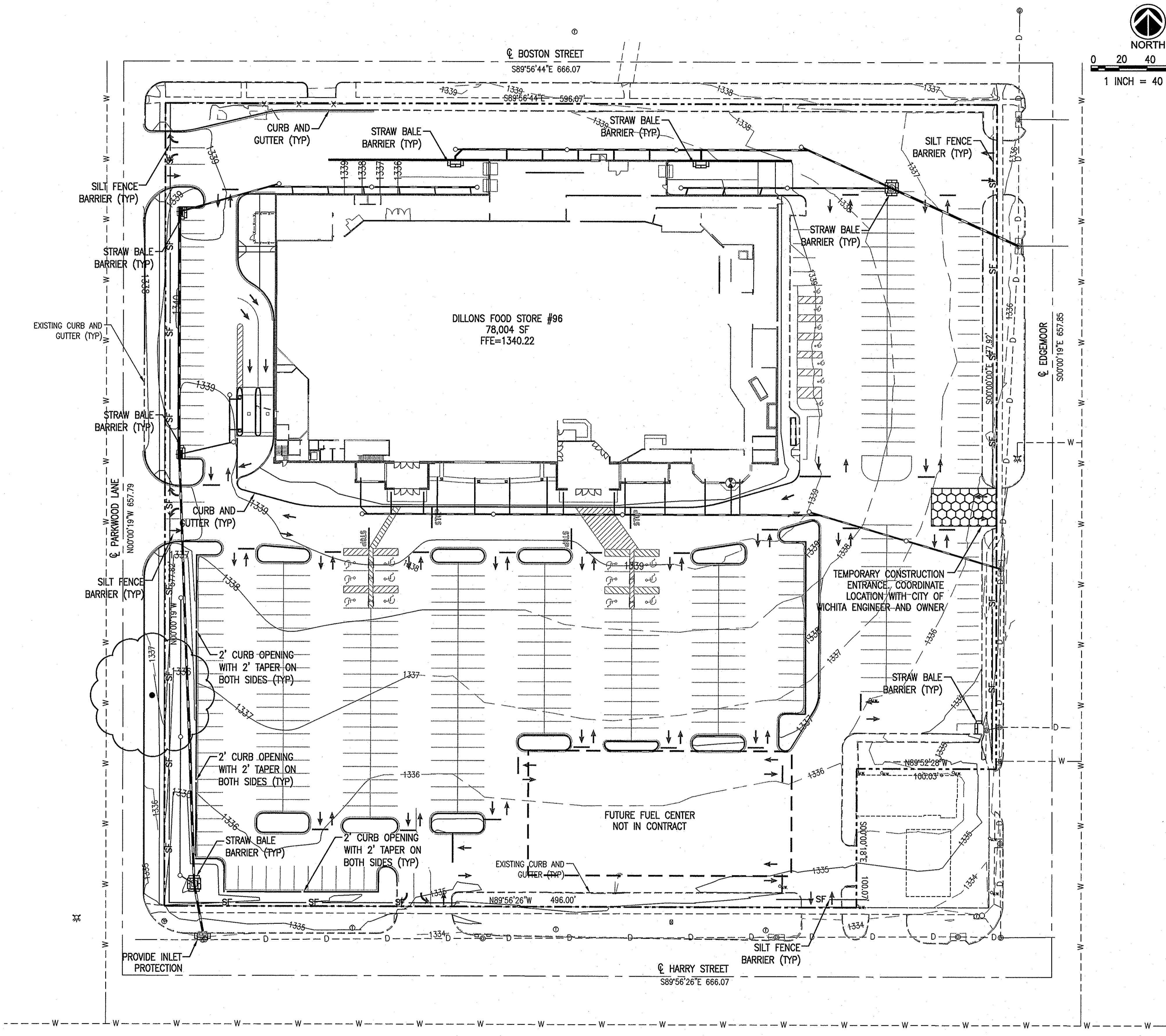


EROSION CONTROL LEGEND	
	CONSTRUCTION EGRESS
	SILT FENCE BARRIER
	INLET PROTECTION

- EROSION AND SEDIMENTATION CONTROL NOTES:**
- ALL NEWLY CUT AND/OR FILLED AREAS LACKING ADEQUATE VEGETATION SHALL BE SOLID SODDED AS REQUIRED TO EFFECTIVELY PREVENT SOIL EROSION.
 - SILT FENCES, HAY BALES, AND OTHER BEST MANAGEMENT PRACTICES SHALL BE USED AS SHOWN AND AS DIRECTED BY THE ENGINEER TO CONTROL SOIL EROSION.
 - THE CONTRACTOR SHALL PROVIDE AND MAINTAIN EROSION CONTROL DURING CONSTRUCTION BY THE PLACEMENT OF SILT FENCES, SEDIMENT INLET TRAPS, HAY BALES, AND OTHER BEST MANAGEMENT PRACTICES WHERE NECESSARY TO PREVENT DOWNSTREAM SILTATION OF ANY DITCHES, PIPES, DRAINAGE STRUCTURES, OR ADJACENT PROPERTIES. THE CONTROLS SHOWN ON THE PLAN ARE THE MINIMUM REQUIRED AND THE CONTRACTOR SHALL PROVIDE ANY ADDITIONAL EROSION CONTROL AS NECESSARY OR AS DIRECTED BY THE ENGINEER.
 - THE CONTRACTOR IS RESPONSIBLE FOR COMPLYING TO THE KANSAS DEPARTMENT OF HEALTH AND ENVIRONMENT STORM WATER CONSTRUCTION GENERAL PERMIT FOR ALL EROSION CONTROL DURING CONSTRUCTION ACTIVITIES.
 - THE CONTRACTOR IS RESPONSIBLE FOR MAINTAINING EROSION CONTROL DEVICES AND REPORTING ANY MAINTENANCE AS REQUIRED BY THE KOHE STORM WATER CONSTRUCTION GENERAL PERMIT DURING CONSTRUCTION ACTIVITIES.
 - PROVISIONS SHALL BE MADE TO PROTECT DOWNSTREAM WATERCOURSES (I.E., STORM SEWER SYSTEMS, DITCHES, WETLANDS, ETC.) FROM SEDIMENT RUNOFF DEVELOPED FROM THE CONSTRUCTION PROCESS. PROVISIONS INCLUDE, BUT ARE NOT LIMITED TO, STRUCTURAL CONTROLS SUCH AS SILT FENCINGS, GEOTEXTILE FABRIC PROTECTION OF STORM SEWERS, HAY BALES, DIKES AND SANDBAG BERMS, AND/OR VEGETATION CONTROLS SUCH AS SEEDING OR EXISTING VEGETATIVE BUFFER STRIPS (MINIMUM 25 FEET WIDE).
 - PRIOR TO START OF CONSTRUCTION, CONTRACTOR SHALL INSTALL EROSION AND SEDIMENTATION CONTROLS AT LOCATIONS SHOWN ON PLANS.
 - ABSOLUTELY NO DIRT, MUD, DUST OR SEDIMENT SHALL MOVE INTO ANY STORM DRAIN APPURTENANCES AND PUBLIC STREETS.
 - CONTRACTOR SHALL PERFORM DAILY STREET CLEANING ON ROADS AND STREETS ADJACENT TO THE PROJECT WHICH ARE USED AS ACCESS ROUTES FOR CONSTRUCTION TRAFFIC IF DIRT AND MUD ARE NOT ADEQUATELY REMOVED FROM VEHICLES AT THE CONSTRUCTION EXIT. WASHING OF STREETS IS PROHIBITED.
 - LOCATE FUEL/MATERIAL STORAGE AREAS AWAY FROM STORM WATER CONVEYANCE SYSTEMS. USE A MINIMUM 60 MIL POLYETHYLENE LINER UNDER ABOVE GROUND STORAGE TANKS. USE 2 FOOT HIGH BERMS AROUND FUEL STORAGE AREAS.
 - CONTRACTOR IS RESPONSIBLE FOR COMPLYING WITH ALL ENVIRONMENTAL LAWS.
 - CONTRACTOR IS RESPONSIBLE FOR DISPOSING OF FUELS, MATERIALS, AND CONTAMINATED EXCAVATIONS IN A LEGALLY APPROVED MANNER.
 - CONTRACTOR SHALL INSPECT ALL STRUCTURAL CONTROLS WITHIN 24 HOURS AFTER ANY STORM EVENT (THAT MEETS OR EXCEEDS 0.5 INCHES OF RAINFALL IN A 24 HOUR PERIOD). DURING PROLONGED RAINFALL EVENTS, CONTRACTOR SHALL INSPECT STRUCTURAL CONTROLS ON A DAILY BASIS. AT A MINIMUM, STRUCTURAL CONTROLS SHOULD BE INSPECTED ONCE PER MONTH. A QUALIFIED REPRESENTATIVE OF THE CONTRACTOR, AS APPROVED BY THE OWNER, SHALL PROVIDE THESE INSPECTIONS. SHOULD CONTROLS BECOME INEFFECTIVE, NECESSARY REPAIRS SHALL BE PERFORMED TO RETURN THE INTEGRITY OF THE STRUCTURAL CONTROLS.
 - CONTRACTOR SHALL MAINTAIN, REPAIR AND/OR REPLACE DAMAGED EROSION AND SEDIMENTATION CONTROL SYSTEMS THROUGHOUT THE DURATION OF THE CONTRACT.
 - CONTRACTOR WILL PROVIDE PROTECTED STORAGE AREAS FOR CHEMICALS, PAINTS, SOLVENTS, FERTILIZERS AND OTHER POTENTIALLY TOXIC MATERIALS.
 - EQUIPMENT STAGING AREA TO BE DESIGNATED BY CONTRACTOR AND APPROVED BY OWNER PRIOR TO CONSTRUCTION.
 - THE CONTRACTOR SHALL PROVIDE ALL EROSION CONTROL NECESSARY FOR UTILITY CONSTRUCTION, EVEN IF THE UTILITIES ARE OUTSIDE THE LIMITS OF GRADING OPERATIONS.
 - SEDIMENT WILL BE REMOVED FROM THE UPSTREAM FACE OF THE SILT FENCE WHEN IT REACHES A MAXIMUM DEPTH OF 1/3 OF THE FENCE'S HEIGHT PER EPA DOCUMENT 823-R-00-04. THE FENCE WILL BE REPLACED AS NECESSARY TO MAINTAIN A BARRIER.
 - THE CONTRACTOR SHALL SUBMIT PHASED EROSION CONTROL PLANS TO THE ENGINEER FOR REVIEW AS NEEDED TO CONTROL SEDIMENT AND EROSION DURING CONSTRUCTION.
 - TEMPORARY SEEDING MAY BE REQUIRED IN ADDITION TO PERMANENT SEEDING TO ASSIST IN COMPLYING WITH THE CONSTRUCTION GENERAL PERMIT.
 - EROSION AND SEDIMENT CONTROL DEVICES WILL NEED TO BE MAINTAINED THROUGHOUT THE PROJECT UNTIL SUCH TIME AS DETERMINED BY THE CITY OF WICHITA INSPECTOR ASSIGNED TO THIS SITE.

CONSTRUCTION ENTRANCE NOTE

CONTRACTOR TO PROVIDE A TEMPORARY STABILIZED CONSTRUCTION ENTRANCE TO MINIMIZE SEDIMENT DEPOSITING ON CITY STREETS. TEMPORARY STABILIZED CONSTRUCTION ENTRANCE TO CONFORM TO CITY OF WICHITA'S MINIMUM STANDARDS (SEE SHEET 10 OF 11). CONTRACTOR TO COORDINATE LOCATION OF TEMPORARY STABILIZED CONSTRUCTION ENTRANCE WITH CITY OF WICHITA, ENGINEER, AND OWNER.



1 EROSION CONTROL PLAN
 SCALE: 1"=40'

Pickering Firm Incorporated
 Architecture • Engineering • Planning • Surveying
 6775 Lenox Center Court, Suite 300
 Memphis, TN 38115
 901.726.0810

DILLONS FOOD STORE #96
 PROJECT NAME
EROSION CONTROL PLAN
 SHEET TITLE

GTW	GTW	CLM
02-03-10	21047-08	4 OF 11
DATE	JOB NUMBER	SHEET