

GLMV Architecture

420 S. Emporia, Wichita, KS 67202
Tel: (316) 265-9367

125 S. Washington, Wichita, KS 67202
Tel: (316) 262-0451

www.glmv.com

FOR INFORMATION ONLY
CONTRACTOR TO OBTAIN COPY OF
RECORDED PLAT PRIOR TO BEGINNING
CONSTRUCTION.

GODDARD SCHOOL 2ND ADDITION

AN ADDITION TO WICHITA, SEDGWICK COUNTY, KANSAS



NOT TO SCALE

• = 1/2" REBAR W/PEC CAP UNLESS OTHERWISE NOTED

COORDINATE LIST		
POINT	NORTH	EAST
5000	17,358.7524	19,975.1404
5001	17,360.8872	22,608.5906
5002	20,003.9309	22,631.1564
5003	22,630.8183	22,649.2920
5004	22,633.7019	20,020.9751
5005	19,999.9955	19,999.9959
5006	17,360.3461	21,941.0510
5007	17,483.5867	21,940.9511
5008	17,430.6847	22,609.1866
5009	19,653.9436	22,628.1683
5010	19,655.8219	22,408.1763
5011	19,705.8200	22,408.6032
5012	19,705.3340	22,083.6036
5013	20,084.9831	21,861.8481
5014	20,085.8056	22,411.8474
5015	20,440.7927	22,414.8782
5016	20,438.9205	22,634.1595
5017	21,021.8566	22,638.1840
5018	21,022.7371	21,838.1705
5019	20,402.7365	21,833.8901
5020	20,401.3748	20,921.9851
5021	20,206.3827	20,920.2320
5022	20,206.0467	20,695.2323
5023	20,401.0836	20,726.9853
5024	20,400.0924	20,063.1848
5025	20,000.0854	20,059.9985
5026	20,000.3756	20,253.7056
5027	19,746.6768	20,251.3181
5028	19,746.3866	20,057.6119
5029	19,022.0542	20,050.7956
5030	19,014.1674	20,888.8771
5031	18,310.7017	21,626.7947
5032	17,650.6556	21,621.1740
5033	17,649.3788	21,771.1686
5034	17,588.3001	21,634.1672
5035	17,557.7626	21,565.6656
5036	17,489.4033	21,596.5202
5037	19,022.6188	19,990.7983
5038	19,746.2967	19,997.6084
5039	20,400.0028	20,003.1822

⑤000 = COORDINATE POINT NO.

© 2010 GLMV Architecture, Inc.
All work herein is the exclusive property of GLMV Architecture, Inc. and is not to be copied or used in any way without the express written consent of GLMV Architecture, Inc. All drawings, specifications, ideas, designs and arrangements appearing herein constitute the original and unpublished work of:

GLMV Architecture, Inc.

MAINTENANCE BUILDING UNIFIED SCHOOL DISTRICT 265 GODDARD, KANSAS

Mark	Date	Description
	5/10/10	ITEMS PER ADDENDUM 1
	5/17/10	ITEMS PER ADDENDUM 2
	6/18/10	OCI COMMENT REVISIONS

PLAT (SOUTH)

Job No.	1185.090	C313
Date	07/07/10	
Drawn	RFT	
Checked	JEH	Dwg. of

Professional Engineering Consultants, P.A.
303 S. TOPEKA • WICHITA, KANSAS 67202 • 316.262.2091
www.pact.com • dept@pact.com

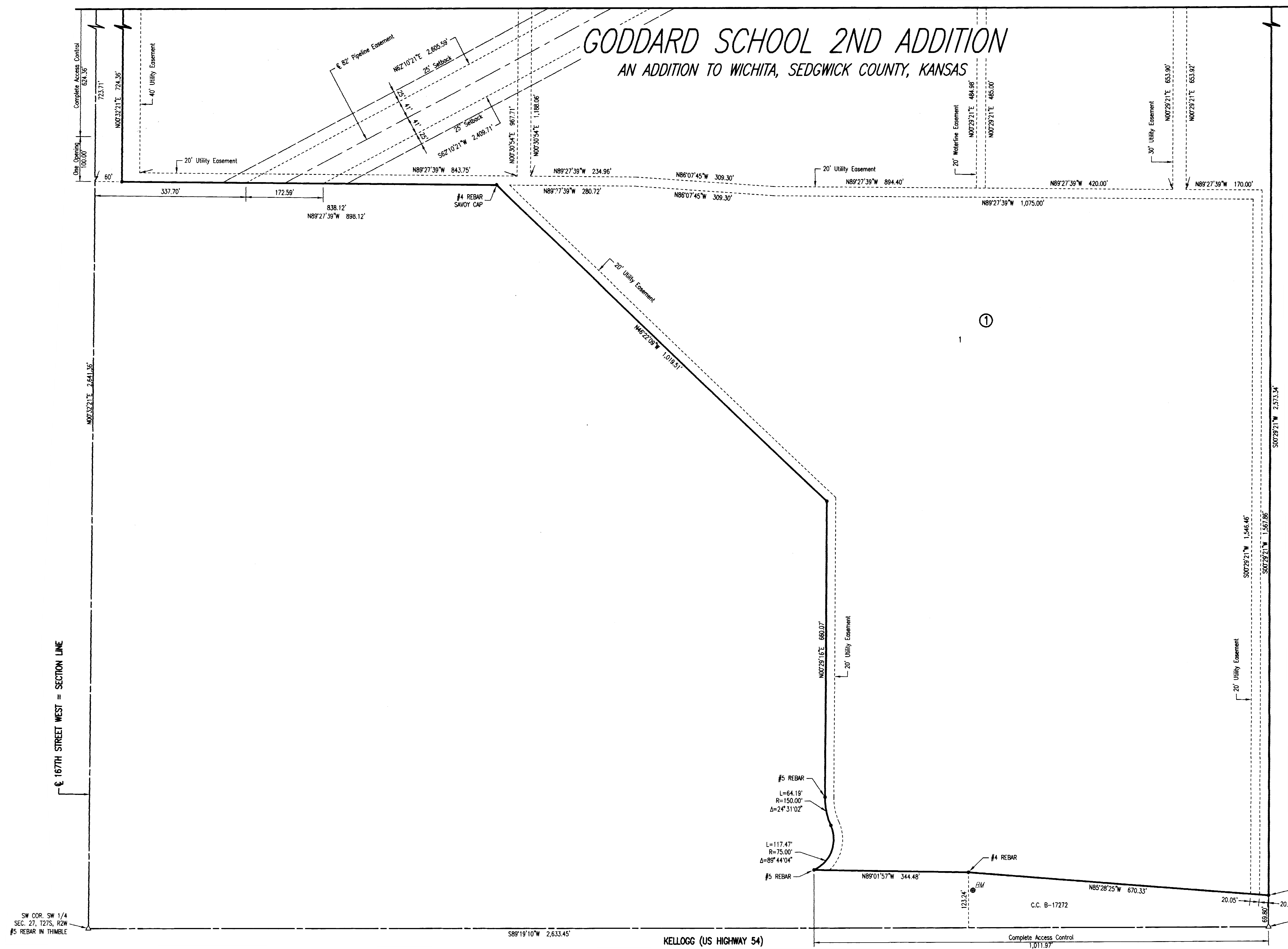
PRIVATE PROJECT NO. 1541 PPW (607853)

D
C
B
A

1 2 3 4 5

1 2 3 4 5

Saved 07-12-2010 11:16:42 AM by RFT
Plot Scale: 1/20' 07-15-2010 15:03 PM
C:\WORK\GODDARD\GODDARD.PLT



167TH STREET WEST = SECTION LINE

KELLOGG (US HIGHWAY 54)

C.C. B-17272

#5 REBAR
L=64.19'
R=150.00'
Δ=24°31'02"

L=117.47'
R=75.00'
Δ=89°44'04"

SW COR. SW 1/4
SEC. 27, T27S, R2W
#5 REBAR IN THIMBLE

SW COR. SW 1/4
SEC. 27, T27S, R2W
#4 REBAR IN THIMBLE