

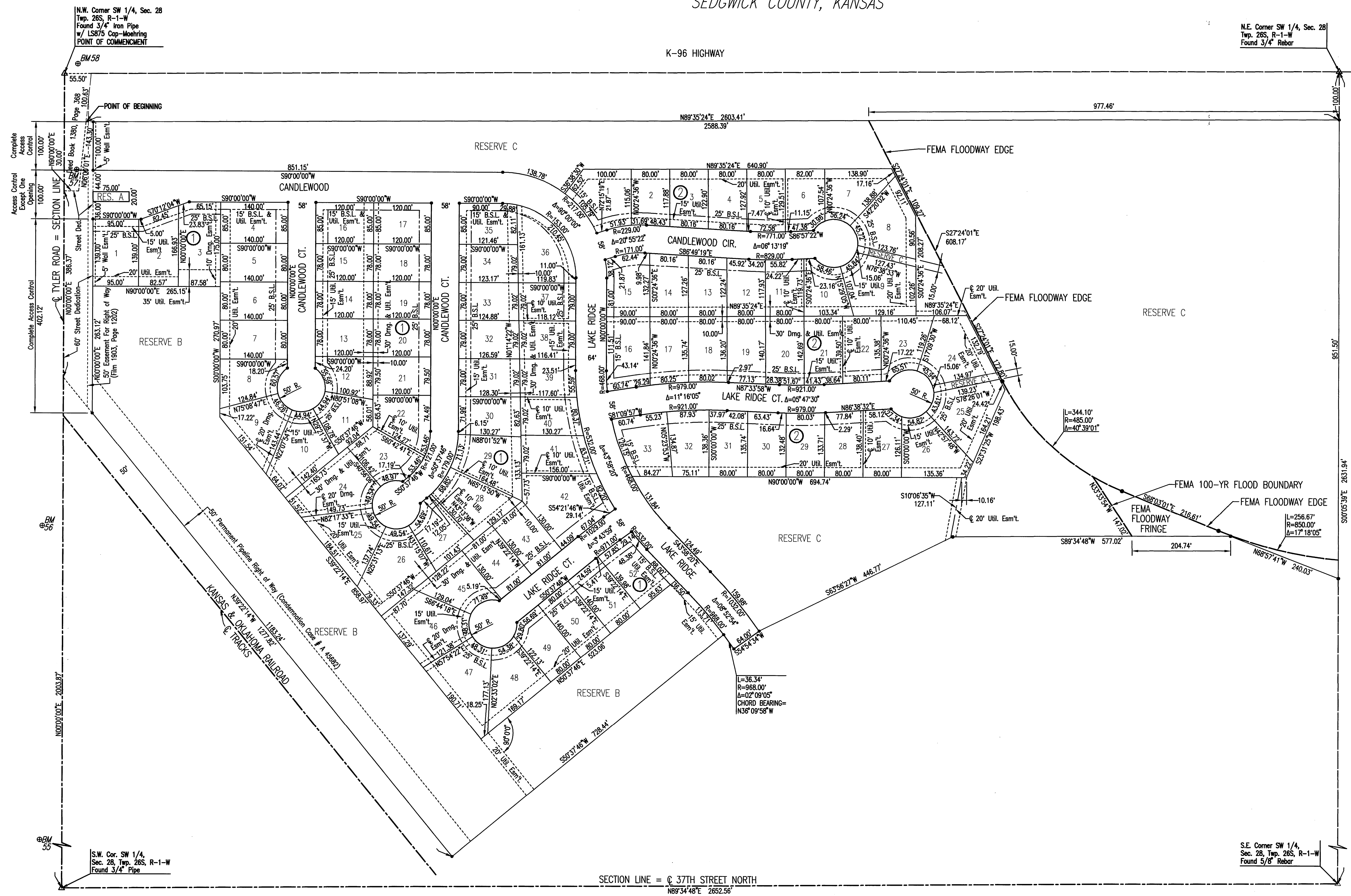
AVALON PARK 3RD

AN ADDITION TO WICHITA,
SEDGWICK COUNTY, KANSAS

K-96 HIGHWAY

N.E. Corner SW 1/4, Sec. 28,
Twp. 26S, R-1-W
Found 3/4" Rebar

N.W. Corner SW 1/4, Sec. 28,
Twp. 26S, R-1-W
Found 3/4" Iron Pipe
w/ LS875 Cap-Moehring
POINT OF COMMENCEMENT



- BENCHMARKS:**
- BM #55 - R.R. Spike in E. face Power Pole W. side
Tyler Rd. at House #3915
Elev.=1340.28 N.G.V.D.
Elev.=152.88 CITY DATUM
 - BM #56 - R.R. Spike in E. face Power Pole W.
side Tyler Rd. 2nd Pole S. of R.R. Tracks
Elev.=1339.98 N.G.V.D.
Elev.=152.58 CITY DATUM
 - BM #57 - Chiseled "I" on S. end RCP at entrance
to "the edge" Paintball Adventures,
E. side Tyler Rd. between R.R. Tracks
and K96 Highway.
Elev.=1340.74 N.G.V.D.
Elev.=153.34 CITY DATUM
 - BM #58 - Chiseled "I" on S. end concrete headwall,
E. end RCB under Tyler Rd. at 1/2 mile
line, S. of K96 Highway.
Elev.=1342.03 N.G.V.D.
Elev.=154.63 CITY DATUM

- LEGEND**
- △ = SECTION CORNER
 - ⊕ = BENCH MARK/VERTICAL CONTROL POINT
 - = 1/2" REBAR W/PEC CAP UNLESS OTHERWISE NOTED
 - = NO MONUMENT SET



DSNR: OPER: JTS SCALE: 1"=100.00
 Q:\2003\03601\LD0\dwg\03601_FINAL_PLAT 01-24-2005 10:14:42 am