


BENCHMARKS:
 BM #1: City of Wichita
 Benchmark Disc - 119th St. W
 & Lost Creek (Cowskin) 175' +/-
 north of Lost Creek Circle, SW
 corner of RCB, South end of
 Hubguard. Elev. = 1339.22
 (NGVD29)

BM #2: "□" Cut Top of Curb
 Adjacent to Fire Hydrant, East
 of house #927. Elev. = 1342.13
 (NGVD29)

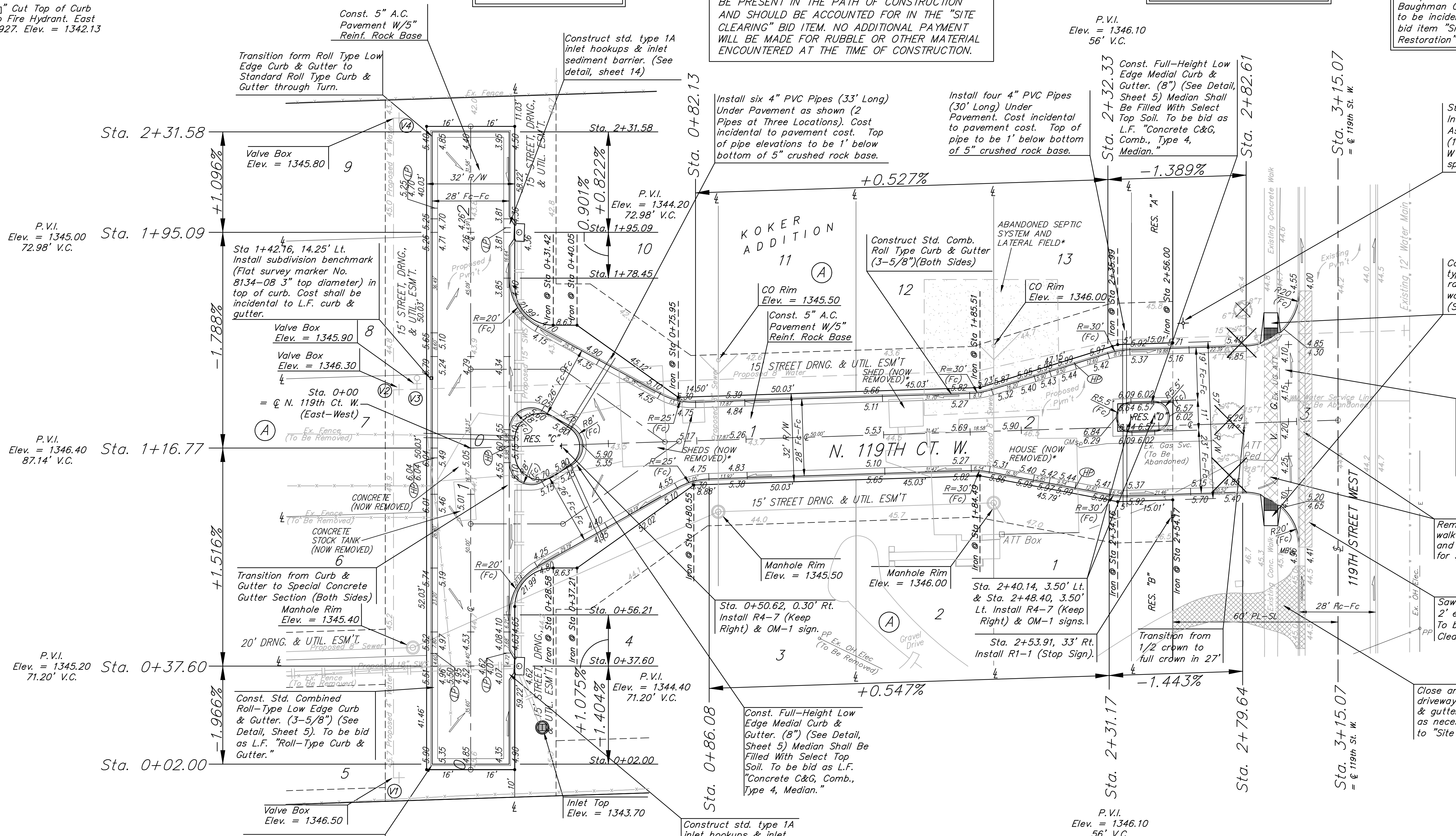
NOTE: Pavement on
 hammerhead is not crowned,
 it is cross-slope, with all
 drainage flowing across
 pavement to the east.

* SITE LOCATION PREVIOUSLY HAD HOUSE, SHED,
 DRIVE, SEPTIC SYSTEM, ETC. HOUSE AND SHED
 WERE SCRAPED AND FOUNDATIONS AND CELLARS
 WERE CAVED IN. SEPTIC SYSTEM WAS
 ABANDONED IN PLACE AND IS SHOWN IN A
 LOCATION DESCRIBED BY THE OWNER. SOME
 RUBBLE AND UNDERGROUND FACILITIES MAY STILL
 BE PRESENT IN THE PATH OF CONSTRUCTION
 AND SHOULD BE ACCOUNTED FOR IN THE "SITE
 CLEARING" BID ITEM. NO ADDITIONAL PAYMENT
 WILL BE MADE FOR RUBBLE OR OTHER MATERIAL
 ENCOUNTERED AT THE TIME OF CONSTRUCTION.

Contractor to coordinate with gas
 company to remove gas meter and
 abandon existing gas line,
 water department to remove
 water meter and abandon water
 line and ATT to remove pedestals.

 Tree to be removed
 Remove trees only as necessary
 for street construction and only
 with permission of Developer or
 Baughman Co. Cost of removal
 to be incidental to lump sum
 bid item "Site Clearing &
 Restoration".

Scale: 1" = 20'
 • = Iron



Construct std. (5')
 type A wheel chair
 ramp with detectable
 warning (both sides)
 (See detail, sheet 4)

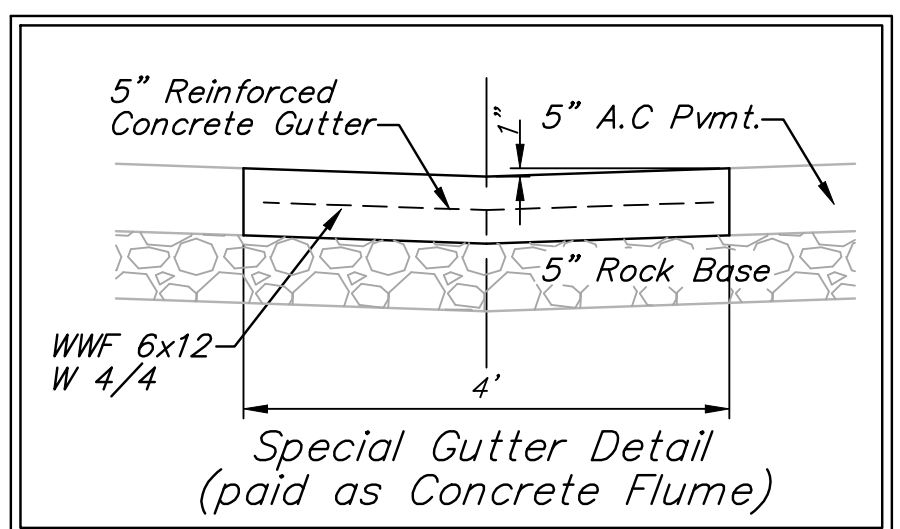
Construct 7" reinforced concrete
 valley gutter pavement with
 monolithic curb (6-5/8")
 Transition from full height
 (6-5/8") curb to roll (3-5/8")
 curb with wheelchair ramp
 (both sides).

Remove 77 L.F. concrete
 walk and 93 L.F. curb
 and gutter as necessary
 for street construction.

Saw cut, remove and replace
 2' existing pavement as shown.
 To be incidental to "Site
 Clearing & Restoration".

Close and remove existing
 driveway. Replace 30.0 L.F. curb
 & gutter and concrete sidewalk
 as necessary. To be incidental
 to "Site Clearing & Restoration".

NOTE: ROLL TYPE CURB & GUTTER TO
 BE CONSTRUCTED ON THE
 PAVEMENT SHOWN ON THIS SHEET.
 TOP OF CURB ELEVATIONS ARE
 GIVEN FOR FULL HEIGHT CURB.



Subdivision Bench Marks

Street & Station	Location Description	Elevation
hammerhead 1+42.16, 14.25' Lt.	Adjacent to fire hydrant at common front lot line of Lots 7-8, Block A.	

WATER VALVE LOCATION TABLE

VALVE NUMBER	STREET	BASILINE STATION	OFFSET DISTANCE	OFFSET DIRECTION
V1	hammerhead	0-03.00	28.00'	Lt.
V2	hammerhead	1+37.88	28.00'	Lt.
V3	hammerhead	1+37.88	19.50'	Lt.
V4	hammerhead	2+36.58	28.00'	Lt.

Paving contractor will be responsible to operate all water valves
 on the project, in the presence of the inspector, to ensure
 accessibility to the valves, and that all valves (except blowoffs)
 are left in the "ON" position when the project is completed.

Baughman KOKER ADDITION
N. 119TH CT. W.
 STA 0+00 TO STA 3+15.07

Baughman Company, P.A. 315 Ellis St. Wichita, KS 67211 P 316-262-7271 F 316-262-0149
 ENGINEERING | SURVEYING | PLANNING | LANDSCAPE ARCHITECTURE

PROJECT NUMBER
412-84380

DESIGN TJW DRAWN JEB/TMS
 APPROVED DATE 10/10
 SCALE Noted
 SHEET **6 OF 18**

Revisions:

En:\Projects\Koker Addition\Trees\10.19.10\06 Str1.dwg 05-07-E303