

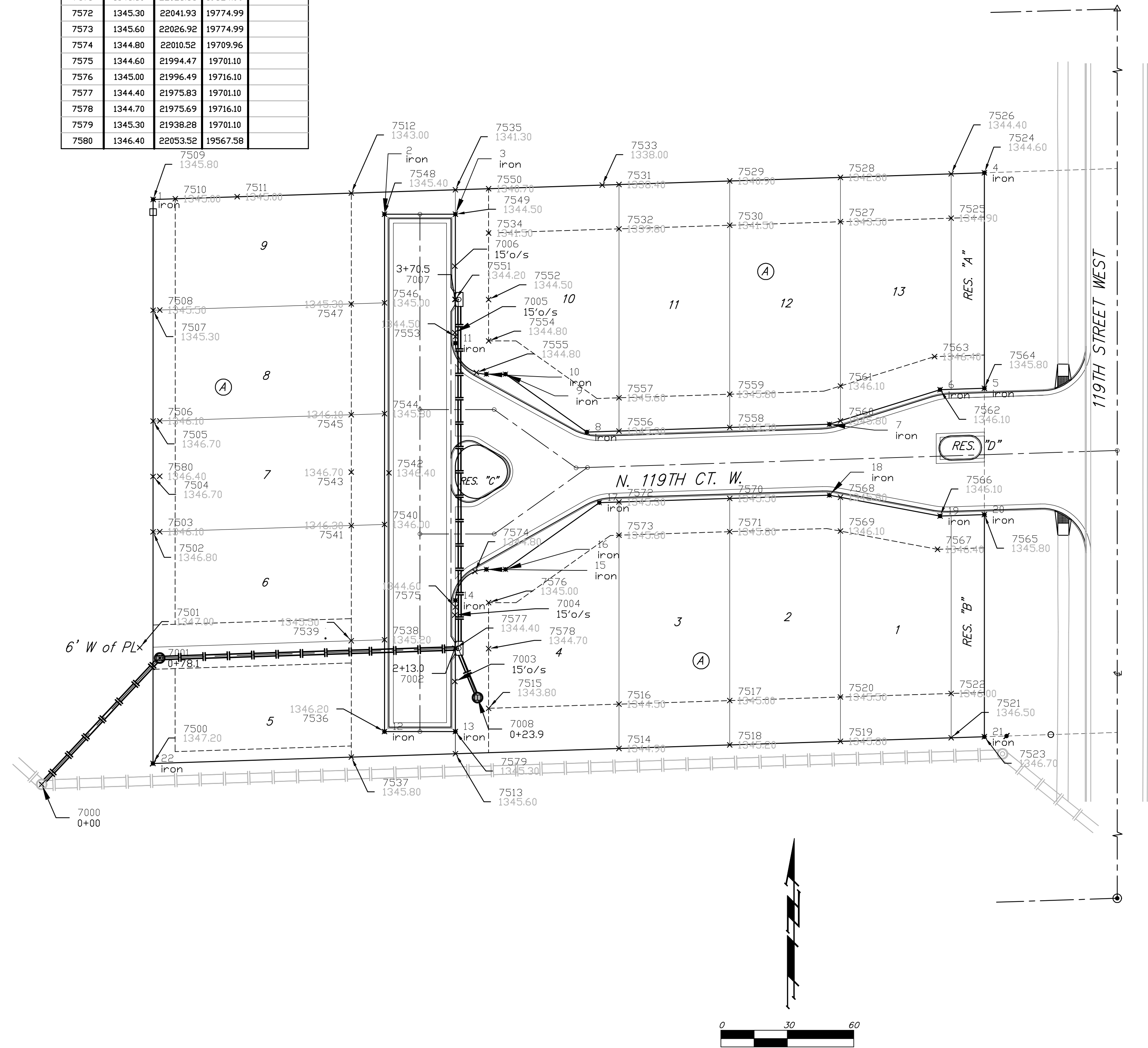
Point Table				
Point #	Elevation	Northing	Easting	Description
7000	0.00	21914.43	19514.24	0+00
7001	0.00	21971.47	19567.56	0+78.1
7002	0.00	21975.88	19700.88	2+13.0
7003	0.00	21960.88	19700.88	15'o/s
7004	0.00	21990.88	19700.88	15'o/s
7005	0.00	22118.37	19700.88	15'o/s
7006	0.00	22148.37	19700.88	15'o/s
7007	0.00	22133.37	19700.88	3+70.5
7008	0.00	21953.60	19711.10	0+23.9
7500	1347.20	21923.89	19564.54	
7501	1347.00	21976.19	19558.56	
7502	1346.80	22028.41	19564.57	
7503	1346.10	22028.51	19567.58	
7504	1346.70	22053.43	19564.58	
7505	1346.70	22078.44	19564.59	
7506	1346.10	22078.54	19567.59	
7507	1345.30	22128.47	19564.61	
7508	1345.50	22128.57	19567.61	
7509	1345.80	22178.50	19564.62	
7510	1345.00	22178.82	19574.62	
7511	1345.00	22179.72	19602.58	
7512	1343.00	22181.37	19654.10	
7513	1345.60	21928.28	19701.13	
7514	1344.90	21930.65	19774.99	
7515	1343.80	21948.77	19716.10	
7516	1344.50	21950.66	19774.99	
7517	1345.00	21952.26	19824.99	
7518	1345.20	21932.25	19824.99	
7519	1345.80	21933.86	19875.00	
7520	1345.50	21953.87	19875.00	
7521	1346.50	21935.46	19925.00	
7522	1346.00	21955.47	19925.00	
7523	1346.70	21935.94	19940.00	
7524	1344.60	22190.55	19940.00	
7525	1344.90	22170.06	19925.00	
7526	1344.40	22190.07	19925.00	
7527	1343.50	22168.45	19875.00	
7528	1342.80	22188.46	19875.00	
7529	1340.90	22186.86	19824.99	
7530	1341.50	22166.85	19824.99	
7531	1338.40	22185.25	19774.99	
7532	1339.80	22165.24	19774.99	
7533	1338.00	22185.01	19767.43	
7534	1341.50	22163.35	19716.10	
7535	1341.30	22182.88	19701.10	
7536	1346.20	21938.28	19669.10	
7537	1345.80	21926.77	19654.10	
7538	1345.20	21979.74	19669.10	
7539	1345.50	21979.25	19654.10	
7540	1346.00	22031.77	19669.10	
7541	1346.30	22031.29	19654.10	
7542	1346.40	22055.06	19671.10	
7543	1346.70	22055.41	19654.10	
7544	1345.80	22081.80	19669.10	
7545	1346.10	22081.31	19654.10	
7546	1345.00	22131.82	19669.10	
7547	1345.30	22131.34	19654.10	
7548	1345.40	22171.85	19669.10	
7549	1344.50	22171.85	19701.10	
7550	1340.70	22183.36	19716.10	
7551	1344.20	22133.39	19701.10	
7552	1344.50	22133.31	19716.10	
7553	1344.50	22116.58	19701.10	
7554	1344.80	22114.63	19716.10	
7555	1344.80	22100.36	19710.64	
7556	1345.30	22073.95	19774.99	
7557	1345.60	22088.96	19774.99	
7558	1345.50	22075.56	19824.99	
7559	1345.80	22090.56	19824.99	
7560	1345.80	22078.56	19875.00	
7561	1346.10	22094.28	19875.00	
7562	1346.10	22092.62	19920.00	
7563	1346.40	22107.54	19917.48	
7564	1345.80	22093.26	19940.00	
7565	1345.80	22036.23	19940.00	

Point Table				
Point #	Elevation	Northing	Easting	Description
7566	1346.10	22035.59	19920.00	
7567	1346.40	22020.54	19918.84	
7568	1345.80	22044.05	19875.00	
7569	1346.10	22028.78	19875.00	
7570	1345.50	22043.54	19824.99	
7571	1345.80	22028.53	19824.99	
7572	1345.30	22041.93	19774.99	
7573	1345.60	22026.92	19774.99	
7574	1344.80	22010.52	19709.96	
7575	1344.60	21994.47	19701.10	
7576	1345.00	21996.49	19716.10	
7577	1344.40	21975.83	19701.10	
7578	1344.70	21975.69	19716.10	
7579	1345.30	21938.28	19701.10	
7580	1346.40	22053.52	19567.58	

STREET IMPROVEMENTS COORDINATE SHEET

KOKER ADDITION

WICHITA, SEDGWICK COUNTY, KANSAS



PT#	NORTHING	EASTING	DESCRIPTION
1	22178.5000	19564.6217	iron
2	22171.8534	19669.0953	iron
3	22171.8534	19701.0953	iron
4	22190.5488	19940.0000	iron
5	22093.2610	19940.0000	iron
6	22092.6179	19920.0000	iron
7	22077.0029	19870.0000	iron
8	22073.4817	19760.4916	iron
9	22099.6347	19723.7282	iron
10	22099.6347	19715.0953	iron
11	22113.6347	19701.0953	iron
12	21938.2752	19669.0953	iron
13	21938.2752	19701.0953	iron
14	21997.4935	19701.0953	iron
15	22011.4935	19715.0953	iron
16	22011.4935	19723.7282	iron
17	22041.6460	19766.1137	iron
18	22044.9864	19870.0000	iron
19	22035.5884	19920.0000	iron
20	22036.2315	19940.0000	iron
21	21935.9421	19940.0000	iron
22	21923.8930	19564.5410	iron

Baughman

Baughman Company, P.A. 315 Bill St. Wichita, KS 67211 F 316-262-7271 F 316-262-0149
ENGINEERING | SURVEYING | PLANNING | LANDSCAPE ARCHITECTURE

KOKER ADDITION

COORDINATE SHEET

STREET IMPROVEMENTS

PROJECT NUMBER 472-84380	DESIGN TJW	DRAWN TMS
REVISIONS:	APPROVED	DATE 10/10
SCALE Noted		
SHEET		15 OF 17

E:\Projects\Koker Addition\Teresa\10.19.10\15 STR Coords 2.dwg 05-07-E303