

KOKER ADDITION

WICHITA, SEDGWICK COUNTY, KANSAS

State of Kansas) SS We, *Baughman Company, P.A.*, Surveyors in Sedgwick County and state do hereby certify that we have surveyed and platted "KOKER ADDITION", Wichita, Sedgwick County, Kansas and that the accompanying plat is a true and correct exhibit of the property surveyed, described as the east 435.6 feet of the north 254.5 feet of the south 2192.5 feet of the SE1/4 of Sec. 13, Twp. 27-S, R-2-W of the 6th P.M., Sedgwick County, Kansas.

Existing public easements and dedications being vacated by virtue of K.S.A. 12-512(b).
Baughman Company, P.A.

_____, Surveyor
Michael G. Conrey

This plat of "KOKER ADDITION", Wichita, Sedgwick County, Kansas has been submitted to and approved by the Wichita-Sedgwick County Metropolitan Area Planning Commission, Wichita, Kansas.

Dated this _____ day of _____, 2005.
Wichita-Sedgwick County Metropolitan Area Planning Commission

_____, Chair
Morris K. Dunlap

_____, Secretary
John L. Schlegel

This plat approved and all dedications shown hereon accepted by the City Council of the City of Wichita, Kansas, this _____ day of _____, 2005.

_____, Mayor
Carlos Mayans

_____, City Clerk
Karen Sublett

Reviewed in accordance with K.S.A. 58-2005 on this _____ day of _____, 2005.

_____, Deputy County Surveyor
Tricia L. Robello, L.S. #1246
Sedgwick County, Kansas

Entered on transfer record this _____ day of _____, 2005.

_____, County Clerk
Don Brace

State of Kansas) SS This is to certify that this plat has been filed for record in the office of the Register of Deeds, this _____ day of _____, 2005 at _____ o'clock _____ M; and is duly recorded.

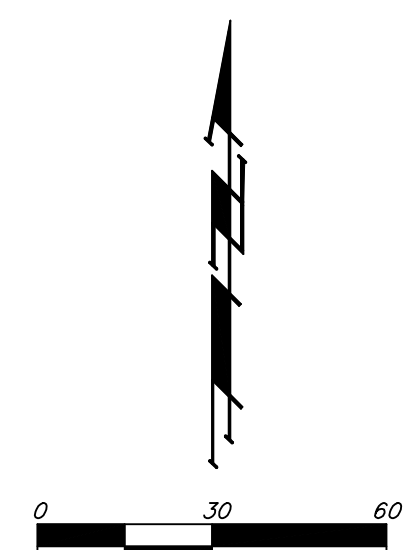
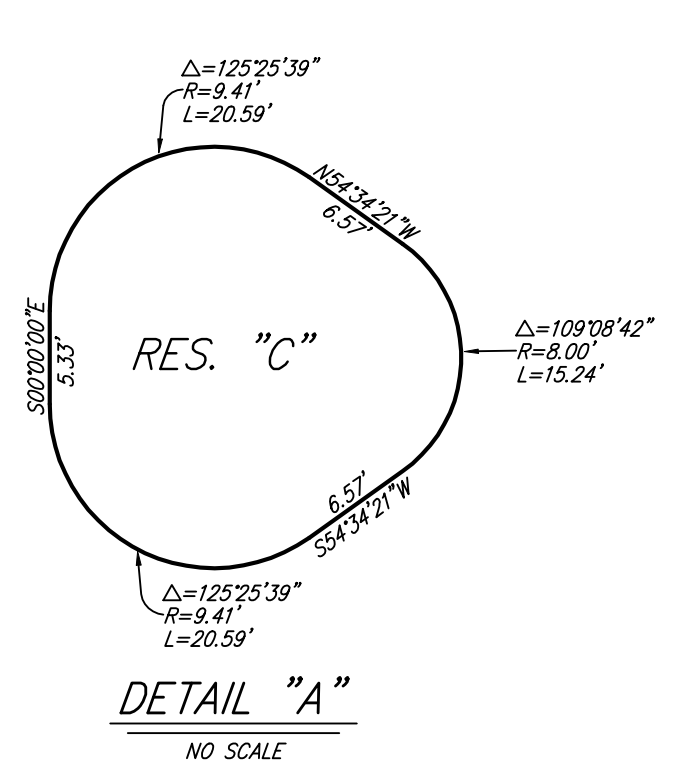
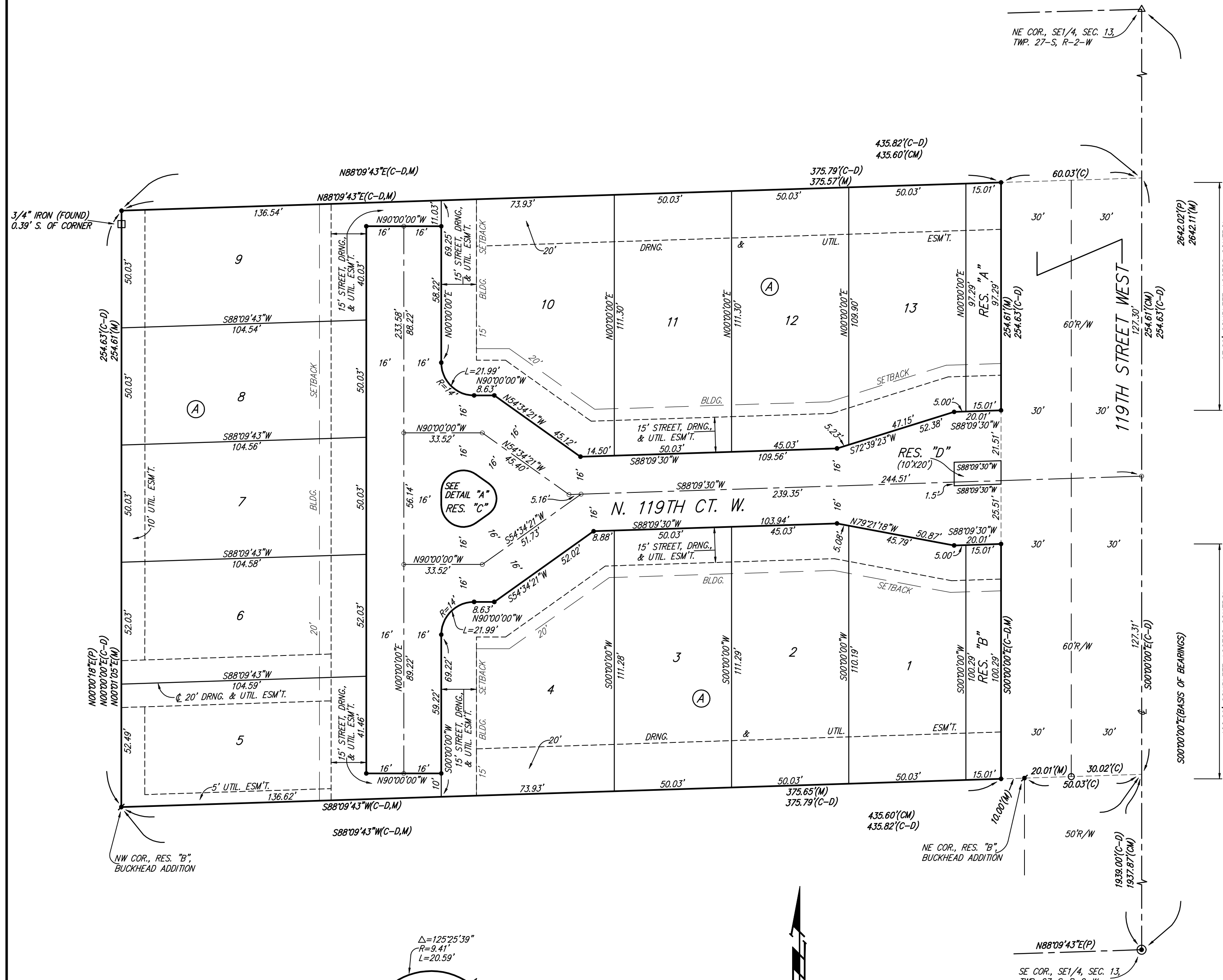
_____, Register of Deeds
Bill Meek

_____, Deputy
Tonya Buckingham

State of Kansas) SS The foregoing instrument acknowledged before me, this _____ day of _____, 2005, by *Clinton R. Koker, Manager of CRK Development, LLC*, on behalf of the corporation.

_____, Notary Public

My App't. Exp. _____



- = #4 REBAR W/ "BAUGHMAN" CAP (SET)
 - = #4 REBAR W/ "BAUGHMAN" CAP (FOUND)
 - ⊙ = #6 REBAR IN THIMBLE (FOUND)
 - = 1/2" IRON (FOUND)
 - = 3/4" IRON (FOUND)
 - △ = #5 REBAR IN THIMBLE (FOUND)
- (M) = MEASURED
(P) = PLATTED
(C) = CALCULATED
(C-D) = CALCULATED PER DRESERVED INFO.
(CM) = CALCULATED PER MEASURED INFO.
- | MINIMUM BUILDING PAD ELEVATIONS FOR LOWEST OPENING TO THE STRUCTURES | | |
|--|-------|-----------|
| LOT | BLOCK | ELEVATION |
| 5-9 | A | 1336.40 |
- BENCHMARK:
CITY OF WICHITA BENCHMARK DISC -
119TH ST. W. & LOST CREEK (COWSKIN)
175'± NORTH OF LOST CREEK CIRCLE,
SE CORNER OF RCB,
SOUTH END OF HUBGUARD.
ELEV. = 1339.22 NGVD29

NOTE:
ALL LOTS WITHIN KOKER ADDITION SHALL HAVE A 5 FOOT INTERIOR SIDEYARD SETBACK.

NOTE:
A master grading plan for drainage has been developed for this subdivision and is on file with the City of Wichita, Kansas. All drainage easements, rights-of-ways, or reserves shall remain at established grades or as modified with the approval of the City Engineer of the City of Wichita, Kansas. No obstructions which impede the flow of this drainage system shall be allowed.