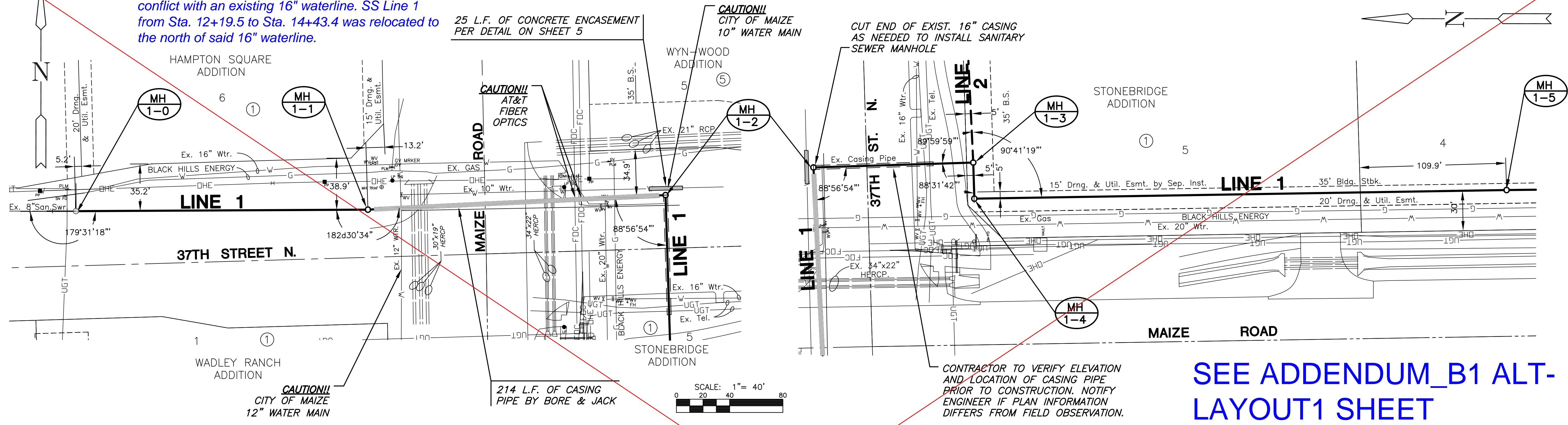
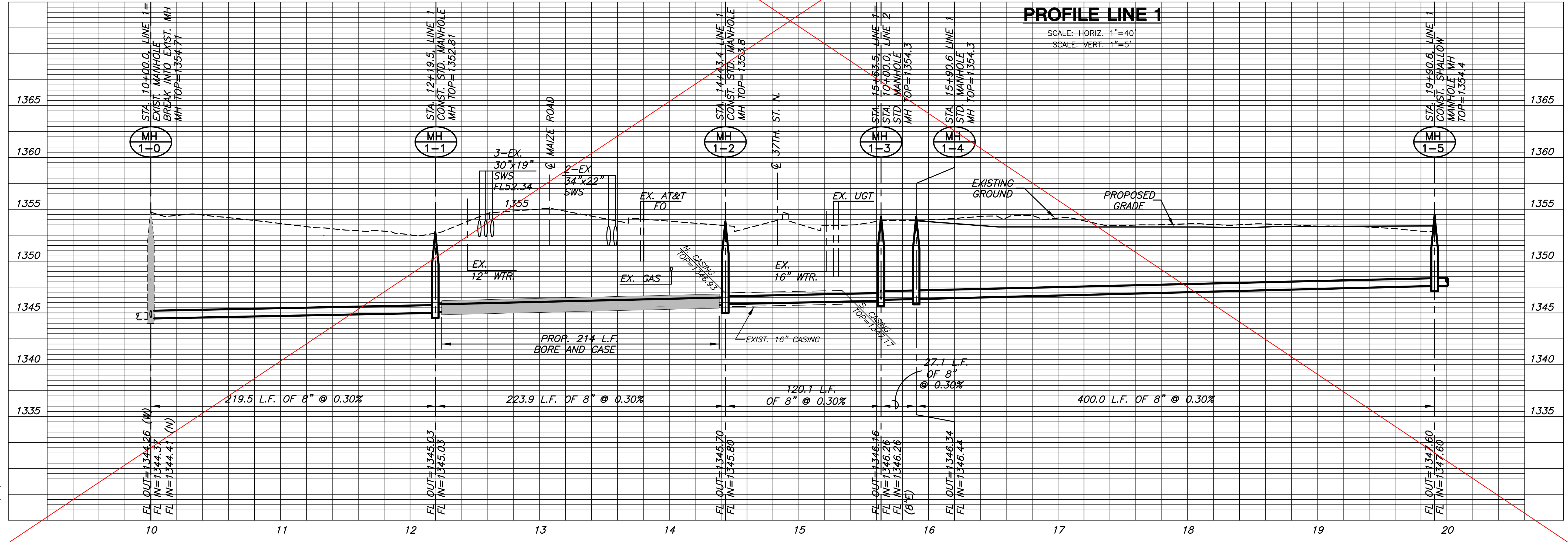


Note: See Change Order No. 1  
Proposed sewer bore under Maize Rd. is in direct conflict with an existing 16" waterline. SS Line 1 from Sta. 12+19.5 to Sta. 14+43.4 was relocated to the north of said 16" waterline.



NOTE:  
CONTRACTOR TO VERIFY THE DEPTH AND LOCATION OF EXISTING UTILITIES PRIOR TO CONSTRUCTION.

**PLAN LINE 1**



**LINE 1**  
SHEET TITLE  
468-84571  
PROJECT NUMBER

DESIGN BY: DFL  
DRAWN BY: DM  
CHECKED BY: GJA

ISSUED: April 2010  
REVISED: MAY 14, 2010  
Pipe Size, Slope, Elev.

SHEET NO.  
4 of 13

PLOTTED: Thursday, May 20, 2010 @ 09:22AM

S:\CIVIL\05440\07200-JACKSON\DWG\35AN\07200\_B1.DWG