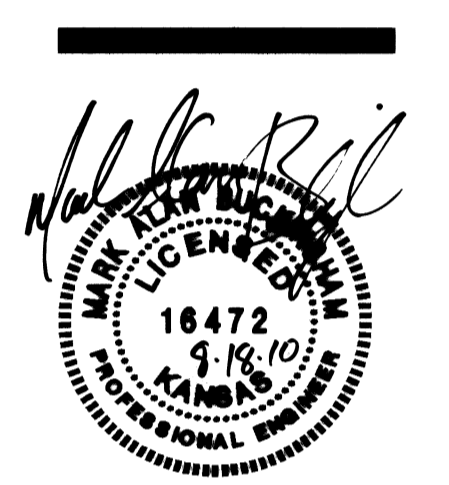


DATE 4/16/2010  
ORIGINAL CONTRACT DOCUMENTS  
5/4/2010  
ADDENDUM #1  
7/20/10  
STATE CODE REV 2  
8/05/10  
FIRE HYD. ELEVATIONS  
7/23/10 LINE 1  
MOVED SOUTH, REV 3  
8/05/10 LINE 1  
COW APPROVAL BLOCK

HOWARD+HELMER  
architect  
www.howardhelmer.com | kansas city + wichita

3500 north rock road  
bldg. 500 wichita, ks 67226  
316.634.1111 (p) 316.634.1066 (f)



DFM project no. A-0131B  
H+H project no. 0912.00

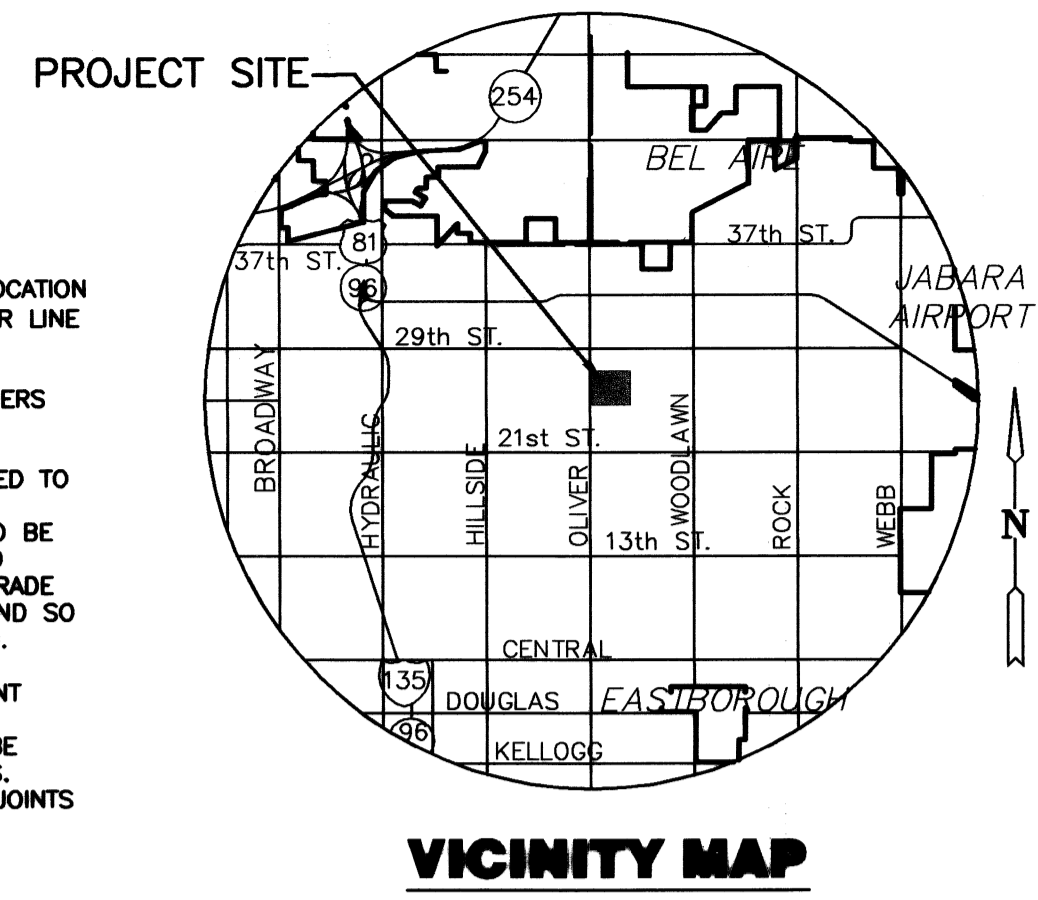
WICHITA STATE UNIVERSITY FOUNDATION  
PRIVATE PROJECT 1642PPW  
OCC NO. 607843  
BY CITY ENGINEER OF WICHITA,  
& BY WICHITA FIRE DEPARTMENT

Water Mains (Public Works) [Signature] 8/18/10  
Water Mains (Water & Sewer Dept.) [Signature] 8/18/2010  
Fire Prot. Line [Signature] 8-18-2010

NOTE TO CONTRACTORS  
Public Property:  
Inspection and testing for the waterline is to be provided by a Licensed Consulting Engineering Firm under contract with the Owner/Developer. Said inspection to be in accordance with the City of Wichita Standard Construction Engineering Practices and certified by a Professional Engineer licensed in the state of Kansas. No work shall be performed in dedicated easements or public rights-of-way by the Contractor without such inspection, nor shall any work be commenced without written authorization by the City Engineer. All construction and materials shall comply with the City of Wichita Specifications and Standards (on file and available in the City Engineer's Office).

Private Property:  
Installation and testing for the fire protection line is to be performed by a City of Wichita Licensed Fire Protection Contractor in accordance with the fire codes as adopted by the City of Wichita. All materials and construction practices for the fire protection line shall comply with the fire codes as adopted by the City of Wichita (available from the City of Wichita Fire Department). The Contractor shall not commence work without notification and approval of the Wichita Fire Department. Inspection of the fire protection line is to be provided by a licensed engineering firm under contract with the Owner/Developer and the Fire Department. The contractor shall not start work until the project inspector is assigned to the project and present on the site. Any work done without inspection will be required to be uncovered for inspection.

AS BUILTS:  
CONTRACTOR: M. Sullivan, Inc.  
INSPECTOR: Tom Jones  
K.E. Miller Engineering  
11/12/2010



NOTES

- 1. CONTRACTOR TO VERIFY DEPTH & LOCATION OF EXISTING UTILITIES AND 16" WATER LINE PRIOR TO CONSTRUCTION.
- 2. ALL LINES TO BE INSTALLED BY OTHERS ARE SUBJECT TO O.C.I. REVIEW.
- 3. PAVEMENT REMOVAL MAY BE REQUIRED TO ACCOMMODATE WATERLINE OR FIRE HYDRANT INSTALLATION. PAVEMENT TO BE SAWCUT ITS ENTIRE DEPTH PRIOR TO REMOVAL. PAVEMENT AND ANY SUBGRADE REMOVAL SHALL BE REPLACED IN KIND SO AS TO MATCH EXISTING INSTALLATION.
- 4. IN THE CASE OF CONCRETE PAVEMENT REMOVAL, MATCH JOINT PARTERN OF EXISTING PAVEMENT. JOINTS SHALL BE SEALED AS PER WICHITA STD. SPECS. ALSO, NEW TO EXISTING CONCRETE JOINTS ARE TO BE AS WICHITA STD. SPECS.

GENERAL NOTES

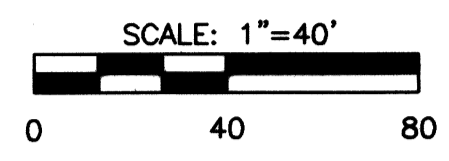
- 1. ALL WATER MAINS AND APPURTENANCES SHALL BE INSTALLED IN ACCORDANCE WITH CITY OF WICHITA, KANSAS STANDARD SPECIFICATIONS FOR WATER MAIN INSTALLATIONS.
- 2. CONTRACTOR WILL BE REQUIRED TO PROVIDE A MINIMUM ADVANCE NOTICE OF SEVENTY-TWO (72) HOURS TO UTILITY COMPANIES PRIOR TO STARTING ANY EXCAVATION AS FOLLOWS:  
KANSAS ONE-CALL 1-800-344-7233 OR LOCAL (WICHITA) 887-2470  
THE CONTRACTOR MUST NOTIFY THE FOLLOWING IN CASE OF EMERGENCY:  
COX COMMUNICATIONS (CABLE) 262-0661  
WESTAR (ELECTRIC) 383-8600  
KANSAS GAS SERVICE (GAS) 832-3101  
SBC (TELEPHONE) 800-870-8390  
CITY OF WICHITA WATER & SEWER 262-6000  
BLACK HILLS ENERGY (GAS) 800-303-0357
- 3. THE WATER MAIN SHALL BE CONSTRUCTED ON THE ALIGNMENT SHOWN ON THE PLANS. TREES AND SHRUBS IN PUBLIC RIGHT OF WAY WHICH ARE IN DIRECT CONFLICT WITH PROPOSED NEW CONSTRUCTION SHALL BE REMOVED BY THE CONTRACTOR WITH THE ENGINEER'S APPROVAL, AND SHALL BE INCLUDED IN THE PRICE BID FOR THE INSTALLED WATER PIPE. TREES AND SHRUBS WHICH ARE NOT IN DIRECT CONFLICT WITH PROPOSED CONSTRUCTION SHALL BE SAVED AND PROTECTED FROM DAMAGE.

BENCHMARKS

- 1. SURVEY PROVIDED BY PROFESSIONAL ENGINEERING CONSULTANTS, P.A., WICHITA, KANSAS. - AUG. 1998  
DATUM BENCH MARK: CITY OF WICHITA BRASS BENCH MARK DISC 500+ SOUTH OF NORWOOD ST. NE CORNER RCBC ON EAST SIDE OF OLIVER ST. ELEV.=160.80  
CHISELED "1" IN SW CORNER OF SIDEWALK AT SW CORNER OF BUILDING. ELEV.=167.65
- 2. CHISELED "A" FAR SOUTH CORNER EXISTING CONC. PARKING LOT SOUTH OF PLAYGROUND. ELEV.=167.74

LEGEND

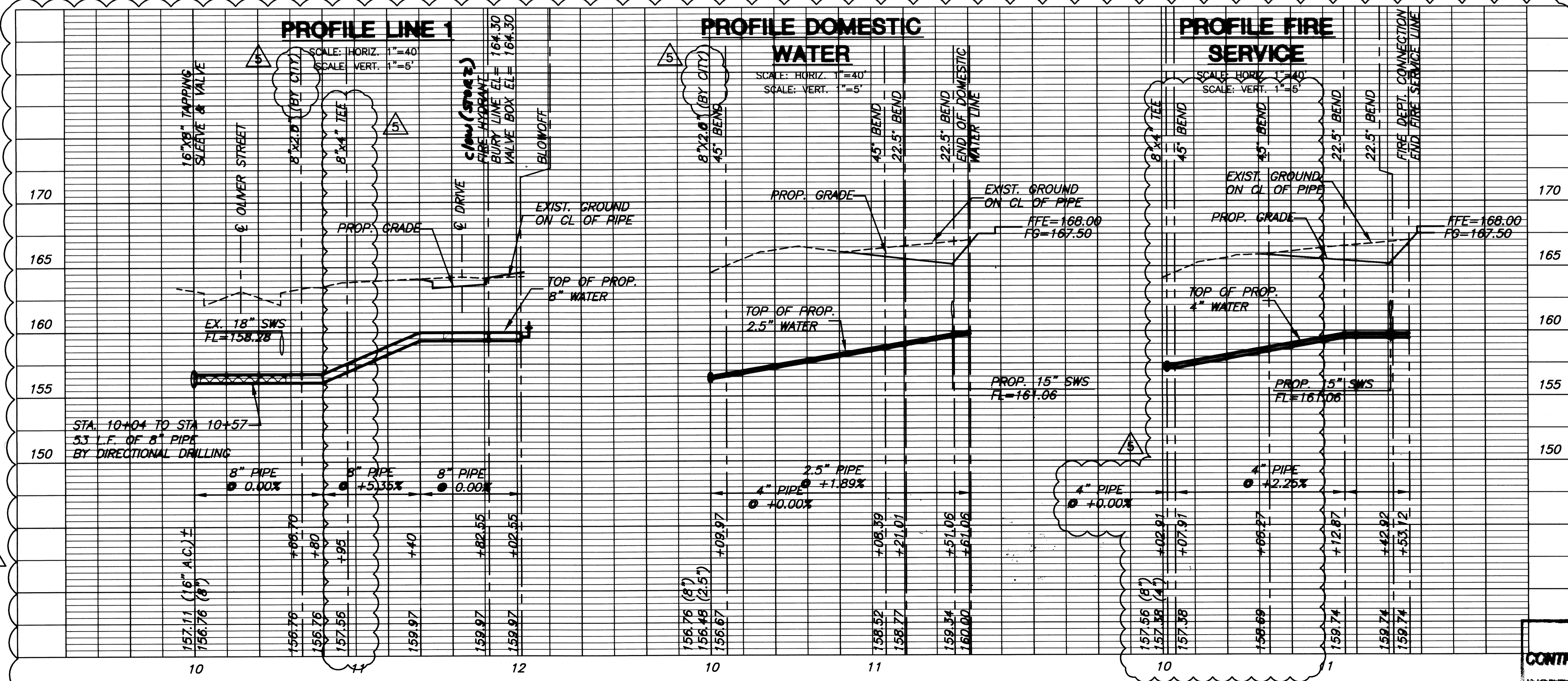
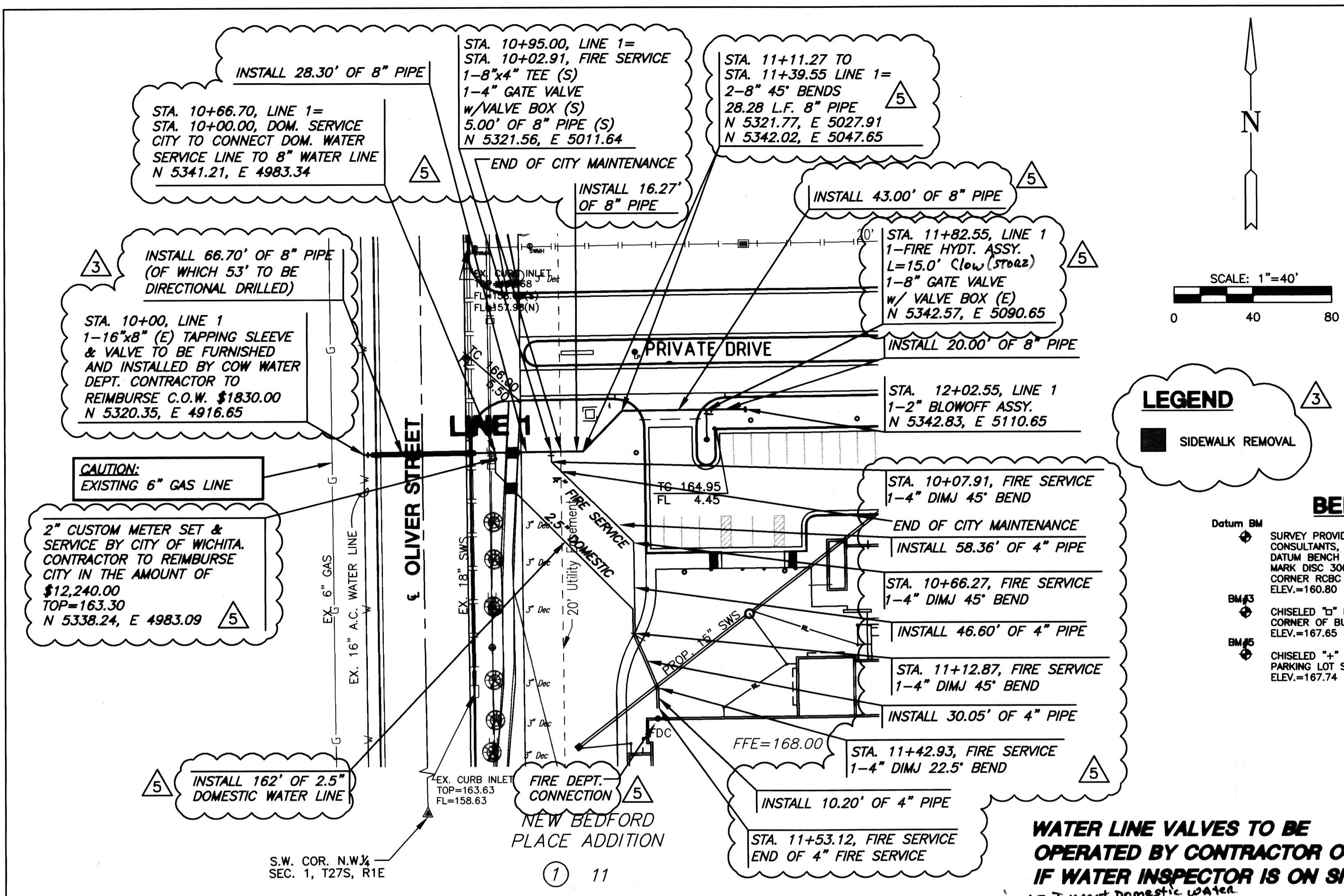
■ SIDEWALK REMOVAL



WATER LINE VALVES TO BE OPERATED BY CONTRACTOR ONLY IF WATER INSPECTOR IS ON SITE  
DID NOT INSPECT DOMESTIC WATER

NOTE: BACKFLOW PREVENTER LOCATED IN BUILDING

Fire Line Inspected by W.S.U.



AS BUILTS:  
CONTRACTOR: M. Sullivan, Inc.  
INSPECTOR: Tom Jones  
K.E. Miller Engineering  
11/12/2010