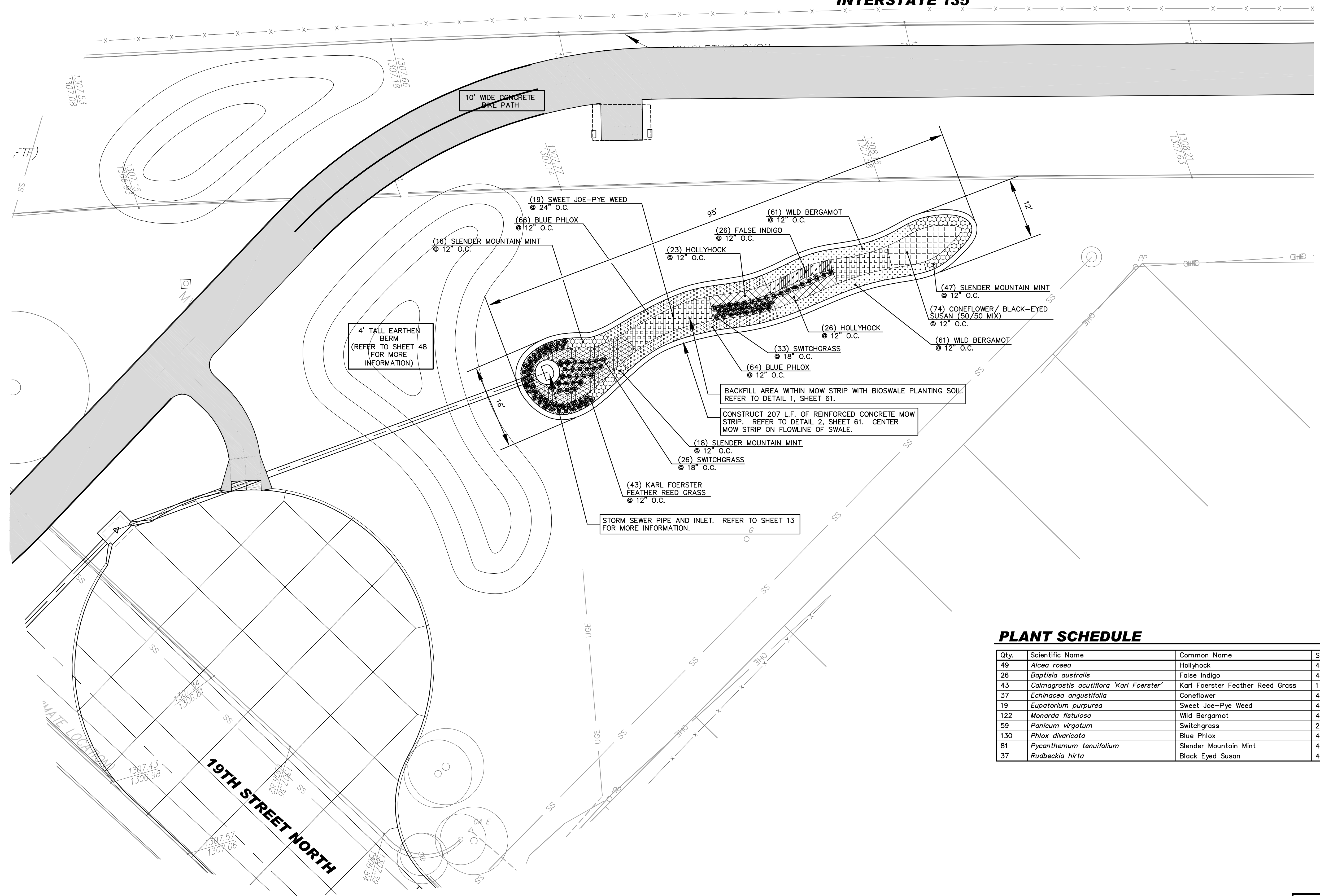


INTERSTATE 135



4' TALL EARTHEN BERM
(REFER TO SHEET 48 FOR MORE INFORMATION)

10' WIDE CONCRETE BIKE PATH

BACKFILL AREA WITHIN MOW STRIP WITH BIOSWALE PLANTING SOIL. REFER TO DETAIL 1, SHEET 61.

CONSTRUCT 207 L.F. OF REINFORCED CONCRETE MOW STRIP. REFER TO DETAIL 2, SHEET 61. CENTER MOW STRIP ON FLOWLINE OF SWALE.

STORM SEWER PIPE AND INLET. REFER TO SHEET 13 FOR MORE INFORMATION.

PLANT SCHEDULE

Qty.	Scientific Name	Common Name	Size	Condition	Spacing	Flower Color	Remarks
49	<i>Alcea rosea</i>	Hollyhock	4" Pot	Cont.	18" O.C.	Red	Full & Healthy
26	<i>Baptisia australis</i>	False Indigo	4" Pot	Cont.	12" O.C.	Blue/Purple	Full & Healthy
43	<i>Calamagrostis acutiflora 'Karl Foerster'</i>	Karl Foerster Feather Reed Grass	1 Gal.	Cont.	12" O.C.	-	Full & Healthy
37	<i>Echinacea angustifolia</i>	Coneflower	4" Pot	Cont.	18" O.C.	Magenta	50% Mix w/ Rudbeckia
19	<i>Eupatorium purpurea</i>	Sweet Joe-Pye Weed	4" Pot	Cont.	24" O.C.	Purple/ Blue	Full & Healthy
122	<i>Monarda fistulosa</i>	Wild Bergamot	4" Pot	Cont.	12" O.C.	Pink	Full & Healthy
59	<i>Panicum virgatum</i>	Switchgrass	2 or 3 Gal.	Cont.	18" O.C.	-	Full & Healthy
130	<i>Phlox divaricata</i>	Blue Phlox	4" Pot	Cont.	12" O.C.	Purple	Full & Healthy
81	<i>Pycnanthemum tenuifolium</i>	Slender Mountain Mint	4" Pot	Cont.	12" O.C.	White	Full & Healthy
37	<i>Rudbeckia hirta</i>	Black Eyed Susan	4" Pot	Cont.	12" O.C.	Gold	50% Mix w/ Echinacea

19th STREET PAUSE POINT- BIOFILTRATION SWALE LS-3 PLANTING PLAN
Scale 1" = 10'-0"

I-135 to K-96 BIKE PATH
BIOFILTRATION SWALE LS-3 PLANTINGS
WICHITA, KANSAS

Ruggles & Bohm, P.A.
Engineering, Surveying, Land Planning

924 North Main
Wichita, Kansas 67203
www.rbkansas.com

(316) 264-8008
(316) 264-4621 fax
E-mail: info@rbkansas.com

DESIGN BDT
DRAWN BDT
REVIEW --
UTILITY --
DATE ..

DRAWING FILE Landscape Base [LSCAPE 17]
PROJECT NUMBER

RSG JOB 3394E
SHEET 63 OF 72