

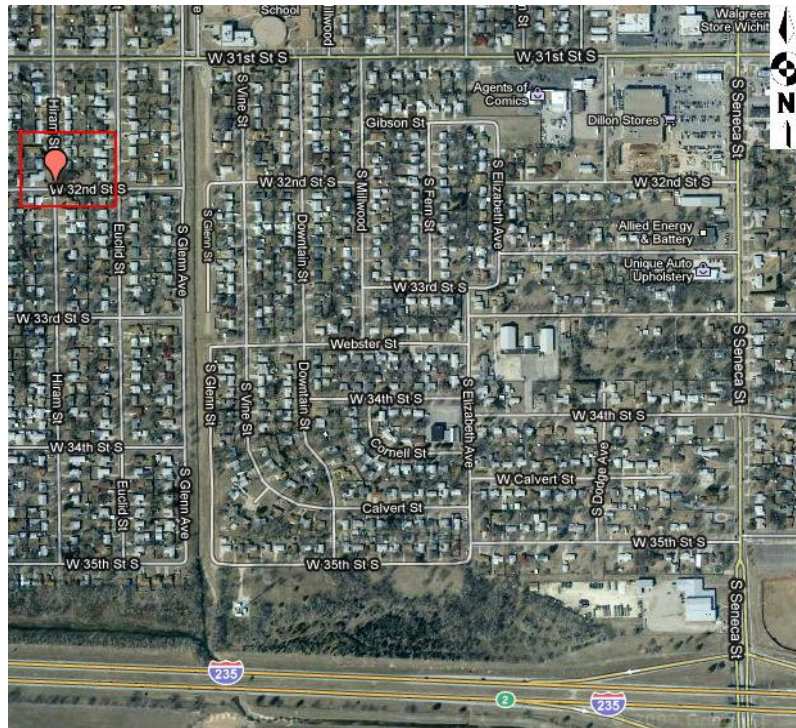
**Attachment A Locations**

**472-84944 132723 2010 Contract Maintenance Concrete Repairs, Ph 4**

Priority	Street	From	To	Project	CCD	Class	SY	L	W	Lanes	Surface	Prep, SY	V&G, SY	DRWY, SF	C&G, LF	WCRs	Notes
1	32nd St. S	Hiram, 3256 S	Glenn	Drainage Correction, C&G Repair & Concr. Base Repair	4	R	110	80	12	2	Asphalt			100	80		
2	Walker	Seneca	Meridian	Concrete Joints/Panels Repairs and Drainage Correction	4	R	1600		30	2	Concrete			150	150	5	
<b>Total</b>							<b>1710</b>					<b>0</b>	<b>0</b>	<b>250</b>	<b>230</b>	<b>5</b>	

CCD= City council District, R= Residential, C= Collector, A= Arterial,

**32nd St. S Location:**



**Walker Location:**

