

GENERAL NOTES

- ALL CONSTRUCTION AND MATERIALS SHALL COMPLY WITH THE CITY OF WICHITA SPECIFICATIONS AND STANDARDS.
- ALL ELEVATIONS SHOWN ARE CITY OF WICHITA DATUM. (U.S.G.S. -1187.4=CITY DATUM).
- UNDERGROUND UTILITY SERVICE LINES AND OVERHEAD UTILITY POLE LINES ARE TO BE ADJUSTED AS NECESSARY BY OTHERS PRIOR TO CONSTRUCTION UNLESS THE PLANS SPECIFICALLY CALL FOR THEIR ADJUSTMENT BY THE CONTRACTOR. EXISTING UTILITIES AND THEIR LOCATION, AS SHOWN ON THE PLANS, REPRESENT THE BEST INFORMATION OBTAINABLE FOR DESIGN. LOCATION INFORMATION HAS BEEN OBTAINED FROM THE VARIOUS UTILITY COMPANIES AND IS EITHER FROM COMPANY RECORD DRAWINGS OR COMPANY PROVIDED FIELD LOCATIONS. THE CONTRACTOR WILL BE REQUIRED TO WORK AROUND EXISTING UTILITIES WITHIN THE RIGHT-OF-WAY WHICH DO NOT CONFLICT WITH PROPOSED CONSTRUCTION.
- ALL LAWN/TURF AREAS DISTURBED BY CONSTRUCTION OF THE PROPOSED IMPROVEMENTS SHALL BE RESTORED WITH THE SAME GRASS/SOD AS EXISTING. RESTORATION OF DISTURBED AREAS SHALL INCLUDE, BUT NOT BE LIMITED TO, TOP SOIL PREPARATION, SEEDING, MULCH, AND/OR RESEEDING. ALL SEEDING/SODDING WORK SHALL BE IN ACCORDANCE WITH THE CITY OF WICHITA STANDARD SPECIFICATIONS AND THE CITY OF WICHITA ADMINISTRATIVE REGULATION NO. AR78 WHICH GOVERNS CLEANUP AND RESTORATION OR REPLACEMENT FOLLOWING CONSTRUCTION. ALL COSTS FOR THIS WORK SHALL BE SUBSIDIARY TO THE LUMP SUM PRICE BID FOR "SITE RESTORATION".
- RUBBLE FROM THE REMOVAL OF MISCELLANEOUS STRUCTURES SHALL BE DISPOSED OF ON SITES TO BE PROVIDED BY THE CONTRACTOR AND APPROVED AS NOTED BELOW. THIS WORK SHALL BE SUBSIDIARY TO "SITE RESTORATION".

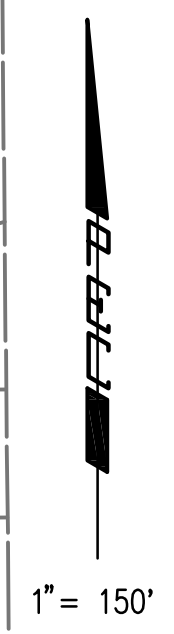
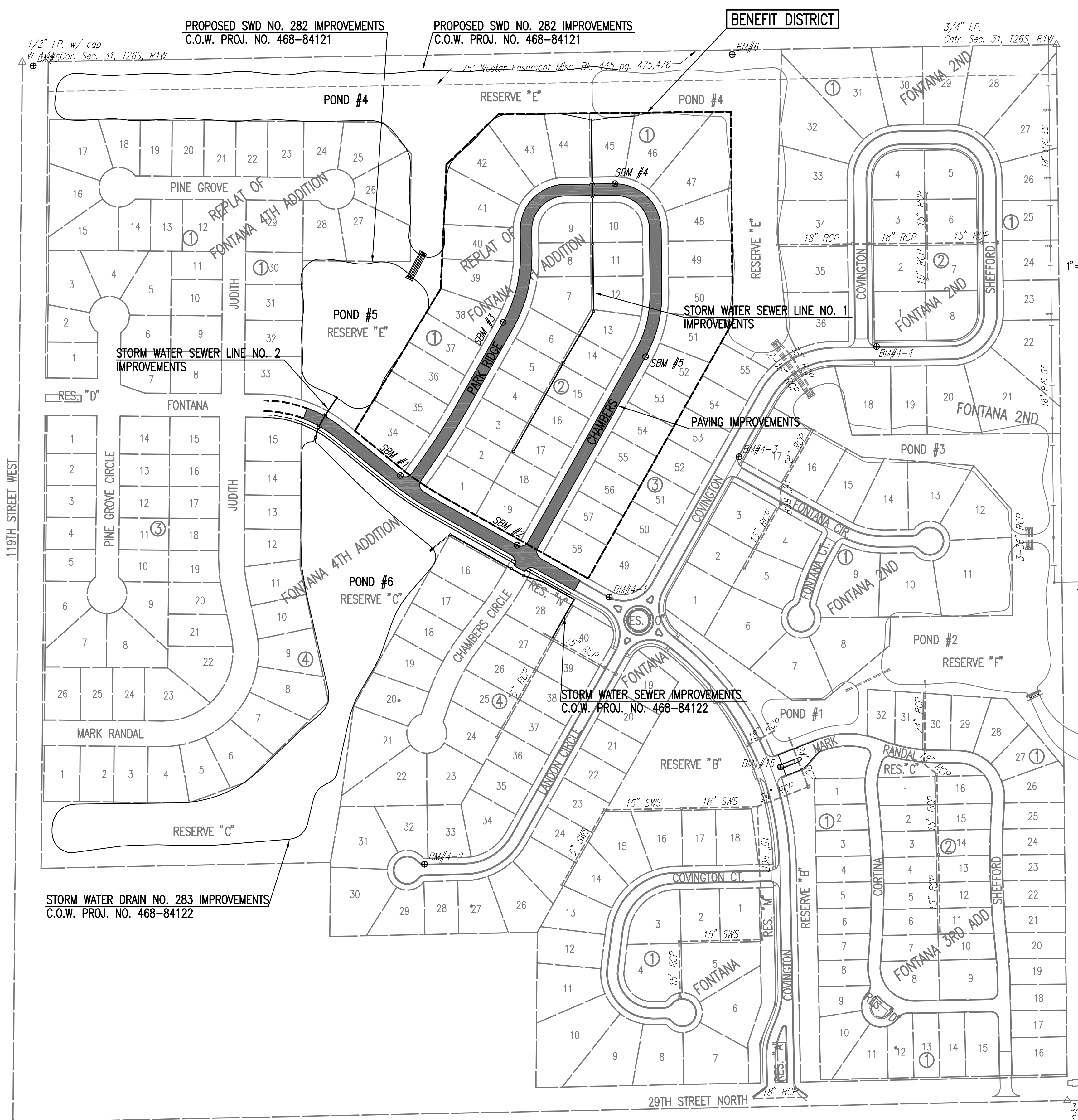
ALL DISPOSAL SITES MUST BE APPROVED BY THE KANSAS DEPARTMENT OF HEALTH AND ENVIRONMENT. MATERIAL EITHER STOCKPILED OR DISPOSED OF IN A FLOOD PLAIN WOULD REQUIRE A KANSAS STATE BOARD OF AGRICULTURE PERMIT. ANY MATERIAL DUMPED IN WATERS OF THE UNITED STATES OR WETLANDS IS SUBJECT TO U.S. CORPS OF ENGINEERS PERMITTING REGULATIONS. ANY MATERIAL BURIED OR STOCKPILED BEYOND APPROVED CONSTRUCTION LIMITS WOULD REQUIRE ADDITIONAL ARCHEOLOGICAL INVESTIGATIONS UNLESS BURIED IN A PREVIOUSLY APPROVED BORROW LOCATION.
- EACH BIDDER SHALL VISIT THE SITE OF THE PROJECT BEFORE SUBMITTING THE PROPOSAL FOR THIS WORK SO THAT HE WILL BE FULLY INFORMED OF THE EXISTING FIELD CONDITIONS AND THE OBSTACLES WHICH MIGHT BE ENCOUNTERED. UPON AWARD OF THE CONTRACT THE CONTRACTOR WILL NOT BE GRANTED ANY ADDITIONAL COMPENSATION WITH REGARDS TO TIME AND MONEY FOR CONDITIONS THAT MAY HAVE BEEN EVALUATED DURING ANY INSPECTION OF THE SITE.
- TEMPORARY SURFACING MATERIAL (ROCK, ASPHALT, ETC.) MAY HAVE BEEN PLACED WITHIN STREET RIGHTS-OF-WAY FOR HAUL ROADS AND TEMPORARY ACCESS. CONTRACTOR SHALL FIELD VERIFY EXISTING CONDITIONS TO DETERMINE EXTENT, IF ANY, OF SUCH SURFACING. CONTRACTOR SHALL REMOVE SAID TEMPORARY SURFACING IN THE SAME MANNER AS NOTED ABOVE FOR RUBBLE. THIS REMOVAL SHALL BE SUBSIDIARY TO "UNCLASSIFIED EXCAVATION".
- CONTRACTOR SHALL PROVIDE A MINIMUM SEVENTY-TWO (72) HOUR ADVANCE NOTICE (EXCLUDING WEEKENDS AND HOLIDAYS) PRIOR TO BEGINNING ANY EXCAVATION, TO KANSAS ONE-CALL SYSTEM, A UTILITY LOCATION SERVICE, AT (316) 687-2470 TO REQUEST THAT THE FOLLOWING UTILITY COMPANIES LOCATE ALL EXISTING LINES WITHIN THE PROJECT AREA: AQUILA GAS, WESTAR ENERGY SEDGWICK COUNTY ELEC. COOP., AT&T, COX COMMUNICATIONS, CITY OF WICHITA SEWER MAINTENANCE AND CITY OF WICHITA WATER DEPARTMENT.
- THE CONTRACTOR SHALL BE RESPONSIBLE FOR PRESERVING PROPERTY IRONS. THE CONTRACTOR WILL BE REQUIRED TO RE-ESTABLISH ANY PROPERTY IRONS WHICH ARE DAMAGED OR DESTROYED BY HIS CONSTRUCTION OPERATIONS OR COVERED BY 12" OR MORE OF FILL WITH THIS PROJECT. SUCH IRONS SHALL BE RE-ESTABLISHED BY A LICENSED LAND SURVEYOR IN ACCORDANCE WITH STATE LAWS. ALL COSTS FOR THIS WORK SHALL BE SUBSIDIARY TO THE LUMP SUM PRICE BID FOR "SITE RESTORATION".
- THE WATER DEPARTMENT SHALL FIELD LOCATE WATER VALVES ONE TIME DURING CONSTRUCTION WHEN REQUESTED BY THE CONTRACTOR. IT SHALL BE THE CONTRACTOR'S RESPONSIBILITY TO PRESERVE SUCH FIELD LOCATIONS DURING THE CONSTRUCTION PROCESS. WATER VALVES, WATER VALVE BOXES OR FIRE HYDRANTS DAMAGED DURING CONSTRUCTION SHALL BE REPAIRED BY THE CONTRACTOR AT HIS OWN EXPENSE.
- THE CONTRACTOR SHALL ADJUST WATER VALVE BOXES AS DIRECTED BY THE ENGINEER. THIS WORK TO BE SUBSIDIARY TO OTHER BID ITEMS.

CURB INLET PROTECTION	6 EACH
AREA INLET PROTECTION	4 EACH
BACK OF CURB PROTECTION	5,580 L.F.

BENCHMARK LIST

- BM #15- FOUND FROM FONTANA JRD, CHIS "D" CENTER WEST END OF MEDIAN AT INTERSECTION OF COVINGTON AND MARK RANDAL. ELEV. = 175.20
- BM #4-1- SET, CHIS "D" TOP OF CURB, NORTH SIDE FONTANA AT P.T. CURB, AND ± 93' WEST OF CENTER COVINGTON AND LANDON CIR. ELEV. = 176.935
- BM #4-2- SET, CHIS "D" TOP OF CURB, SOUTHEAST CORNER LOT 32, BLOCK 1, FONTANA ADDITION. ELEV. = 179.45
- BM #4-3- FOUND STREET BM-BRASS DISC IN TOP OF CURB, NORTH CURB RETURN, NORTHEAST CORNER COVINGTON AND FONTANA CIR. ELEV. = 172.30
- BM #4-4- FOUND STREET BM-BRASS DISC IN TOP OF CURB, EAST CURB RETURN, NORTHEAST CORNER SHEFFORD AND COVINGTON. ELEV. = 171.435
- BM #5 - SET R.R. SPIKE IN SOUTH FACE OF SOUTH POLE, 2 POLE ELECTRIC LINE STRUCTURE, ON EAST SIDE OF 119TH ST. W., 9' SOUTH AND 25' EAST OF W1/4 CORNER, SEC. 31, T26S, R1W. ELEV. = 171.135
- BM #6 - SET R.R. SPIKE IN SOUTH FACE OF SOUTH POLE, 2 POLE ELECTRIC LINE STRUCTURE, 2ND STRUCTURE WEST OF CENTER SECTION 31, T26S, R1W. ELEV. = 168.755

SEE SHEET NOS. 4 & 5 FOR COORDINATE LIST



Scaled 11-12-2010 12:05:57 PM by BJS
 Plot Scale 1:150 11-12-2010 2:21:40 PM by BILL J. SEKSON
 G:\2009\08389\000\08389-000-C-KEYMAP

Bar w/ cap
SW Cor. Sec. 31, T26S, R1W

3/4" I.P.
S 1/4 Cor. Sec. 31, T26S, R1W

No.	Revision	By	Date
FONTANA 4TH ADDITION-PHASE 1			
KEY MAP AND GENERAL NOTES			
JAMES L. ARMOUR, P.E.- CITY ENGINEER CITY OF WICHITA PROJ. NO. 472-84800 Professional Engineering Consultants, P.A. 303 S. TOPEKA • WICHITA, KANSAS 67202 316-262-2691 • FAX 316-262-3003			
Designed by	BMM	Job No.	35-08389-000
Drawn by	BJS	Date	July 2008
			Sheet 2 of 50