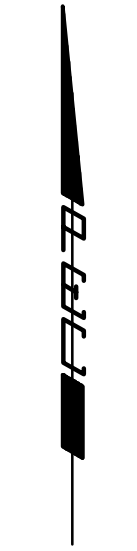


# FONTANA 4TH

AN ADDITION TO WICHITA, SEDGWICK COUNTY, KANSAS

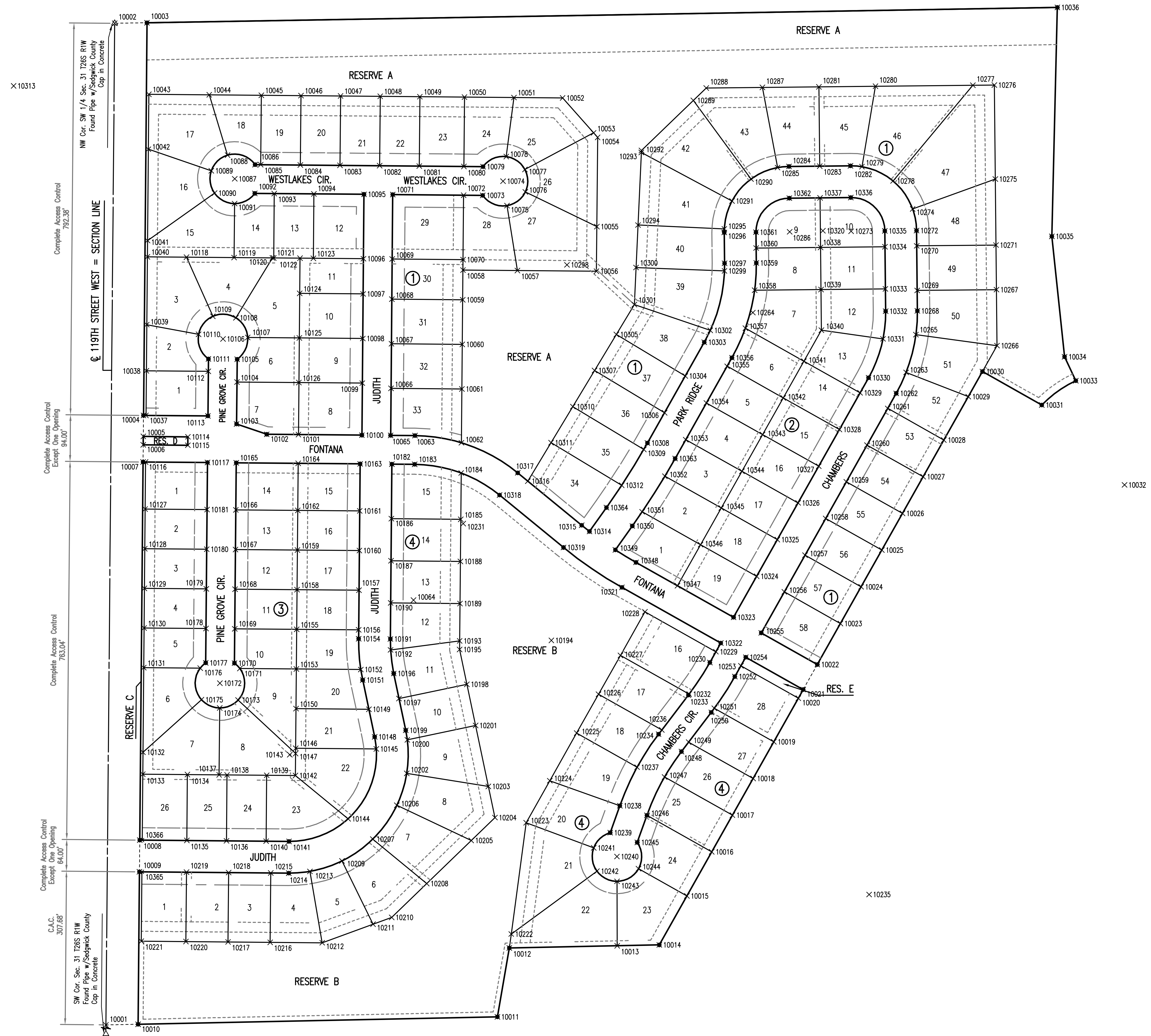
## BUBBLE MAP



SCALE: 1" = 100'

- = 1/2" REBAR W/PEC CAP UNLESS OTHERWISE NOTED
- △ = SECTION CORNER

SEE SHEET NO. 5  
FOR COORDINATE LIST



NW Cor. SW 1/4 Sec. 31 T26S R1W  
 Found Pipe w/ Sedgwick County  
 Cap in Concrete  
 Complete Access Control  
 792.38'  
 SECTION LINE  
 Complete Access Control  
 Except One Opening  
 94.00'  
 Complete Access Control  
 Except One Opening  
 763.04'  
 Complete Access Control  
 Except One Opening  
 64.00'  
 C.A.C.  
 307.68'  
 SW Cor. Sec. 31 T26S R1W  
 Found Pipe w/ Sedgwick County  
 Cap in Concrete

Scaled: 09-30-2010 1:10:50 PM by BJS  
 Plot Scale: 1:100 11-09-2010 1:34:07 PM by BILL J. SEKSON  
 C:\2009\08389\000\08389-000-C-PLAT COORDINATES

No.	Revision	By	Date
FONTANA 4TH ADDITION-PHASE 1			
<b>PLAT COORDINATES POINTS</b>			
JAMES L. ARMOUR, P.E. - CITY ENGINEER CITY OF WICHITA PROJ. NO. 472-84800			
<b>Professional Engineering Consultants, P.A.</b> 303 S. TOPEKA • WICHITA, KANSAS 67202 316-262-2691 • FAX 316-262-3003			
Designed by	BMM	Job No.	35-08389-000
Drawn by	BJS	Date	July 2008
			Sheet 4 of 50

