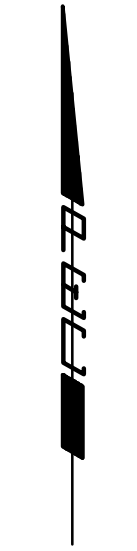


# FONTANA 4TH

AN ADDITION TO WICHITA, SEDGWICK COUNTY, KANSAS

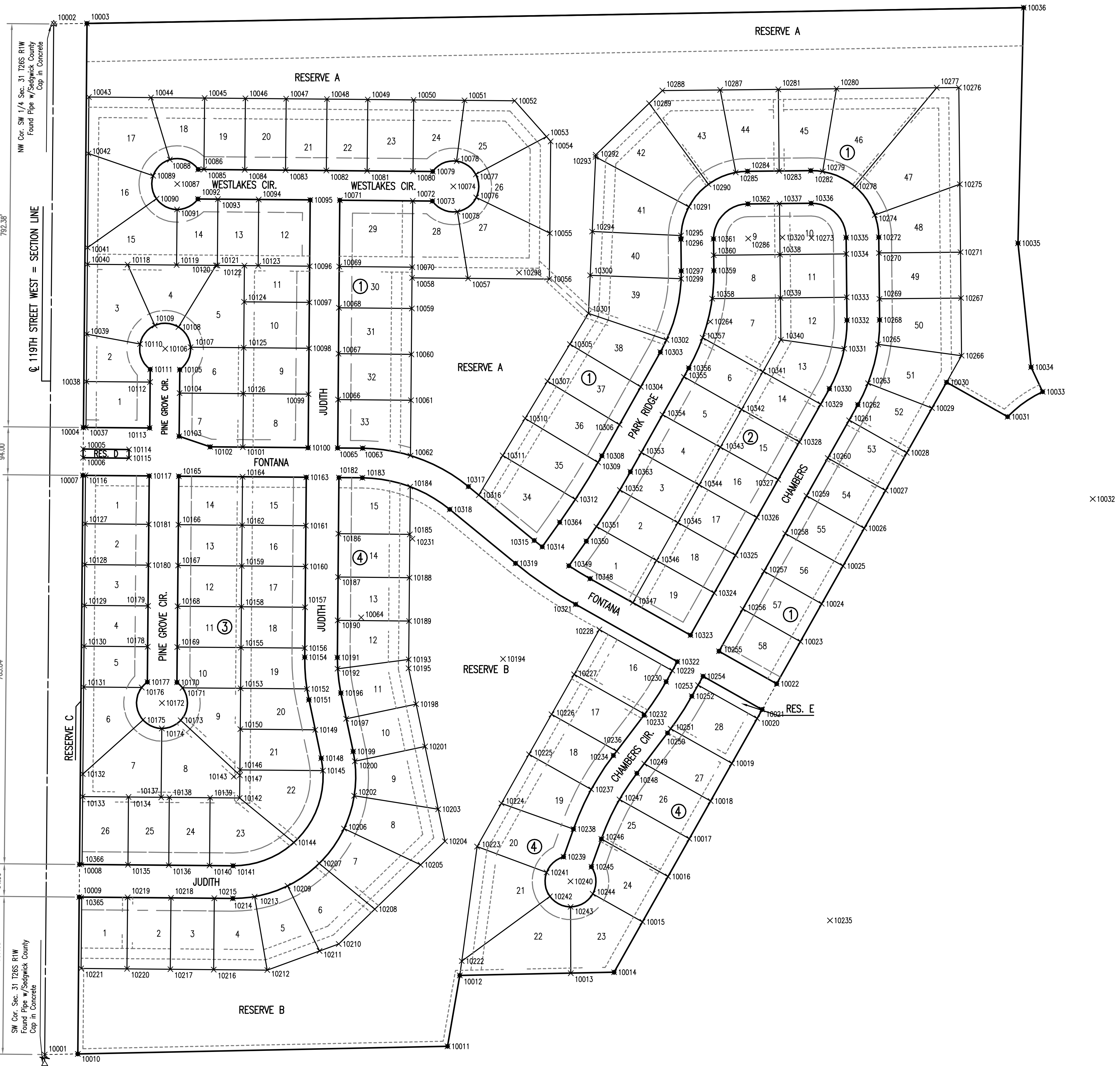
## BUBBLE MAP



SCALE: 1" = 100'

- = 1/2" REBAR W/PEC CAP UNLESS OTHERWISE NOTED
- △ = SECTION CORNER

SEE SHEET NO. 5  
FOR COORDINATE LIST



Complete Access Control Except One Opening 792.38'  
 Complete Access Control Except One Opening 94.00'  
 Complete Access Control Except One Opening 763.04'  
 Complete Access Control Except One Opening 64.00'  
 C.A.C. 307.68'  
 C.A.C. 307.68'

NW Cor. SW 1/4 Sec. 31 T26S R1W Found Pipe w/ Sedgwick County Cap in Concrete  
 SW Cor. Sec. 31 T26S R1W Found Pipe w/ Sedgwick County Cap in Concrete  
 C.A.C. 307.68'

Scaled 11-09-2010 2:13:35 PM by BJS  
 Plot Scale 1:100 11-09-2010 2:14:36 PM by BILL J. SEKSON  
 G:\2009\08389\003\08389-003-C-PLAT COORDINATES

No.	Revision	By	Date
	FONTANA 4TH ADDITION-PHASE 1 STORM WATER DRAIN NO. 282		
<b>PLAT COORDINATE POINTS</b>			
JAMES L. ARMOUR, P.E. - CITY ENGINEER CITY OF WICHITA PROJ. NO. 468-84121			
<b>Professional Engineering Consultants, P.A.</b> 303 S. TOPEKA • WICHITA, KANSAS 67202 316-262-2691 • FAX 316-262-3003			
Designed by	BMM	Job No.	35-08389-003
Drawn by	BJS	Date	July 2008
			Sheet 4 of 29

