

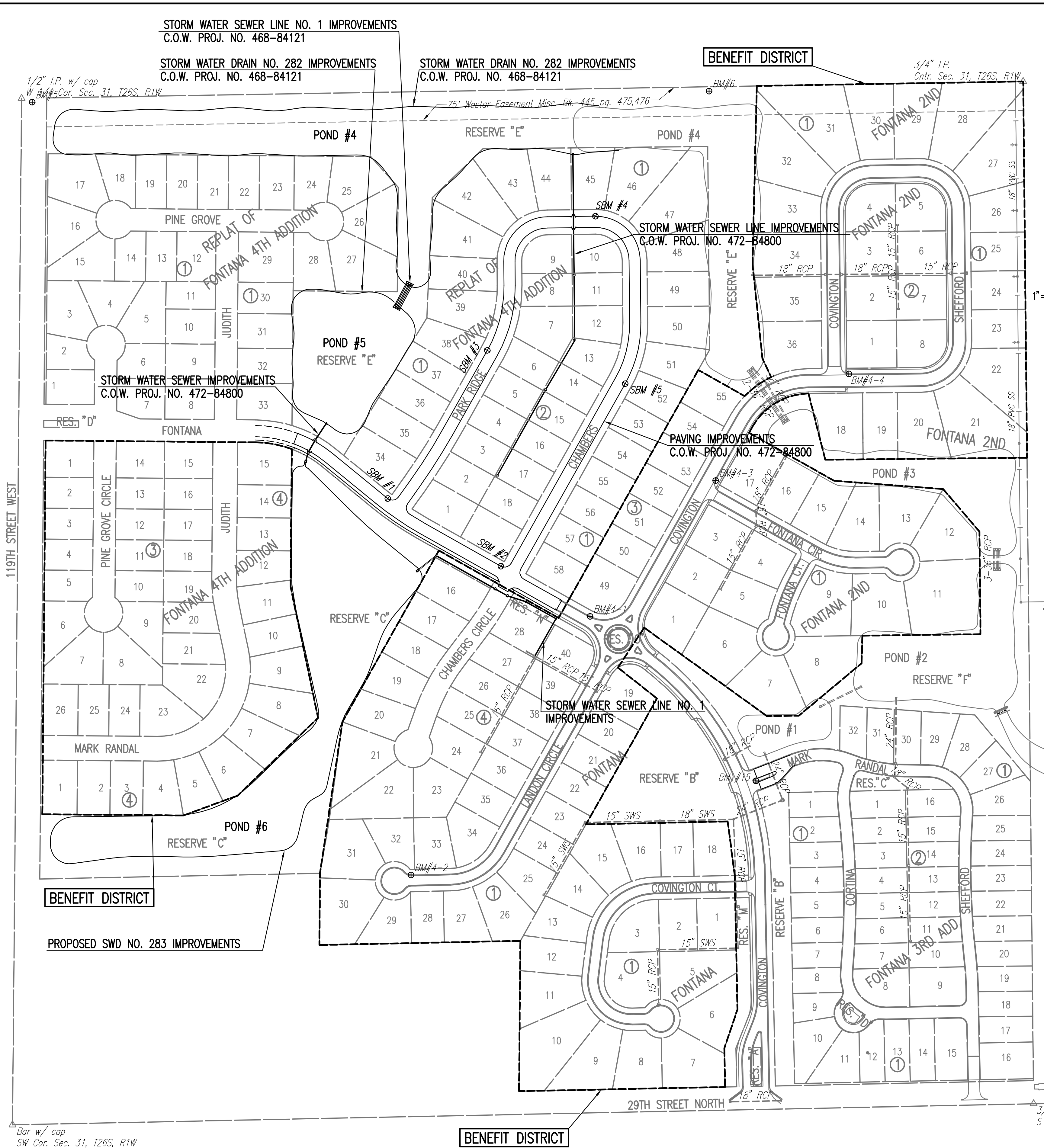
**GENERAL NOTES**

- ALL CONSTRUCTION AND MATERIALS SHALL COMPLY WITH THE CITY OF WICHITA SPECIFICATIONS AND STANDARDS.
- ALL ELEVATIONS SHOWN ARE CITY OF WICHITA DATUM. (U.S.G.S. -1187.4=CITY DATUM).
- UNDERGROUND UTILITY SERVICE LINES AND OVERHEAD UTILITY POLE LINES ARE TO BE ADJUSTED AS NECESSARY BY OTHERS PRIOR TO CONSTRUCTION UNLESS THE PLANS SPECIFICALLY CALL FOR THEIR ADJUSTMENT BY THE CONTRACTOR. EXISTING UTILITIES AND THEIR LOCATION, AS SHOWN ON THE PLANS, REPRESENT THE BEST INFORMATION OBTAINABLE FOR DESIGN. LOCATION INFORMATION HAS BEEN OBTAINED FROM THE VARIOUS UTILITY COMPANIES AND IS EITHER FROM COMPANY RECORD DRAWINGS OR COMPANY PROVIDED FIELD LOCATIONS. THE CONTRACTOR WILL BE REQUIRED TO WORK AROUND EXISTING UTILITIES WITHIN THE RIGHT-OF-WAY WHICH DO NOT CONFLICT WITH PROPOSED CONSTRUCTION.
- RUBBLE FROM THE REMOVAL OF MISCELLANEOUS STRUCTURES SHALL BE DISPOSED OF ON SITES TO BE PROVIDED BY THE CONTRACTOR AND APPROVED AS NOTED BELOW.  
  
ALL DISPOSAL SITES MUST BE APPROVED BY THE KANSAS DEPARTMENT OF HEALTH AND ENVIRONMENT. MATERIAL EITHER STOCKPILED OR DISPOSED OF IN A FLOOD PLAIN WOULD REQUIRE A KANSAS STATE BOARD OF AGRICULTURE PERMIT. ANY MATERIAL DUMPED IN WATERS OF THE UNITED STATES OR WETLANDS IS SUBJECT TO U.S. CORPS OF ENGINEERS PERMITTING REGULATIONS. ANY MATERIAL BURIED OR STOCKPILED BEYOND APPROVED CONSTRUCTION LIMITS WOULD REQUIRE ADDITIONAL ARCHEOLOGICAL INVESTIGATIONS UNLESS BURIED IN A PREVIOUSLY APPROVED BORROW LOCATION.
- EACH BIDDER SHALL VISIT THE SITE OF THE PROJECT BEFORE SUBMITTING THE PROPOSAL FOR THIS WORK SO THAT HE WILL BE FULLY INFORMED OF THE EXISTING FIELD CONDITIONS AND THE OBSTACLES WHICH MIGHT BE ENCOUNTERED. UPON AWARD OF THE CONTRACT THE CONTRACTOR WILL NOT BE GRANTED ANY ADDITIONAL COMPENSATION WITH REGARDS TO TIME AND MONEY FOR CONDITIONS THAT MAY HAVE BEEN EVALUATED DURING ANY INSPECTION OF THE SITE.
- CONTRACTOR SHALL PROVIDE A MINIMUM SEVENTY-TWO (72) HOUR ADVANCE NOTICE (EXCLUDING WEEKENDS AND HOLIDAYS) PRIOR TO BEGINNING ANY EXCAVATION, TO KANSAS ONE-CALL SYSTEM, A UTILITY LOCATION SERVICE, AT (316) 687-2470 TO REQUEST THAT THE FOLLOWING UTILITY COMPANIES LOCATE ALL EXISTING LINES WITHIN THE PROJECT AREA: AQUILA GAS, WESTAR ENERGY SEDGWICK COUNTY ELEC. COOP., AT&T, COX COMMUNICATIONS, CITY OF WICHITA SEWER MAINTENANCE AND CITY OF WICHITA WATER DEPARTMENT.
- CONTACT WESTAR ENERGY (OR ITS SUCCESSOR) ELECTRIC TRANSMISSION LINE ENGINEERING DEPARTMENT (CURRENTLY 785-575-8167) BEFORE CONDUCTING ANY PROPOSED CONSTRUCTION ACTIVITIES THAT COULD PLACE PEOPLE, EQUIPMENT, OR FACILITIES WITHIN WESTAR ENERGY'S EASEMENT DESIGNATED AS BOOK 445 PAGE 475, 476 DATED JUNE 2, 1959.
- THE CONTRACTOR SHALL BE RESPONSIBLE FOR PRESERVING PROPERTY IRONS. THE CONTRACTOR WILL BE REQUIRED TO RE-ESTABLISH ANY PROPERTY IRONS WHICH ARE DAMAGED OR DESTROYED BY HIS CONSTRUCTION OPERATIONS OR COVERED BY 12" (INCHES) OR MORE OF FILL WITH THIS PROJECT. SUCH IRONS SHALL BE RE-ESTABLISHED BY A LICENSED LAND SURVEYOR IN ACCORDANCE WITH STATE LAWS. ALL COSTS FOR THIS WORK SHALL BE SUBSIDIARY TO THE LUMP SUM PRICE BID FOR "SITE RESTORATION".
- TEMPORARY SURFACING MATERIAL (ROCK, ASPHALT, ETC.) MAY HAVE BEEN PLACED WITHIN STREET RIGHTS-OF-WAY FOR HAUL ROADS AND TEMPORARY ACCESS. CONTRACTOR SHALL FIELD VERIFY EXISTING CONDITIONS TO DETERMINE EXTENT, IF ANY, OF SUCH SURFACING. CONTRACTOR SHALL REMOVE SAID TEMPORARY SURFACING IN THE SAME MANNER AS NOTED ABOVE FOR RUBBLE. THIS REMOVAL SHALL BE SUBSIDIARY TO "UNCLASSIFIED EXCAVATION".
- THE WATER DEPARTMENT SHALL FIELD LOCATE WATER VALVES ONE TIME DURING CONSTRUCTION WHEN REQUESTED BY THE CONTRACTOR. IT SHALL BE THE CONTRACTOR'S RESPONSIBILITY TO PRESERVE SUCH FIELD LOCATIONS DURING THE CONSTRUCTION PROCESS. WATER VALVES, WATER VALVE BOXES OR FIRE HYDRANTS DAMAGED DURING CONSTRUCTION SHALL BE REPAIRED BY THE CONTRACTOR AT HIS OWN EXPENSE.
- THE CONTRACTOR SHALL APPLY TEMPORARY SEED AND MULCH TO ALL UNPAVED AREAS DISTURBED BY HIS CONSTRUCTION OPERATIONS WITHIN 14 DAYS AFTER SUCH OPERATIONS CEASE IN ACCORDANCE WITH THE STANDARD SPECIFICATIONS. SEED SHALL BE ANNUAL RYE APPLIED AT THE RATE OF 5 LBS. PER 1,000 SQUARE FEET. MULCH SHALL BE PRAIRIE HAY APPLIED AT THE RATE OF 15 BALES PER ACRE. THIS WORK SHALL BE PAID FOR AT THE CONTRACT LUMP SUM PRICE BID FOR "TEMPORARY SEEDING".
- IN THE PROPER SEASON, CONTRACTOR SHALL APPLY PERMANENT SEED, FERTILIZER, AND MULCH TO ALL UNPAVED AREAS DISTURBED BY CONSTRUCTION SOUTH OF POND #6. SEED SHALL BE BUFFALO. PLANTING SEASON, APPLICATION RATE, FERTILIZER, AND FERTILIZER RATE SHALL CONFORM TO CITY OF WICHITA STANDARD SPECIFICATIONS. THIS WORK SHALL BE PAID FOR AT THE CONTRACT LUMP SUM PRICE BID FOR "PERMANENT SEEDING".
- EROSION CONTROL (BMP'S)  
THE CONTRACTOR SHALL INSTALL AND/OR MAINTAIN EROSION CONTROL METHODS AS SPECIFIED ON THE EROSION CONTROL PLAN CONTAINED HEREIN. THE FOLLOWING QUANTITIES ARE ESTIMATED, AND SHOULD BE CONSIDERED THE MINIMUM EFFORT REQUIRED. INSTALLATION OF THESE BMP'S DOES NOT RELIEVE THE CONTRACTOR OF THE RESPONSIBILITY OF ABATING SOIL EROSION.  
  
SILT FENCE BARRIER 4,917 L.F.
- THE CROSS SECTION SHEETS ARE FOR INFORMATION ONLY. THEY ARE NOT INTENDED TO BE USED FOR CALCULATING SITE GRADING SINCE THEY DO NOT PROVIDE COVERAGE FOR THE ENTIRE PROJECT SITE. THE CONTRACT BID QUANTITY FOR "UNCLASSIFIED EXCAVATION" IS AS SHOWN ON THE TITLE SHEET.
- CONTRACTOR SHALL CONTACT THE DEVELOPER AT LEAST TEN (10) DAYS PRIOR TO COMPLETION OF POND SEALING SO THE DEVELOPER CAN PREPARE TO PUMP THE PONDS FULL. ALL REQUIREMENTS FOR POND SEALING MUST BE MET BEFORE PONDS ARE PUMP FULL.

**BENCHMARK LIST**

- BM #15- FOUND FROM FONTANA JRD, CHIS "D" CENTER WEST END OF MEDIAN AT INTERSECTION OF COVINGTON AND MARK RANDAL. ELEV. = 175.20
- BM #4-1- SET, CHIS "D" TOP OF CURB, NORTH SIDE FONTANA AT P.T. CURB, AND ± 93' WEST OF CENTER COVINGTON AND LANDON CIR. ELEV. = 176.935
- BM #4-2- SET, CHIS "D" TOP OF CURB, SOUTHEAST CORNER LOT 32, BLOCK 1, FONTANA ADDITION. ELEV. = 179.45
- BM #4-3- FOUND STREET BM-BRASS DISC IN TOP OF CURB, NORTH CURB RETURN, NORTHEAST CORNER COVINGTON AND FONTANNA CIR. ELEV. = 172.30
- BM #4-4- FOUND STREET BM-BRASS DISC IN TOP OF CURB, EAST CURB RETURN, NORTHEAST CORNER SHEFFORD AND COVINGTON. ELEV. = 171.435
- BM #5 - SET R.R. SPIKE IN SOUTH FACE OF SOUTH POLE, 2 POLE ELECTRIC LINE STRUCTURE, ON EAST SIDE OF 119TH ST. W., 9' SOUTH AND 25' EAST OF W1/4 CORNER, SEC. 31, T26S, R1W. ELEV. = 171.135
- BM #6 - SET R.R. SPIKE IN SOUTH FACE OF SOUTH POLE, 2 POLE ELECTRIC LINE STRUCTURE, 2ND STRUCTURE WEST OF CENTER SECTION 31, T26S, R1W. ELEV. = 168.755

SEE SHEET NOS. 4 & 5 FOR COORDINATE LIST



Served 11-12-2010 11:22:23 AM by BJS  
 Plot Scale 1:150 11-12-2010 3:51:26 PM by BILL J. SEKSON  
 G:\2009\08389\04\08389-04-C-KEYMAP

No.	Revision	By	Date
	FONTANA 4TH ADDITION-PHASE 2 STORM WATER DRAIN NO. 282		
<b>KEY MAP AND GENERAL NOTES</b>			
JAMES L. ARMOUR, P.E. - CITY ENGINEER CITY OF WICHITA PROJ. NO. 468-84122			
<b>Professional Engineering Consultants, P.A.</b> 303 S. TOPEKA • WICHITA, KANSAS 67202 316-262-2691 • FAX 316-262-3003			
Designed by	BMM	Job No.	35-08389-004
Drawn by	BJS	Date	September 2009
			Sheet 2 of 28