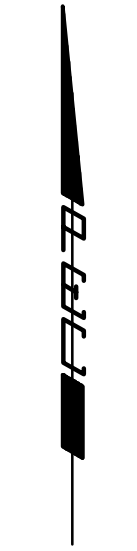


FONTANA 4TH

AN ADDITION TO WICHITA, SEDGWICK COUNTY, KANSAS

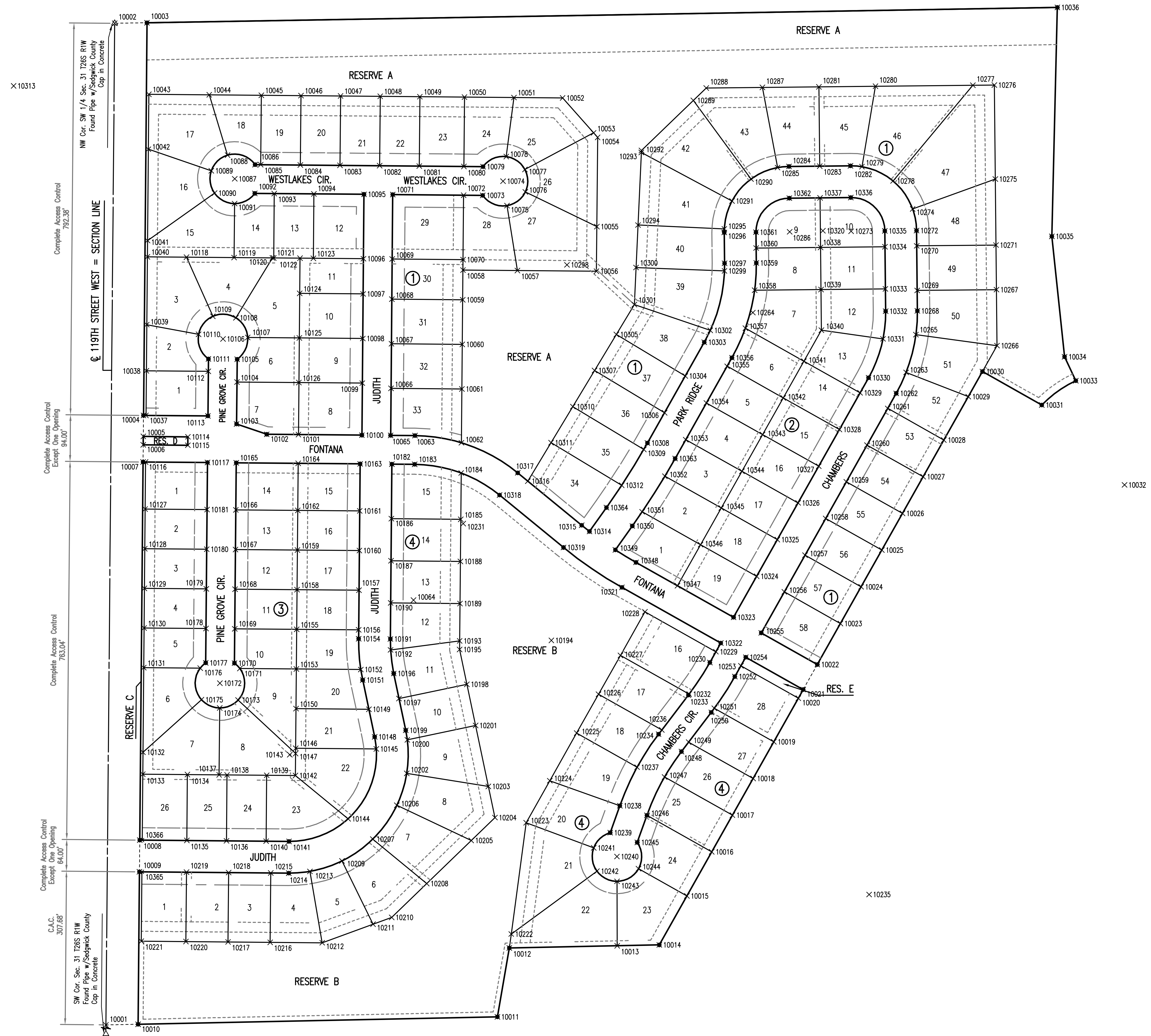
BUBBLE MAP



SCALE: 1" = 100'

- = 1/2" REBAR W/PEC CAP UNLESS OTHERWISE NOTED
- △ = SECTION CORNER

SEE SHEET NO. 5
FOR COORDINATE LIST



Scaled 09-30-2010 2:30:01 PM by BJS
 Plot Scale 1:100 11-09-2010 2:34:51 PM by BILL J. SEKSON
 C:\2009\08389\004\08389-004-C-PLAT COORDINATES

C.A.C.
 307.68'
 SW Cor. Sec. 31 T26S R1W
 Found Pipe w/Sedgwick County
 Cap in Concrete

Complete Access Control
 Except One Opening
 792.38'
 NW Cor. SW 1/4 Sec. 31 T26S R1W
 Found Pipe w/Sedgwick County
 Cap in Concrete

Complete Access Control
 Except One Opening
 94.00'

Complete Access Control
 763.04'

Complete Access Control
 Except One Opening
 64.00'

No.	Revision	By	Date
	FONTANA 4TH ADDITION-PHASE 2 STORM WATER DRAIN NO. 283		
PLAT COORDINATE POINTS			
JAMES L. ARMOUR, P.E.- CITY ENGINEER CITY OF WICHITA PROJ. NO. 468-84122			
Professional Engineering Consultants, P.A. 303 S. TOPEKA • WICHITA, KANSAS 67202 316-262-2691 • FAX 316-262-3003			
Designed by	BMM	Job No.	35-08389-004
Drawn by	BJS	Date	September 2009
			Sheet 4 of 28

