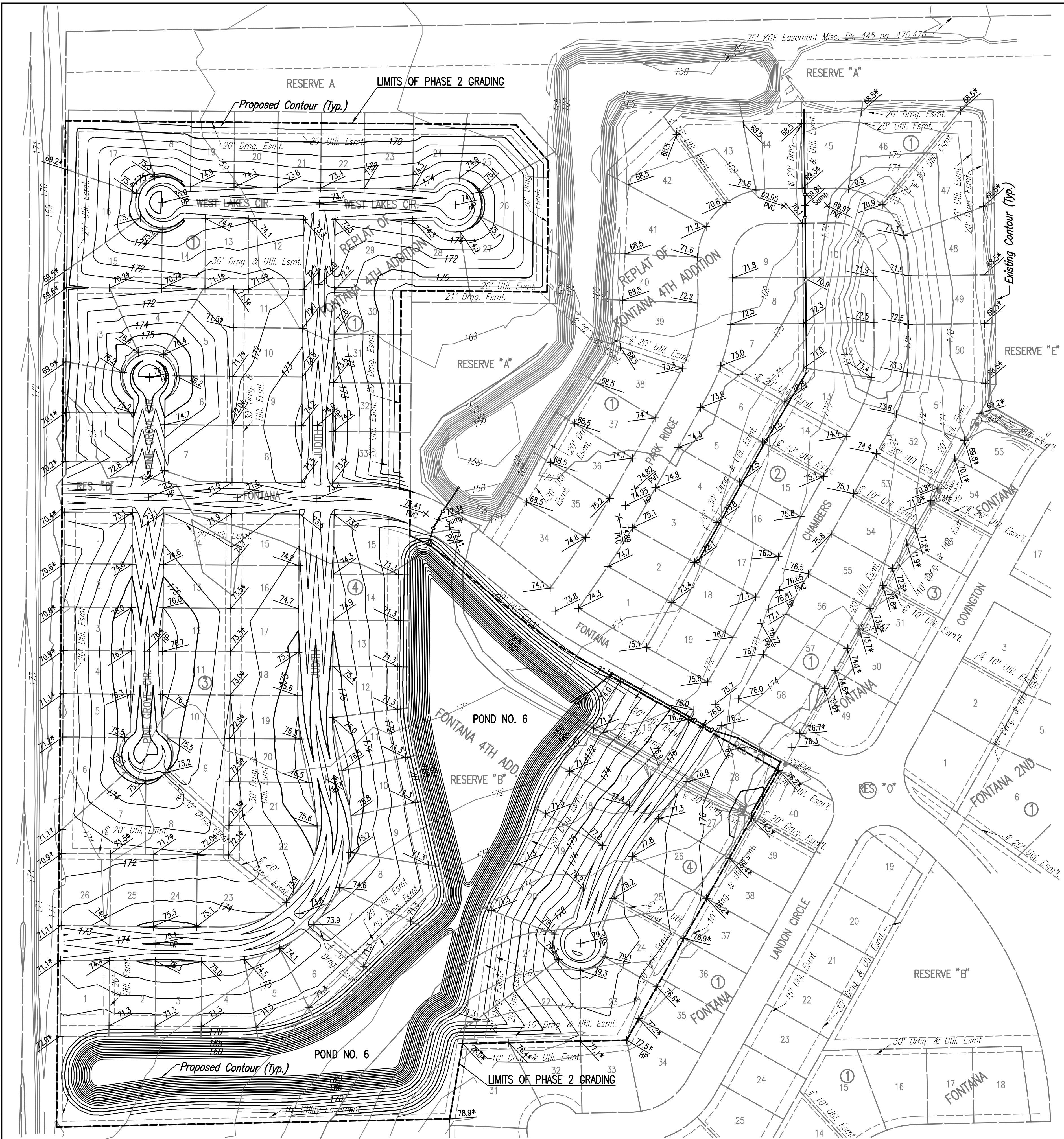
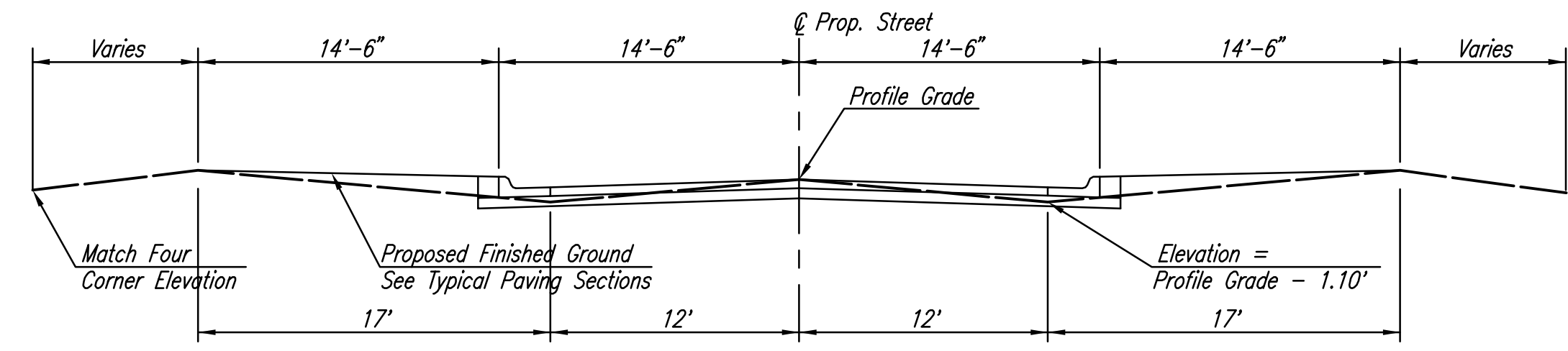


Saved: 11-09-2010 8:55:29 AM by BJS  
 Plot Scale: 1:100 11-12-2010 3:52:59 PM by BILL J. SEKSON  
 G:\2009\08389\004\08389-004-C-SITE GRADING PLAN

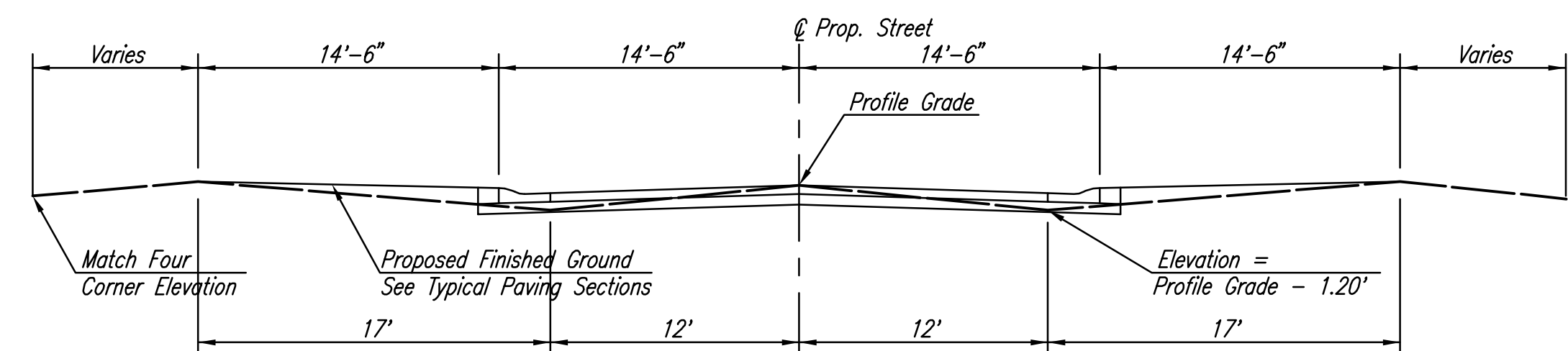


**LEGEND**

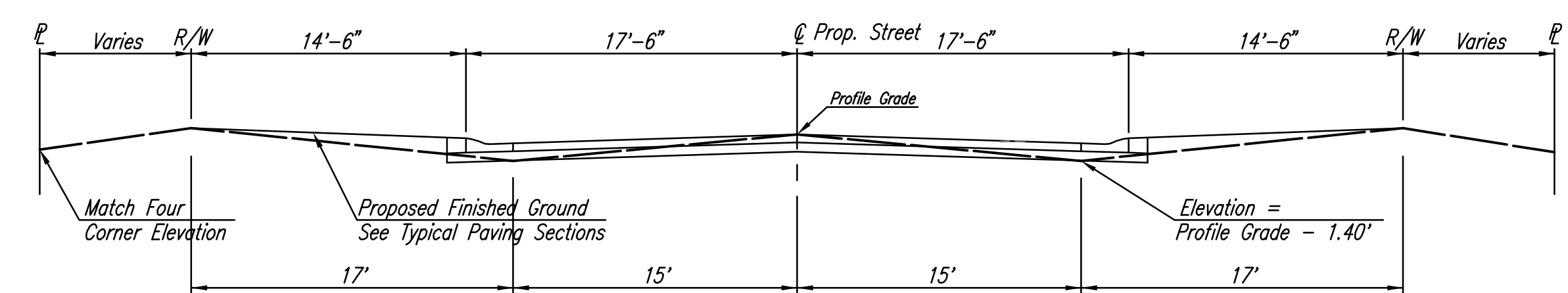
- + 75.0 SPOT ELEVATION (DIRT GRADE)
- + 76.0 H.P. HIGH POINT ELEVATION
- + 75.0\* MATCH EXISTING ELEVATION
- + 75.0\*\* ELEVATIONS DIFFER FROM FOUR CORNER PLAN TO PROVIDE POSITIVE DRAINAGE AWAY FOR SITE.
- PROPOSED CONTOUR
- EXISTING CONTOUR
- CONTOUR INTERVAL: 1 FOOT
- ADD 100 TO ELEVATIONS FOR C.O.W. DATUM.



TYPICAL 58' R/W SECTION



TYPICAL 58' R/W SECTION



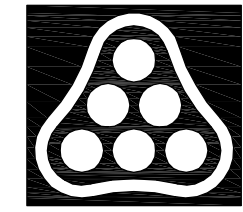
TYPICAL 64' R/W SECTION

**SITE GRADING NOTES**

THE CONTRACTOR SHALL USE EXCESS EXCAVATED MATERIAL FROM THIS PROJECT TO GRADE LOTS WITHIN FONTANA 4TH ADDITION, PER THIS GRADING PLAN.  
 ALL FILL PLACED IN STREET RIGHT-OF-WAY SHALL BE COMPACTED TO 90% STANDARD DENSITY PER CITY OF WICHITA REQUIREMENTS.  
 FILL PLACED AS PART OF SITE GRADING SHALL BE COMPACTED TO TYPE B (MR-90) REQUIREMENTS.  
 ALL FILL MATERIAL SHALL BE BLADED SMOOTH AND SLOPED TO DRAIN.  
 NO WASTE MATERIAL SHALL BE PLACED IN ANY STREET RIGHT-OF-WAY OTHER THAN AS NECESSARY FOR STREET CONSTRUCTION AS SHOWN IN THESE PLANS.  
 THE LUMP SUM BID ITEM "MASS GRADING" SHALL INCLUDE PLACING, GRADING, AND COMPACTING OF SOIL MATERIAL TO THE REQUIREMENTS OF THIS GRADING PLAN; AND FOR ALL EQUIPMENT, LABOR, TOOLS, AND INCIDENTALS NECESSARY TO COMPLETE THE WORK.  
 THE ACTUAL EXCAVATION OF MATERIAL FOR SITE GRADING IS INCLUDED IN THE BID ITEM "UNCLASSIFIED EXCAVATION".

SEE PHASE 1 STORM WATER DRAIN PLANS FOR ADDITIONAL GRADING REQUIREMENTS.  
 PEC PROJECT NO. 35-08389-003-042  
 CITY OF WICHITA PROJECT NO. 468-84121

SEE PAVING PLANS FOR ADDITIONAL GRADING REQUIREMENTS.  
 PEC PROJECT NO. 35-08389-000-042  
 CITY OF WICHITA PROJECT NO. 472-84800



No.	Revision	By	Date
	FONTANA 4TH ADDITION-PHASE 2 STORM WATER DRAIN NO. 283		
	<b>SITE GRADING PLAN</b>		
	JAMES L. ARMOUR, P.E. - CITY ENGINEER CITY OF WICHITA PROJ. NO. 468-84122		
	Professional Engineering Consultants, P.A. 303 S. TOPKA • WICHITA, KANSAS 67202 316-262-2691 • FAX 316-262-3003		
Designed by	BMM	Job No.	35-08389-004
Drawn by	BJS	Date	September 2009
		Sheet	7 of 28