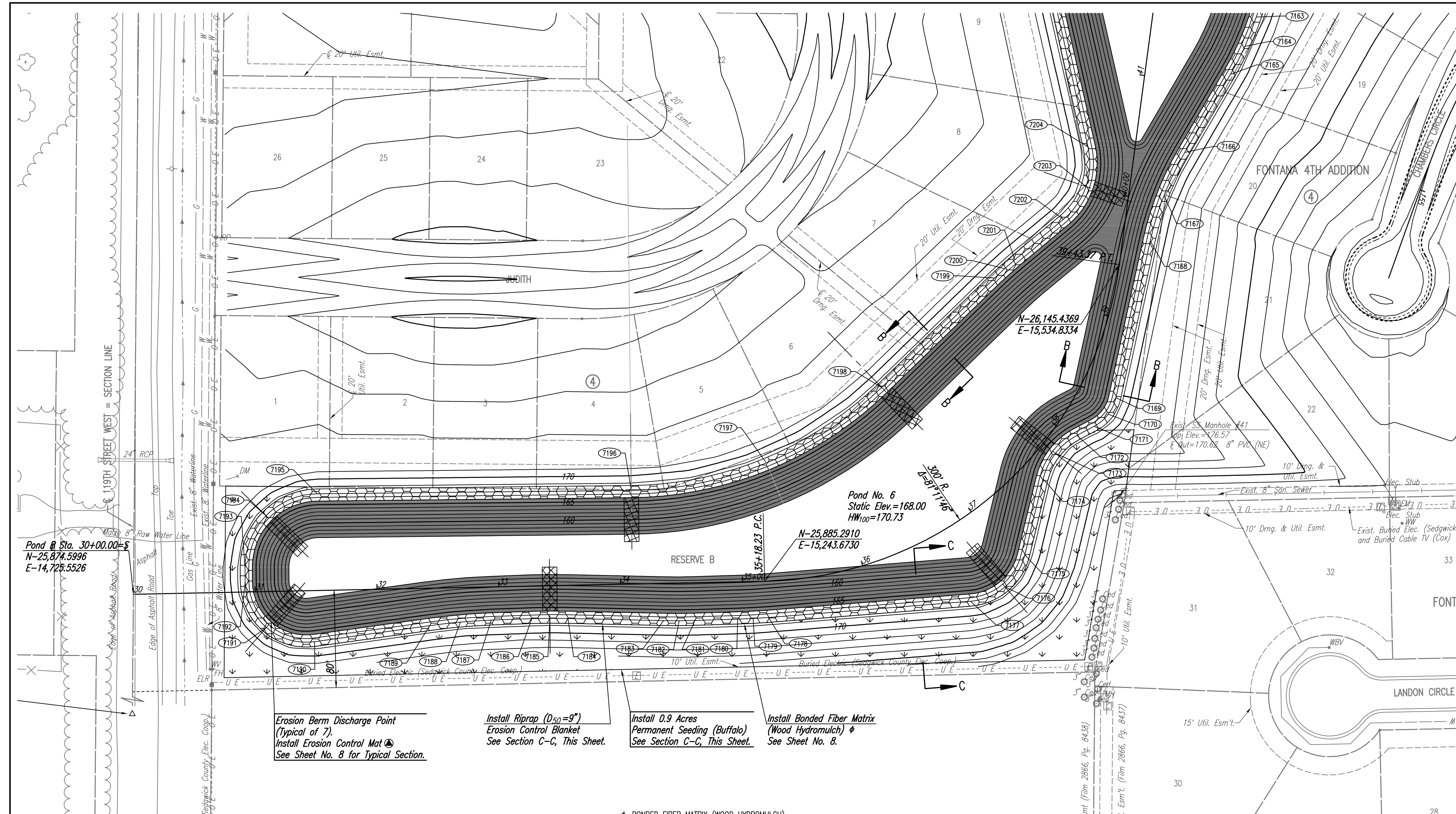
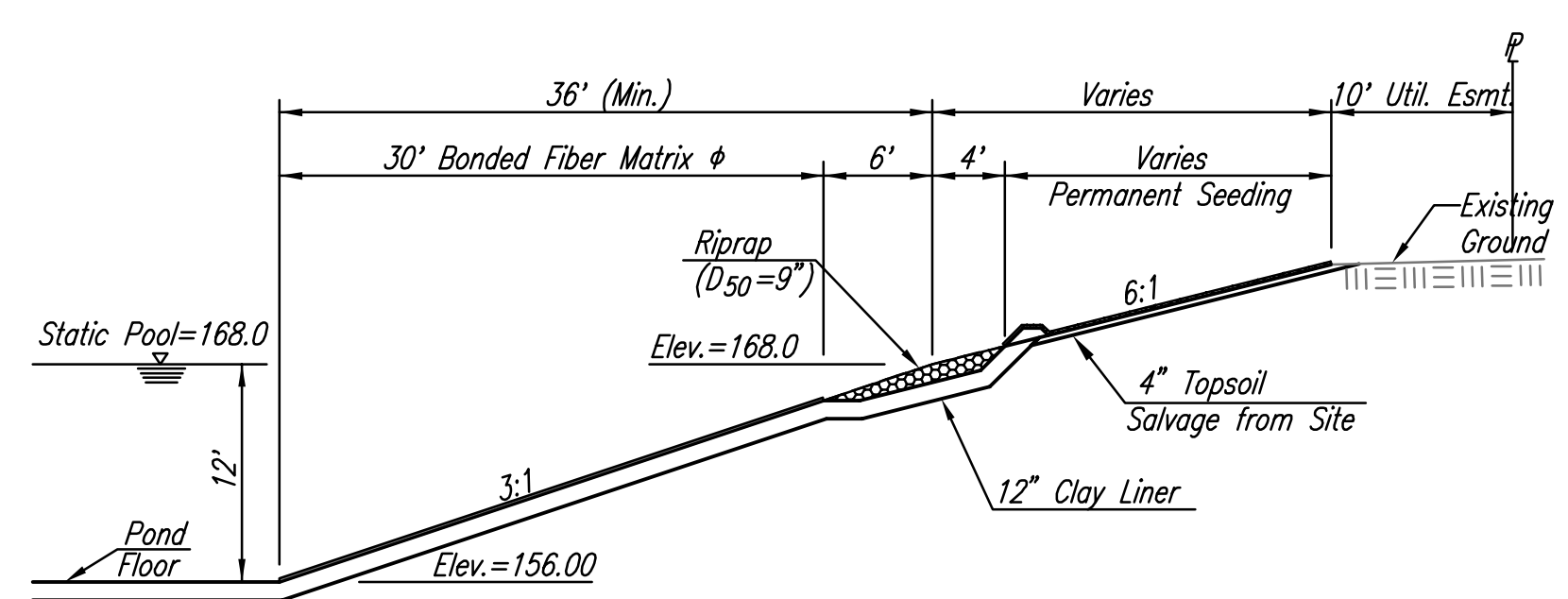


COORDINATE LIST-PT. AT ELEV. 168.0		
POINT	NORTH	EAST
7151	26,840.8674	15,443.3702
7152	26,862.7786	15,458.2394
7153	26,857.6695	15,484.2219
7154	26,742.3832	15,601.1053
7155*	26,710.2060	15,635.2979
7156	26,679.6691	15,670.9633
7157	26,601.9932	15,766.1184
7158	26,577.8492	15,778.8593
7159	26,551.8988	15,770.3839
7160	26,486.6877	15,713.6144
7161*	26,446.5643	15,685.1086
7162	26,401.6337	15,665.0162
7163	26,348.6897	15,647.3584
7164	26,324.6529	15,637.9364
7165	26,301.7160	15,626.0857
7166	26,237.4803	15,588.5741
7167	26,202.2336	15,571.5404
7168	26,164.7598	15,560.2178
7169	26,036.1037	15,532.1155
7170	26,022.4010	15,525.7921
7171	26,012.6344	15,514.2871
7172	26,005.1531	15,500.1440
7173*	25,990.2839	15,482.4320
7174	25,969.4481	15,472.3982
7175	25,906.9489	15,457.3035
7176*	25,880.6700	15,441.1769
7177	25,868.8475	15,412.7011
7178	25,855.5416	15,246.9166
7179	25,854.6855	15,234.2282
7180	25,854.1524	15,221.5223
7181	25,853.1275	15,186.4583
7182	25,852.9172	15,173.5899
7183	25,853.0380	15,160.7203
7184	25,854.7860	15,082.2215
7185*	25,854.8964	15,067.4215
7186	25,854.5688	15,052.6247
7187	25,853.3381	15,019.3236
7188	25,851.7546	14,993.9617
7189	25,848.8846	14,968.7130
7190	25,835.7064	14,874.2389
7191*	25,847.3623	14,834.6774
7192	25,884.7811	14,817.3332
7193	25,896.6060	14,817.2278
7194*	25,939.1482	14,834.3839
7195	25,957.1375	14,876.5806
7196*	25,959.9066	15,134.2178
7197	25,982.4519	15,245.1361
7198*	26,044.4893	15,339.8067
7199	26,134.3622	15,432.5146
7200	26,142.0327	15,440.7295
7201	26,149.3900	15,449.2259
7202	26,182.6229	15,489.0890
7203*	26,209.4896	15,507.5074
7204	26,242.0207	15,509.1733
7205	26,484.3642	15,454.0298
7206	26,490.5034	15,452.7338
7207	26,496.6803	15,451.6310
7208	26,548.9950	15,443.1356
7209*	26,552.8358	15,442.6385
7210	26,556.7007	15,442.3902
7211	26,600.4446	15,440.9957
7212	26,611.3753	15,440.7668
7213	26,622.3084	15,440.7770

(7151) = COORDINATE POINT NO.  
SEE SHEET NO. 4 FOR PLAT COORDINATES  
\* CENTERLINE OF DISCHARGE POINT



- Erosion Berm Discharge Point (Typical of 7). Install Erosion Control Mat. See Sheet No. 8 for Typical Section.
- Install Riprap (D<sub>50</sub>=9") Erosion Control Blanket. See Section C-C, This Sheet.
- Install 0.9 Acres Permanent Seeding (Buffalo). See Section C-C, This Sheet.
- Install Bonded Fiber Matrix (Wood Hydromulch) φ. See Sheet No. 8.



φ BONDED FIBER MATRIX (WOOD HYDROMULCH) SHALL BE SPRAYMATT OR APPROVED EQUAL.

PAID FOR AS S.Y. "BONDED FIBER MATRIX" AS INDICATED IN PLANS AND INCLUDES RYEGRASS SEED INSTALLED AT 5 LBS. PER 1,000 SQUARE FEET. THE BID PRICE SHALL BE CONSIDERED FULL COMPENSATION FOR ALL MATERIALS, LABOR, EQUIPMENT, TOOLS, AND INCIDENTALS NECESSARY TO COMPLETE THE WORK.

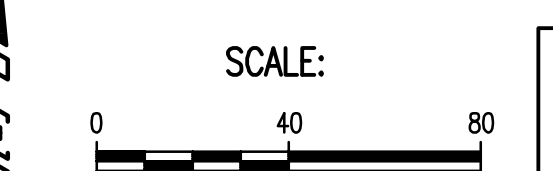
▲ EROSION CONTROL MAT SHALL BE LANDLOK TRM 450, NORTH AMERICAN GREEN C350 OR EQUIVALENT. INSTALLED PER MANUFACTURER'S RECOMMENDATIONS.

PAID FOR AS S.Y. "EROSION CONTROL MAT" AS INDICATED IN PLANS. THE BID PRICE SHALL BE CONSIDERED FULL COMPENSATION FOR ALL MATERIALS, LABOR, EQUIPMENT, TOOLS, AND INCIDENTALS NECESSARY TO COMPLETE THE WORK.

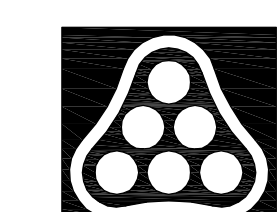
- LEGEND**
- RIPRAP (D<sub>50</sub>=9")
  - PERMANENT SEEDING
  - BONDED FIBER MATRIX
  - EROSION CONTROL MAT

EROSION CONTROL MAT	
POINT	AREA (S.Y.)
7155*	48
7161*	48
7173*	48
7176*	48
7185*	48
7191*	48
7194*	48
7196*	48
7198*	48
7203*	36
7209*	48
TOTAL	516

\* CENTERLINE OF DISCHARGE POINT



See Previous Sheet for Section A-A and Section B-B and Pond Grading Notes and Pond Sealing Notes.



No.	Revision	By	Date
FONTANA 4TH ADDITION-PHASE 2 STORM WATER DRAIN NO. 283 <b>GRADING PLAN-POND 6</b> JAMES L. ARMOUR, P.E.- CITY ENGINEER CITY OF WICHITA PROJ. NO. 468-84122 <b>Professional Engineering Consultants, P.A.</b> 303 S. TOPKA • WICHITA, KANSAS 67202 316-262-2691 • FAX 316-262-3003			
Designed by	BMM	Job No.	35-08389-004
Drawn by	BJS	Date	September 2009
			Sheet 9 of 28