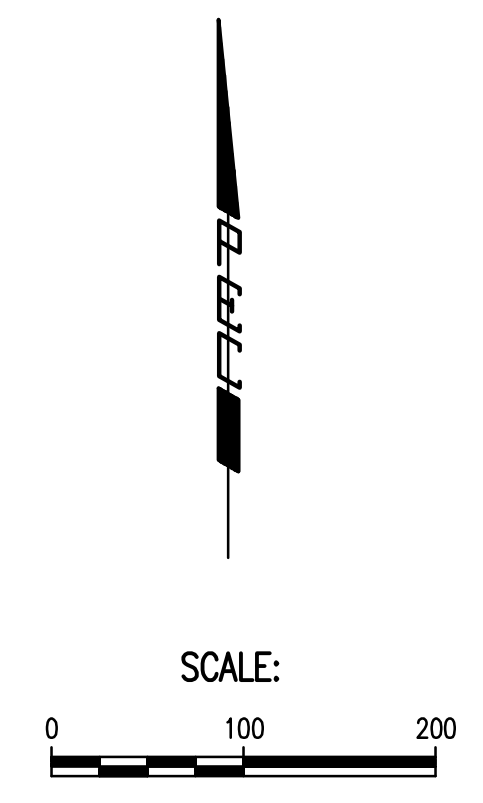
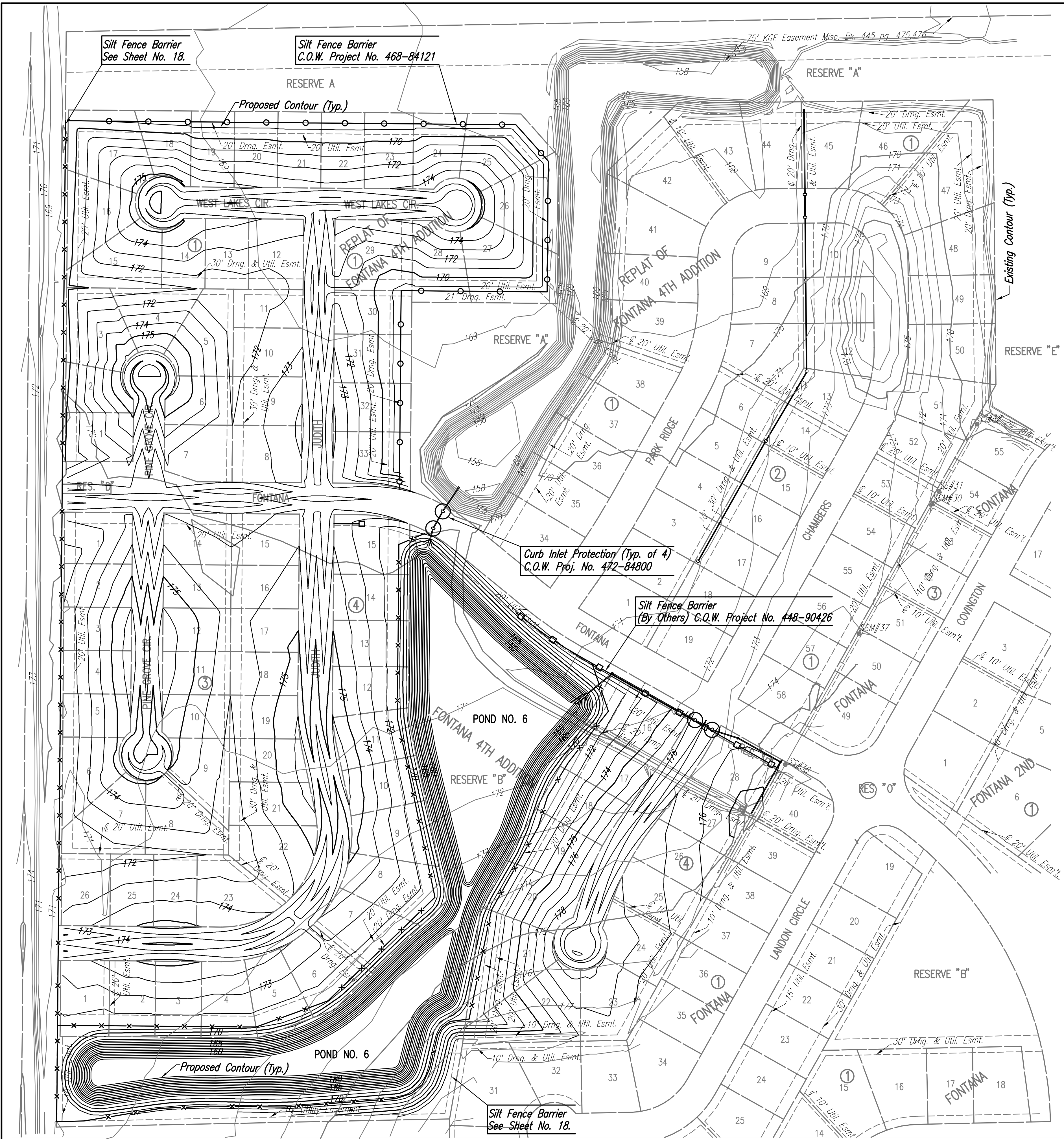


Saved: 11-12-2010 11:22:01 AM by: BJS
 Plot Scale: 1:100 11-12-2010 4:01:16 PM by: BILL J. SEKSON
 C:\2009\08389\004\08389-004-C-EROSION CONTROL PLAN



LEGEND

	SILT FENCE (CITY OF WICHITA PROJECT NO. 448-90426)
	SILT FENCE (CITY OF WICHITA PROJECT NO. 468-84121)
	SILT FENCE (TO BE BID STORM WATER DRAIN PROJECT)
	DITCH CHECKS (WATERLINE)
	DITCH CHECKS (SANITARY SEWER)
	DITCH CHECKS (STORM WATER DRAIN)
	STABILIZED CONSTRUCTION ENTRANCE
	PROPOSED CURB INLET PROTECTION

- GENERAL NOTES**
- CONTRACTOR SHALL INSTALL AND MAINTAIN EROSION PROTECTION THROUGHOUT THE ENTIRE PROJECT. THE FOLLOWING QUANTITIES ARE FOR INFORMATION ONLY, AND SHALL BE INCLUDED IN THE EROSION CONTROL LUMP SUM BID ITEMS FOR EACH RESPECTIVE PART. EROSION PROTECTION SHALL BE INCLUDED IN THE BID AS FOLLOWS:

STORM WATER DRAIN	4,917 L.F.
SILT FENCE BARRIER	

 EACH RESPECTIVE CONTRACTOR WILL BE RESPONSIBLE FOR MAINTAINING EROSION CONTROL ITEMS INSTALLED BY OTHERS DURING CONSTRUCTION OF THEIR RESPECTIVE PORTION OF THE PROJECT.
 - THE EROSION CONTROL DEVICES SHOWN ON THIS SHEET ARE CONSIDERED MINIMUM STANDARDS. WHENEVER SEDIMENT ENTERS THE STREETS, STORM SEWERS, DITCHES, OR PONDS, CONTRACTOR WILL INSTALL ADDITIONAL DEVICES, AS NEEDED, TO CORRECT THE PROBLEM.
 - THE EROSION CONTROL DEVICES SHOWN HEREON MUST BE IN PLACE AT ALL TIMES DURING CONSTRUCTION UNTIL SUCH TIME AS THE SITE IS REESTABLISHED WITH PAVING OR GRASS. TEMPORARY OR PERMANENT SEEDING AND MULCH WILL BE INSTALLED WHEN EARTHWORK ACTIVITIES CEASE IN AN AREA FOR 14 DAYS OR MORE.
 - ANY MUD INADVERTENTLY TRACKED ONTO ANY STREET SHALL BE CLEANED UP BY THE CONTRACTOR, AT THE END OF EACH DAY'S WORK, OR AS DIRECTED BY THE FIELD ENGINEER.
 - CONTRACTOR TO FURNISH A TRUCK WASH-OUT PIT TO BE PLACED AT A CONVENIENT LOCATION THAT DOES NOT CONFLICT WITH CONSTRUCTION. CONTRACTOR SHALL CLEAN OUT AND BACKFILL PIT PRIOR TO FINAL INSPECTION. LOCATION SHALL BE APPROVED BY THE FIELD ENGINEER.

No.	Revision	By	Date
	FONTANA 4TH ADDITION-PHASE 2 STORM WATER DRAIN NO. 283		
EROSION CONTROL PLAN			
JAMES L. ARMOUR, P.E. - CITY ENGINEER CITY OF WICHITA PROJ. NO. 468-84122 Professional Engineering Consultants, P.A. 303 S. TOPKA • WICHITA, KANSAS 67202 316-262-2691 • FAX 316-262-3003			
	Designed by BMM	Job No. 35-08389-004	Sheet 16 of 28
	Drawn by BJS	Date September 2009	