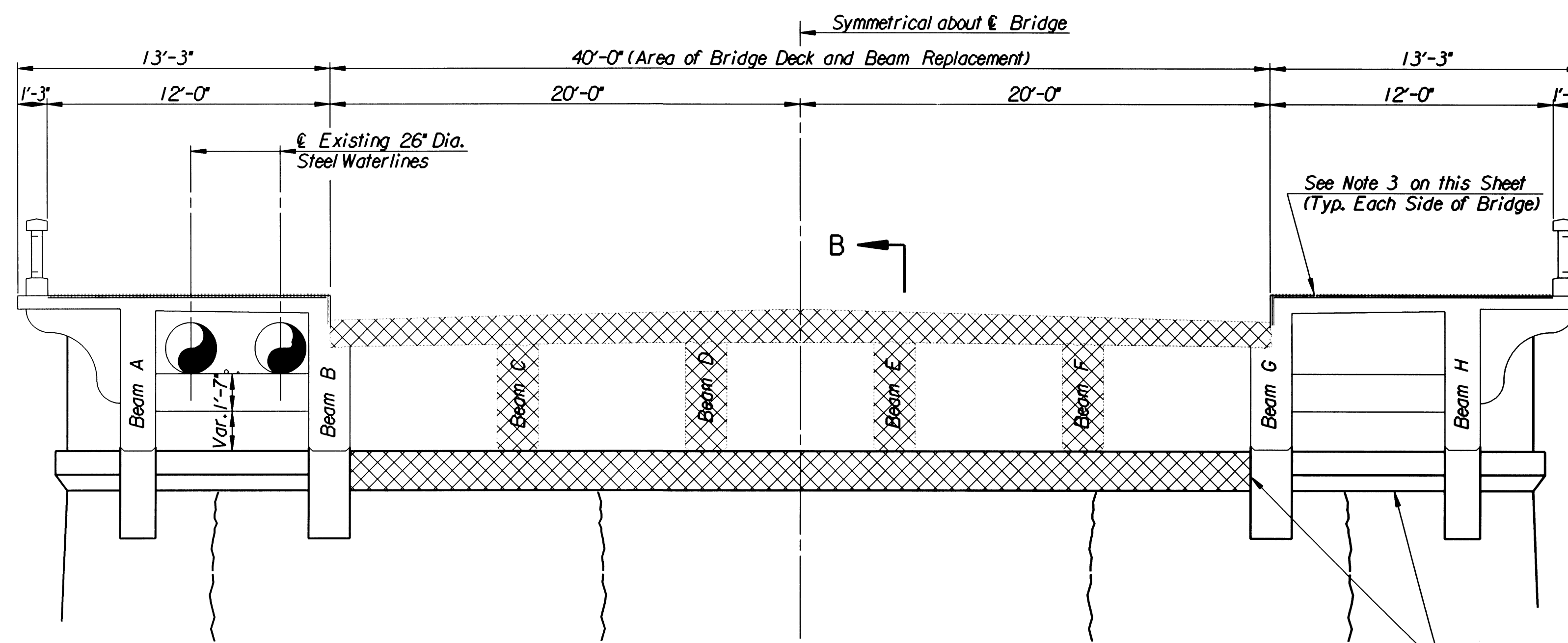
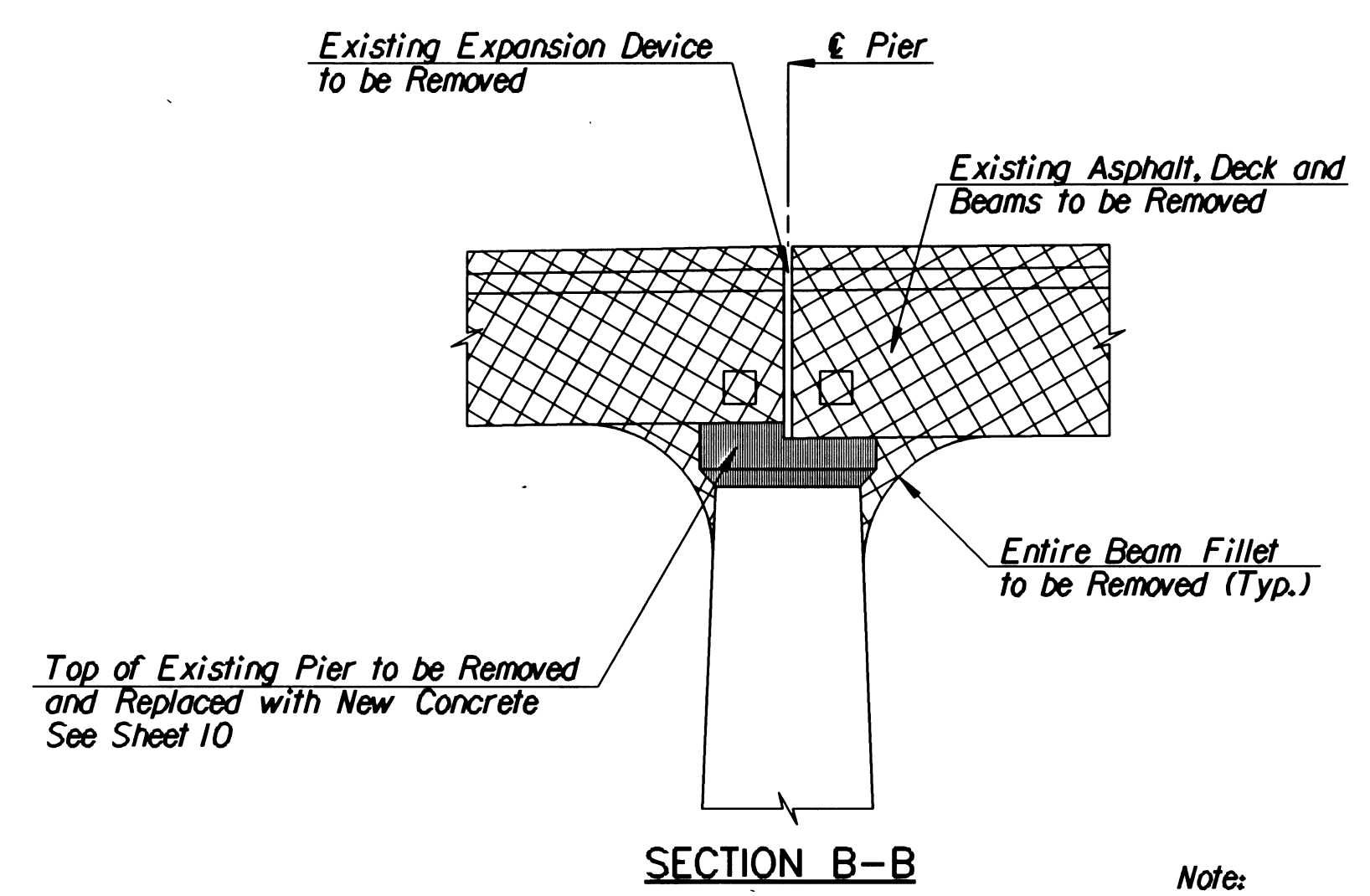


HALF SECTION NEAR PIER HALF SECTION NEAR MIDSPAN
TYPICAL DECK SECTION



TYPICAL SECTION NEAR PIER



- Note:**
1. All existing exposed reinforcing steel in the beams shall be cleaned and field epoxy coated.
 2. See Sheet No. 22 for Concrete Repair Procedures.
 3. Remove 1/2" of Sidewalk Surface and replace with 1/2" Fibermesh Concrete. Integral color to Match Existing Bridge Rail.

- Legend**
- Concrete Area to be Reconstructed or Removed
 - Cracks to be Pressure Grouted See Sheet No. 22.

No.	Revisions	By	Date
CITY OF WICHITA, KANSAS MICHAEL E. LINDEBAK, P.E.-CITY ENGINEER MURDOCK BRIDGE OVER LITTLE ARKANSAS RIVER PIER REMOVAL DETAILS CITY OF WICHITA PROJECT NO. 472-82785 PROFESSIONAL ENGINEERING CONSULTANTS, P.A. ENGINEERS WICHITA, KANSAS			
Designed by	R.W.A.	Checked by	R.A.S.
Drawn by	W.L.L.	Date	Oct. 1998 Job No. 96940

I:/1996/96940/removal.dgn
 drawn by: wil
 plotted by: ras 12-29-98