

STATE	PROJECT NO.	YEAR	SHEET NO.	TOTAL SHEETS
KANSAS	87 N-0357-01	2008	1	185

INDEX OF SHEETS

SHEET NO	DESCRIPTION
1	TITLE SHEET
2	GENERAL NOTES
3-7	TYPICAL SECTIONS
8-35	PLAN & PROFILE SHEETS
36-40	PAVING BUBBLE MAPS
41-45	STORM SEWER BUBBLE MAPS
46-57	PAVING DETAILS
58-70	INLET AND MANHOLE DETAILS
71	STORM SEWER OUTFALL DETAILS
72	RETAINING WALL DETAILS
73	MISCELLANEOUS DETAILS
74-81	RCB WIDENING DETAILS
82-96	WATER IMPROVEMENT PLANS
97-101	WATER BUBBLE MAPS
102-103	SANITARY SEWER IMPROVEMENT PLANS
104-105	SUMMARY OF QUANTITIES
106-112	BMP
113-116	ROADSIDE IMPROVEMENT PLANS
117-123	SIGNAL PLANS & DETAILS
124-131	PAVEMENT MARKING & SIGNING
132	CONSTRUCTION SEQUENCING
133-145	TRAFFIC CONTROL PLANS
146	DRAINAGE MAP
147-185	CROSS SECTIONS

STATE OF KANSAS
DEPARTMENT OF TRANSPORTATION



PLAN AND PROFILE OF PROPOSED
OLIVER STREET FROM HARRY TO KELLOGG

FEDERAL AID PROJECT

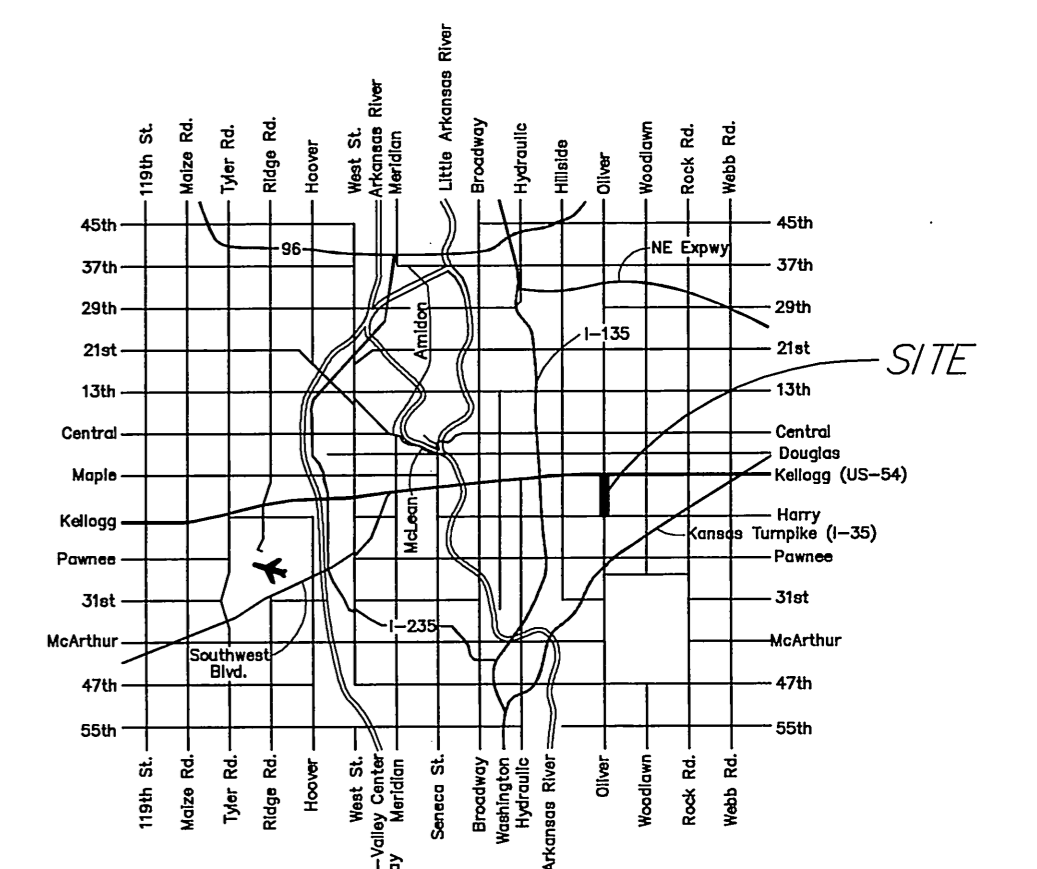
WICHITA, SEDGWICK COUNTY, KANSAS
POPULATION = 335,562

CITY OF WICHITA PAVING PROJECT NO. 472-84749 (OCA#706993)
CITY OF WICHITA SANITARY SEWER PROJECT NO. 468-84538 (OCA#620520)
CITY OF WICHITA WATER PROJECT NO. 448-90086 (OCA#636207)

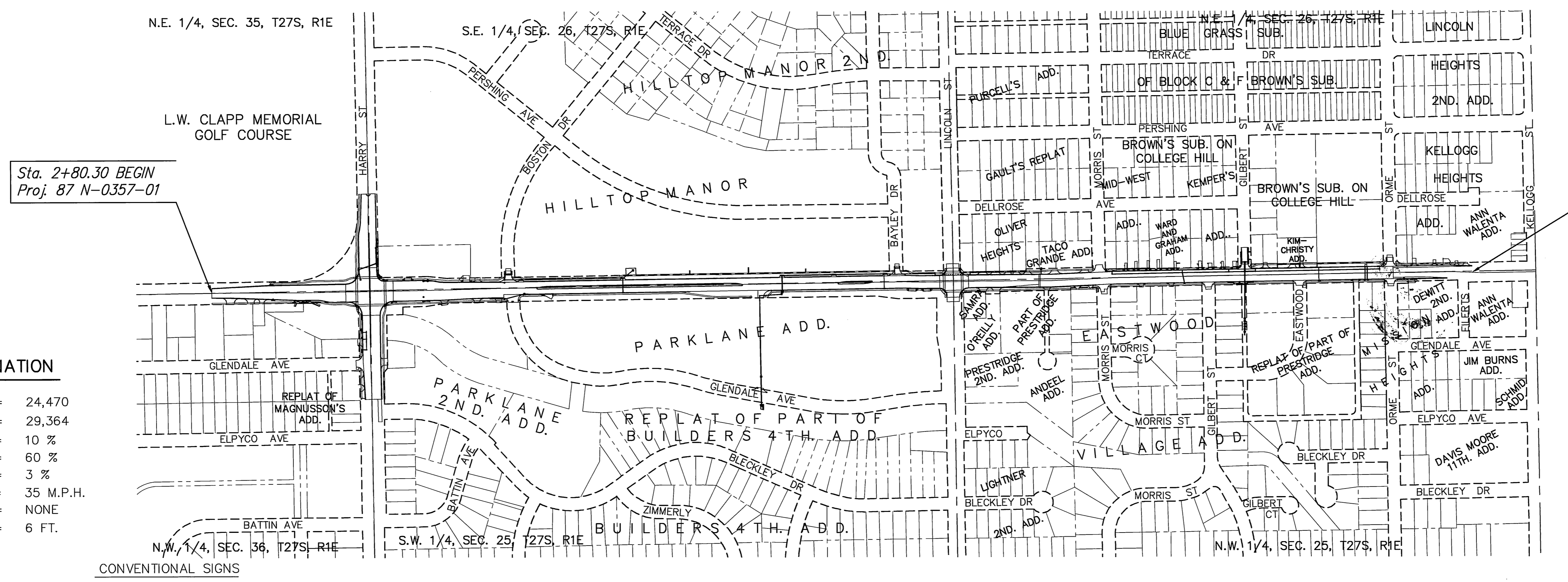
DONDLINGER - CONTRACTOR
G. GLASER - CITY OF WICHITA, FIELD PROJECT ENGINEER
J. SMITH - CITY OF WICHITA, INSPECTOR
AS-BUILT
RELEASED DATE:
PDF: APROSAS 12/3/2010

KDOT PROJ. NO. 87 N-0357-01
F.A. NO. STP N035 (701)
GRADING
SURFACING
STORM SEWER
SIGNALIZATION
PAVEMENT MARKING
SEEDING

DATE	3-15-04
BY	Marc/Justin MKEC
SURVEYED	DFG
CAD TECHNICIAN	JRA
DESIGNERS	KDOT
SQUAD	



SCALE: 1"=300'



DESIGN DESIGNATION

AADT (2002)	=	24,470
AADT (2030)	=	29,364
DHV	=	10 %
D	=	60 %
T	=	3 %
V	=	35 M.P.H.
Control of Access	=	NONE
Clear Zone	=	6 FT.

Sta. 60+08.64 END
Proj. 87 N-0357-01

Sta. 2+80.30 BEGIN
Proj. 87 N-0357-01



NOTE:
TWO WAY TRAFFIC TO BE CARRIED THROUGH CONSTRUCTION. LOCAL TRAFFIC WILL BE PERMITTED TO ADJACENT PROPERTIES.

PREPARED & SUBMITTED BY
MKEC ENGINEERING CONSULTANTS, INC.
WICHITA, KANSAS

COUNTY LINE	---
CITY LIMITS	////
STATE OR NATIONAL LINE	----
TOWNSHIP, SECTION or GRANT LINE	----
PROPERTY LINE	---
HIGHWAY FENCE	----
EXISTING FENCE	----
GUARD FENCE	----
CONSTRUCTION LIMITS	----
RIGHT OF WAY LINE	----
TRAVELED WAY	----
RAILROADS	----

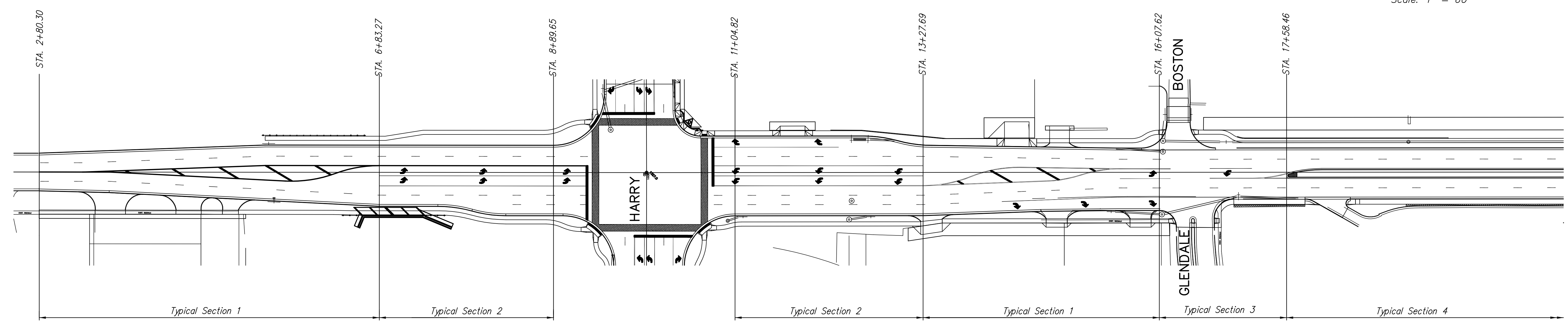
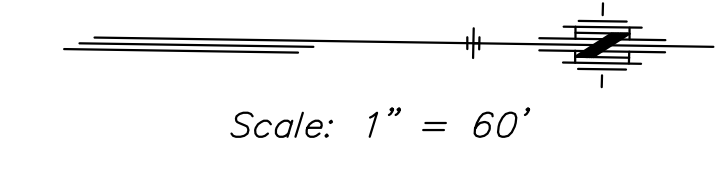
CENTER LINE OF PROJECT	50 1+00
TERRACE	----
CULVERTS	----
DROP INLET & STORM SEWER	----
ACCESS CONTROL	----
POWER POLE	----
TELEPHONE POLE	----
MARSH	----
HEDGE	----
TREES	----
PROFILE ELEVATION	----
STREAM or CREEK	----

GROSS LENGTH OF PROJECT	3,052.49 FT.
EXCEPTIONS	0.00 FT.
ADDITIONS	0.00 FT.
NET LENGTH OF PROJECT	3,052.49 FT.
NET LENGTH OF BRIDGES	0.00 FT.
NET LENGTH OF ROAD	3,052.49 FT.

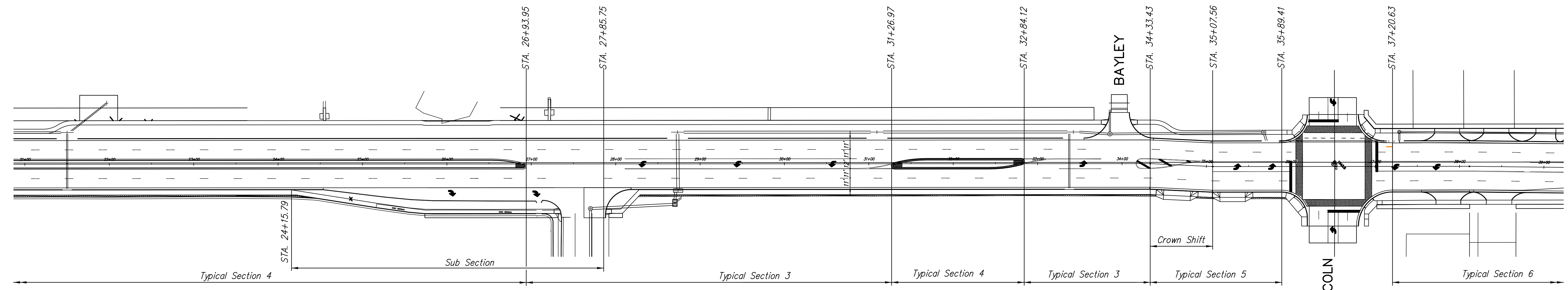
APPROVED - DATE
SEPT 12, 2008
Jim Armour
JIM ARMOUR, P.E.
CITY ENGINEER
PROJECT NO. 87 N-0307-01

RECOM. FOR APPROVAL-DATE	
CHIEF, BUREAU OF LOCAL PROJECTS KANSAS DEPARTMENT OF TRANSPORTATION	
APPROVED - DATE	
STATE TRANSPORTATION ENGINEER KANSAS DEPARTMENT OF TRANSPORTATION	

STATE	PROJECT NO.	YEAR	SHEET NO.	TOTAL SHEETS
KANSAS	87 N-0357-01	2008	3	185



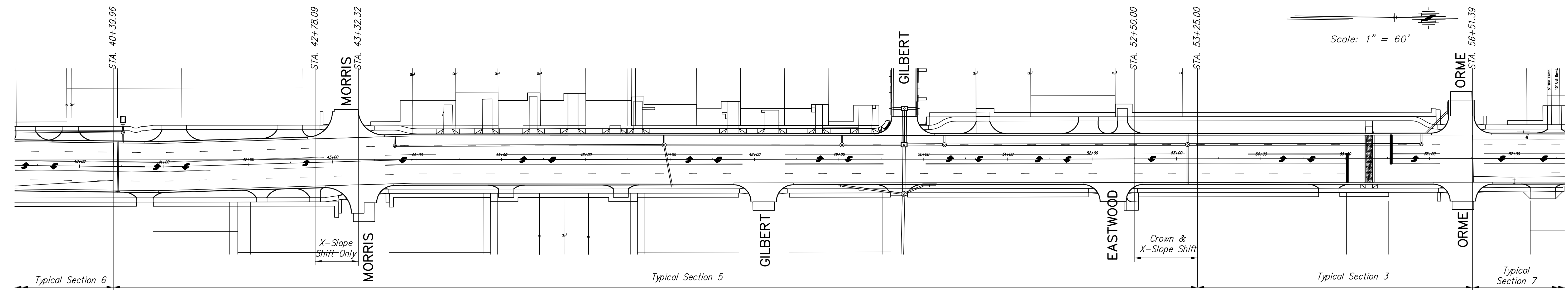
OLIVER - STA. 2+49.96 TO STA. 20+86.61



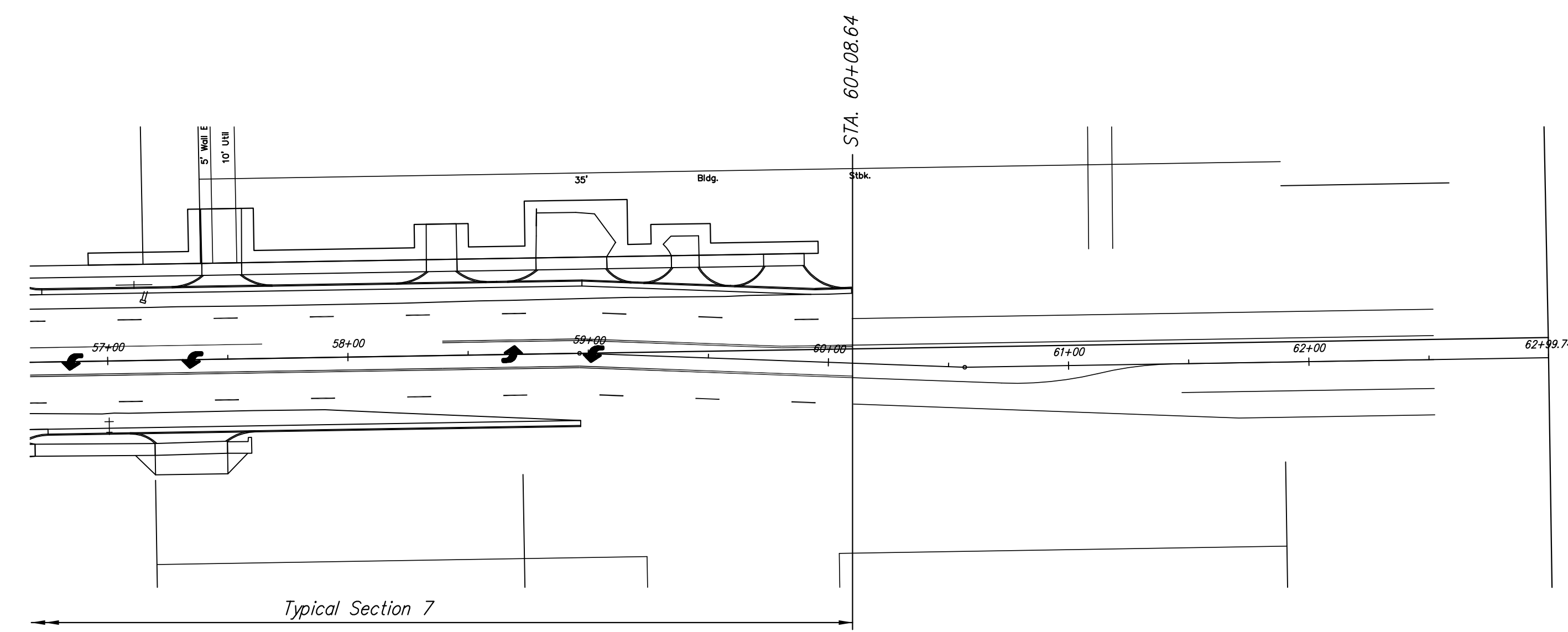
OLIVER - STA. 20+86.61 TO STA. 39+23.30

KANSAS DEPARTMENT OF TRANSPORTATION			
OLIVER IMPROVEMENTS TYPICAL SECTION KEY MAP			
PROJECT NO. 87 N-0357-01		SEDGWICK CO.	
M K E C ENGINEERING CONSULTANTS, INC. WICHITA, KANSAS			
DESIGNED BY: LAC	CHECKED BY: JRA		
DRAWN BY: WNJ	DATE: 4/01/05	SHEET 3 OF 185	

STATE	PROJECT NO.	YEAR	SHEET NO.	TOTAL SHEETS
KANSAS	87 N-0357-01	2008	4	185



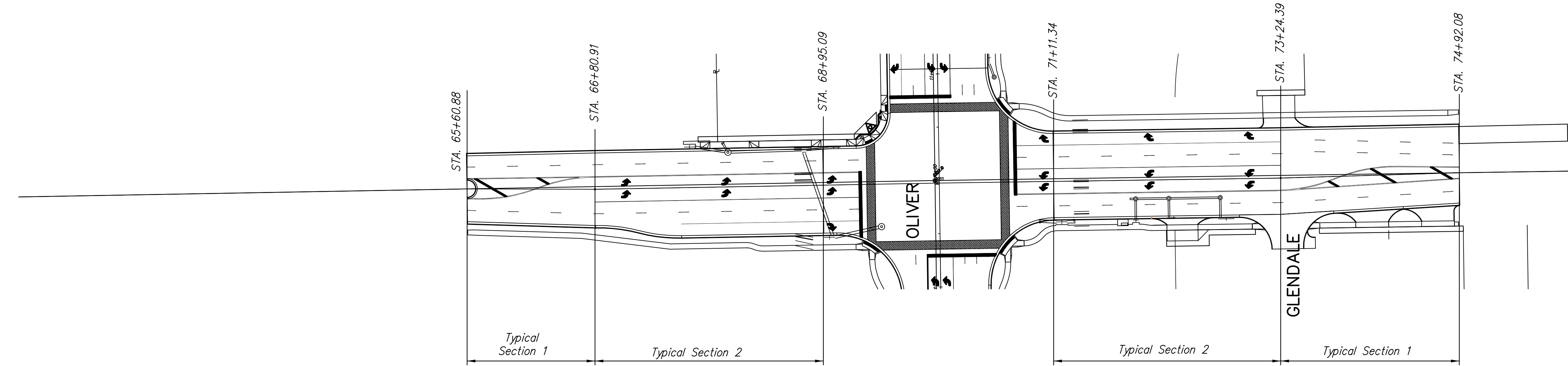
OLIVER - STA. 39+23.30 TO STA. 57+60.02



OLIVER - STA. 57+60.02 TO Sta. 62+99.74

Station	Distance Off BL	Side	Notes
2+80.30	0.00'	-	Oliver
6+83.27	4.00'	Lt.	
13+27.69	4.00'	Lt.	
15+57.70	1.50'	Lt.	
34+33.43	1.50'	Lt.	
35+07.56	5.00'	Lt.	
38+11.70	5.00'	Lt.	
40+93.82	8.46'	Lt.	
43+93.94	0.00'	-	
58+96.37	0.00'	-	
60+56.77	8.42'	Lt.	
65+60.88	0.00'	-	Harry
66+80.91	2.50'	Lt.	
73+24.39	2.50'	Lt.	
74+92.08	0.00'	-	

SECTION LINE VARIANCE TABLE



HARRY - STA. 61+41.80 TO STA. 79+78.44

KANSAS DEPARTMENT OF TRANSPORTATION

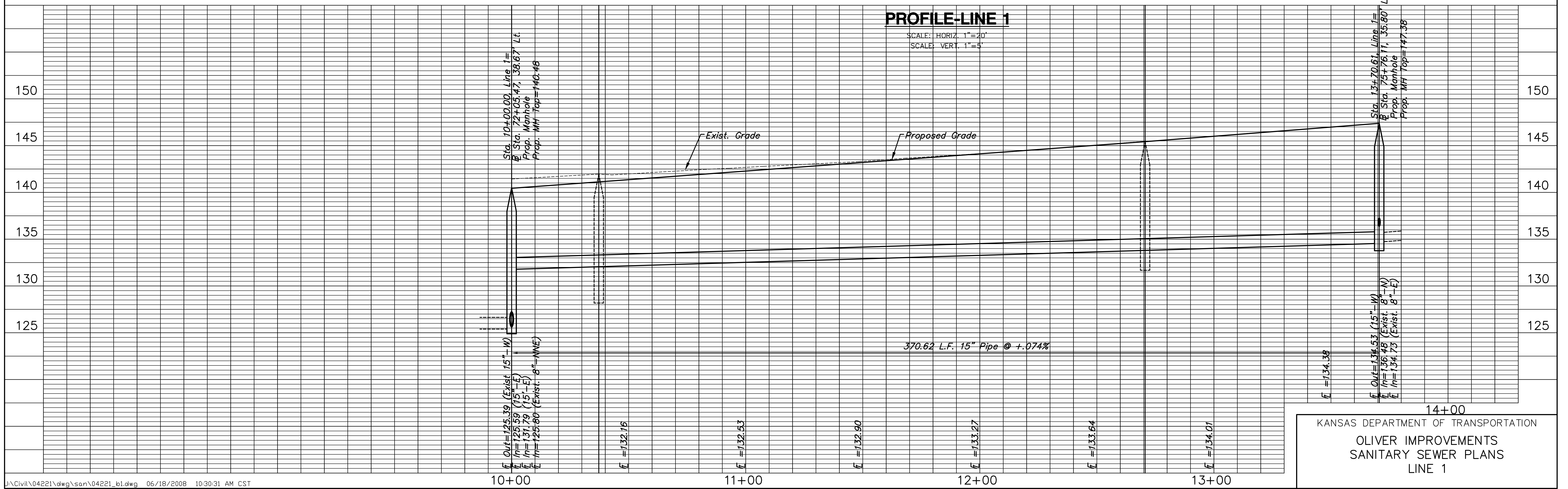
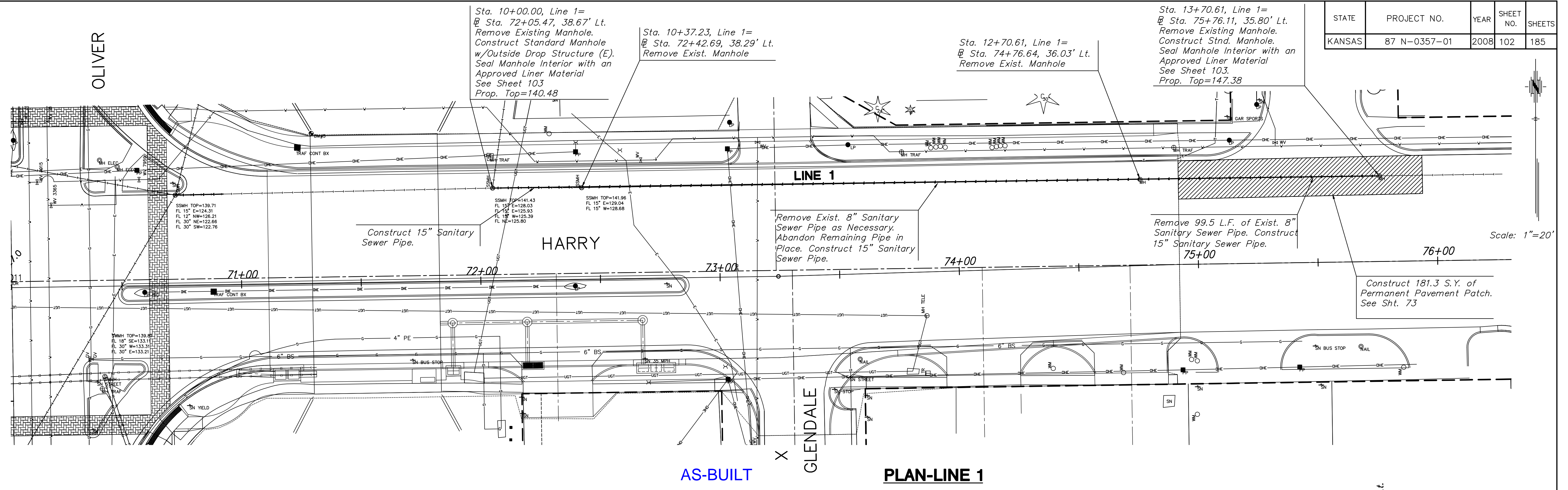
**OLIVER IMPROVEMENTS
TYPICAL SECTION KEY MAP**

PROJECT NO. 87 N-0357-01 SEDGWICK CO.

M K E C ENGINEERING CONSULTANTS, INC.
WICHITA, KANSAS

DESIGNED BY: LAC	CHECKED BY: JRA
DRAWN BY: WNJ	DATE: 4/01/05 SHEET 4 OF 185

STATE	PROJECT NO.	YEAR	SHEET NO.	SHEETS
KANSAS	87 N-0357-01	2008	102	185



KANSAS DEPARTMENT OF TRANSPORTATION
 OLIVER IMPROVEMENTS
 SANITARY SEWER PLANS
 LINE 1

General Notes:

These notes apply to the work being done to or adjacent to all Existing Sanitary Sewer Manholes on the project.

Waterstop Gaskets shall be used with P.V.C. and A.B.S. Composite Pipe. The new pipe shall be grouted into the opening using an approved nonshrink grout for the full Manhole Wall thickness. The Exterior of the Completed connection shall be Sealed with an approved Bituminous Coating such that the connection will be water tight.

Contractor to confirm elevations of inverts prior to construction.

Contractor shall Replace loose and missing cement mortar on all exposed surfaces of the Existing Manhole, if necessary.

Touch-up Sealing shall be performed around the Pipe Opening, inside the Manhole with an Approved Manhole Lining Material.

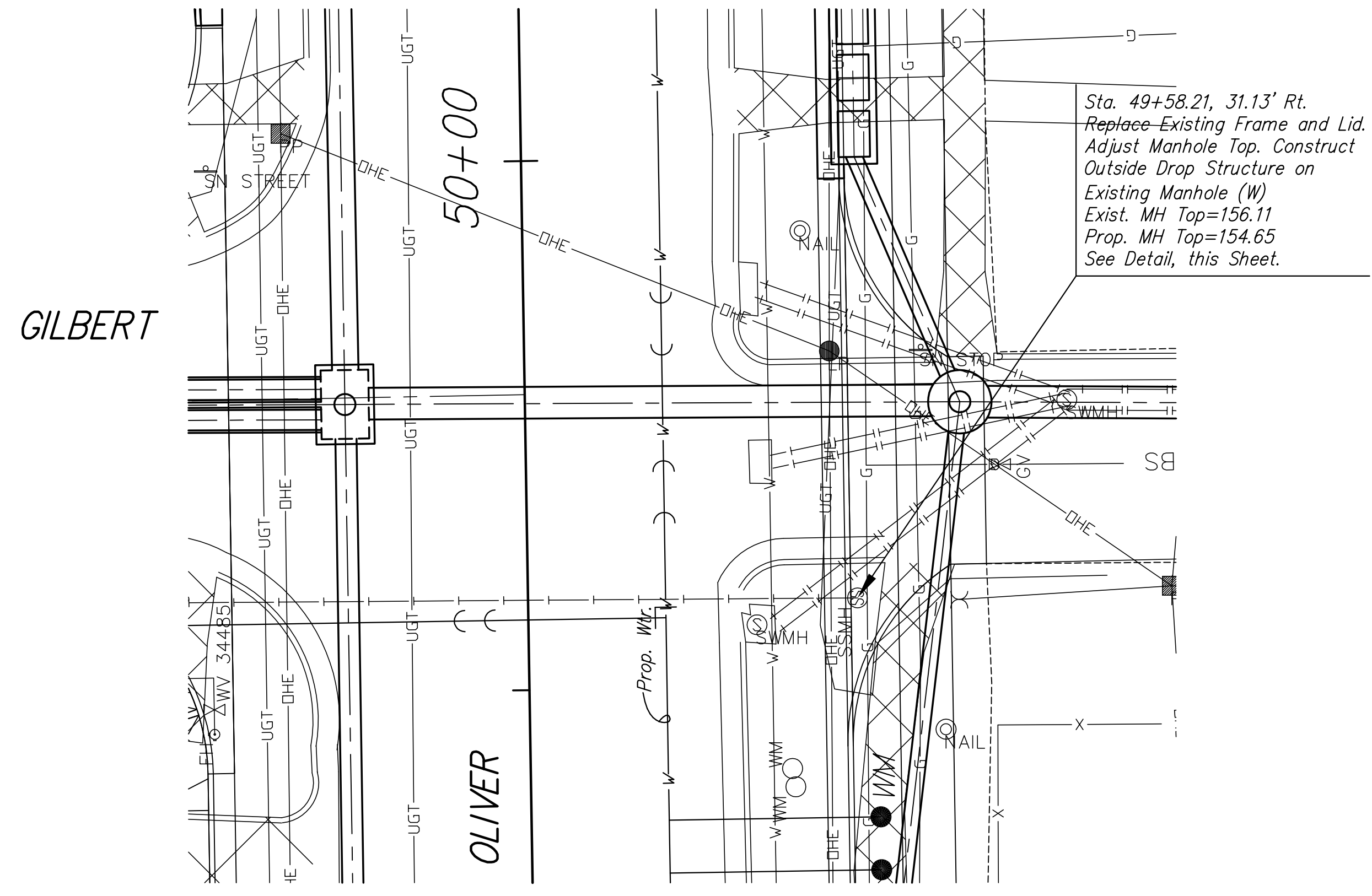
Approved Manhole Liner Materials are as follows:

- Raven 405 High Build Epoxy
- Sauereisen 210S
- Warren S-301 Epoxy
- Zebtron

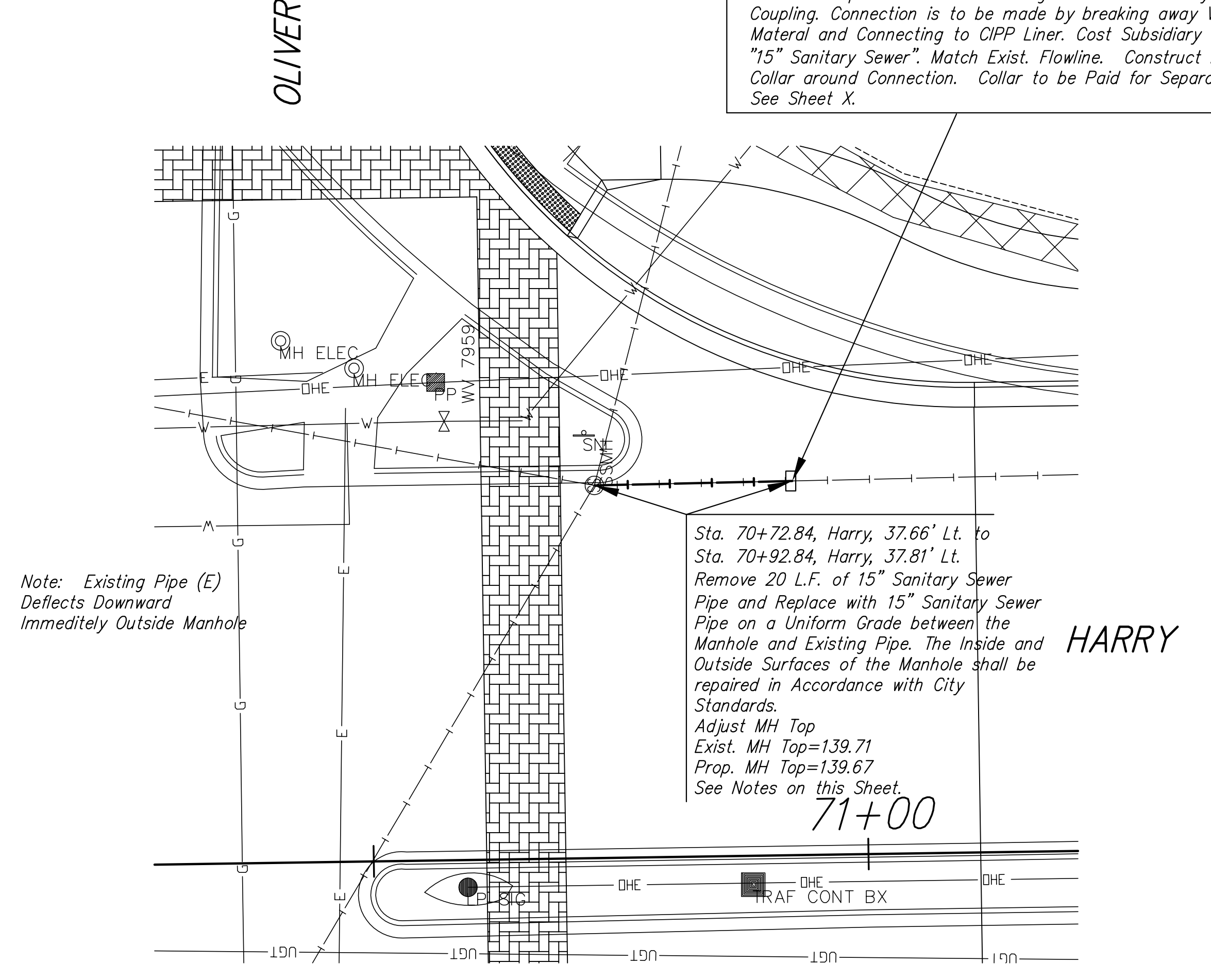
Products Shall be applied at a Minimum Thickness of 90 mils or the minimum thickness required by the manufacturer, whichever is thicker.

STATE	PROJECT NO.	YEAR	SHEET NO.	TOTAL SHEETS
KANSAS	87 N-0357-01	2008	103	185

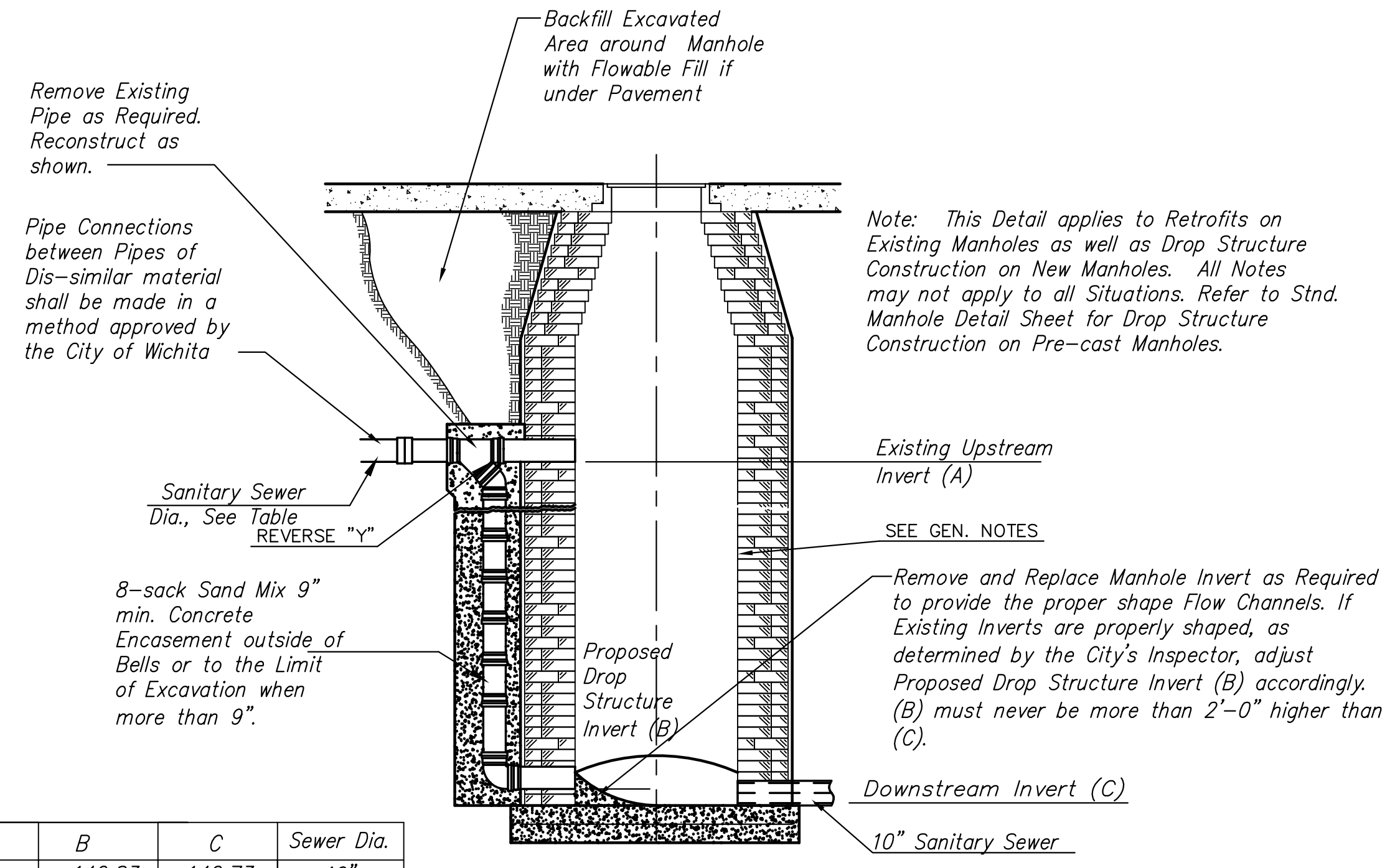
Sta. 10+20.00, Line 2=Sta. 70+92.84, 37.81' Lt. Connect Proposed Sewer to Existing with a Dresser Style Coupling. Connection is to be made by breaking away VCP Material and Connecting to CIPP Liner. Cost Subsidiary to "15" Sanitary Sewer". Match Exist. Flowline. Construct Pipe Collar around Connection. Collar to be Paid for Separately. See Sheet X.



DROP STRUCTURE PLAN

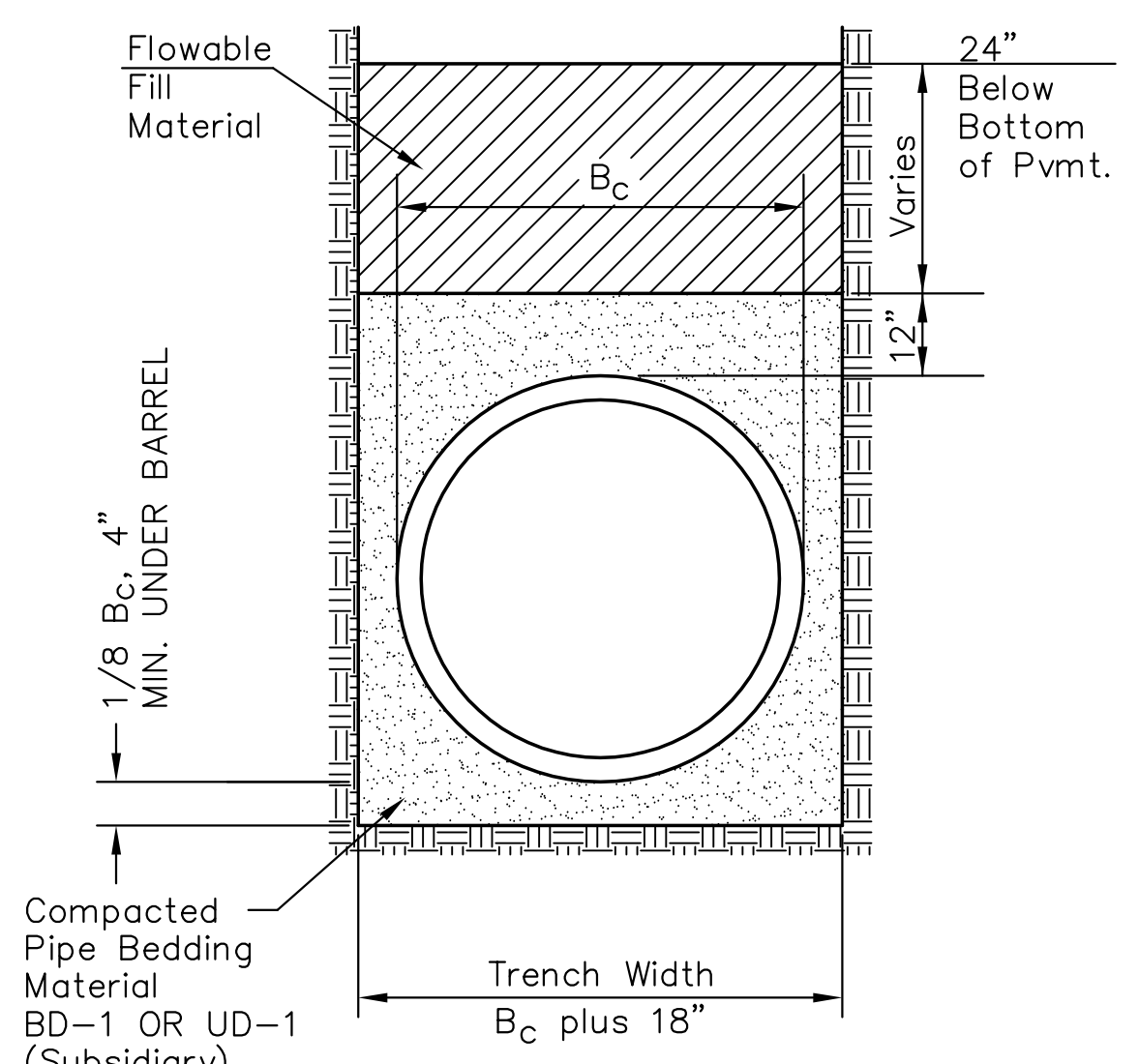


POINT REPAIR PLAN



MANHOLE	A	B	C	Sewer Dia.
49+58.21	147.39	142.83	142.73	10"
10+00, Line 1	131.79	125.59	125.39	15"

DETAIL OF OUTSIDE DROP CONSTRUCTED ON MANHOLE



FLOWABLE FILL DETAIL
(For Sanitary Sewer Pipe)

J:\Civil\04221\dwg\details\04221san-dt11.dwg 10/24/2007 02:23:22 AM CST

KANSAS DEPARTMENT OF TRANSPORTATION

OLIVER IMPROVEMENTS
SANITARY SEWER MISCELLANEOUS
DETAILS

PROJECT NO. 87 N-0357-01 SEDGWICK CO.

M K E C ENGINEERING CONSULTANTS, INC.
WICHITA, KANSAS

DESIGNED BY: LAC	CHECKED BY: JRA
DRAWN BY: WNJ	DATE: 4/07/05 SHEET 103 OF 185