

PRIVATE SANITARY AND STORM SEWER IMPROVEMENTS FAIRFIELD INN & SUITES LOT 1, BLOCK 5, WATERWALK PHASE 2 ADDITION PRIVATE PROJECT NO. 2044 PPS (607861)

Stub
Release Date: 1/3/2011
:APRosas 1/3/2011

INDEX OF SHEETS

- (QTY SUBMITAL INDEX)
1. TITLE SHEET
 2. SANITARY SEWER PLAN & PROFILE
 3. STORM SEWER PLAN & PROFILE
 4. TYPE P MANHOLE DETAILS

BENCHMARKS

B.M.: CHISELED SQUARE ON THE TOP OF CURB AT THE NORTH SIDE OF DEWEY ST., 161' W. OF THE CENTERLINE OF MAIN ST., 3' S. OF A FIRE HYDRANT.
ELEVATION = 1298.55 (NAVD88)

As-built
Contractor: McCullough Exc.
Inspector: Larry Gann/KE Miller Engineering
pdf by: LG,12-2010

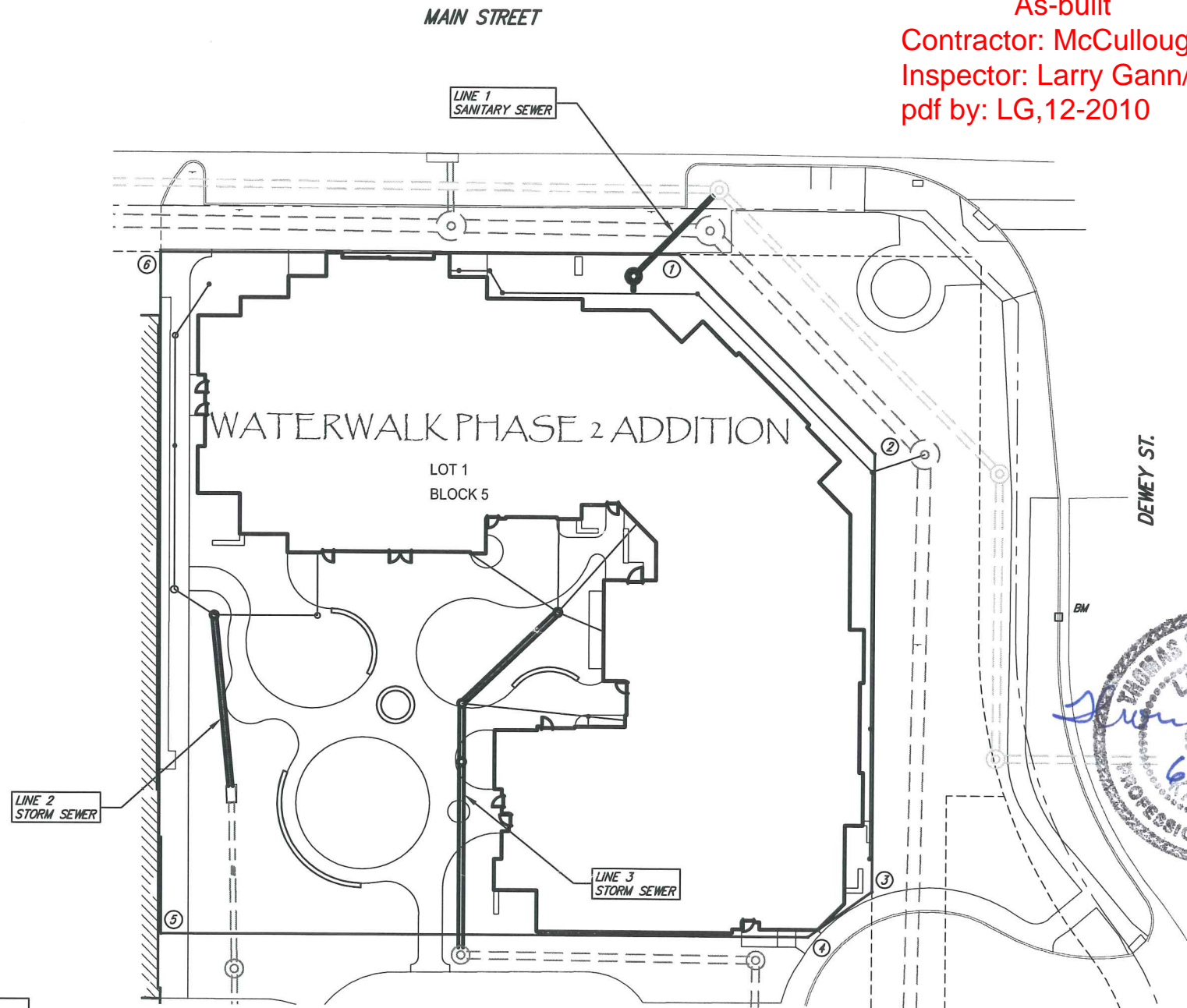
GENERAL NOTES

1. Contractor will be required to provide a minimum notice of 72 hours to utility companies prior to starting any excavation as follows:

Kansas One-Call	687-2470
-----------------	----------

The Contractor must notify the following in case of an emergency:

Cox Communications	262-0661
Kansas Gas Service	383-8600
Westar Energy	383-8600
AT&T	1-800-286-8313
City of Wichita Water Utility	268-6000
Black Hills Energy	1-800-303-0357
2. Existing utilities and their location, as shown on the plans, represent the best information obtainable for design. Location information has been obtained from the various utility companies and is either from company record drawings or company-provided field locations. The Contractor will be required to work around existing utilities within the right-of-way which do not conflict with proposed construction.
3. A saw cut of the full depth of existing surface courses or pavement thickness shall be provided at locations where proposed construction abuts an existing surface course or pavement for which partial removal of that surface or pavement is required, except when such saw cuts are within three (3) feet of an existing joint the limits of removal shall be extended to the existing joint.
4. This project is limits of a larger project which will include building construction. The General Contractor for the project will submit a Storm Water Pollution Prevention Plan for the entire project prior to beginning any work on this project.
5. This project is to be constructed in accordance with City of Wichita Standard Specifications for the Construction of City Projects and Policy on Construction of Infrastructure by Private Contract.
6. No work shall begin on this project before required bonds are submitted to the City of Wichita, and the project inspector has been notified.
7. All areas of public R/W disturbed by construction of this project are to be restored in accordance with Administrative Regulation AR 6.5 of the City of Wichita.
8. Two-way traffic on Dewey St. shall be maintained at all times.

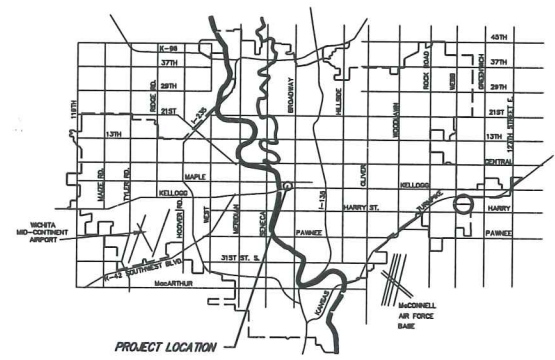
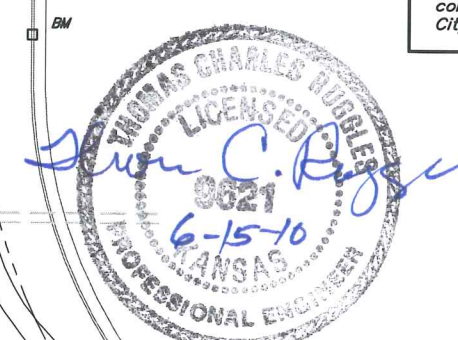


APPROVED AS NOTED
BY CITY ENGINEER OF WICHITA

Sanitary Sewers *Julianne Kallman 6-16-10*
Storm Sewers *Julianne Kallman 6-16-10*
Driveway Approaches _____
Water Mains _____
Paving _____

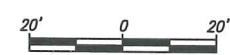
NOTE TO CONTRACTORS

Inspection and testing for this project are to be provided by a Licensed Consulting Engineering Firm under contract with the Owner/Developer. Said Inspection to be in accordance with the City of Wichita standard construction engineering practices and certified by a Licensed Professional Engineer. No work shall be performed in dedicated easements or public right-of-way by the Contractor without such inspection, nor shall any work be commenced without written authorization by the City Engineer.



COORDINATE CONTROL TABLE				
CONTROL NO.	LOCATION	DESCRIPTION	NORTHING	EASTING
①	SE CORNER OF LOT 1, BLOCK 5, WATERWALK PHASE 2 ADD.	(1/2" R&B)	20067.37	19987.50
②	S LINE OF LOT 1, BLOCK 5, WATERWALK PHASE 2 ADD.	(1/2" R&B)	20013.45	19933.58
③	S LINE OF LOT 1, BLOCK 5, WATERWALK PHASE 2 ADD.	(1/2" R&B)	20013.45	19814.32
④	SW CORNER OF LOT 1, BLOCK 5, WATERWALK PHASE 2 ADD.	(1/2" R&B)	20030.97	19801.90
⑤	NW CORNER OF LOT 1, BLOCK 5, WATERWALK PHASE 2 ADD.	(1/2" R&B)	20207.37	19801.89
⑥	NE CORNER OF LOT 1, BLOCK 5, WATERWALK PHASE 2 ADD.	(1/2" R&B)	20207.88	19987.49

CITY OF WICHITA, KANSAS
JAMES L. ARMOUR, P.E., CITY ENGINEER



Ruggles & Bohm, P.A.
Engineering, Surveying, Land Planning
924 North Main
Wichita, Kansas 67203
www.rbkansas.com
(316) 264-8098
(316) 264-4821 fax
E-mail: info@rbkansas.com