

**DRAIN BASIN/ INLINE DRAIN  
TYPICAL DETAIL**

**STORM DRAIN NOTES:**

1. STORM DRAIN PIPE (EXCEPT WHERE SPECIFIC MATERIAL IS INDICATED) TO BE EITHER REINFORCED CONCRETE PIPE AS SPECIFIED BELOW, CLOSED PROFILE PVC PIPE MEETING ASTM D-1784 (FOR SIZES 21"-48"), OR SDR 35 PVC PIPE MEETING ASTM F-679 OR D-3034 (FOR SIZES 8"-18").
2. REINFORCED CONCRETE PIPE SHALL BE CLASS III, MEETING REQUIREMENTS OF ASTM C-76 FOR WALL B.
3. SDR 35 PVC PIPE SHALL BE INSTALLED IN ACCORDANCE WITH ASTM D-2321.
4. DRAIN BASINS TO BE PREFABRICATED PVC BASINS WITH SLOTTED CAST IRON GRATES (AS MFGD. BY ADS, INC. OR APPROVED EQUAL).
5. CONNECTION OF DISSIMILAR PIPE MATERIALS SHALL BE MADE WITH ADAPTERS MADE FOR THAT PURPOSE.
6. PRECAST CONCRETE INLETS MAY BE USED AT CONTRACTORS OPTION WITH ENGINEER'S APPROVAL OF SHOP DRAWINGS.

STA. 0+00 LINE 2  
CONNECT TO EXISTING INLET  
TOP ELEV = 1297.53  
N 20188.06 E 19839.89

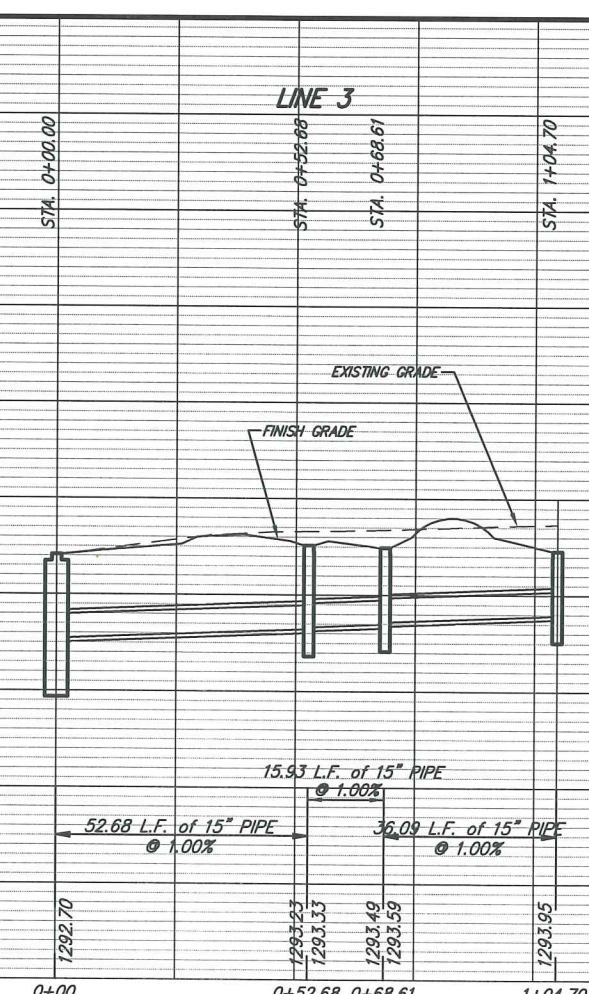
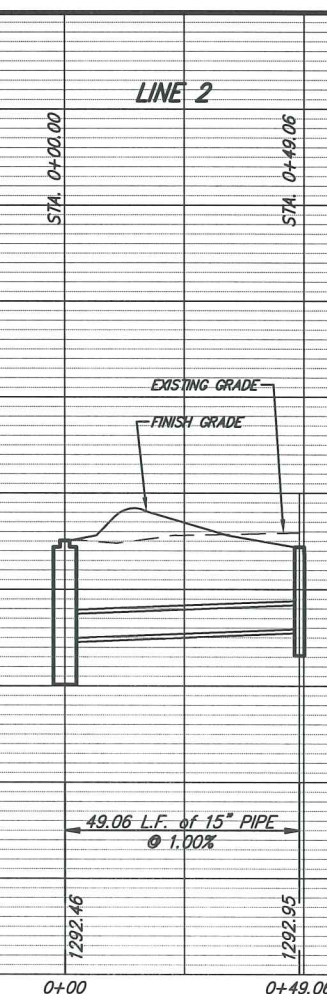
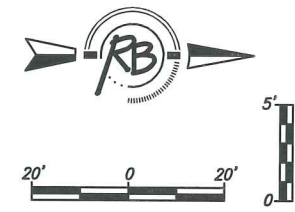
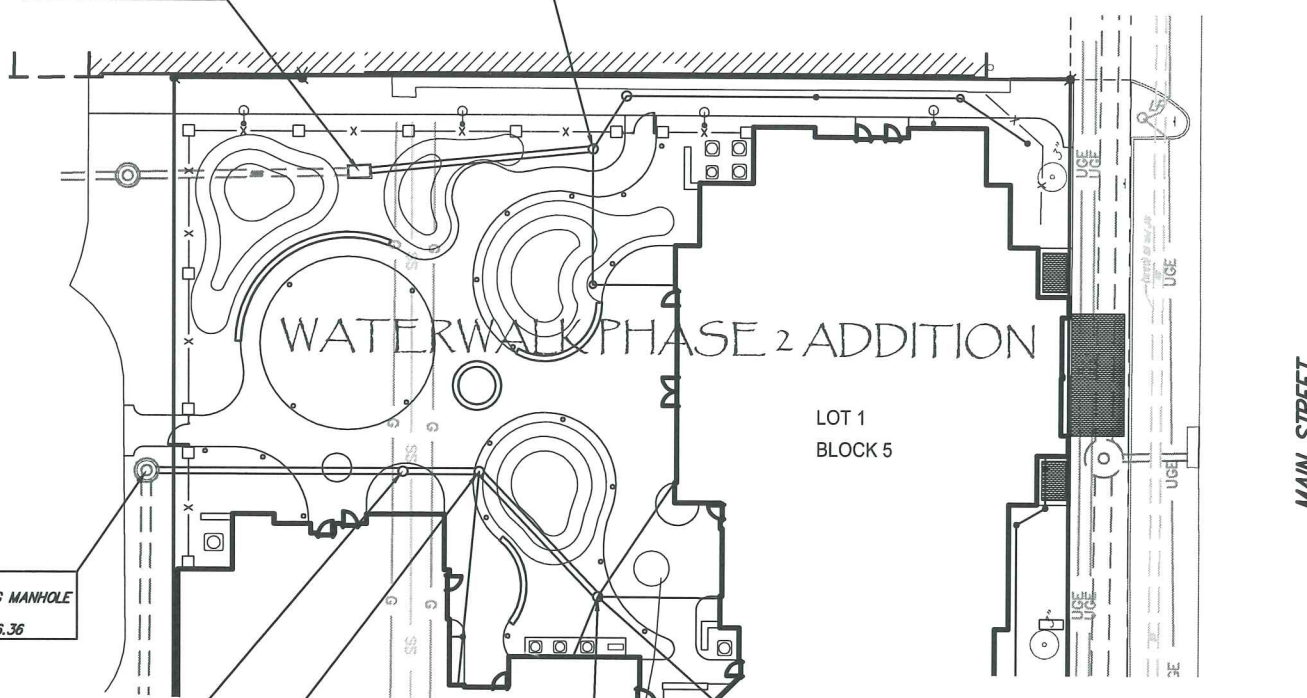
STA. 0+49.06 LINE 2  
CONSTRUCT 24" DRAIN BASIN  
TOP ELEV = 1297.20  
2 - 10" STUBS (S & NE) FL = 1293.40  
N 20192.87 E 19888.72

STA. 0+00 LINE 3  
CONNECT TO EXISTING MANHOLE  
TOP ELEV = 1297.06  
N 20125.86 E 19796.36

STA. 0+52.68 LINE 3  
CONSTRUCT 24" DRAIN BASIN  
TOP ELEV = 1297.57  
N 20125.86 E 19849.03

STA. 0+68.61 LINE 3  
CONSTRUCT 24" DRAIN BASIN  
TOP ELEV = 1297.45  
6" STUB (S) FL = 1294.34  
N 20125.86 E 19864.96

STA. 1+04.70 LINE 3  
CONSTRUCT 24" DRAIN BASIN  
TOP ELEV = 1297.29  
4 - 6" STUBS (SW, SE, E & NE) FL = 1294.70  
N 20099.83 E 19889.96



RB  
 Ruggles & Boehm, P.A.  
 Engineering, Surveying, Land Planning  
 524 North Main  
 Wichita, Kansas 67202  
 (316) 264-8000  
 www.rbg.com  
 Email: info@rbg.com

DESIGN: TRC  
 DRAWN: MLP  
 PROJECT NUMBER: 2044 PPS  
 FAIRFIELD INN & SUITES  
 STORM SEWER PLAN - PROFILE  
 WICHITA, KANSAS  
 PROJECT FILE  
 DRAWING FILE  
 ENG. BASE [SS P&P]

REVISED  
 DATE  
 REVIEW  
 Mar. 29, 2010

RB JOB  
 3596E  
 SHEET  
 3  
 OF  
 4