

BM 1- "d" CHISELED ON TOP W. CURB WEBB ROAD. 470' N. OF 21ST ST. NORTH AT S. SIDE ENTRANCE CITY OF WICHITA PUMP STATION BUILDING.
ELEV.= 209.77

BM 2- "d" CHISELED ON NW CORNER CONCRETE BASE OF TRAFFIC SIGNAL POLE AT SW CORNER OF WEBB ROAD AND 21ST ST. NORTH.
ELEV.= 204.11

BM 3- "d" CHISELED ON TOP OF W. CURB WEBB ROAD. 87' S. OF THIRD WOODEN POWER POLE S. OF 21ST ST. NORTH.
ELEV.= 198.54

BM 4- "d" CHISELED ON TOP CENTER CURB INLET ON W. SIDE WEBB ROAD 65' N. OF THE @ 19TH ST. NORTH.
ELEV.= 196.46

BM 5- "d" CHISELED ON TOP CENTER CURB INLET ON W. SIDE WEBB ROAD 66' N. OF @ ENTRANCE TO EASTMINSTER PRESBYTERIAN CHURCH.
ELEV.= 193.28

BM 6- "d" CHISELED ON TOP W. CURB WEBB ROAD 16.0' S. OF @ RAIL ROAD TRACKS.
ELEV.= 194.45

BM 7- "T" POST 0.3' BELOW GRADE. 11.5' S. OF @ RAIL ROAD 700± W. OF ROCK ROAD.
ELEV.= 197.28

BM 8- "T" POST 0.3' BELOW GRADE. 6.2' N. OF @ RAIL ROAD TRACKS 1320± E. OF WEBB ROAD.
ELEV.= 198.82

BM 9- "T" POST 0.3' BELOW GRADE. 5.6' S. OF @ RAIL ROAD TRACKS 720± E. OF RAIL ROAD BRIDGE & 70' E. OF "H" STRUCTURE HLP TO N.
ELEV.= 192.93

BM 10- "d" CHISELED ON SE CORNER RAIL ROAD BRIDGE ON CONCRETE WING WALL 0.5 MILES E. OF ROCK ROAD S. SIDE OF RAIL ROAD TRACKS.
ELEV.= 186.24

BM 11- "T" POST 7.3' S. @ RAIL ROAD TRACKS. 700± W. OF RAIL ROAD BRIDGE.
ELEV.= 194.11

BM 12- "T" POST 0.3' BELOW GRADE. 4.6' N. @ RAIL ROAD TRACKS & CONTROL POINT #105. 1320± E. OF ROCK ROAD.
ELEV.= 198.73

BM 13- "T" POST 0.3' BELOW GRADE. 5.2' S. OF @ RAIL ROAD TRACKS. 750± E. ROCK ROAD ON LINE WITH CONCRETE MASON FENCE TO N.
ELEV.= 199.27

BM 14- "T" POST 0.3' BELOW GRADE. 8.0' S. OF @ RAIL ROAD TRACKS DIRECTLY S. OF SECOND "H" STRUCTURE POWER POLE W. OF ROCK ROAD 600±.
ELEV.= 204.34

BM 15- RAIL ROAD SPIKE S. FACE OF S. POLE OF THIRD "H" STRUCTURE POWER POLE W. OF ROCK ROAD ON N. SIDE RAIL ROAD TRACKS & N. OF CONTROL POINT #107
ELEV.= 210.90

BM 16- "T" POST 9.8' S. RAIL ROAD TRACKS DIRECTLY S. OF FOURTH "H" STRUCTURE POWER POLE. 600± E. OF @ GOVERNEOUR ST.
ELEV.= 211.41

BM 17- "T" POST 8.0' S. RAIL ROAD TRACKS & 21' E. OF E. LINE BACK CURB GOVERNEOUR ST. 8.0' S. OF CONTROL POINT #108
ELEV.= 206.17

BM 18- "T" POST IN @ RAIL ROAD TRACKS OVER 60" CMP. 750± W. OF GOVERNEOUR ST. AT CREEK CROSSING THE RAIL ROAD.
ELEV.= 200.76

BM 19- "T" POST 8' S. @ RAIL ROAD TRACKS. 1320± E. OF WOODLAWN. 30' W. TO LINE OF CHAINLINK FENCE TO N. E. FENCE OF ELECTRIC SUB STATION. 8' S. OF CONTROL POINT #109, A PK NAIL @ RAIL ROAD.
ELEV.= 203.02

BM 20- "T" POST 11' S. @ RAIL ROAD TRACKS & 25' E. OF WOODEN PLANTER FULL OF STRAWBERRY'S. 105' W. OF W. LINE FENCE TO N. OF ELECTRIC SUB STATION. 700± E. OF WOODLAWN.
ELEV.= 206.70

BM 21- "X" FILED ON TOP SW ANCHOR BOLT OF RAIL ROAD SIGNAL W. OF WOODLAWN & N. OF RAIL ROAD TRACKS.
ELEV.= 217.31

BM 22- "T" POST 7.5' S. @ RAIL ROAD TRACKS. S. OF SIXTH HLP W. OF WOODLAWN. 250± W. OF WOODLAWN.
ELEV.= 221.48

BM 23- "T" POST 4.0' N. @ RAIL ROAD. N. OF CONTROL POINT #111. 1320± W. OF WOODLAWN. 35' W. OF SIGNPOST "W" S. SIDE OF RAIL ROAD.
ELEV.= 221.90

BM 24- "T" POST @ RAIL ROAD TRACKS. 600± E. OF EDGEWOOD ST. WHERE RAIL ROAD DITCH TO N. IS CLEARED & MOWED BY HOME OWNER.
ELEV.= 220.90

BM 25- "T" POST 9.0' S. OF RAIL ROAD TRACKS S. OF CONTROL POINT #112 & 170' W. OF @ EDGEWOOD ST.
ELEV.= 220.82

BM 26- "T" POST @ RAIL ROAD TRACKS. 129' W. OF MILE POST #501. 900± W. OF EDGEWOOD ST.
ELEV.= 221.09

BM 27- "T" POST 4' S. @ RAIL ROAD TRACKS AT @ CONCRETE FLOODWAY FLUME AT @ PINECREST ST. 9' E. OF CONTROL POINT #113.
ELEV.= 219.67

BM 28- "T" POST @ RAIL ROAD TRACKS. 700± E. OF OLIVER ST. 28' W. OF FIFTH POWER POLE E. OF OLIVER ST. ON N. SIDE OF RAIL ROAD.
ELEV.= 220.01

BM 29- RR SPIKE S. FACE OF LIGHT POLE WITH BASKETBALL GOAL IN PARKING LOT OF CHURCH AT 4401 E. 17TH ST. NORTH.
ELEV.= 219.69

BM 30- "T" POST @ RAIL ROAD TRACKS. 500' E. OF SHOCKER DR. & 12' W. CHAINLINK FENCE TO S. ON E. SIDE OF A BLUE HOUSE S. OF RAIL ROAD.
ELEV.= 217.92

BM 31- NW ANCHOR BOLT OF RAIL ROAD SIGNAL BASE S. OF RAIL ROAD & E. OF SHOCKER DR.
ELEV.= 215.46

BM 32- "d" CHISELED ON TOP CURB AT NW CORNER REGENTS LANE & SHOCKER DR.
ELEV.= 215.53

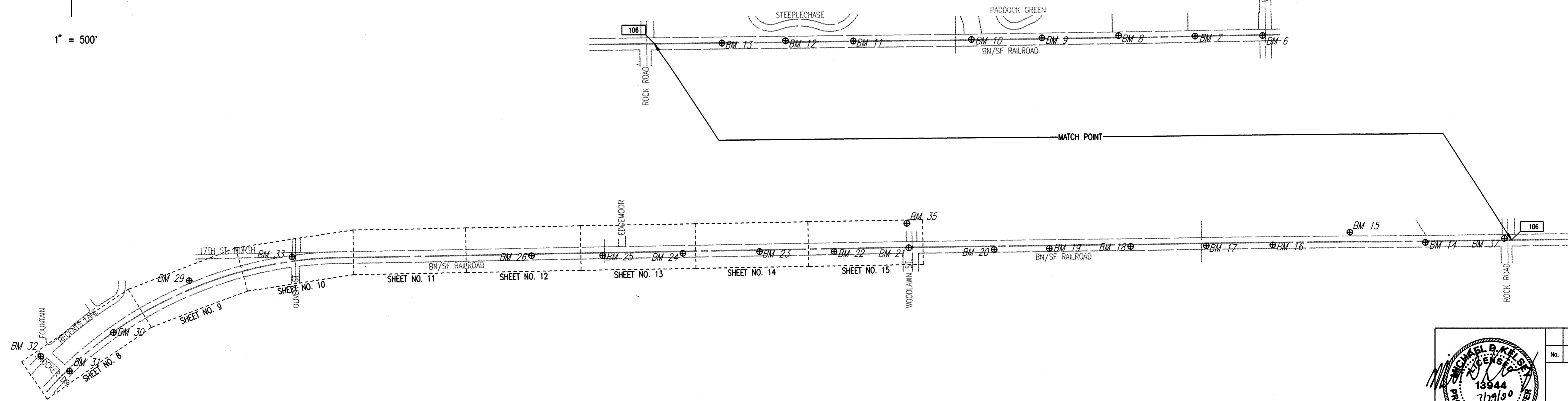
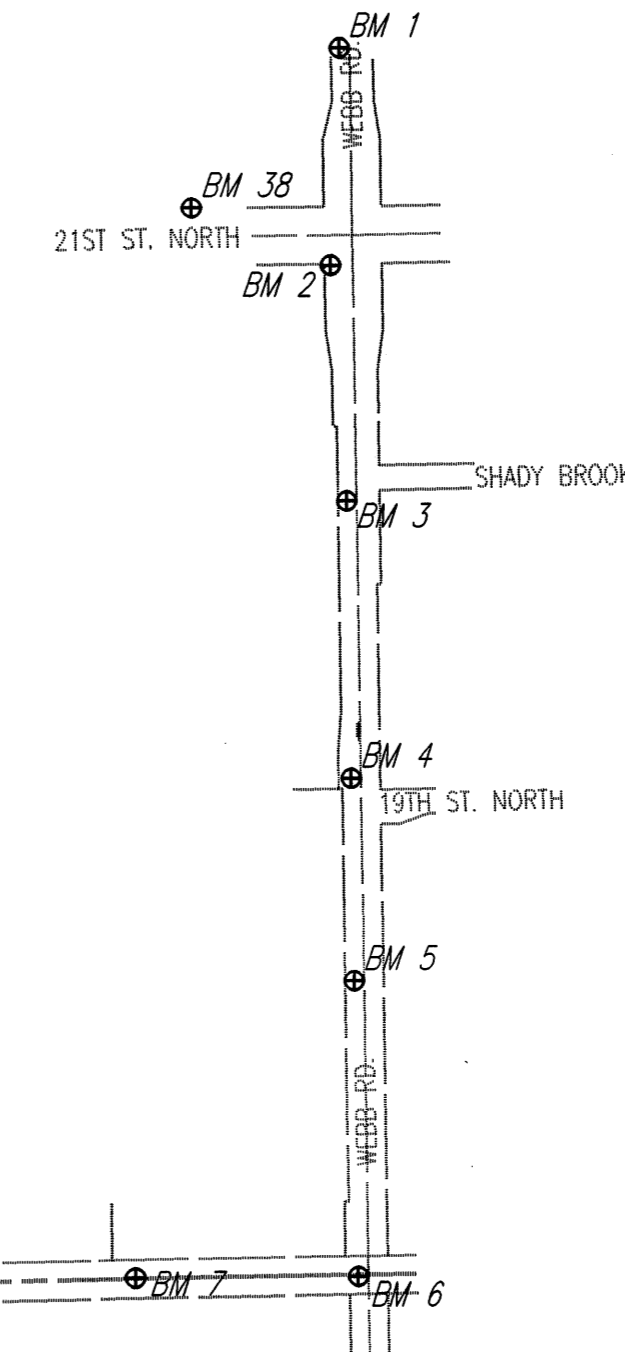
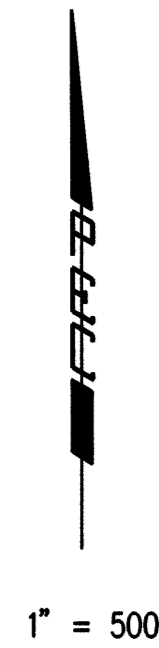
BM 33- USG BM STAMPED P-39-1934. 36' S. & 32' W. OF @ INTERSECTION OLIVER ST. & 17TH ST. NORTH.
ELEV.= 221.08

BM 35- BRASS DISC 43' W. & 32' S. OF @ INTERSECTION OF WOODLAWN & 17TH ST. NORTH.
ELEV.= 216.44

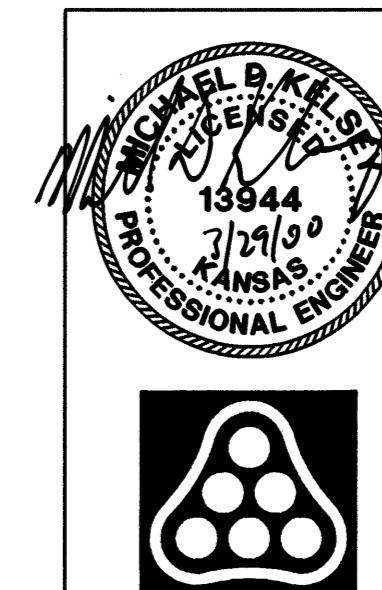
BM 36- BRASS DISC 27' E. & 31' S. @ INTERSECTION GOVERNEOUR ST. & FARMVIEW ST.
ELEV.= 205.41

BM 37- BRASS DISC ON NE CORNER RAIL ROAD SIGNAL BASE N. OF RAIL ROAD TRACKS ON W. SIDE ROCK ROAD.
ELEV.= 203.19

BM 38- BRASS DISC NE CORNER CONC. VAULT 415' W. @ WEBB ROAD & 77.2' N. @ 21ST ST. NORTH.
ELEV.= 205.70



DSNR: MDK OPER: JLM SCALE: 1"=500.00
 Q:\1996\96151\003\Phase2A\2A-WLVCNTRL 03-29-2000 01:43:08 pm



No.	Revision	By	Date

CITY OF WICHITA, KANSAS
 MICHAEL E. LINDEBAK, P.E. - CITY ENGINEER
 NORTHEAST TRANSMISSION FACILITY - PHASE 2A
VERTICAL CONTROL MAP
 C.O.W. Proj. No. 448-76-245-89465-000-000-001
Professional Engineering Consultants, P.A.
 303 S. TOPEKA • WICHITA, KANSAS 67202
 316-262-2691 • FAX 316-262-3003

Designed by	MDK, KJW	Job No.	34-96151-3	Sht. 4 of 17
Drawn by	JLM	Date	September 1999	