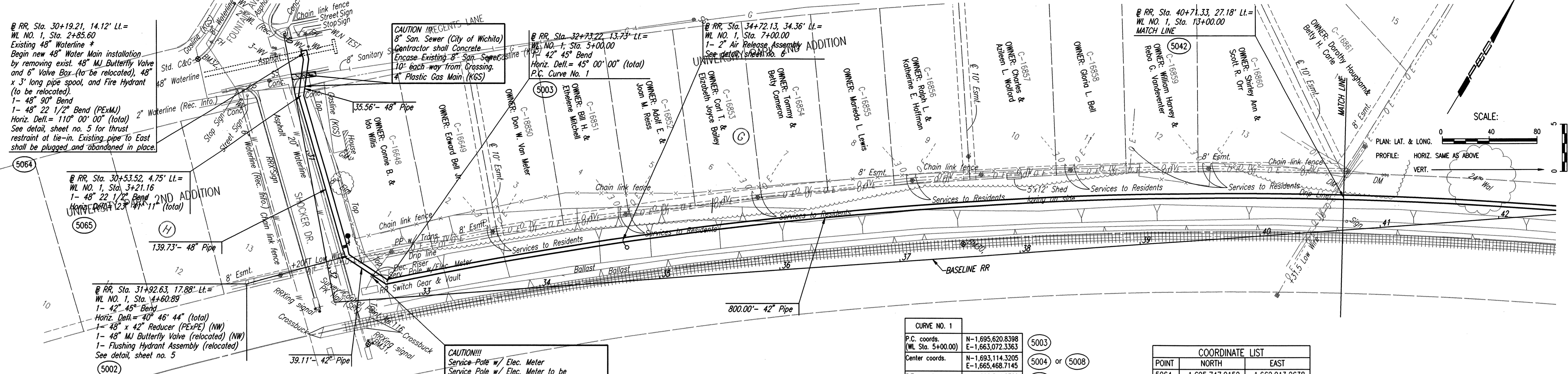


DATE: \_\_\_\_\_  
 BY: \_\_\_\_\_  
 CHECKED: \_\_\_\_\_  
 PLAN

DATE: \_\_\_\_\_  
 BY: \_\_\_\_\_  
 CHECKED: \_\_\_\_\_  
 PROFILE

DSNR, MDK OPER: JLM SCALE: 1"=40.00  
 Q:\1996\96151\003\Phase2A\2A-WLPP01 03-29-2000 01:46:44 pm



\*PRIOR TO BEGINNING CONSTRUCTION AND ORDERING PIPE THE CONTRACTOR SHALL EXCAVATE THE EXISTING 48\"/>

**CAUTION!!!**  
 Service Pole w/ Elec. Meter  
 Service Pole w/ Elec. Meter to be disconnected by KGE. Coordinate with KGE - Electric, Mr. Russ Chitwood at 261-6251.  
 (Provide at least 2 weeks notice)  
 Service Pole w/ Elec. Meter to be removed and reset by BN/SF Railroad. Coordinate w/ Signal Supervisor, Mr. Pete Samson at (316) 755-1350.  
 (Provide at least 2 weeks notice)  
 Disconnection, Removal & resetting costs to be subsidiary to site clearing and restoration.

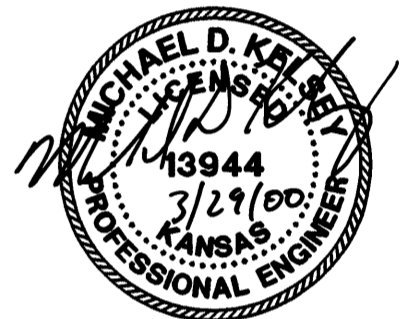
**CURVE NO. 1**

P.C. coords.	N-1,695,620.8398	E-1,663,072.3363
Center coords.	N-1,693,114.3205	E-1,665,468.7145
P.T. coords.	N-1,696,544.2700	E-1,664,958.1131
Radius	3,467.7468'	
Arc length	2,133.2092'	
Central angle	35° 14' 45"	
Tangent length	1,101.5633'	
Degree of curve	01° 39' 08"	
External distance	170.7570'	
Middle ordinate	162.7432'	

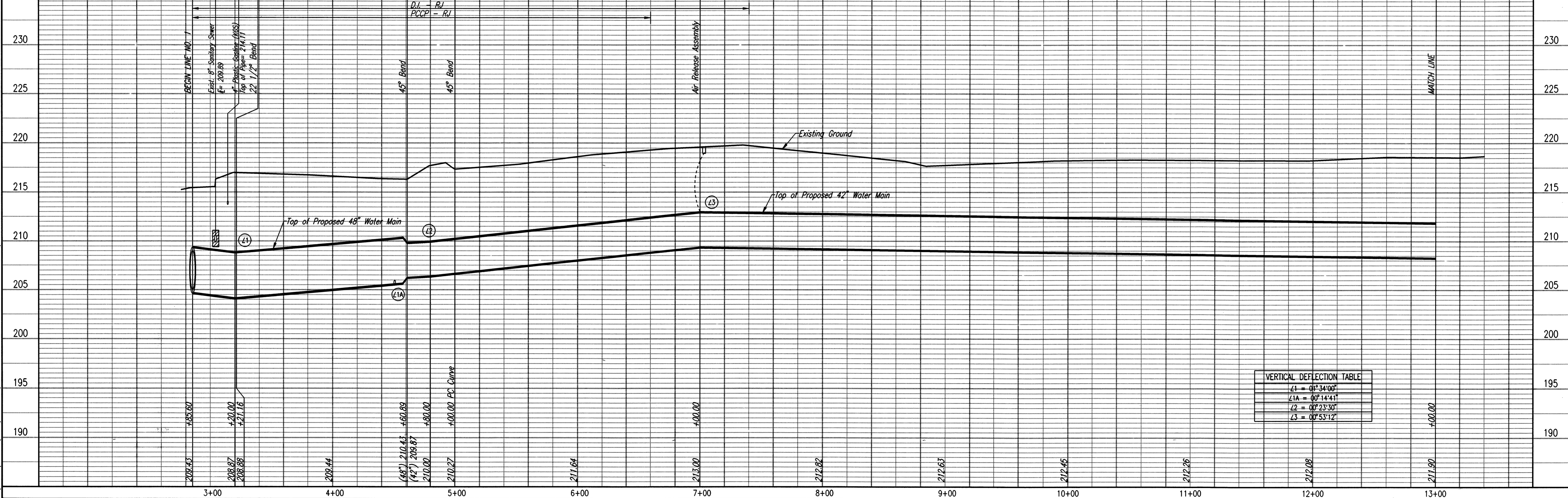
**COORDINATE LIST**

POINT	NORTH	EAST
5064	1,695,747.0152	1,662,913.2638
5065	1,695,715.4033	1,662,929.5466
5001	1,695,673.9775	1,662,975.4036
5002	1,695,621.7373	1,663,033.2318
5003	1,695,620.8398	1,663,072.3363
5042	1,696,102.3824	1,663,708.9550

(5000) = COORDINATE POINT NO.



**WATERLINE NO. 1**



**VERTICAL DEFLECTION TABLE**

L1	= 0° 34' 00"
L1A	= 0° 14' 41"
L2	= 0° 23' 30"
L3	= 0° 53' 12"

Sheet 8 of 17  
 Professional Engineering Consultants, P.A.  
 303 S. TOPEKA - WICHITA, KANSAS 67202  
 316-262-2691 • FAX 316-262-3003  
 City of Wichita, Kansas  
 Michael E. Lindebak, P.E. - CITY ENGINEER  
 NORTHEAST TRANSMISSION FACILITY - PHASE 2A  
 WATERLINE NO. 1  
 City of Wichita, Project No. 448-76-245-89465-000-000-001  
 Job No. 34-96151-3  
 Date September 1999  
 Designed By MDK, K/JW  
 Drawn By JLM