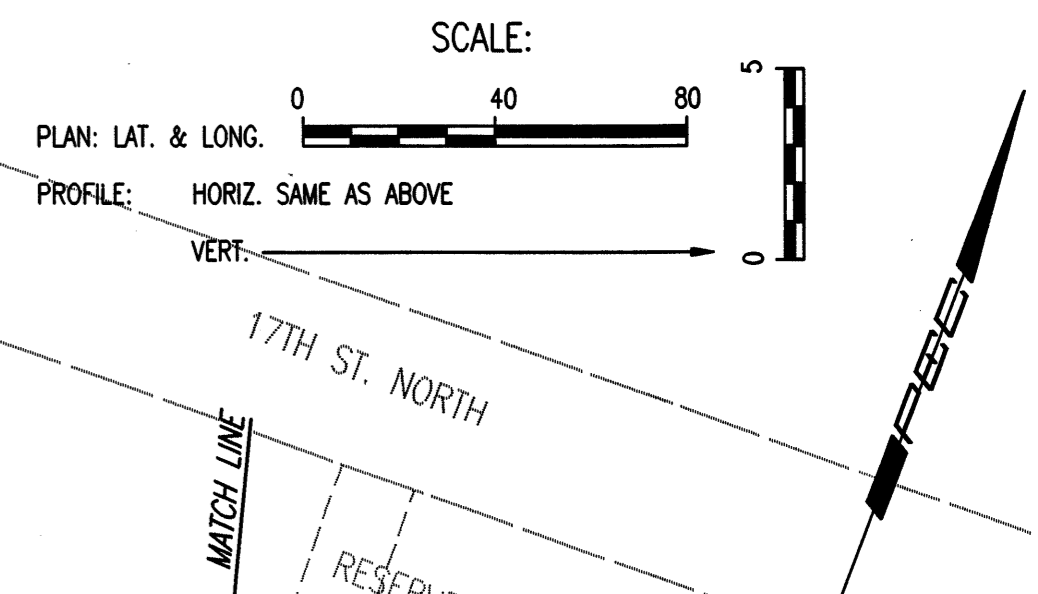
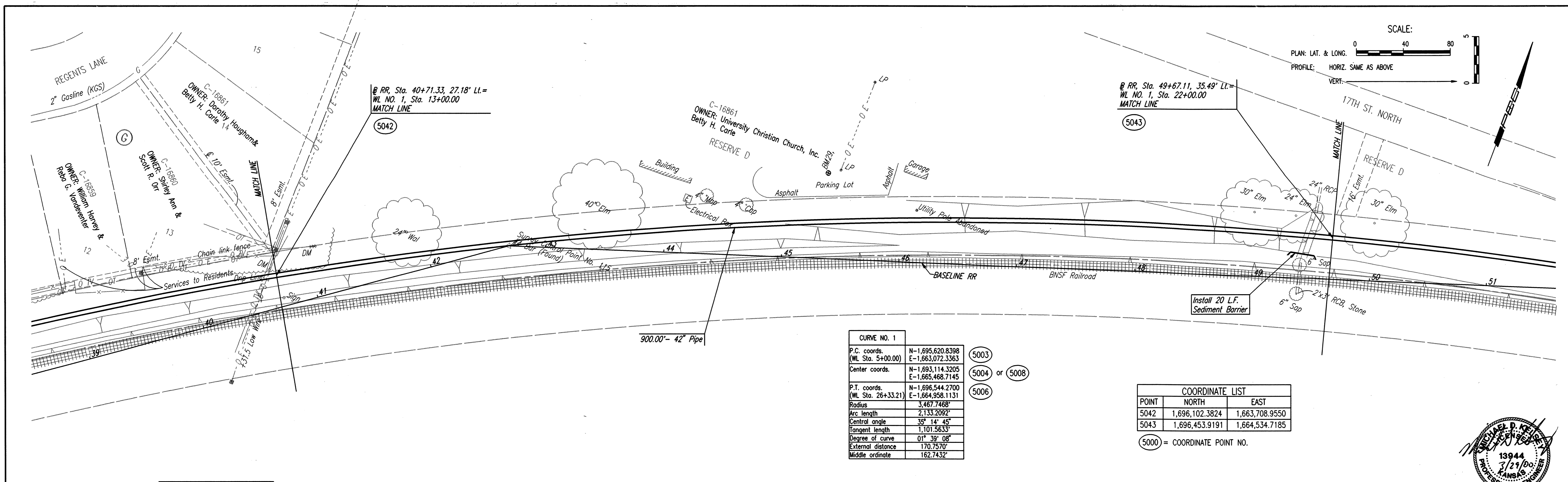


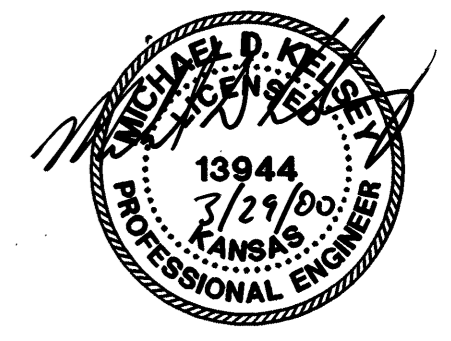
DATE	
BY	
CHECKED	CHECKED
PLAN	



CURVE NO. 1	
P.C. coords. (WL Sta. 5+00.00)	N-1,695,620.8398 E-1,663,072.3363
Center coords.	N-1,693,114.3205 E-1,665,468.7145
P.T. coords. (WL Sta. 26+33.21)	N-1,696,544.2700 E-1,664,958.1131
Radius	3,467.7468'
Arc length	2,133.2092'
Central angle	35° 14' 45"
Tangent length	1,101.5633'
Degree of curve	01° 39' 08"
External distance	170.7570'
Middle ordinate	162.7432'

COORDINATE LIST		
POINT	NORTH	EAST
5042	1,696,102.3824	1,663,708.9550
5043	1,696,453.9191	1,664,534.7185

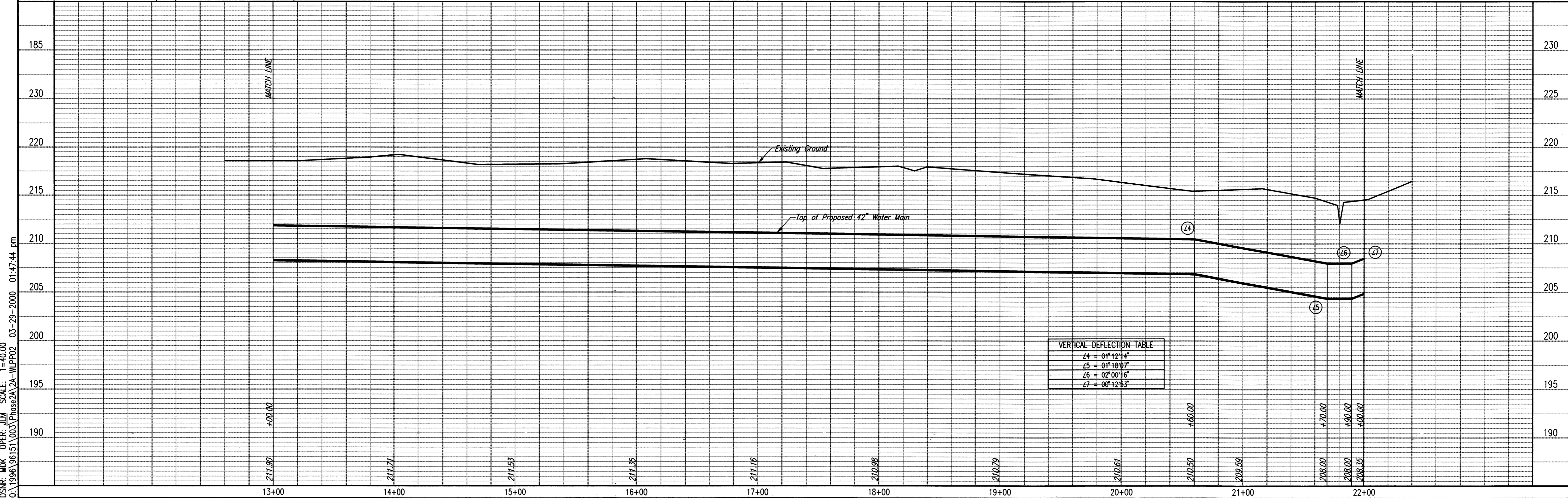
(5000) = COORDINATE POINT NO.



Unless noted otherwise, elevations shown are top of pipe
 All top of valve box elevations shall be constructed to match adjacent existing ground elevation.

WATERLINE NO. 1

DATE	
BY	
CHECKED	CHECKED
PROFILE	



DSNR: MDK OPER: JLM SCALE: 1"=40.00
 Q:\1996\96151\003\Phase2A\2A-WLPP02 03-29-2000 01:47:44 pm

Professional Engineering Consultants, P.A.
 303 S. TOPEKA - WICHITA, KANSAS 67202
 316-262-2691 • FAX 316-262-3003

City of Wichita, Kansas
 Michael E. Lindebak, P.E. - City Engineer
 Northeast Transmission Facility - Phase 2A
 WATERLINE NO. 1

City of Wichita, Project No. 448-76-245-89465-000-000-001

Designed By: MDK, K/JW
 Drawn By: JLM
 Job No. 34-96151-3
 Date September 1999

Sheet 9 of 17