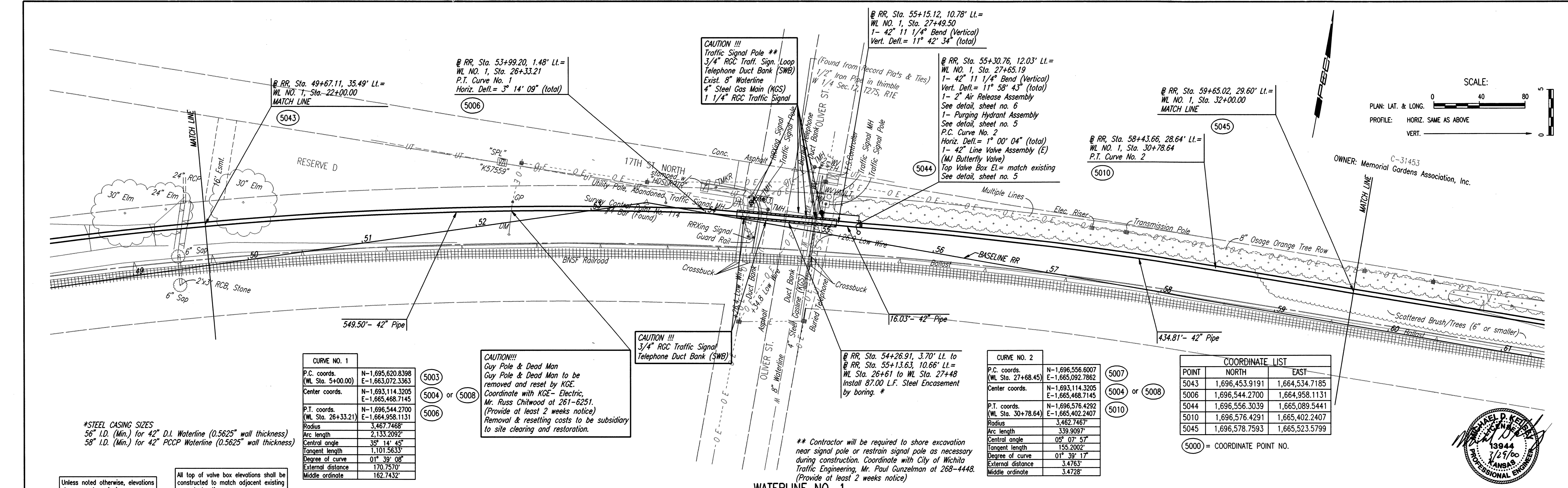


DATE: \_\_\_\_\_  
 BY: \_\_\_\_\_  
 CHECKED: \_\_\_\_\_  
 PLAN

DATE: \_\_\_\_\_  
 BY: \_\_\_\_\_  
 CHECKED: \_\_\_\_\_  
 PROFILE



\*STEEL CASING SIZES  
 56" I.D. (Min.) for 42" D.I. Waterline (0.5625" wall thickness)  
 58" I.D. (Min.) for 42" PCCP Waterline (0.5625" wall thickness)

CURVE NO. 1	
P.C. coords. (WL Sta. 5+00.00)	N-1,695,620.8398 E-1,663,072.3363
Center coords.	N-1,693,114.3205 E-1,665,468.7145
P.T. coords. (WL Sta. 26+33.21)	N-1,696,544.2700 E-1,664,958.1131
Radius	3,467.7468'
Arc length	2,133.2092'
Central angle	35° 14' 45"
Tangent length	1,101.5633'
Degree of curve	01° 39' 08"
External distance	170.7570'
Middle ordinate	162.7432'

**CAUTION!!!**  
 Guy Pole & Dead Man  
 Guy Pole & Dead Man to be removed and reset by KGE.  
 Coordinate with KGE - Electric,  
 Mr. Russ Chitwood at 261-6251.  
 (Provide at least 2 weeks notice)  
 Removal & resetting costs to be subsidiary to site clearing and restoration.

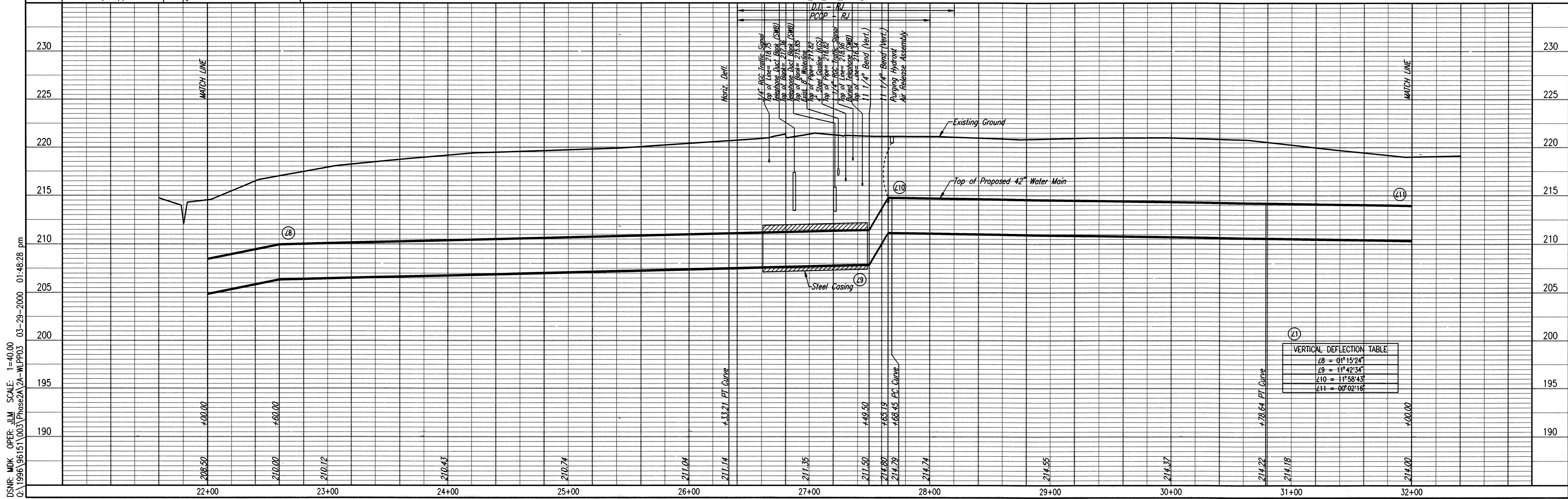
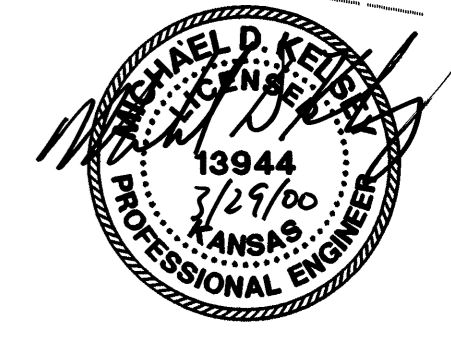
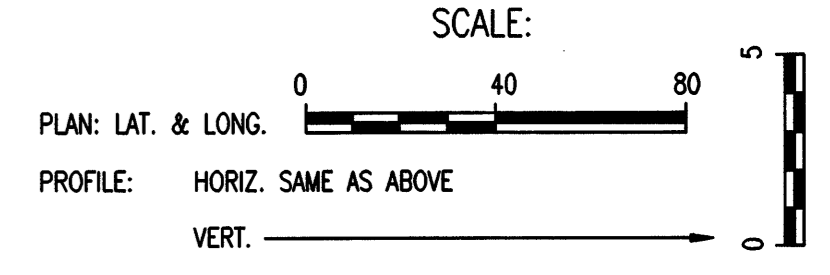
**CAUTION !!!**  
 3/4" RGC Traffic Signal  
 Telephone Duct Bank (SWB)

\*\* Contractor will be required to shore excavation near signal pole or restrain signal pole as necessary during construction. Coordinate with City of Wichita Traffic Engineering, Mr. Paul Gunzelman at 268-4448. (Provide at least 2 weeks notice)

CURVE NO. 2	
P.C. coords. (WL Sta. 27+68.45)	N-1,696,556.6007 E-1,665,092.7862
Center coords.	N-1,693,114.3205 E-1,665,468.7145
P.T. coords. (WL Sta. 30+78.64)	N-1,696,576.4292 E-1,665,402.2407
Radius	3,462.7467'
Arc length	339.9097'
Central angle	05° 07' 57"
Tangent length	155.2002'
Degree of curve	01° 39' 17"
External distance	3.4763'
Middle ordinate	3.4728'

COORDINATE LIST		
POINT	NORTH	EAST
5043	1,696,453.9191	1,664,534.7185
5006	1,696,544.2700	1,664,958.1131
5044	1,696,556.3039	1,665,089.5441
5010	1,696,576.4291	1,665,402.2407
5045	1,696,578.7593	1,665,523.5799

5000 = COORDINATE POINT NO.



VERTICAL DEFLECTION TABLE	
Δ8	= 01° 15' 24"
Δ9	= 11° 42' 34"
Δ10	= 11° 58' 43"
Δ11	= 00° 02' 16"

DSNR: MDK OPER: JLM SCALE: 1"=40.00  
 C:\1996\96151\003\Phase2A\2A-WLPP03 03-29-2000 01:48:28 pm

Professional Engineering Consultants, P.A.  
 303 S. TORREYA - WICHITA, KANSAS 67202  
 316-262-2691 • FAX 316-262-3665

Designed By MDK, KJW Job No. 34-96151-3  
 Drawn By JLM Date September 1999

CITY OF WICHITA, KANSAS  
 MICHAEL E. LINDEBAK, P.E. - CITY ENGINEER  
 NORTHEAST TRANSMISSION FACILITY - PHASE 2A  
**WATERLINE NO. 1**  
 CITY OF WICHITA PROJECT NO. 448-76-245-89465-000-000-001