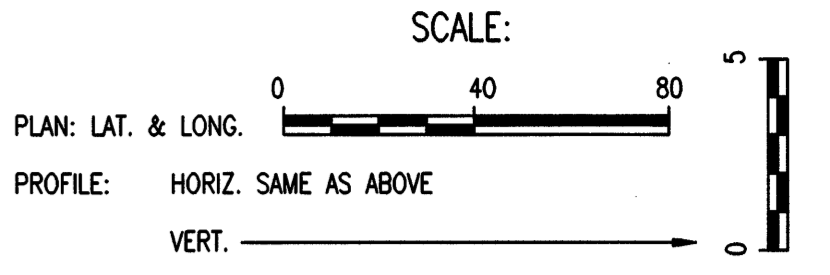
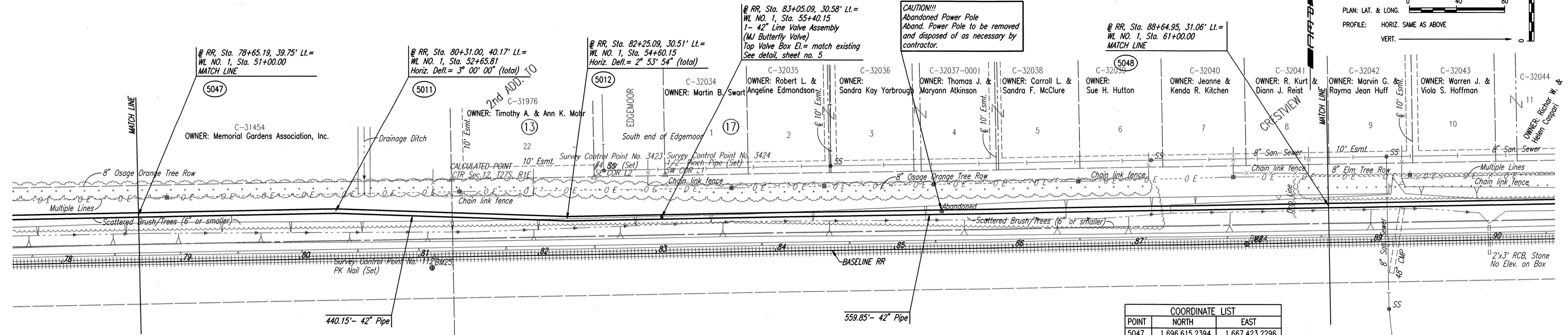


DATE: \_\_\_\_\_  
 BY: \_\_\_\_\_  
 CHECKED: \_\_\_\_\_  
 PLAN

DATE: \_\_\_\_\_  
 BY: \_\_\_\_\_  
 CHECKED: \_\_\_\_\_  
 PROFILE

DSNR, MDK OPER: JLM SCALE: 1"=40.00  
 C:\1998\96151\003\Phase2A-WLPP06 03-29-2000 01:54:10 pm

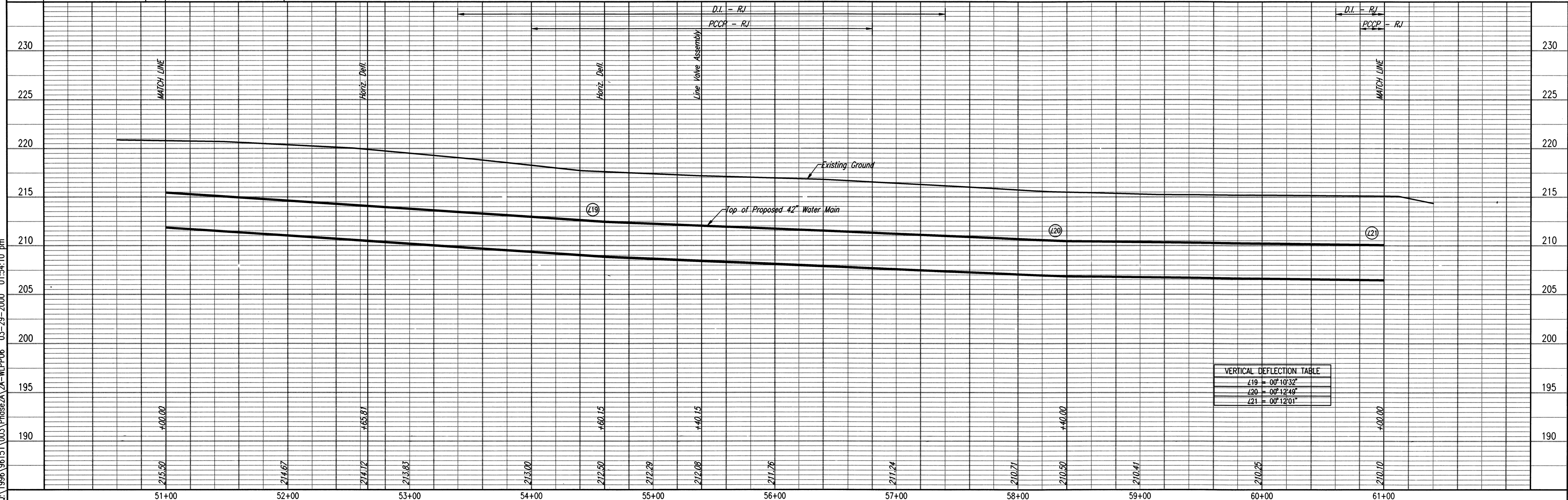


COORDINATE LIST		
POINT	NORTH	EAST
5047	1,696,615.2394	1,667,423.2296
5011	1,696,618.4229	1,667,589.0084
5012	1,696,611.9801	1,667,783.2389
5048	1,696,623.1316	1,668,422.9951

(5000) = COORDINATE POINT NO.



WATERLINE NO. 1



VERTICAL DEFLECTION TABLE	
L19	= 0° 10' 32"
L20	= 0° 12' 49"
L21	= 0° 12' 01"

Professional Engineering Consultants, P.A.  
 303 S. TORRENS, WICHITA, KANSAS 67202  
 316-262-2891 • FAX 316-262-3663

City of Wichita, Kansas  
 Michael E. Lindebak, P.E. - City Engineer  
 Northeast Transmission Facility - Phase 2A  
 WATERLINE NO. 1  
 City of Wichita Project No. 448-76-245-89465-000-000-001

Designed By: MDK, KJW  
 Drawn By: JLM  
 Job No.: 34-96151-3  
 Date: September 1999

Sheet 13 of 17