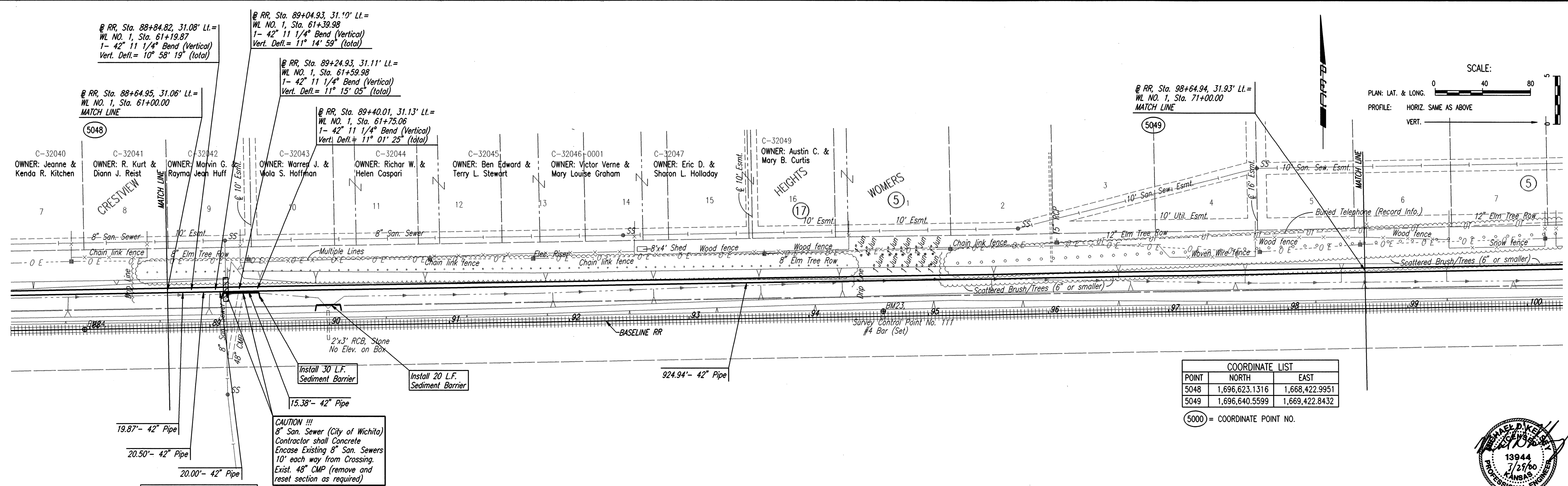


DATE	
BY	
CHECKED	
PLAN	

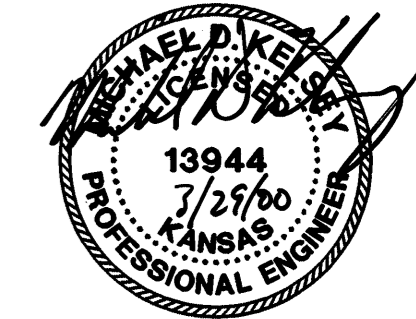
DATE	
BY	
CHECKED	
PROFILE	

DSNR: MDK OPER: JLM SCALE: 1"=40.00
 Q:\1996\96151\003\Phase2A\2A-WLPP07 03-29-2000 01:54:51 pm

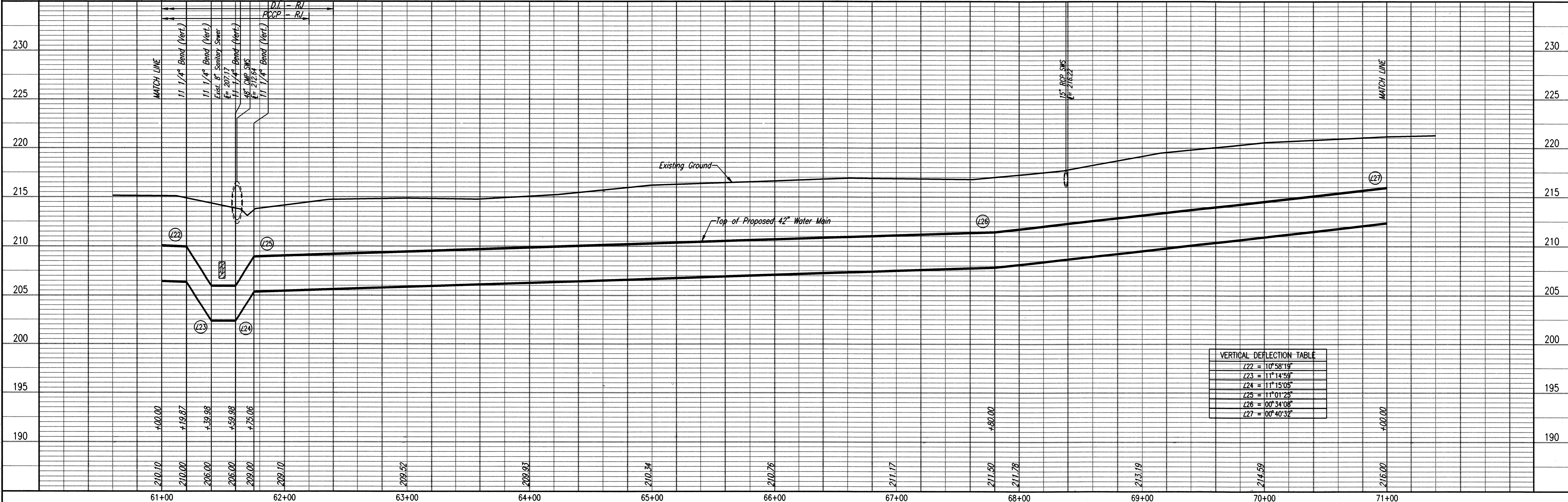


COORDINATE LIST		
POINT	NORTH	EAST
5048	1,696,623.1316	1,668,422.9951
5049	1,696,640.5599	1,669,422.8432

(5000) = COORDINATE POINT NO.



WATERLINE NO. 1



VERTICAL DEFLECTION TABLE	
L22	= 10° 58' 19"
L23	= 11° 14' 59"
L24	= 11° 15' 05"
L25	= 11° 01' 25"
L26	= 00° 34' 08"
L27	= 00° 40' 32"

Professional Engineering Consultants, P.A.
 303 S. TOPEKA • WICHITA, KANSAS 67202
 316-262-2691 • FAX 316-262-3003

City of Wichita, Kansas
 Michael E. Lindemak, P.E. - CITY ENGINEER
 NORTHEAST TRANSMISSION FACILITY - PHASE 2A
 WATERLINE NO. 1

Job No. 34-96151-3
 Date September 1999

Designed By MDK, K/JW
 Drawn By JLM

Sheet 14 of 17