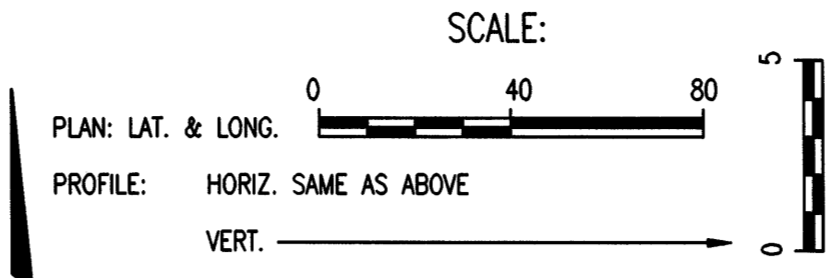
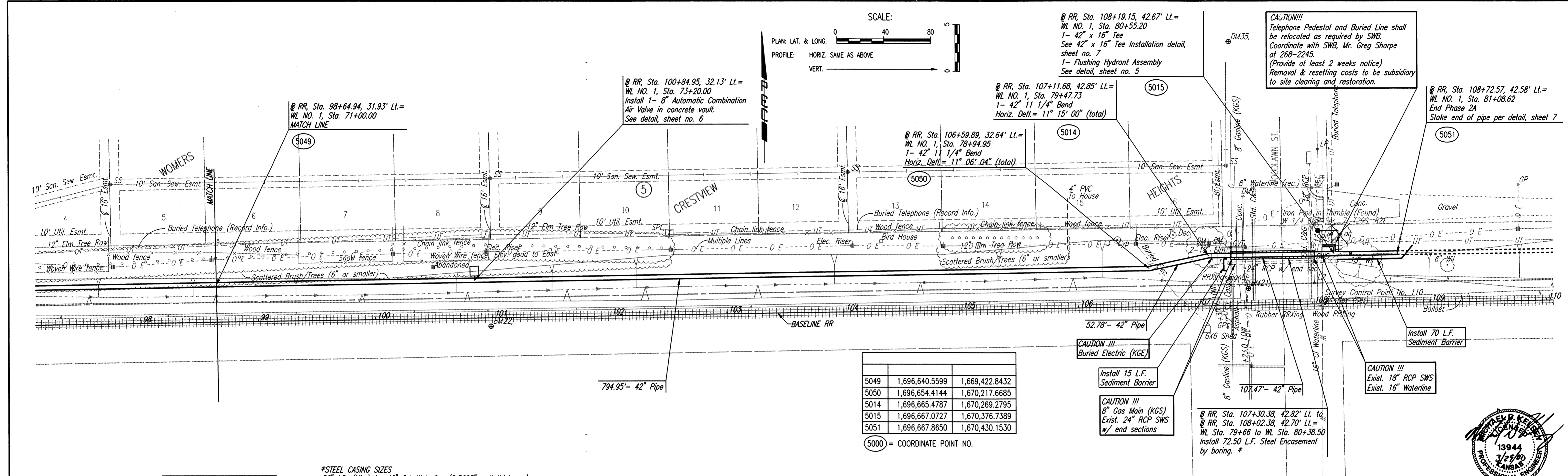


DATE	
BY	
CHECKED	CHECKED
PLAN	

DATE	
BY	
CHECKED	CHECKED
PROFILE	

DSNR, MDX OPER: JLM SCALE: 1"=40.00
 Q:\1996\96151\003\Phase2A\2A-WLPP08 03-29-2000 01:55:34 pm

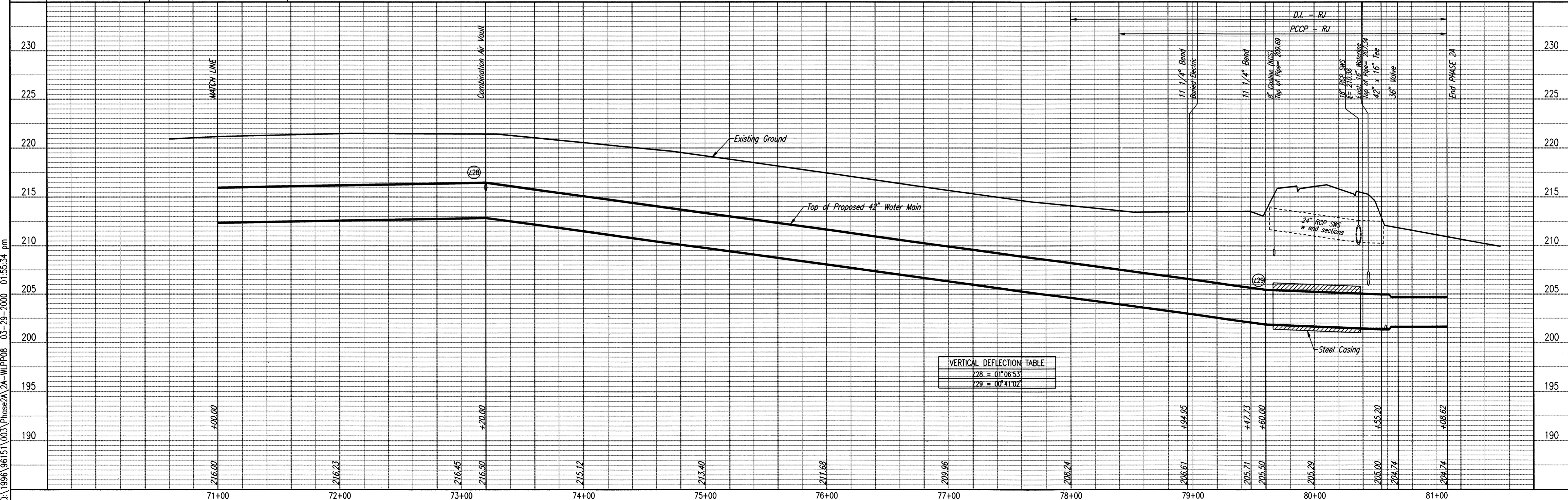


5049	1,696,640.5599	1,669,422.8432
5050	1,696,654.4144	1,670,217.6685
5014	1,696,665.4787	1,670,269.2795
5015	1,696,667.0727	1,670,376.7389
5051	1,696,667.8650	1,670,430.1530

(5000) = COORDINATE POINT NO.

*STEEL CASING SIZES
 56" I.D. (Min.) for 42" D.I. Waterline (0.5625" wall thickness)
 58" I.D. (Min.) for 42" PCCP Waterline (0.5625" wall thickness)

Unless noted otherwise, elevations shown are top of pipe
 All top of valve box elevations shall be constructed to match adjacent existing ground elevation.



VERTICAL DEFLECTION TABLE	
78	= 01°06'53"
79	= 00°41'02"



Professional Engineering Consultants, P.A.
 303 S. TOPEKA - WICHITA, KANSAS 67202
 316-262-2691 • FAX 316-262-3003

City of Wichita, Kansas
 Michael E. Lindebak, P.E. - City Engineer
 Northeast Transmission Facility - Phase 2A

Job No. 34-96151-3
 Date September 1999

Designed By MDK, K/JW
 Drawn By JLM

Sheet 15 of 17