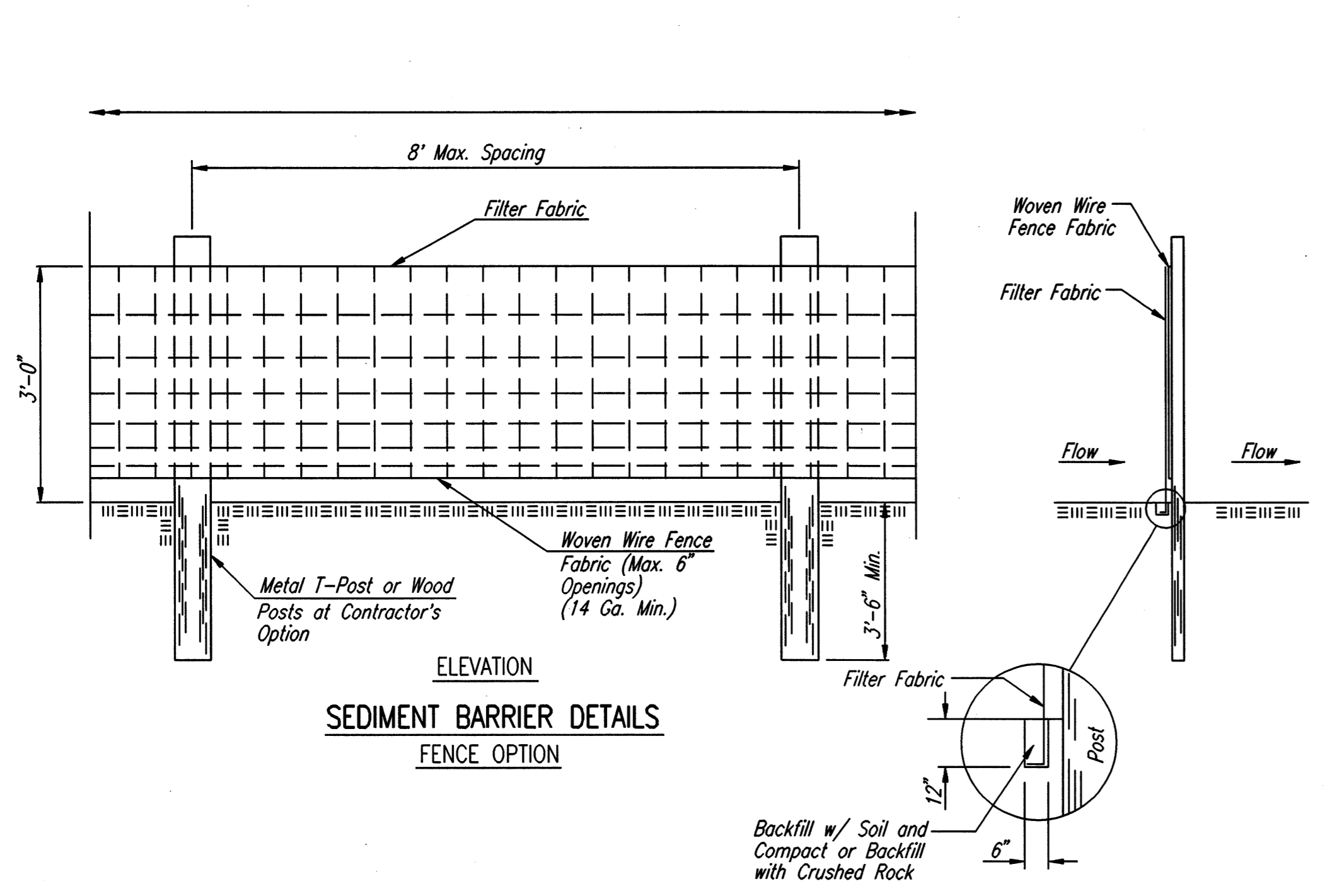
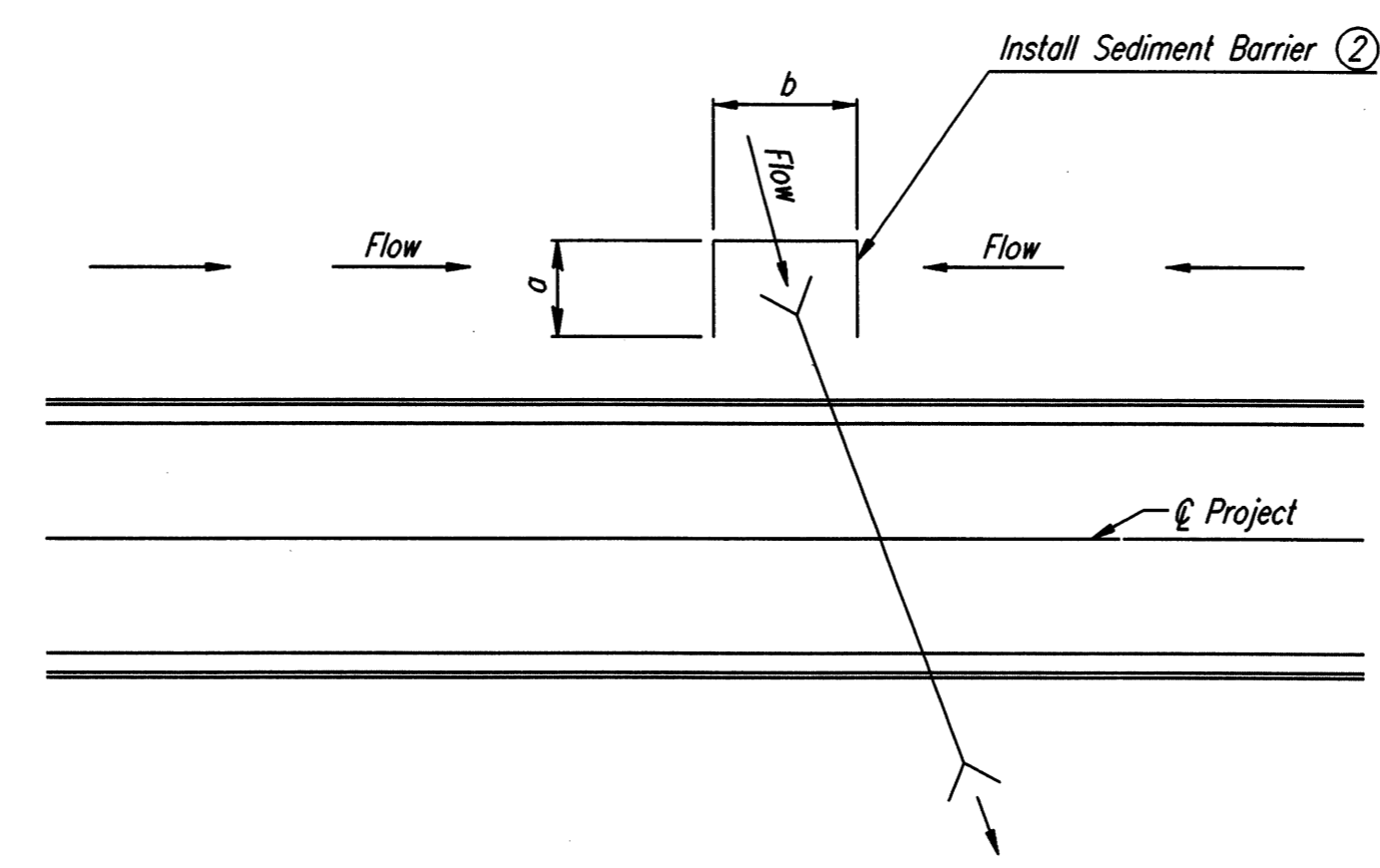


① Seed with Annual Rye at the rate of 4 lbs./1000 S.F.
Mulch with Hay at the rate of 90 lbs./1000 S.F.

SEDIMENT CONTROL
CURB AND GUTTER STREET SECTION

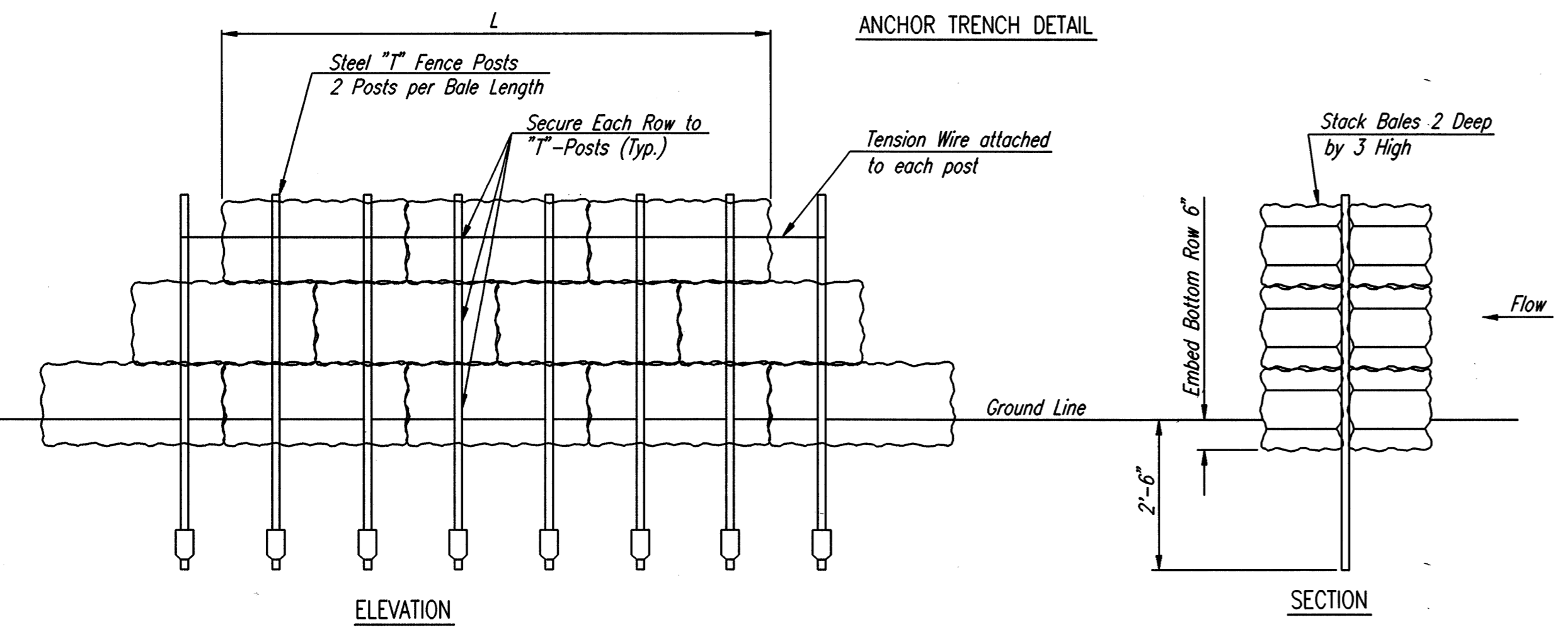


SEDIMENT BARRIER DETAILS
FENCE OPTION

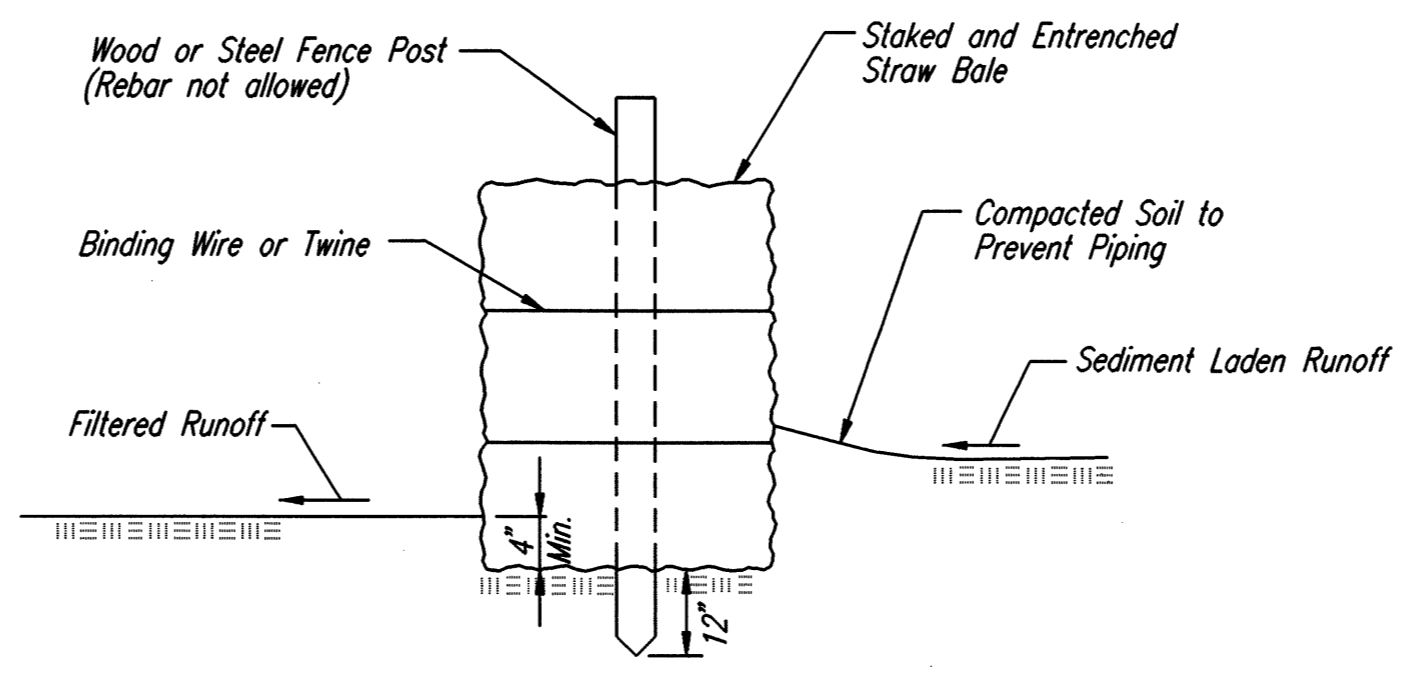


SEDIMENT CONTROL
TYPICAL CROSS ROAD PIPE LOCATION

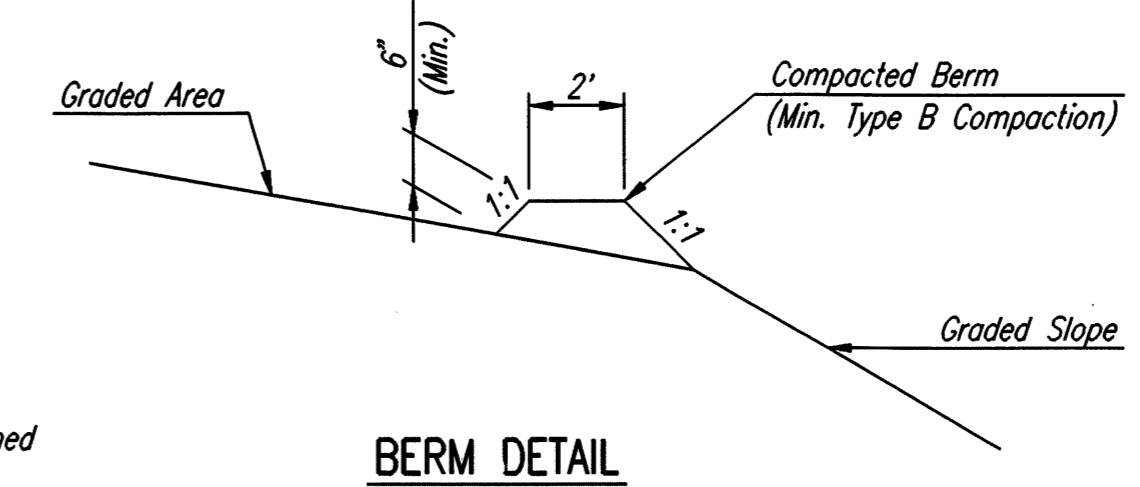
② "a" Dimension = Ditch bottom width + 10'
"b" Dimension = End Section or Headwall width + 10'



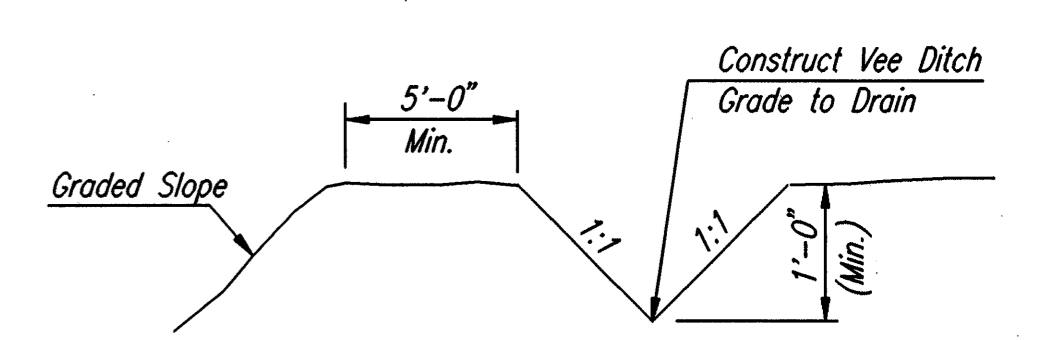
SEDIMENT BARRIER DETAILS
HAY/STRAW BALE OPTION



LINEAR SEDIMENT BARRIER



BERM DETAIL



INTERCEPT DITCH DETAIL

TEMPORARY EROSION CONTROL DETAILS FOR SLOPE PROTECTION

The Engineer may determine that the height of Berm or depth of Ditch should be increased over that shown if Drainage conditions are producing Slope Erosion.

- SEDIMENT BARRIERS SHALL BE INSTALLED AT LOCATIONS SHOWN ON THE PLANS OR AS DIRECTED BY THE ENGINEER. ADDITIONAL SEDIMENT BARRIERS WILL BE INSTALLED AT LOCATIONS AS DIRECTED BY THE ENGINEER WITH NO ADJUSTMENT IN UNIT PRICE.
- SEDIMENT BARRIERS SHALL BE ERECTED PRIOR TO THE COMMENCEMENT OF EARTHWORK OPERATIONS IN A GIVEN BASIN. REMOVAL AND DISPOSAL OF ACCUMULATED SILT AND DEBRIS AND/OR REMOVAL AND RECONSTRUCTION OF SEDIMENT BARRIERS WILL BE PERFORMED THROUGHOUT THE PROJECT LIFE WHEN DEBRIS REACHES ONE-THIRD THE FENCE HEIGHT OR AS DEEMED NECESSARY BY THE ENGINEER. SEDIMENT BARRIERS AND ACCUMULATED DEBRIS SHALL BE REMOVED AND DISPOSED OF BY THE CONTRACTOR AFTER TURF COVER HAS BEEN ESTABLISHED, UNLESS OTHER ARRANGEMENTS HAVE BEEN AGREED TO.
- FILTER FABRIC FOR FENCE OPTION SEDIMENT BARRIERS SHALL BE RESISTANT TO ULTRAVIOLET LIGHT. MATERIALS MAY BE SUPPLIED BY THE FOLLOWING MANUFACTURERS:
 - MIRAFI, INC. - 100X
 - HOECHST FIBERS INDUSTRIES - TREVIRA 1115
 - EXXON - TYPAR 3301 W

MATERIALS SUPPLIED BY THE ABOVE NAMED MANUFACTURERS SHALL BE ACCEPTED UPON VISUAL INSPECTION BY THE ENGINEER. OTHER COMPARABLE MATERIALS MAY BE USED IF APPROVED BY THE ENGINEER.

FILTER FABRIC SHALL BE ATTACHED TO FENCE FABRIC BY MEANS OF THE WIRES OR HOG RINGS PRIOR TO ATTACHMENT OF FENCE/FABRIC COMBINATION ONTO THE POSTS.

- BALES USED FOR SEDIMENT BARRIERS MAY BE EITHER HAY OR STRAW, PROVIDED THEY ARE SOUND AND INTACT.
- TEMPORARY EROSION CONTROL BERMS AND/OR INTERCEPT DITCHES SHALL BE CONSTRUCTED AT LOCATIONS SHOWN ON THE PLANS OR AS DIRECTED BY THE ENGINEER. ADDITIONAL BERMS AND/OR DITCHES MAY BE REQUIRED AT NO ADJUSTMENT IN UNIT PRICE(S).

WHERE TEMPORARY EROSION CONTROL BERMS AND/OR INTERCEPT DITCHES ARE USED, ALL AREAS WHERE FLOW IS CONCENTRATED SHALL BE PROTECTED BY SILTATION BARRIERS PRIOR TO DISCHARGING INTO ANY DITCH, STORM SEWER, OR WATERCOURSE.

- MEASUREMENT AND PAYMENT: THE ITEM "SEDIMENT BARRIERS", "EROSION CONTROL INTERCEPT DITCH", "EROSION CONTROL BERM" AND "LINEAR SEDIMENT BARRIERS" SHALL BE MEASURED AND PAID FOR AT THE CONTRACT UNIT PRICE BID PER LINEAL FOOT COMPLETE IN PLACE OF THE VARIOUS BID ITEMS SHOWN. SAID PRICE SHALL BE CONSIDERED FULL COMPENSATION FOR EXCAVATION, COMPACTION, BACKFILL, SEDIMENT AND DEBRIS REMOVAL AND DISPOSAL, AND ALL MATERIALS, LABOR, TOOLS, AND INCIDENTALS NECESSARY TO COMPLETE THE WORK. RECONSTRUCTION OF EROSION CONTROL MEASURES WHICH ARE DESTROYED BY WIND, FLOOD, FIRE, OR BY THE ACTIONS OF THE CONTRACTOR OR OTHERS SHALL BE PERFORMED BY THE CONTRACTOR AS DIRECTED BY THE ENGINEER AT NO ADDITIONAL COST. WHERE ADJUSTMENTS IN QUANTITIES ARE REQUIRED BY FIELD CONDITIONS, THERE SHALL BE NO ADJUSTMENT IN UNIT PRICE.

THE ITEM "TEMPORARY SEEDING AND MULCHING" SHALL BE MEASURED AND PAID FOR AT THE CONTRACT PRICE BID PER ACRE OR PER LUMP SUM, AS INDICATED IN THE PROPOSAL.

DSNR: MDK OPER: JLM SCALE: 1=1.00
 Q:\1996\96151\003\Phase2A\2A-ERSD1L1 03-29-2000 01:57:15 pm



No.	Revision	By	Date
CITY OF WICHITA, KANSAS MICHAEL E. LINDEBAK, P.E. - CITY ENGINEER NORTHEAST TRANSMISSION FACILITY - PHASE 2A EROSION CONTROL AND SEDIMENT BARRIER DETAILS C.O.W. Proj. No. 448-76-245-89465-000-000-001 Professional Engineering Consultants, P.A. 303 S. TOPEKA • WICHITA, KANSAS 67202 316-262-2691 • FAX 316-262-3003			
Designed by	MDK, KJW	Job No.	34-96151-3
Drawn by	JLM	Date	September 1999