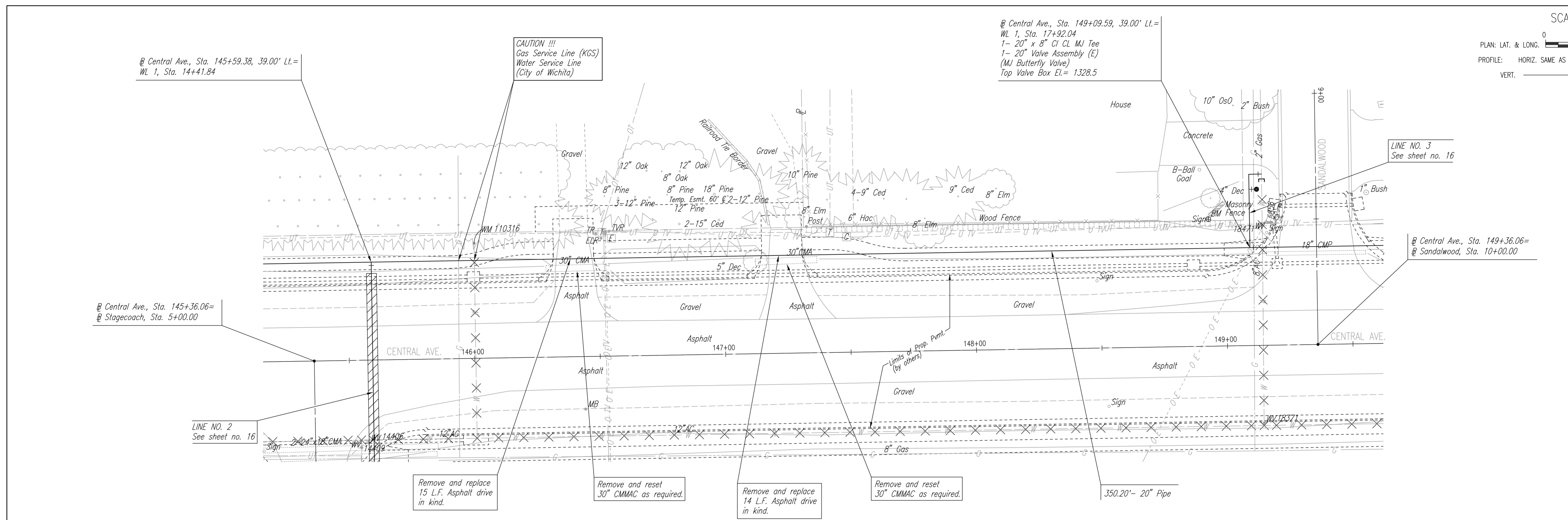


PLAN	CHECKED	CHECKED
BY		
DATE		

PROFILE	CHECKED	CHECKED
BY		
DATE		

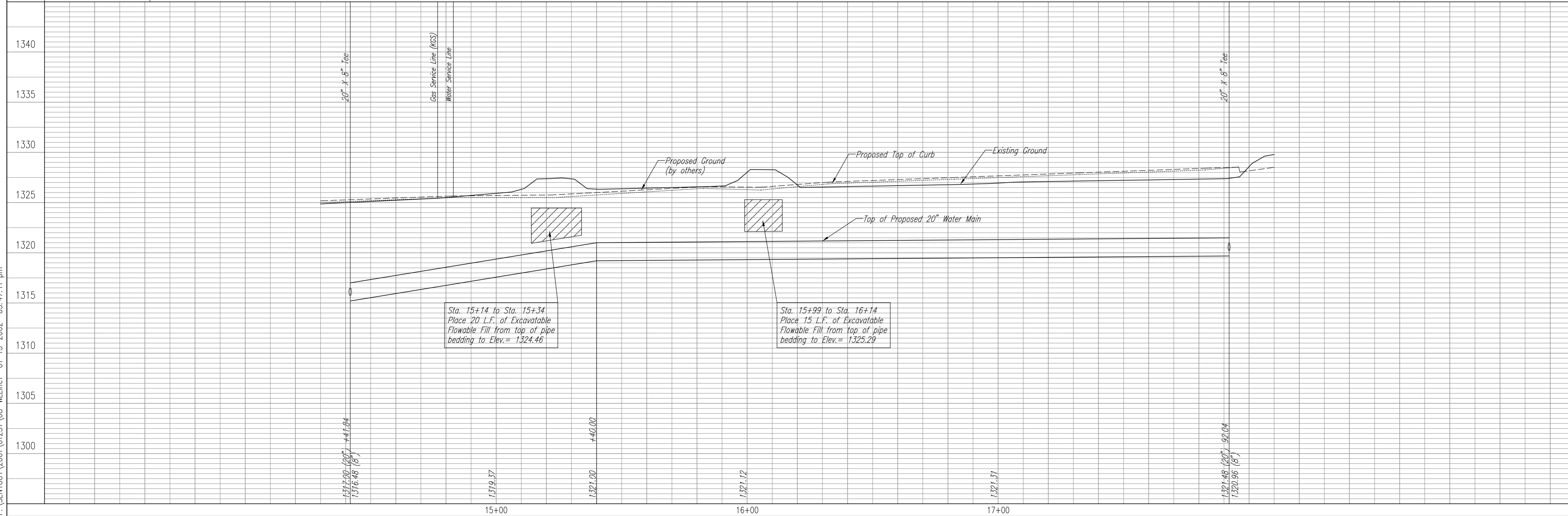
DSNR: MDK OPER: DAW SCALE: 1"=20.00
 F:\SENTOUT\2001\01257\08-WLine1_01-15-2002_03:47:11.pm



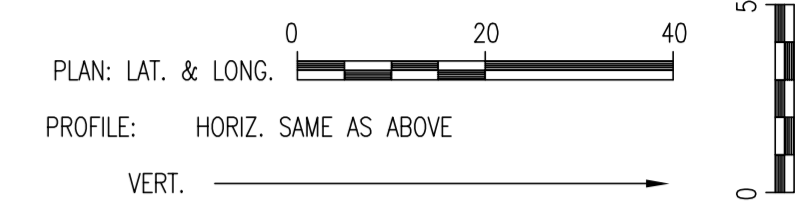
Unless noted otherwise, elevations shown are top of pipe

WATERLINE NO. 1

✕ - Denotes Waterline to be Abandoned.



SCALE:



CITY OF WICHITA, KANSAS
 MICHAEL E. LINDBERGH, P.E. - CITY ENGINEER
 20" WATERLINE IMPROVEMENTS IN CENTRAL
 143RD STREET EAST TO 159TH STREET EAST
WATERLINE NO. 1
 CITY OF WICHITA PROJECT NO. 448-89551

Professional Engineering Consultants, P.A.
 303 S. TOPEKA • WICHITA, KANSAS 67202
 316-262-2691 • FAX 316-262-3003

Designed By: MDK
 Drawn By: DAW
 Job No.: 34-01257-042
 Date: June 2001