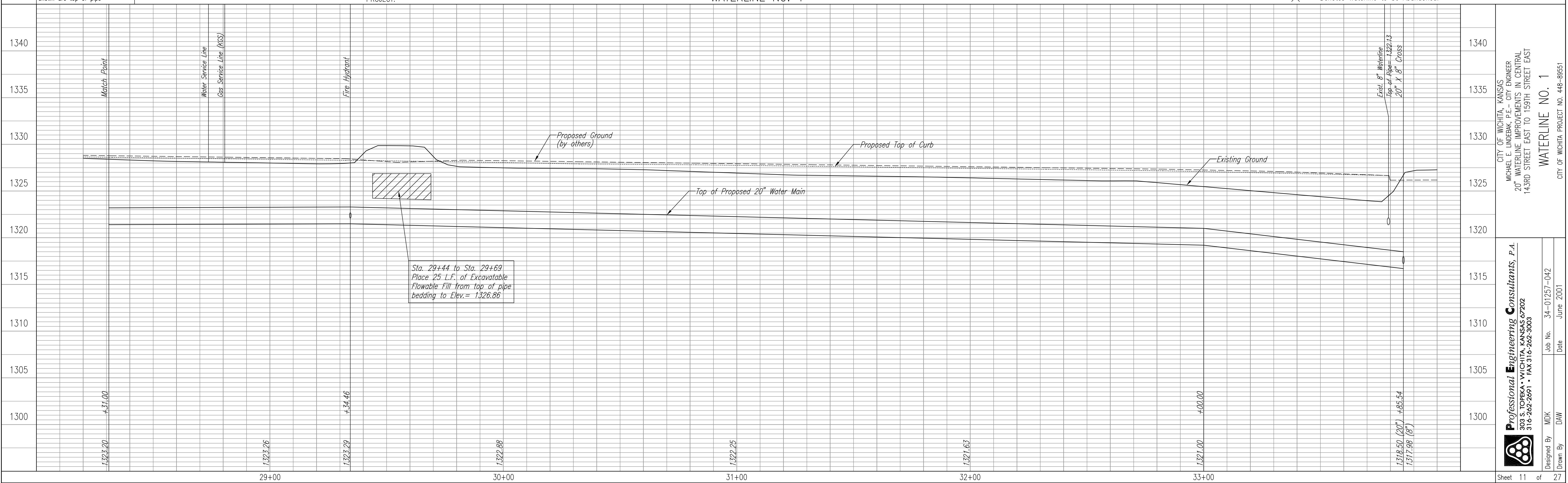
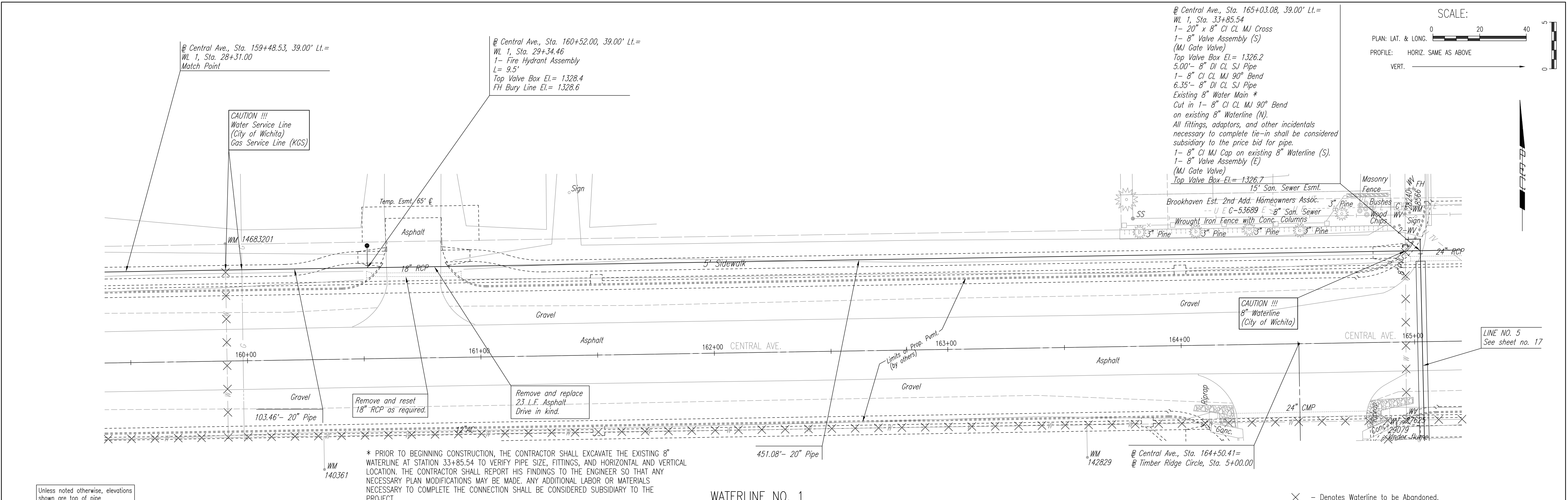


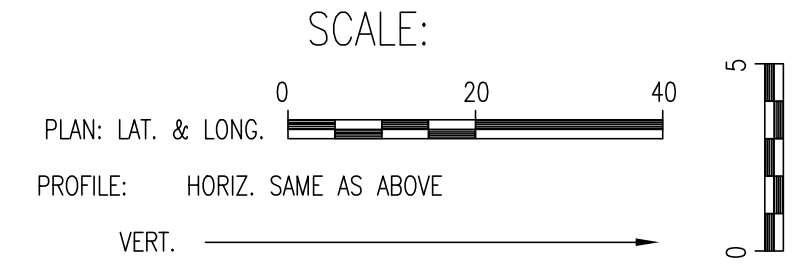
BY	DATE
CHECKED	CHECKED
PLAN	

BY	DATE
CHECKED	CHECKED
PROFILE	

DSNR: MDK OPER: DAW SCALE: 1"=20.00
 F:\SENTOUT\2001\07257\11-WLine1_01-15-2002_03:48:13 pm



@ Central Ave., Sta. 165+03.08, 39.00' Lt. =
 WL 1, Sta. 33+85.54
 1- 20" x 8" CI CL MJ Cross
 1- 8" Valve Assembly (S)
 (MJ Gate Valve)
 Top Valve Box El. = 1326.2
 5.00'- 8" DI CL SJ Pipe
 1- 8" CI CL MJ 90° Bend
 6.35'- 8" DI CL SJ Pipe
 Existing 8" Water Main *
 Cut in 1- 8" CI CL MJ 90° Bend
 on existing 8" Waterline (N).
 All fittings, adaptors, and other incidentals
 necessary to complete tie-in shall be considered
 subsidiary to the price bid for pipe.
 1- 8" CI MJ Cap on existing 8" Waterline (S).
 1- 8" Valve Assembly (E)
 (MJ Gate Valve)
 Top Valve Box El. = 1326.7
 15' San. Sewer Esmt.

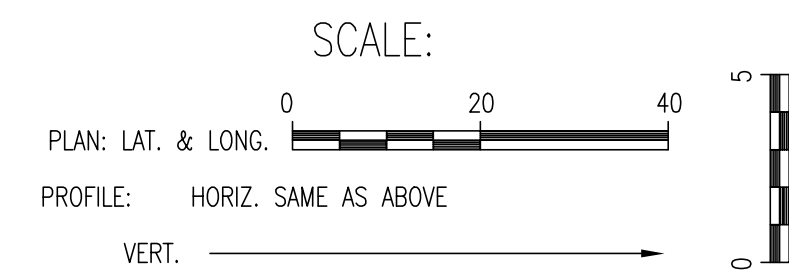


CITY OF WICHITA, KANSAS
 MICHAEL E. UNDERBAK, P.E. - CITY ENGINEER
 20" WATERLINE IMPROVEMENTS IN CENTRAL
 143RD STREET EAST TO 159TH STREET EAST
 WATERLINE NO. 1
 CITY OF WICHITA PROJECT NO. 448-8951

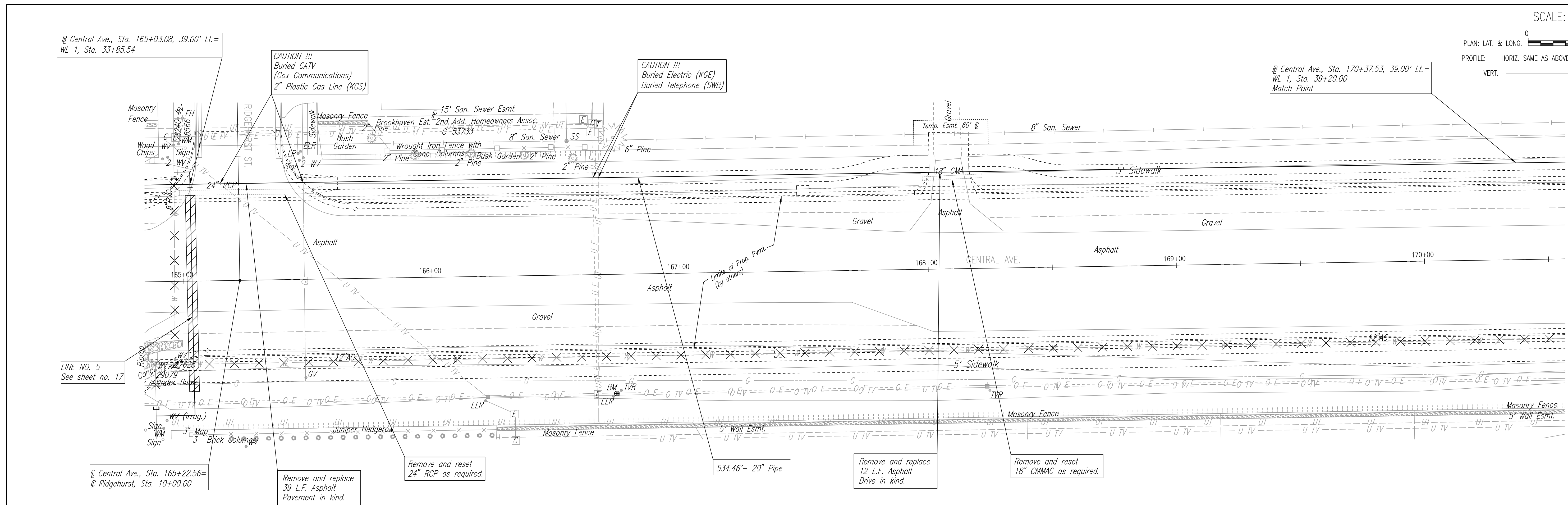
Professional Engineering Consultants, P.A.
 303 S. OREGON - WICHITA, KANSAS 67202
 316-262-2691 - FAX 316-262-3068
 Designed By: MDK
 Drawn By: DAW
 Job No. 34-01257-042
 Date June 2001
 Sheet 11 of 27

@ Central Ave., Sta. 165+03.08, 39.00' Lt. =
 Wl 1, Sta. 33+85.54

@ Central Ave., Sta. 170+37.53, 39.00' Lt. =
 Wl 1, Sta. 39+20.00
 Match Point



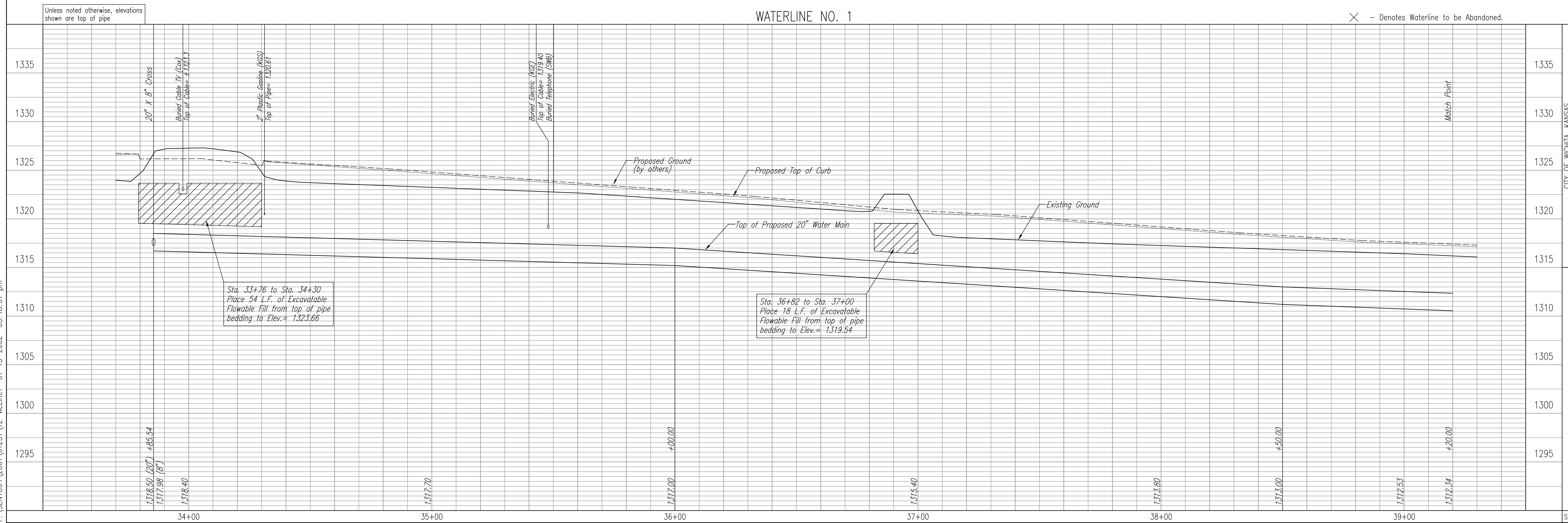
PLAN	CHECKED	DATE
	CHECKED	



PROFILE	CHECKED	DATE
	CHECKED	

WATERLINE NO. 1

✕ - Denotes Waterline to be Abandoned.



DSNR: MDK OPER: DAW SCALE: 1=20.00
 F:\SENTOUT\2001\01257\12-WL1ne1_01-15-2002_03:48:37.pm

CITY OF WICHITA, KANSAS
 MICHAEL E. UNDERHILL, P.E., ENGINEER
 20\"/>

Professional Engineering Consultants, P.A.
 303 S. TOPEKA • WICHITA, KANSAS 67202
 316-262-2691 • FAX 316-262-3003

Designed By: MDK Date: June 2001
 Drawn By: DAW

Sheet 12 of 27