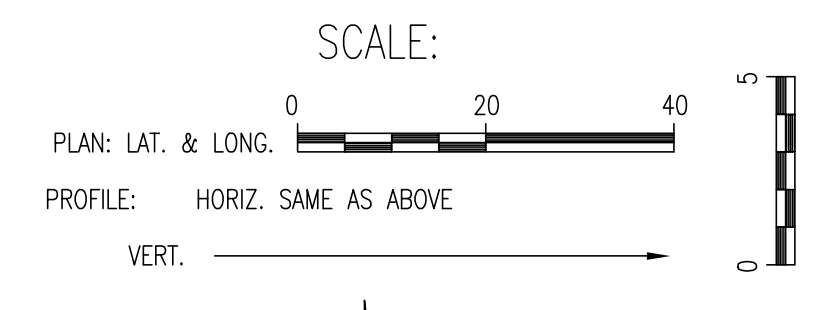
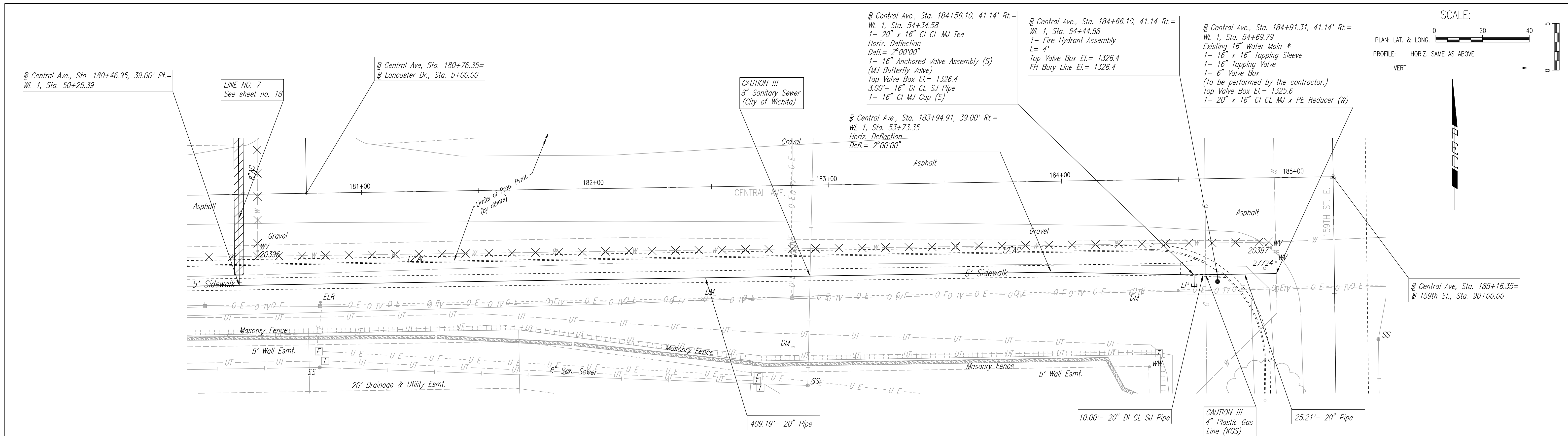
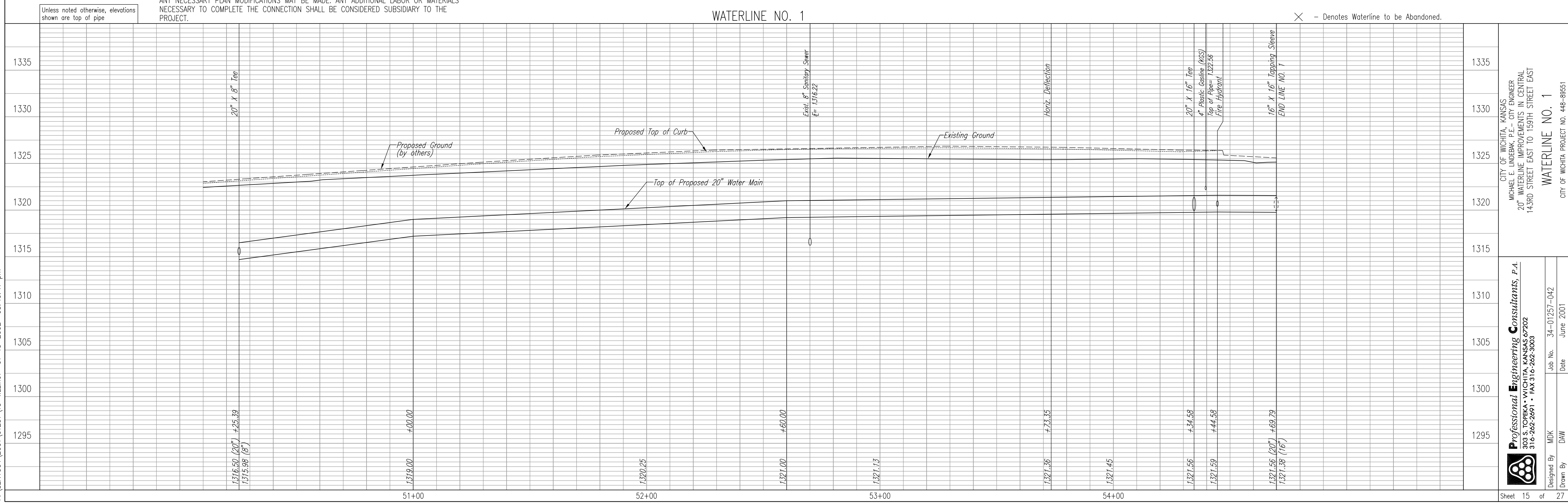


PLAN	CHECKED	CHECKED
BY		
DATE		



* PRIOR TO BEGINNING CONSTRUCTION, THE CONTRACTOR SHALL EXCAVATE THE EXISTING 16" WATERLINE AT STATION 54+69.79 TO VERIFY PIPE SIZE, TYPE, FITTINGS, AND HORIZONTAL AND VERTICAL LOCATION. THE CONTRACTOR SHALL REPORT HIS FINDINGS TO THE ENGINEER SO THAT ANY NECESSARY PLAN MODIFICATIONS MAY BE MADE. ANY ADDITIONAL LABOR OR MATERIALS NECESSARY TO COMPLETE THE CONNECTION SHALL BE CONSIDERED SUBSIDIARY TO THE PROJECT.

PROFILE	CHECKED	CHECKED
BY		
DATE		



DSNR: MDK OPER. DAW SCALE: 1"=20.00
 F:\SENTOUT\2001\01257\15-WLLine1 01-15-2002 03:49:47 pm

CITY OF WICHITA, KANSAS
 MICHAEL E. UNDERK, P.E. - CITY ENGINEER
 20" WATERLINE IMPROVEMENTS IN CENTRAL
 143RD STREET EAST TO 159TH STREET EAST
 WATERLINE NO. 1
 CITY OF WICHITA PROJECT NO. 448-89551

Professional Engineering Consultants, P.A.
 303 S. TOPEKA - WICHITA, KANSAS 67202
 316-262-2691 • FAX 316-262-3003

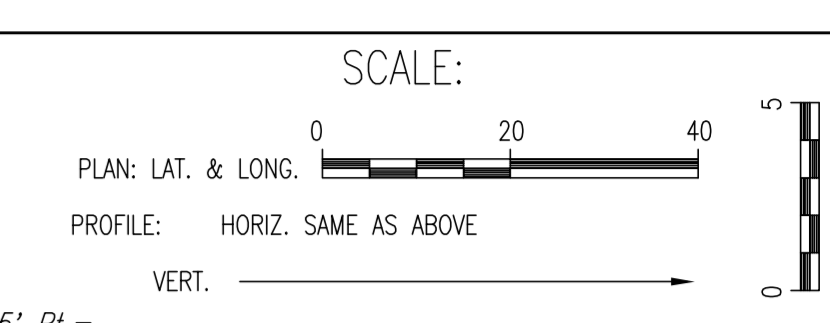
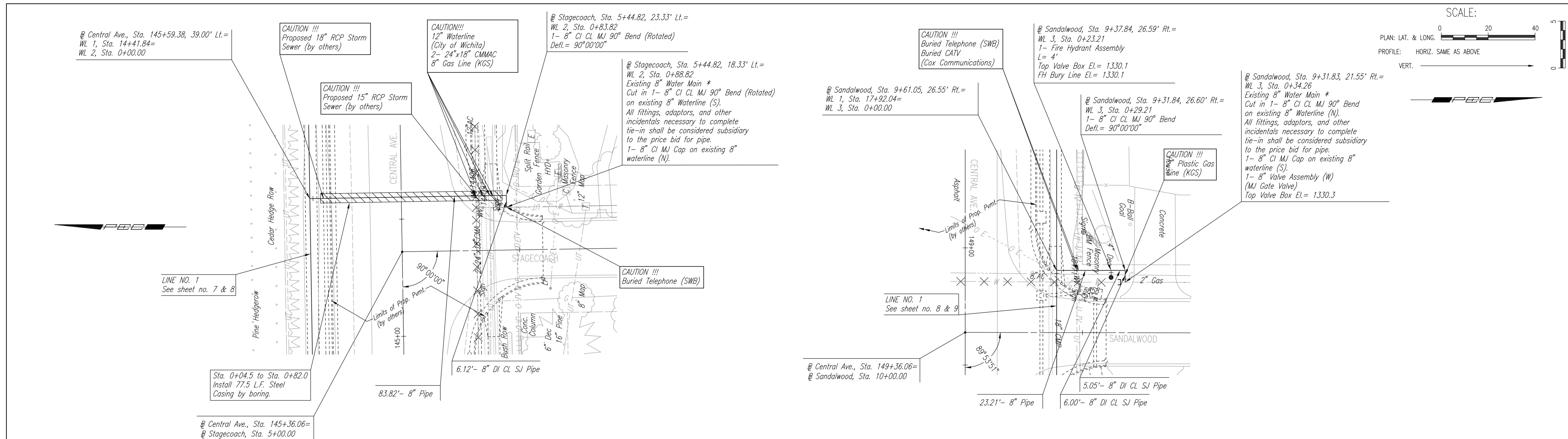
Designed By: MDK
 Drawn By: DAW
 Job No.: 34-01257-042
 Date: June 2001

Sheet 15 of 27

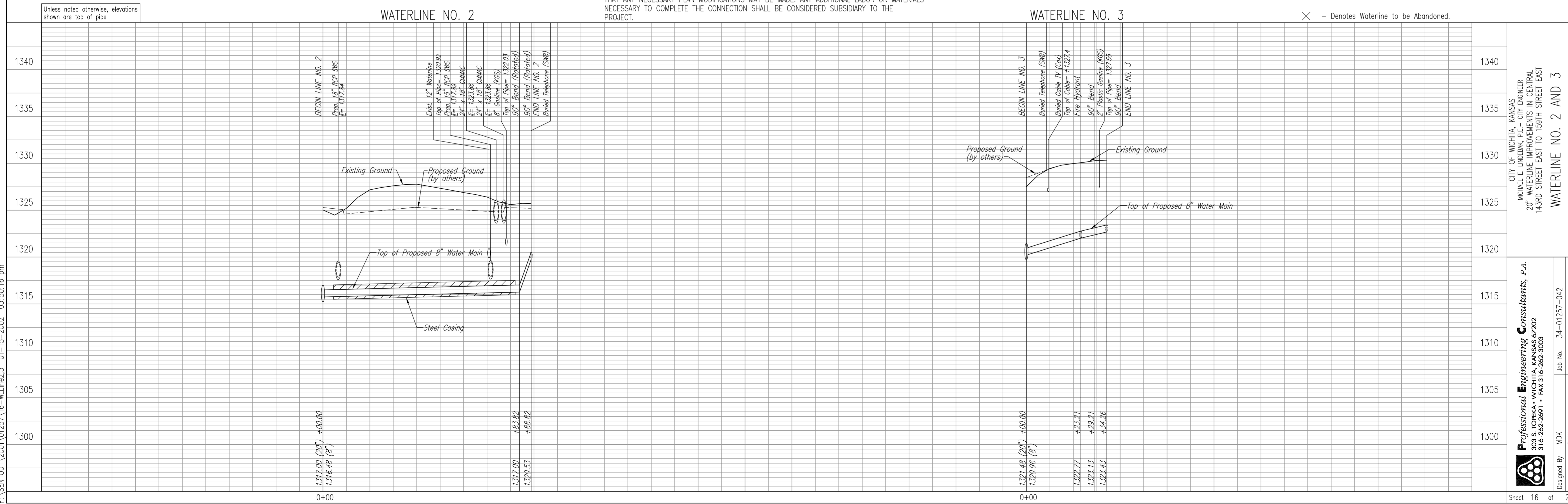
PLAN	CHECKED	CHECKED
BY		
DATE		

PROFILE	CHECKED	CHECKED
BY		
DATE		

DSNR: MDK OPER: DAW SCALE: 1"=20.00
 F:\SENTOUT\2001\01257\16-WLine2_3_01-15-2002_03:50:16.pm



* PRIOR TO BEGINNING CONSTRUCTION, THE CONTRACTOR SHALL EXCAVATE THE EXISTING 8" WATERLINES AT STATION 0+88.82 & 0+34.26 TO VERIFY PIPE SIZE, TYPE, FITTINGS, AND HORIZONTAL AND VERTICAL LOCATION. THE CONTRACTOR SHALL REPORT HIS FINDINGS TO THE ENGINEER SO THAT ANY NECESSARY PLAN MODIFICATIONS MAY BE MADE. ANY ADDITIONAL LABOR OR MATERIALS NECESSARY TO COMPLETE THE CONNECTION SHALL BE CONSIDERED SUBSIDIARY TO THE PROJECT.



CITY OF WICHITA, KANSAS
 MICHAEL E. UNDERHILL, P.E. ENGINEER
 20" WATERLINE IMPROVEMENTS IN CENTRAL
 143RD STREET EAST TO 159TH STREET EAST
 WATERLINE NO. 2 AND 3
 CITY OF WICHITA PROJECT NO. 448-89551

Professional Engineering Consultants, P.A.
 303 S. TOPEKA • WICHITA, KANSAS 67202
 316-262-2691 • FAX 316-262-3003
 Designed By: MDK
 Drawn By: DAW
 Job No.: 34-01257-042
 Date: June 2001