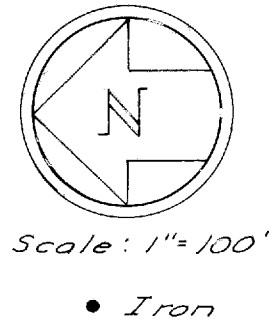
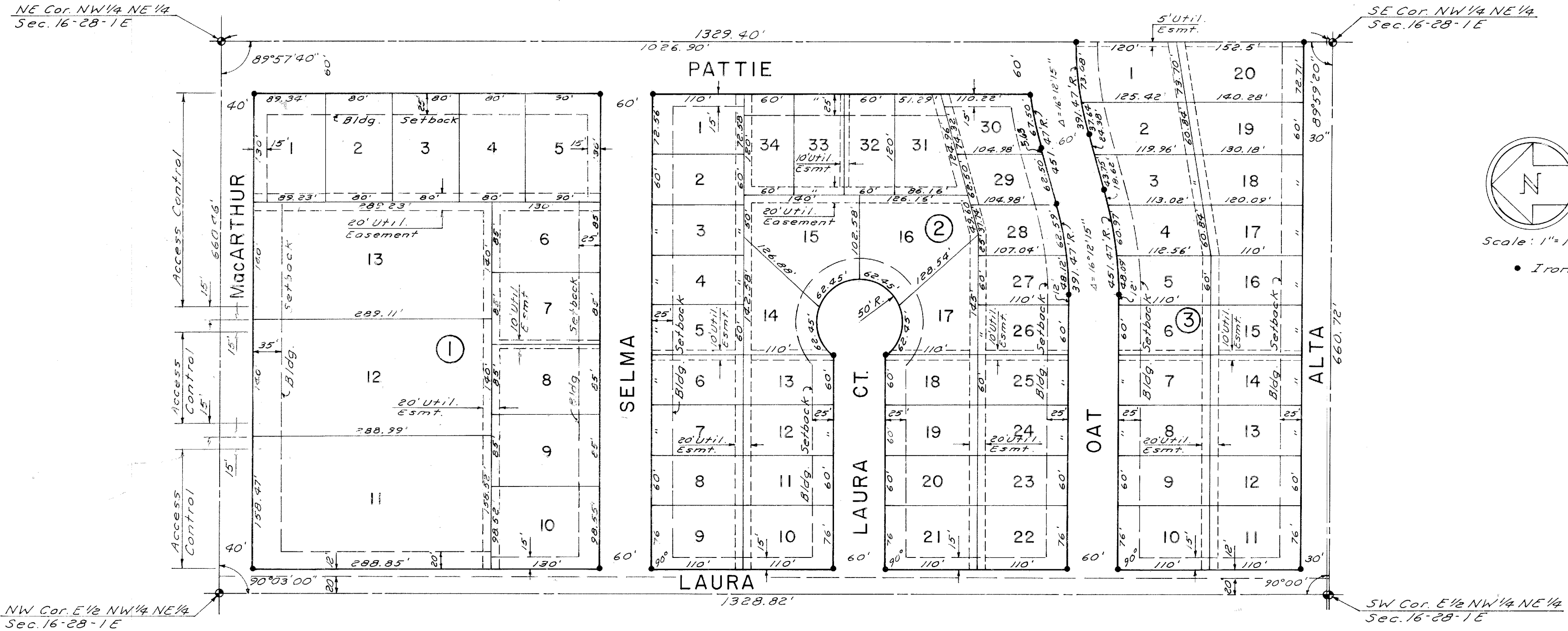


# GALYARDT'S 5TH ADDITION

WICHITA, KANSAS

H-1 5-25



State of Kansas } s.s.  
Sedgwick County } We, Boughman Company, Surveyors in aforesaid county and state do hereby certify that we have surveyed and platted "GALYARDT'S 5TH ADDITION" Wichita, Kansas, and that the accompanying plat is a true and correct exhibit of the property surveyed, described as the E 1/2 of the NW 1/4 of the NE 1/4 of Section 16, T28 S, R1 E, Sedgwick County, Kansas, except the west 20 feet thereof dedicated for street.  
Date 2/2/77

William L. Korber  
Surveyor

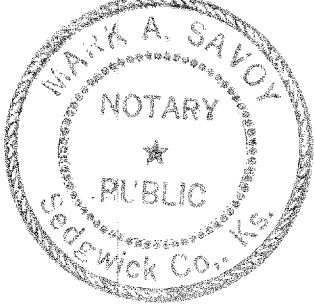


Know all men by these presents that we, the undersigned, have caused the land described in the surveyors certificate to be platted into lots, blocks and streets to be known as "GALYARDT'S 5TH ADDITION" Wichita, Kansas. The easements are hereby granted as indicated for the construction and maintenance of public utilities. The streets are hereby dedicated to and for the use of the public. All abutters rights of access to or from MacArthur over and across the north line of Block 1 are hereby granted to the City of Wichita, except, however, that Block 1 shall have access to MacArthur at two locations described as the east 15 feet of Lot 11, the west 15 feet of Lot 12, the east 15 feet of Lot 12 and the west 15 feet of Lot 13.

Vernon E. Galyardt  
Vernon E. Galyardt

State of Kansas } s.s.  
Sedgwick County } Be it remembered that on this 17th day of December, 1976, before me a notary public in aforesaid county and state came Vernon E. Galyardt, to me known to be the same person who executed the foregoing instrument of writing and duly acknowledged the execution of the same. In testimony whereof I have hereunto set my hand and affixed my notarial seal the day and year above written.

My Commission Expires 4/14/80  
Notary Public



This plat of "GALYARDT'S 5TH ADDITION", Wichita, Kansas, has been submitted to and approved by the Wichita-Sedgwick County Metropolitan Area Planning Commission, Wichita, Kansas. Dated this 9th day of December, 1976.

Wichita-Sedgwick County Metropolitan Area Planning Commission

William L. Goebel  
Chairman  
Robert A. Lakin  
Secretary

This plat approved and all dedications shown hereon accepted by the Board of City Commissioners, Wichita, Kansas, this 14th day of February, 1978.

Conrad A. Pater  
Vice Mayor  
Donald C. Gristick  
City Clerk

This plat approved and all dedications shown hereon accepted by the Board of County Commissioners, Sedgwick County, Kansas, this 21st day of November, 1978.

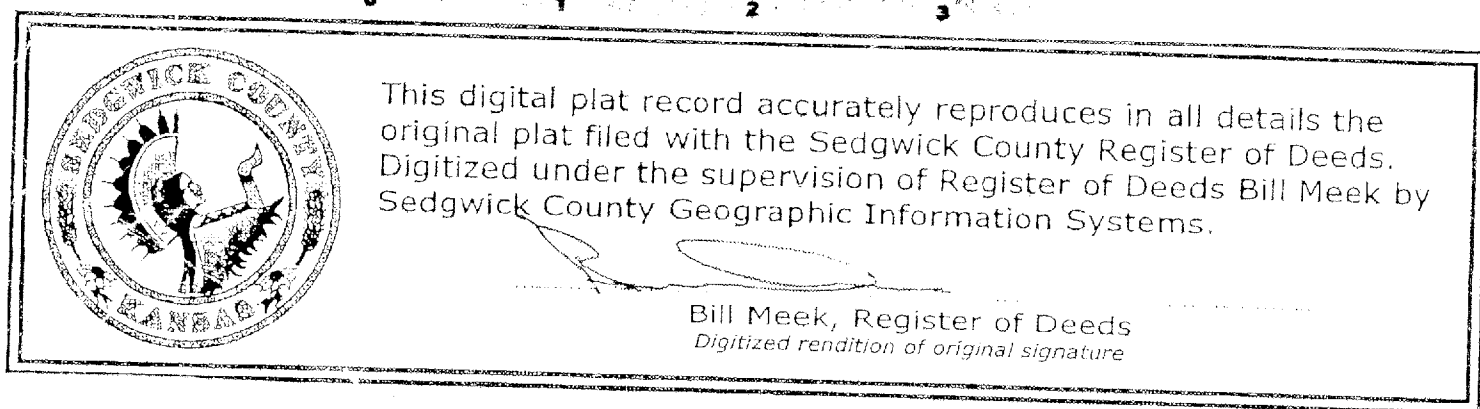
Everett Patrick  
Chairman  
Commissioner  
Commissioner  
Stephen D. Wright  
County Clerk

Entered on transfer record this 27 day of Nov. 1978

Stephen D. Wright  
County Clerk

State of Kansas } s.s.  
Sedgwick County } This is to certify that this plat has been filed for record in the Office of the Register of Deeds this 21st day of November, 1978, at 11:30 o'clock P. M.; and is duly recorded.

Bette M. McCort  
Register of Deeds  
Pat Kottler  
Deputy



This digital plat record accurately reproduces in all details the original plat filed with the Sedgwick County Register of Deeds. Digitized under the supervision of Register of Deeds Bill Meek by Sedgwick County Geographic Information Systems.

Bill Meek, Register of Deeds  
Digitized rendition of original signature

H-1 5-25