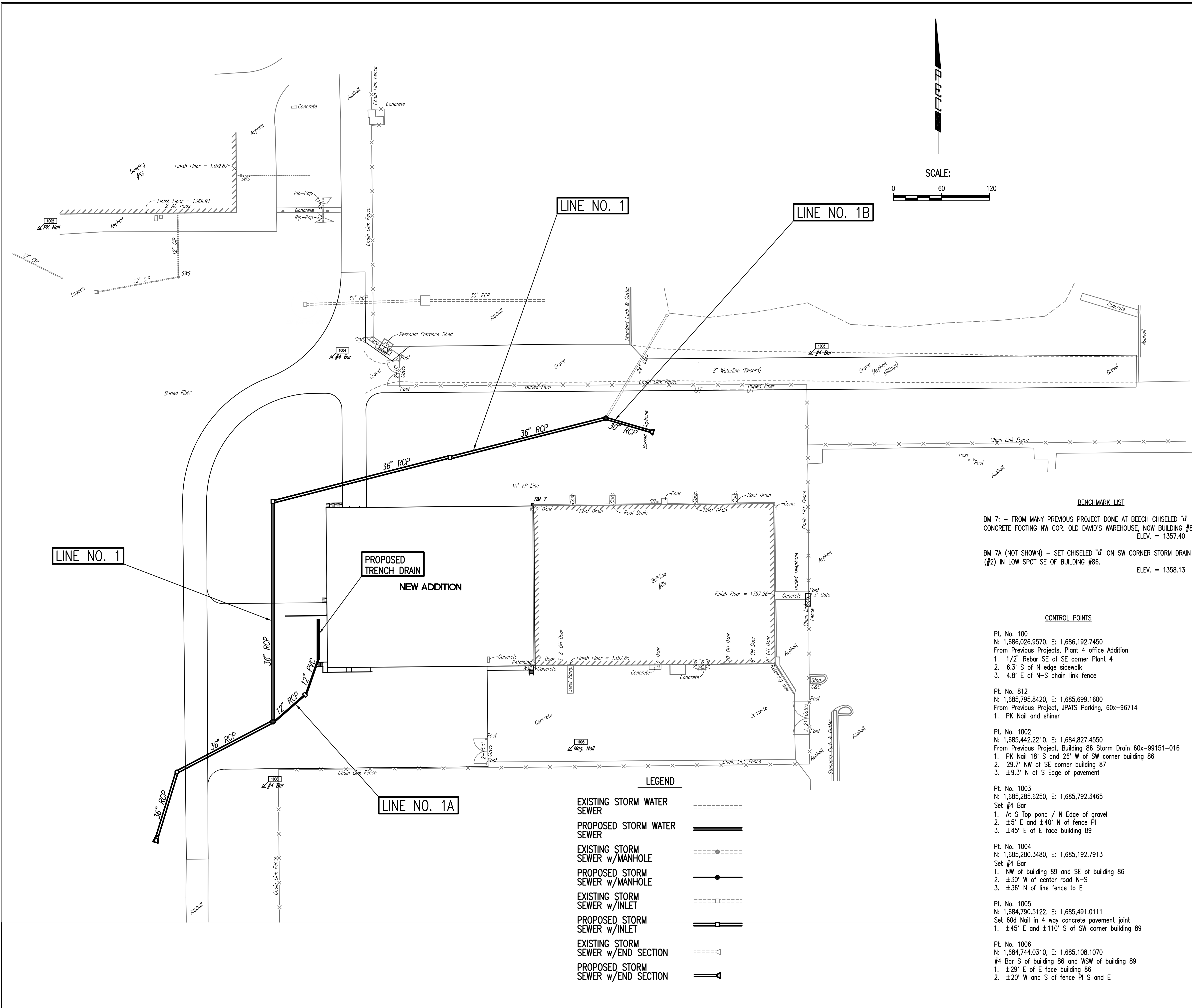
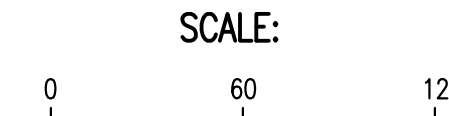


GENERAL NOTES

- ALL CONSTRUCTION AND MATERIALS TO COMPLY WITH CITY OF WICHITA SPECIFICATIONS AND STANDARDS.
- ALL ELEVATIONS SHOWN ARE BASED ON USGS DATUM.
- AT LEAST 72 HOURS PRIOR TO BEGINNING EXCAVATION (EXCLUDING WEEKENDS AND HOLIDAYS), THE CONTRACTOR SHALL CONTACT THE KANSAS ONE-CALL SYSTEM, A UTILITY LOCATION SERVICE, AT (316) 687-2470 TO REQUEST THE LOCAL UTILITY COMPANIES MARK ANY EXISTING LINES WITHIN THE PROJECT AREA.
- UNDERGROUND UTILITY SERVICE LINES AND OVERHEAD UTILITY POLE LINES ARE TO BE ADJUSTED AS NECESSARY BY OTHERS PRIOR TO CONSTRUCTION UNLESS THE PLANS SPECIFICALLY CALL FOR THEIR ADJUSTMENT BY THE CONTRACTOR OR UNLESS THE PLANS SPECIFICALLY IDENTIFY A UTILITY TO BE ADJUSTED BY ITS OWNER DURING CONSTRUCTION. EXISTING UTILITIES AND THEIR LOCATIONS, AS SHOWN ON THE PLANS, REPRESENT THE BEST INFORMATION OBTAINABLE FOR THE DESIGN. THE CONTRACTOR WILL BE REQUIRED TO WORK AROUND EXISTING UTILITIES WITHIN THE RIGHT-OF-WAY WHICH DO NOT CONFLICT WITH PROPOSED CONSTRUCTION.
- THE CONTRACTOR SHALL BE RESPONSIBLE FOR PRESERVING PROPERTY IRONS. THE CONTRACTOR WILL BE REQUIRED TO RE-ESTABLISH ANY PROPERTY IRONS WHICH ARE DAMAGED OR DESTROYED BY HIS CONSTRUCTION OPERATIONS. SUCH IRONS SHALL BE RE-ESTABLISHED BY A LICENSED LAND SURVEYOR IN ACCORDANCE WITH STATE LAWS.
- RUBBLE FROM THE REMOVAL OF MISCELLANEOUS STRUCTURES INCLUDING ANY TREES REMOVED, TREE TRIMMINGS, AND EXCESS EXCAVATION WHICH IS TO BE WASTED SHALL BE DISPOSED OF ON SITES PROVIDED BY THE CONTRACTOR. THESE SITES SHALL ALSO BE APPROVED BY THE ENGINEER AS TO SUITABILITY, APPEARANCE, AND SITE LOCATION. LOCATIONS THAT, IN THE OPINION OF THE ENGINEER, WILL LEAVE AN UNSIGHTLY APPEARANCE WILL NOT BE APPROVED. ALL DISPOSAL SITES MUST BE APPROVED BY THE KANSAS DEPARTMENT OF HEALTH AND ENVIRONMENT. MATERIAL EITHER STOCKPILED OR DISPOSED OF IN A FLOOD PLAIN WILL REQUIRE A KANSAS STATE BOARD OF AGRICULTURE PERMIT. ANY MATERIAL DUMPED IN WATERS OF THE UNITED STATES OR WETLANDS IS SUBJECT TO U.S. CORPS. OF ENGINEERS PERMITTING REGULATIONS. ANY MATERIAL BURIED OR STOCKPILED BEYOND APPROVED CONSTRUCTION LIMITS MAY REQUIRE ARCHAEOLOGICAL INVESTIGATIONS UNLESS BURIED IN A PREVIOUSLY APPROVED DISPOSAL LOCATION.
- THE CONTRACTOR SHALL PREVENT ANY CONSTRUCTION DEBRIS FROM ENTERING THE EXISTING STORM WATER SYSTEM DURING CONSTRUCTION.
- ALL APPROVED EXCESS EXCAVATION WHICH IS TO BE WASTED SHALL BE HAULED OFF-SITE AT NO ADDITIONAL COST TO THE OWNER.
- CONTRACTOR IS REQUIRED TO MAINTAIN CONTINUOUS FLOW IN EXISTING STORM WATER MAINS AT ALL TIMES.
- ALL MANHOLE AND INLET TOPS SHALL BE ADJUSTED TO BE FLUSH WITH FINAL PAVEMENT GRADES.
- FOR THIS PROJECT, ALL STORM SEWER LINE EXCAVATION SHALL BE SAND FILLED AND FLUSHED (JETTED AND VIBRATED) WITH WATER PER THE REQUIREMENTS LISTED IN THE STANDARD SPECIFICATIONS FOR THE CITY OF WICHITA, UNLESS FLOWABLE FILL OR OTHER IMPROVED BACKFILL MATERIAL IS OTHERWISE SPECIFIED.



BENCHMARK LIST

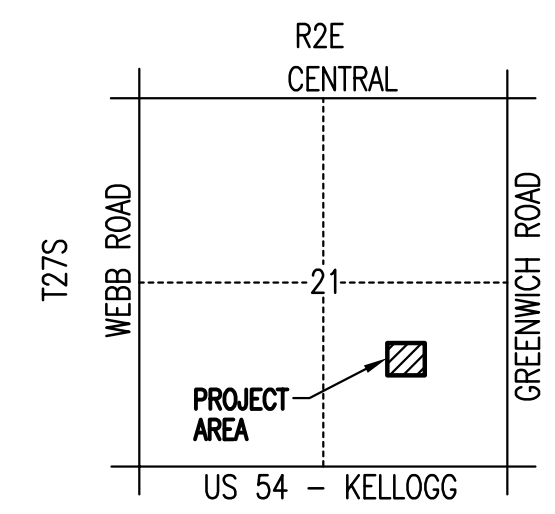
- BM 7: - FROM MANY PREVIOUS PROJECT DONE AT BEECH CHISELED "d" ON CONCRETE FOOTING NW COR. OLD DAVID'S WAREHOUSE, NOW BUILDING #89. ELEV. = 1357.40
- BM 7A (NOT SHOWN) - SET CHISELED "d" ON SW CORNER STORM DRAIN AREA INLET (#2) IN LOW SPOT SE OF BUILDING #86. ELEV. = 1358.13

CONTROL POINTS

- Pt. No. 100  
N: 1,686,026.9570, E: 1,686,192.7450  
From Previous Projects, Plant 4 office Addition  
1. 1/2" Rebar SE of SE corner Plant 4  
2. 6.3' S of N edge sidewalk  
3. 4.8' E of N-S chain link fence
- Pt. No. 812  
N: 1,685,795.8420, E: 1,685,699.1600  
From Previous Project, JPATS Parking, 60x-96714  
1. PK Nail and shiner
- Pt. No. 1002  
N: 1,685,442.2210, E: 1,684,827.4550  
From Previous Project, Building 86 Storm Drain 60x-99151-016  
1. PK Nail 18' S and 26' W of SW corner building 86  
2. 29.7' NW of SE corner building 87  
3. ±9.3' N of S Edge of pavement
- Pt. No. 1003  
N: 1,685,285.6250, E: 1,685,792.3465  
Set #4 Bar  
1. At S Top pond / N Edge of gravel  
2. ±5' E and ±40' N of fence PI  
3. ±45' E of E face building 89
- Pt. No. 1004  
N: 1,685,280.3480, E: 1,685,192.7913  
Set #4 Bar  
1. NW of building 89 and SE of building 86  
2. ±30' W of center road N-S  
3. ±36' N of line fence to E
- Pt. No. 1005  
N: 1,684,790.5122, E: 1,685,491.0111  
Set 60d Nail in 4 way concrete pavement joint  
1. ±45' E and ±110' S of SW corner building 89
- Pt. No. 1006  
N: 1,684,744.0310, E: 1,685,108.1070  
#4 Bar S of building 86 and WSW of building 89  
1. ±29' E of E face building 86  
2. ±20' W and S of fence PI S and E

LEGEND

- EXISTING STORM WATER SEWER (dashed line)
- PROPOSED STORM WATER SEWER (solid line)
- EXISTING STORM SEWER w/MANHOLE (dashed line with circle)
- PROPOSED STORM SEWER w/MANHOLE (solid line with circle)
- EXISTING STORM SEWER w/INLET (dashed line with square)
- PROPOSED STORM SEWER w/INLET (solid line with square)
- EXISTING STORM SEWER w/END SECTION (dashed line with triangle)
- PROPOSED STORM SEWER w/END SECTION (solid line with triangle)



No.	Revision	By	Date
<b>HAWKER BEECHCRAFT CORPORATION</b> <b>WAREHOUSE B89</b> <b>KEY MAP AND GENERAL NOTES</b> JAMES L. ARMOUR, P.E. - CITY ENGINEER CITY OF WICHITA PRIVATE PROJECT NO. 1909 PPS (607861) <b>Professional Engineering Consultants, P.A.</b> 303 S. TOPKA • WICHITA, KANSAS 67202 316-262-2691 • FAX 316-262-3003			
Designed by	RRY	Job No.	35-08025
Drawn by	SAW	Date	August 2008
			Sht. C.4.2 of 12