

THE LDF COMPANIES
OFFICE & WAREHOUSE
ADDITION AND REMODEL

EROS. CONTROL

SHEET TITLE
09492
PROJECT NUMBER

GLA / RKO / GJA
DESIGNED / DRAWN / CHECKED

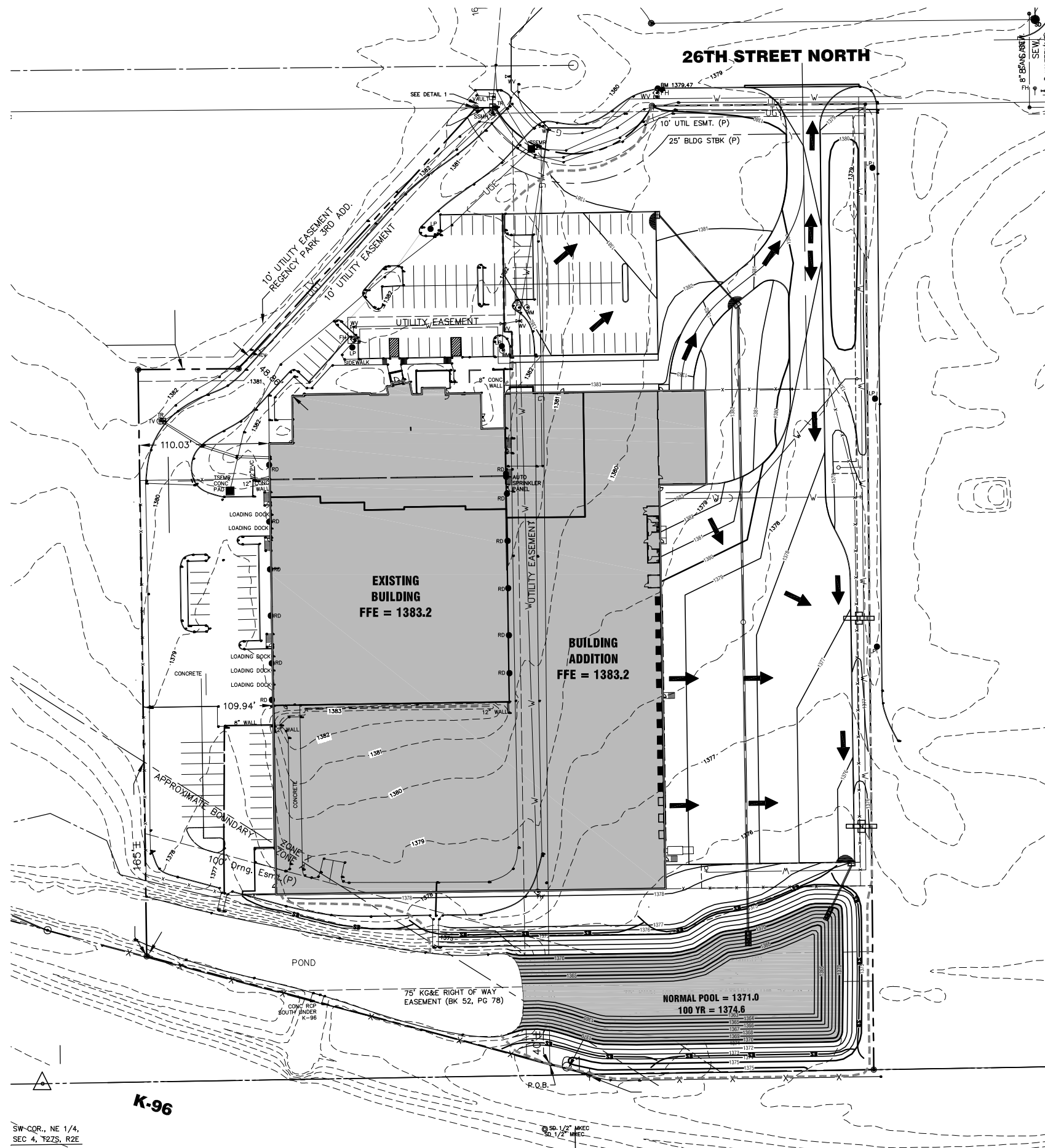
ISSUED
October 2009

REVISED

SHEET NO.
2 of 7

EROSION CONTROL NOTES

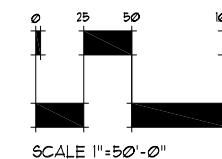
1. EROSION CONTROL IS TO MEET ALL FEDERAL, STATE, COUNTY, AND LOCAL STANDARDS.
2. CONTRACTOR SHALL PROVIDE AND PRESERVE EROSION PROTECTION THROUGHOUT PROJECT CONSTRUCTION. THE PLAN PROVIDED HERE IS FOR FINAL PROTECTION. VARIOUS PHASES OF THIS PLAN SHALL BE IMPLEMENTED OR MODIFIED TO CONTROL EROSION. MODIFICATIONS OF THE PLAN SHALL BE APPROVED BY THE OWNER'S REPRESENTATIVE.
3. SEEDING AREAS SHALL BE PREPARED FOR PLANTING WITH COMMON AGRICULTURAL TECHNIQUES. ALL RESERVE AREAS SHALL BE FINE GRADED USING SMALL EQUIPMENT. REMOVE EXISTING GRASS, VEGETATION, AND TURF. DO NOT MIX INTO SURFACE SOIL. LOOSEN SOIL TO A DEPTH OF AT LEAST 6". GRADE AREAS TO A SMOOTH UNIFORM SURFACE PLANE. ROLL, RAKE, AND REMOVE RIDGES AND FILL DEPRESSIONS. THE SURFACE SHALL BE FREE FROM STICKS, SMALL STONES, AND OTHER EXTRANEOUS MATERIALS. APPROVE WITH OWNER'S REPRESENTATIVE BEFORE PLANTING.
4. CONTRACTOR IS RESPONSIBLE FOR MAINTAINING AND IMPLEMENTING ALL EROSION CONTROL.
5. AS A TEMPORARY MEASURE THE CONTRACTOR SHALL SEED WHEN REQUIRED, ALL DISTURBED AREAS AS FOLLOWS:
ANNUAL RYE @ 200 LBS./ACRE
10-20-10 @ 200 LBS./ACRE
6. ALL SEED SHALL BE DISTRIBUTED WITH AN ACCEPTABLE DRILL INTENDED FOR SUCH OPERATIONS, OR OTHER EQUIPMENT APPROVED BY THE OWNER'S REPRESENTATIVE. SEEDING DEPTH SHALL BE 1/4".
7. BROADCASTING WILL BE ALLOWED IN INACCESSIBLE AREAS TO THE DRILL ONLY AFTER GROUND IS DISTURBED TO CREATE A SUITABLE SEEDBED. SEEDING DEPTH SHALL BE 1/4".
8. ALL SEEDED AREAS SHALL BE IMMEDIATELY MULCHED W/ CLEAN PRAIRIE HAY AT 2 TONS/ACRE. ANCHOR MULCH BY CRIMPING INTO TOPSOIL WITH SUITABLE MECHANICAL EQUIPMENT.



LEGEND

- 1359 --- - EXISTING CONTOURS
- 1360 — - PROPOSED CONTOURS
- - - - - LIMITS OF GRADING
- ← - FLOW ARROW
- SB — - SILT BARRIER
- ◐ - CURB INLET PROTECTION
- ◑ - INLET PROTECTION
- ⊕ - TEMPORARY SWALE PROTECTION

EROSION CONTROL
SCALE: 1" = 50'-0"



SW-COR., NE 1/4,
SEC 4, T22S, R2E

SB 1/2" MKEC
SD 1/2" MKEC