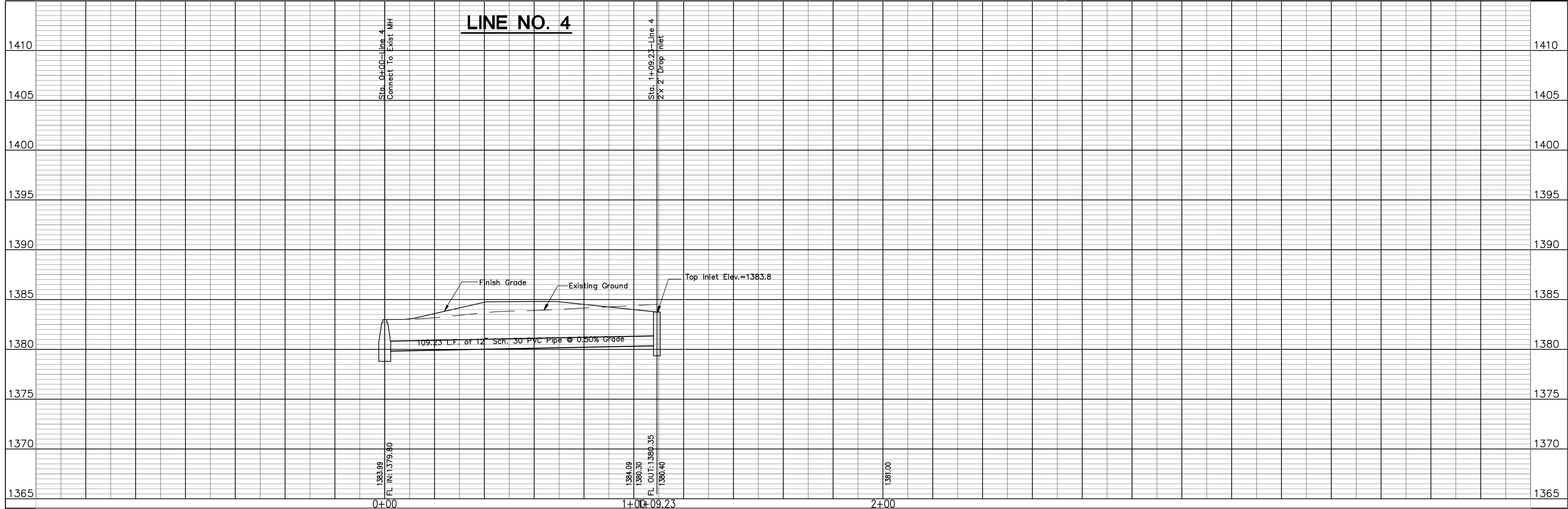


NOTE:
Contractor shall take care to ensure
that existing trees remain in place and
undamaged wherever possible.



No.	Date	By	Approved	Revision

**INWOOD CROSSING
PRIVATE STORM SEWER
STORM SEWER LINE NO. 4
CITY OF WICHITA, KANSAS**
JAMES L. ARMOUR, P.E. - CITY ENGINEER
1955 PPS (607861)

**POE & ASSOCIATES, INC.
CONSULTING ENGINEERS**
5940 E. Central, Suite 200 • Wichita, KS 67209-4242
Phone 316/685-4114 • FAX 316/685-4444

FINAL

Designed By: S. Schmidt
Drawn By: S. Schmidt
Poe Job No.: 1909
Date: February, 2009

Sheet
2 of 12