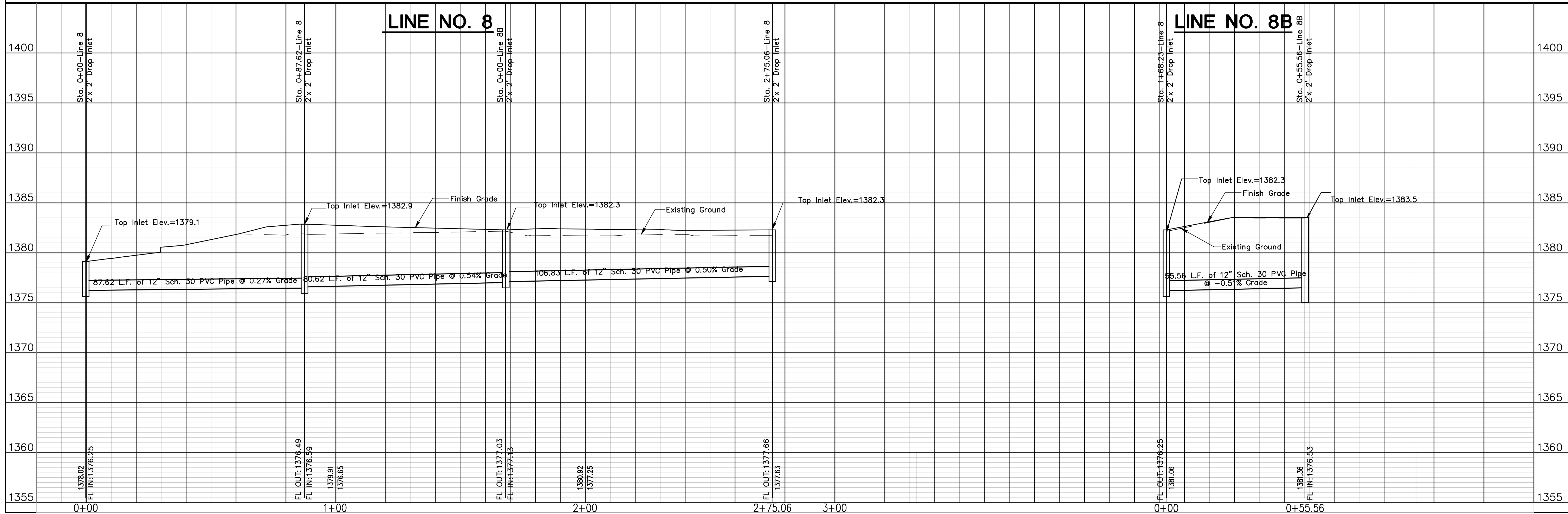
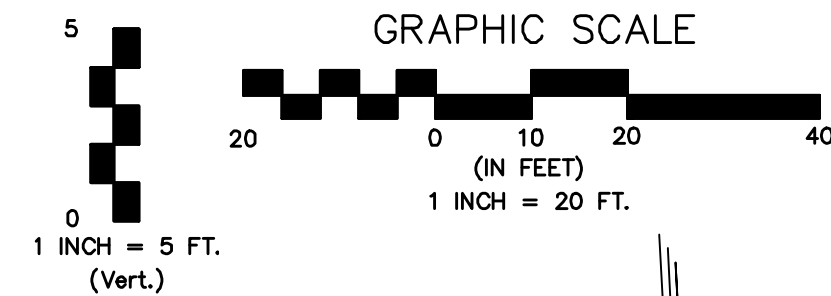


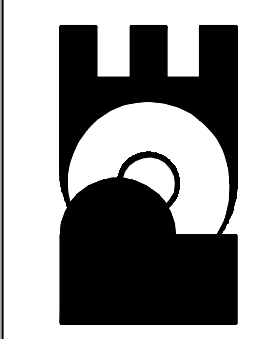
NOTE:
Contractor shall take care to ensure that existing trees remain in place and undamaged wherever possible.



No.	Date	By	Approved	Revision

INWOOD CROSSING
PRIVATE STORM SEWER
STORM SEWER LINE NO. 8
CITY OF WICHITA, KANSAS
JAMES L. ARMOUR, P.E. - CITY ENGINEER
1955 PPS (607861)

POE & ASSOCIATES, INC.
CONSULTING ENGINEERS
5940 E. Central, Suite 200 - Wichita, KS 67208-4242
Phone 316/685-4114 - FAX 316/685-4444



FINAL
Designed By: S. Schmidt
Drawn By: S. Schmidt
Poe Job No.: 1909
Date: February, 2009
Sheet
4 of 12