

FINAL PLAT OF KILLARNEY PLAZA SECOND ADDITION

AN ADDITION TO WICHITA, SEDGWICK COUNTY, KANSAS

R = 206.50'
Δ = 40° 18' 12"
L = 145.26'
Chd. = 142.28'
Brg. = N.69°09'06"E.

Lot	Block	City Datum	Mean Sea Level
3	I	192.5	1379.9
4	I	192.5	1379.9
6-II	I	195.0	1382.4

BENCH MARKS:

- B.M. #1 City Disc in S.W. cor. of RCB under Rock Road + 50' W of Centerline 34th St. N. Elev. = 200.18
- B.M. #2 City Disc in Retaining Wall at NE cor. of RCB under Rock Road + 100' S. of 35th St. N. Elev. = 198.29
- B.M. #3 "□" cut on top curb at W. end of N.M. Return at 36th St. N. & Inwood. Elev. = 183.53

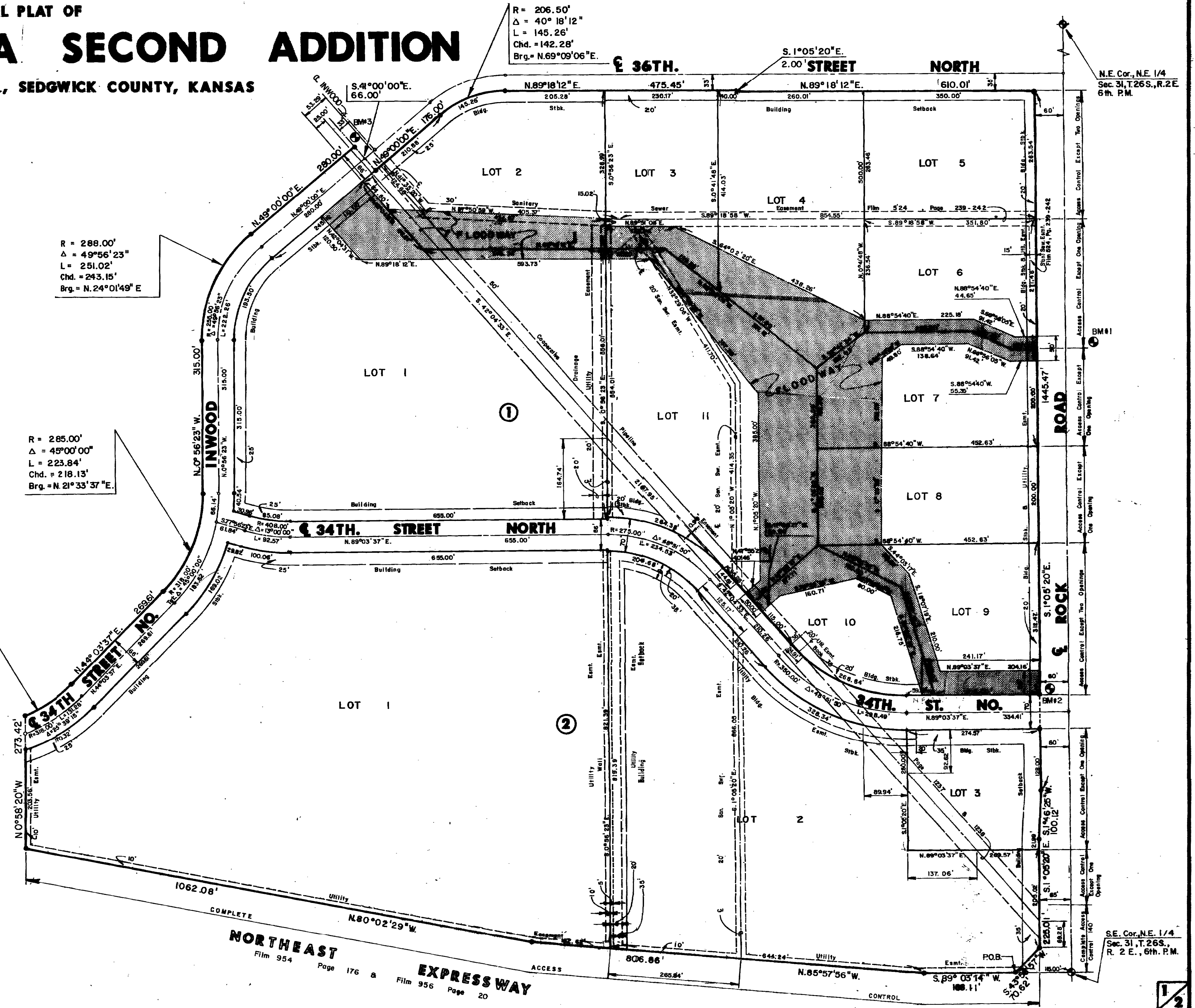
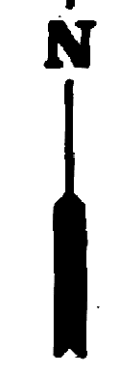
Scale: 1" = 100'

▨ = Floodway
P.O.B. = Point of Beginning

R = 288.00'
Δ = 49°56'23"
L = 251.02'
Chd. = 243.15'
Brg. = N.24°01'49"E

R = 285.00'
Δ = 45°00'00"
L = 223.84'
Chd. = 218.13'
Brg. = N.21°33'37"E

R = 285.00'
Δ = 23°39'15"
L = 117.66'
Chd. = 116.83'
Brg. = N.55°53'14"E



N.E. Cor., N.E. 1/4
Sec. 31, T.26S., R.2E.
6th. P.M.

S.E. Cor., N.E. 1/4
Sec. 31, T.26S.,
R. 2 E., 6th. P.M.

NORTHEAST EXPRESSWAY
Film 954 Page 176 & Film 956 Page 20