

NOTE:
EROSION CONTROL ADD ALT.
INSTALL SCOUR STOP INSTEAD
OF RIP-RAP SEE SHEET 29

AS BUILT PLANS: 12.6.10

INSPECTED BY: MIKE VANDECREEK, MKEC
ENGINEERING CONSULTANTS, INC

CONSTRUCTED BY: DULING CONSTRUCTION
CO., INC.

STA. 11+81.7, LINE 2
CONSTRUCT 2-DOUBLE DROP INLET
INLET TOP=+351.75-1351.79 A.B.
PROVIDE SEDIMENT BARRIER

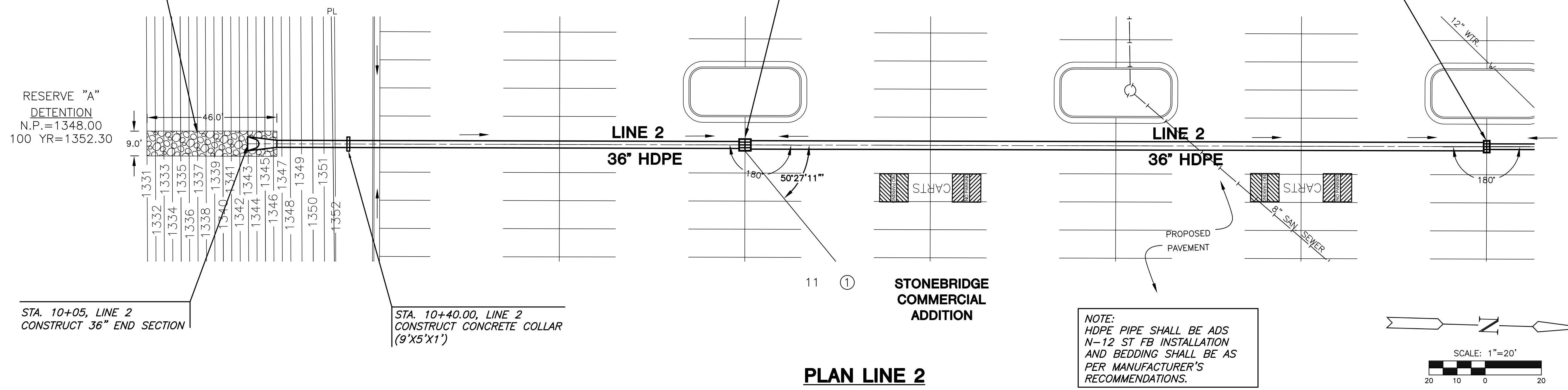
STA. 14+45.7, LINE 2
CONSTRUCT DOUBLE DROP INLET
INLET TOP=+351.75-1351.72 A.B.
PROVIDE SEDIMENT BARRIER

INSTALL 46 S.Y. OF
LIGHT STONE RIP-RAP
w/GROUTED STONE
TOEWALL (9'x2'x4')

RESERVE "A"
DETENTION
N.P.=1348.00
100 YR=1352.30

STA. 10+05, LINE 2
CONSTRUCT 36" END SECTION

STA. 10+40.00, LINE 2
CONSTRUCT CONCRETE COLLAR
(9'X5'X1')



NOTE:
HDPE PIPE SHALL BE ADS
N-12 ST FB INSTALLATION
AND BEDDING SHALL BE AS
PER MANUFACTURER'S
RECOMMENDATIONS.

PLAN LINE 2

PROFILE LINE 2

SCALE: HORIZ. 1"=20'
SCALE: VERT. 1"=5'

