

CONTROL POINTS

Point	North	East	Description
CP1	18679.265	20023.893	C.O.W. Thimble
CP2	18682.014	20653.898	C.O.W. Thimble
CP3	18712.271	20713.849	Rebar with "SRB" Cap
CP4	19342.682	20382.955	C.O.W. Thimble
CP5	21328.278	20711.547	C.O.W. Thimble
CP6	21327.893	20332.080	C.O.W. Thimble
CP7	21327.486	18781.050	C.O.W. Thimble
CP8	21297.700	19631.988	Rebar with "Savoy" Cap
CP9	21297.808	20024.921	Rebar with "Savoy" Cap
CP10	20990.249	19987.006	Rebar with "Savoy" Cap
CP11	20667.787	19947.117	Rebar with "Savoy" Cap
CP12	20644.787	19947.123	Rebar with "Savoy" Cap
CP13	20644.791	19962.153	Rebar with "Savoy" Cap
CP14	20041.791	19962.687	Rebar with "Savoy" Cap
CP15	20041.701	19634.640	Rebar with "Savoy" Cap
CP16	19986.672	19634.217	Rebar with "Savoy" Cap
CP17	19736.673	19635.026	Rebar with "Savoy" Cap

Benchmark #1: R.R. Spike in Power Pole
North Side of 11th St. N. & Vacated Santa Fe
Elevation = 1304.53 NAVD 88
N: 20034.095
E: 19654.606

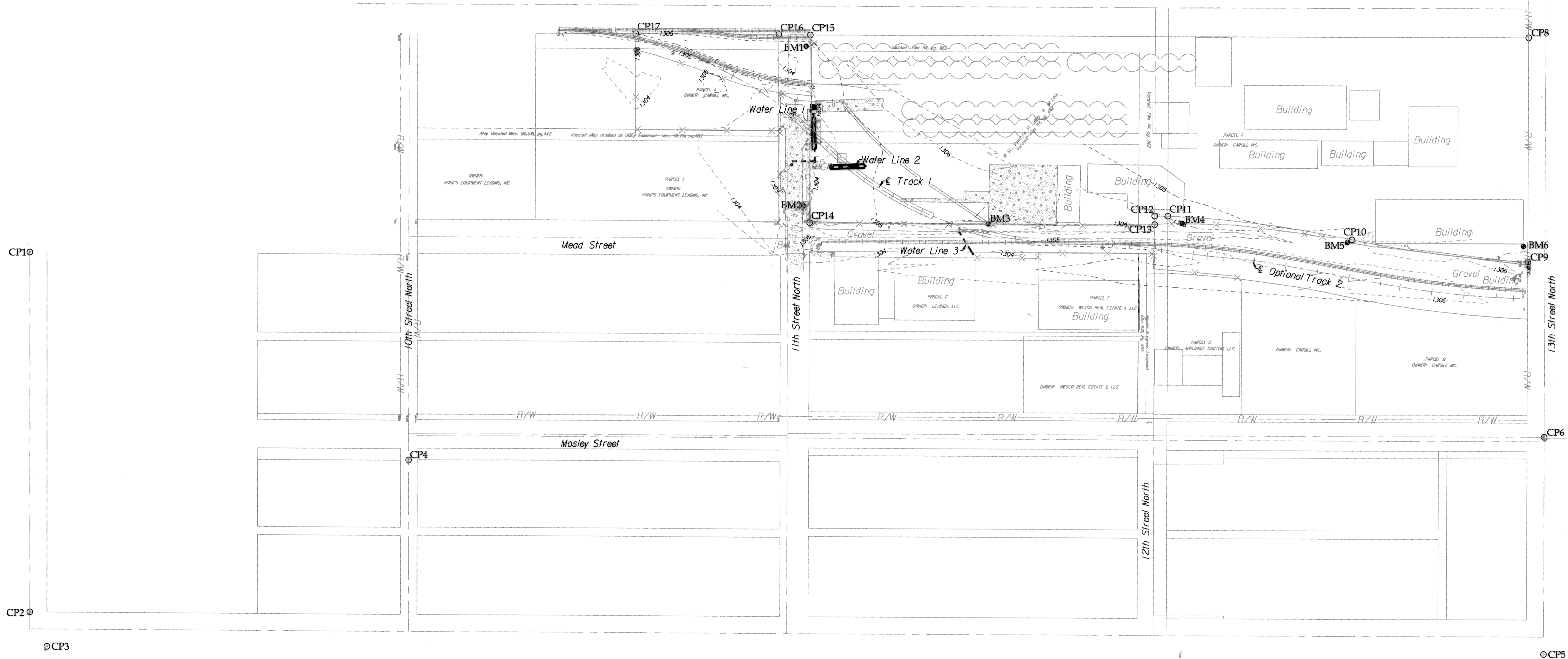
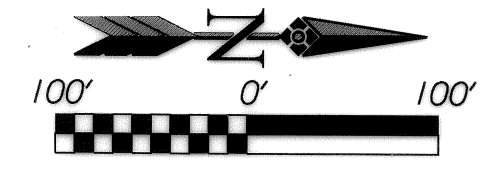
Benchmark #2: Square Cut Souteast corner of
Water Meter Vault North back of curb of 11th St. N.
& 54.7' West of Centerline of Mead Avenue
Elevation = 1303.20 NAVD 88
N: 20030.828
E: 19932.989

Benchmark #3: Suare Cut Southeast corner of concrete
drive West side of Mead Avenue, 125' South of
Maintenance Building.
Elevation = 1304.73 NAVD 88
N: 20354.262
E: 19962.857

Benchmark #4: Square Cut Southeast corner of parking
25' East of Northeast corner of Building on the North side
of vacated 12 Street & Mead Avenue.
Elevation = 1306.17 NAVD 88
N: 20693.034
E: 19959.271

Benchmark #5: Square Cut Southeast corner of concrete slab
50' South of the Southeast corner of Building #715.
Elevation = 1304.08 NAVD 88
N: 20982.150
E: 19991.986

Benchmark #6: Square Cut on concrete slab at Northeast corner
of Building #175
Elevation = 1304.90 NAVD 88
N: 21290.174
E: 19997.705



Rev.	Date	By	Description

Designator: BLB
 Designer: JCF
 Date: May 28, 2010
 Reviser: No.

AMERITRACK WEST, INC.
 12469 SW 15th
 Benton, KS 67017
 O: 316-778-2215
 F: 316-778-1204

Client:
 HORIZON MILLINS
 WICHITA, KANSAS
 JAMES ARMOUR, P.E. - CITY ENGINEER
 ES:38 P:00 OCA No. 607853

CONTROL POINT MAP

Drawing No.
C101

Project No.
465