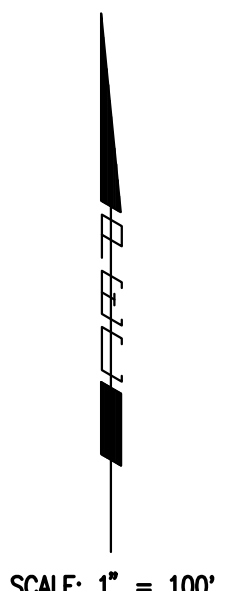
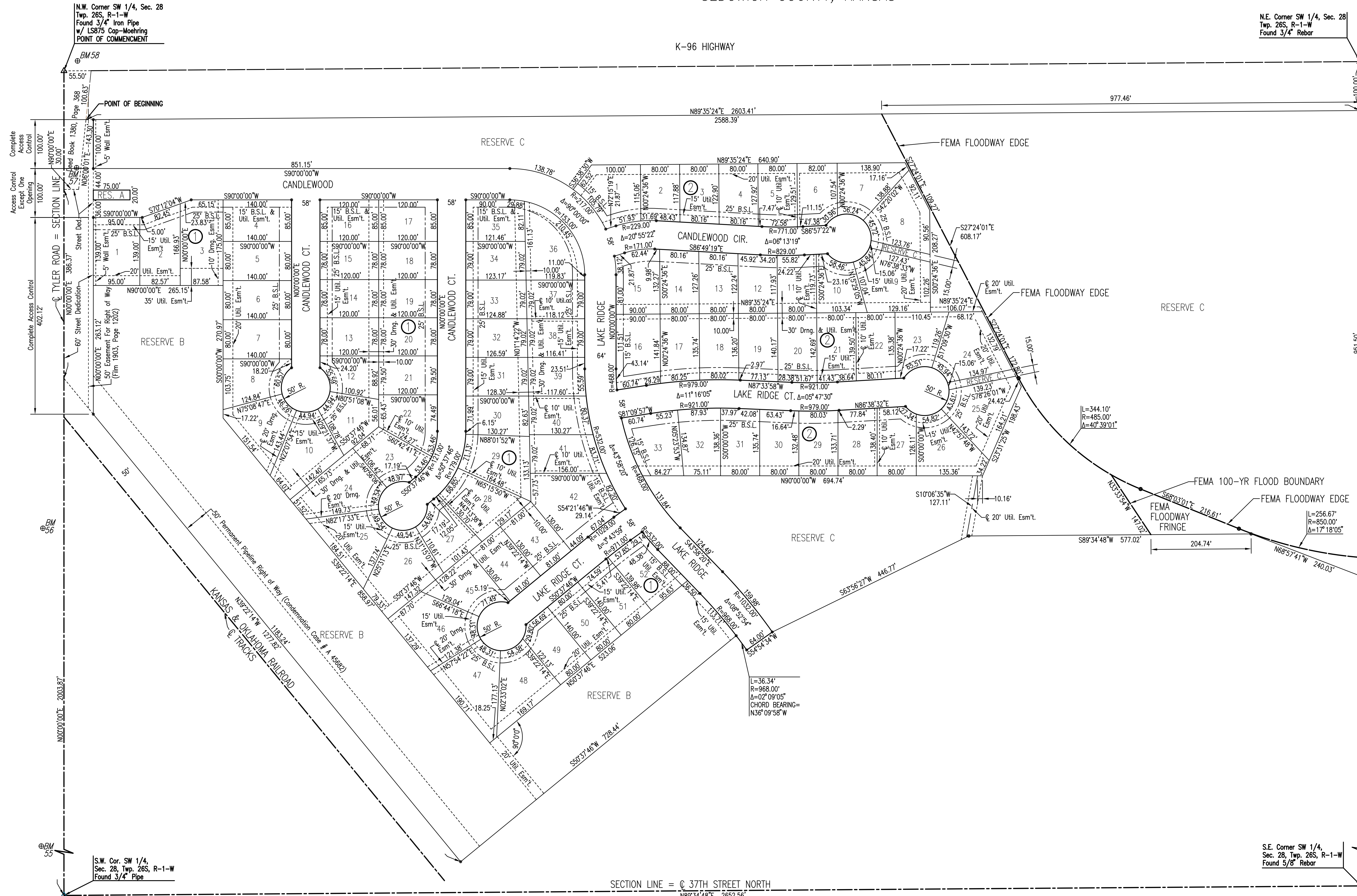


# AVALON PARK 3RD

AN ADDITION TO WICHITA,  
SEDGWICK COUNTY, KANSAS

K-96 HIGHWAY



- BENCHMARKS:**
- BM #55 - R.R. Spike in E. face Power Pole W. side Tyler Rd. at House #3915  
Elev.=1340.28 N.G.V.D.  
Elev.=152.88 CITY DATUM
  - BM #56 - R.R. Spike in E. face Power Pole W. side Tyler Rd. 2nd Pole S. of R.R. Tracks  
Elev.=1339.98 N.G.V.D.  
Elev.=152.58 CITY DATUM
  - BM #57 - Chiseled "d" on S. end RCP at entrance to "the edge" Paintball Adventures, E. side Tyler Rd. between R.R. Tracks and K96 Highway.  
Elev.=1340.74 N.G.V.D.  
Elev.=153.34 CITY DATUM
  - BM #58 - Chiseled "d" on S. end concrete headwall, E. end RCB under Tyler Rd. at 1/2 mile line, S. of K96 Highway.  
Elev.=1342.03 N.G.V.D.  
Elev.=154.63 CITY DATUM

- LEGEND**
- △ = SECTION CORNER
  - ⊕ = BENCH MARK/VERTICAL CONTROL POINT
  - = 1/2" REBAR W/PEC CAP UNLESS OTHERWISE NOTED
  - = NO MONUMENT SET

SECTION LINE = C 37TH STREET NORTH  
N89°34'48"E 2652.56'

DSNR: OPER: JIS SCALE: 1"=100.00  
 Q: Z003\03601\DD\03601.FINAL PLAT 01-24-2005 10:14:42 am