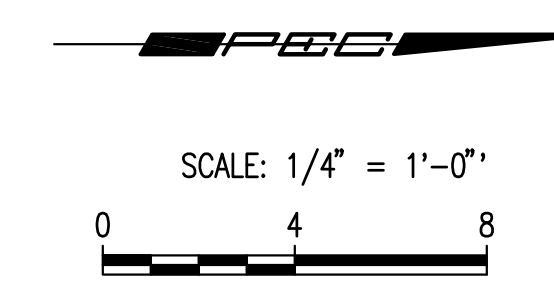
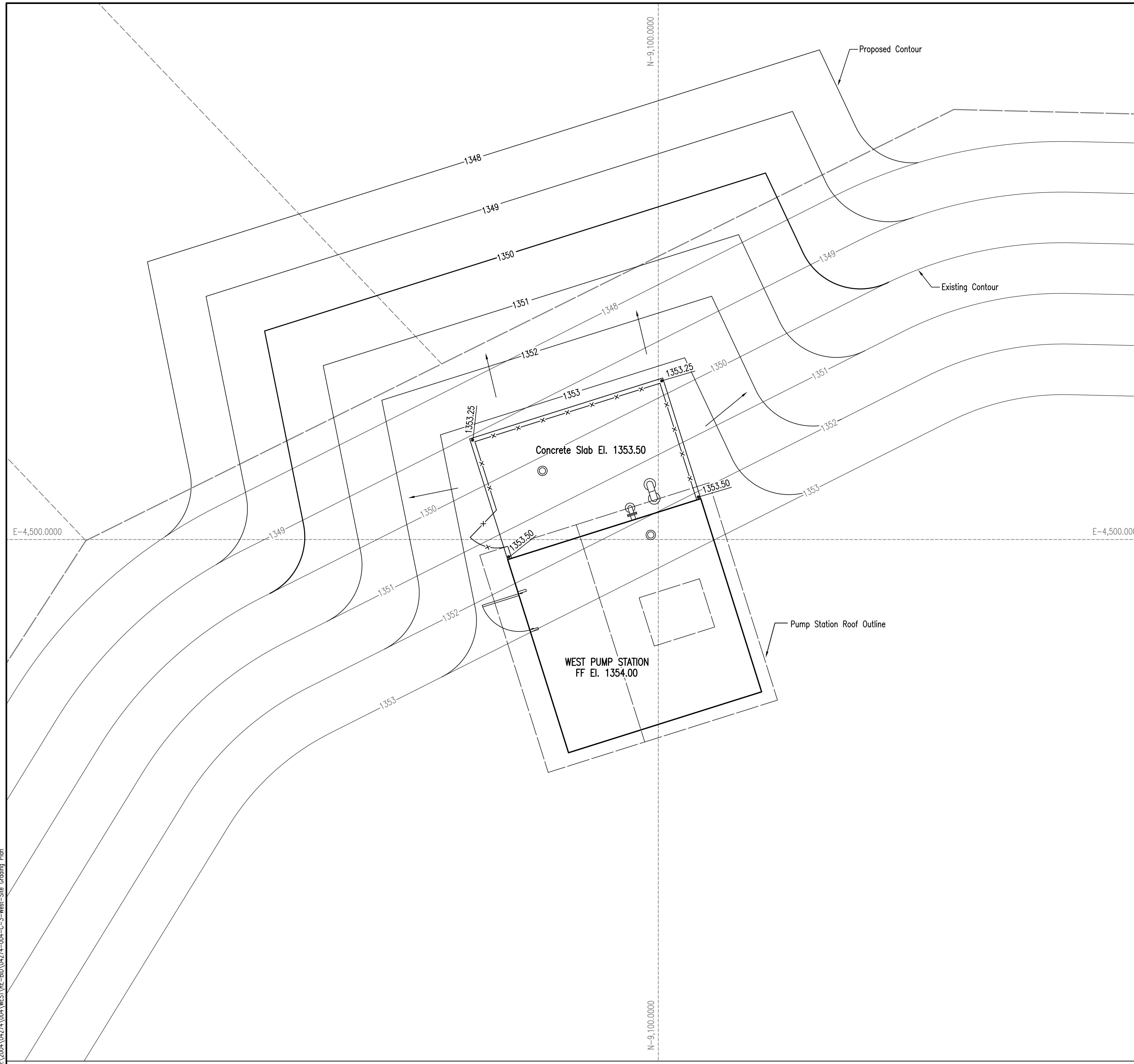


Saved: 09-29-2009 11:16:39 AM by CAE  
 Plot Scale: 1/4" = 1'-0" 09-29-2009 12:41:17 PM by CAE  
 C:\2009\04274\004\WEST\RE-BID\04274-004-C-3-West-Site Grading Plan



- LEGEND**
- 1338.32 Proposed Pavement Elevation
  - 42.4 Proposed Ground Elevation
  - ↘ Denotes direction of Drainage

No.	Revision	By	Date
<b>PHASE II - STORM WATER DRAIN #332</b> <b>SITE GRADING PLAN FOR</b> <b>WEST PUMP STATION</b> JAMES L. ARMOUR, P.E. - CITY ENGINEER CITY OF WICHITA PROJECT NO. 468-84396			
<b>Professional Engineering Consultants, P.A.</b> 303 S. TOPEKA • WICHITA, KANSAS 67202 316-262-2691 • FAX 316-262-3003			
Designed by	EJ, SCU	Job No.	35-04274-042
Drawn by	CAE	Date	SEPTEMBER 2009
			Sht. 3 of 63

