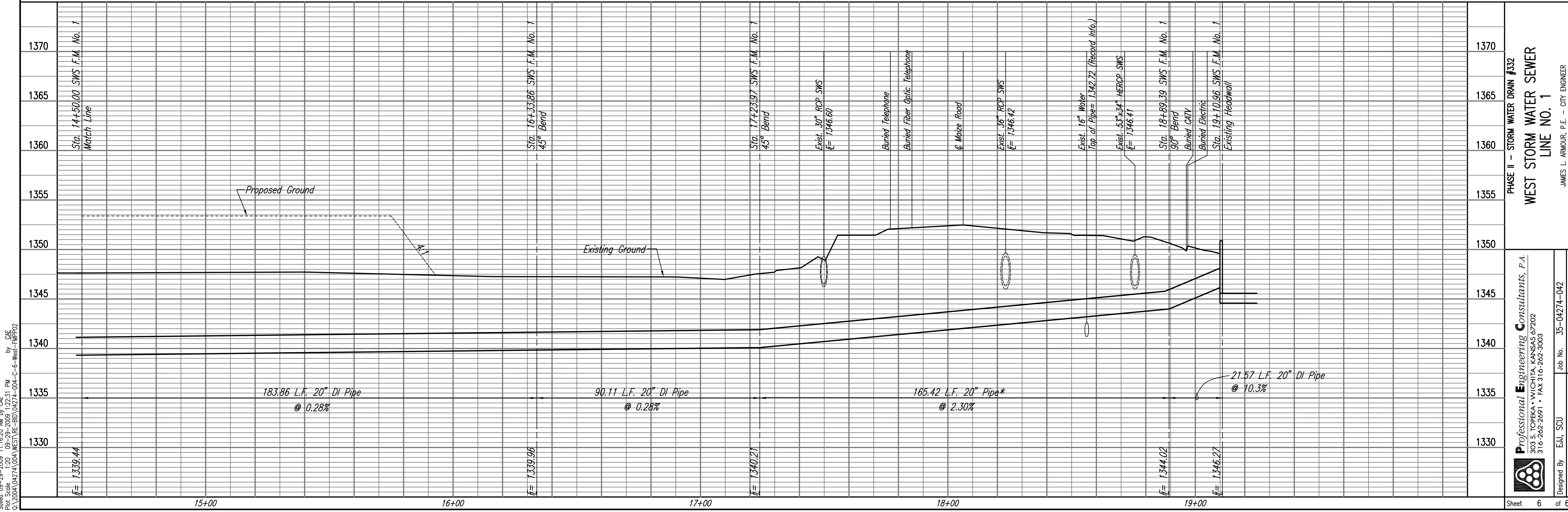


**\* NOTE:**  
 Directional Drill may be performed using 20" Certa-Lok DR21 PVC Pipe or 20" DR11 Polyethylene Pipe (D.I.P.S.). Contractor will be required to provide adaptors as needed to transition to the Polyethylene Pipe. Contractor may drill additional length other than shown on the plans, at no additional cost to the project.



PHASE II - STORM WATER DRAIN #332  
 WEST STORM WATER SEWER  
 LINE NO. 1

Professional Engineering Consultants, P.A.  
 803 S. TOPKA AVENUE, KANSAS CITY, MO 64108  
 316-262-2691 • FAX 316-262-3003

Designed By: E.J. SCU  
 Drawn By: CAE

Job No.: 35-04274-042  
 Date: SEPTEMBER 2009

Professional Engineer  
 JAMES L. ARMOUR, P.E. - CITY ENGINEER  
 CITY OF WICHITA, PRIVATE PROJECT NO. 488-84396

Save: 09-29-2009 11:16:20 AM by: CAE  
 Plot Scale: 1"=20' 09-29-2009 1:22:51 PM  
 CA: 2009\04274\004\WEST\RE-BID\04274-004-C-West-FWP02