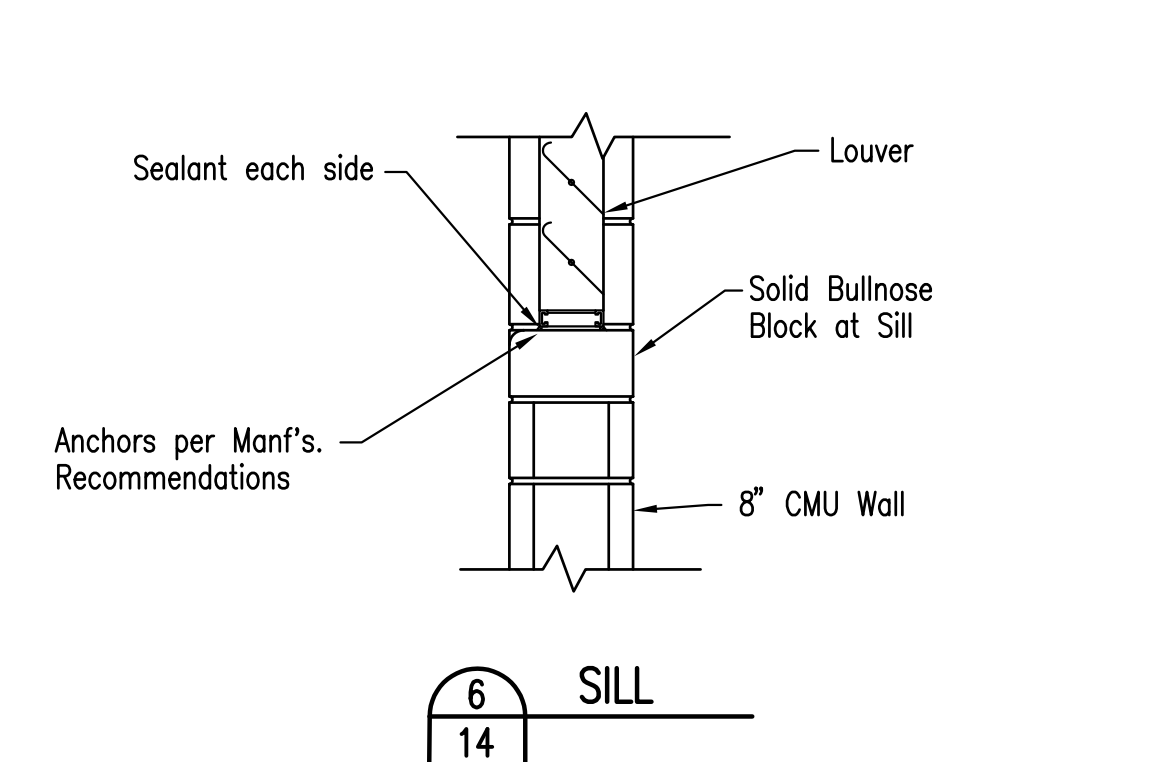
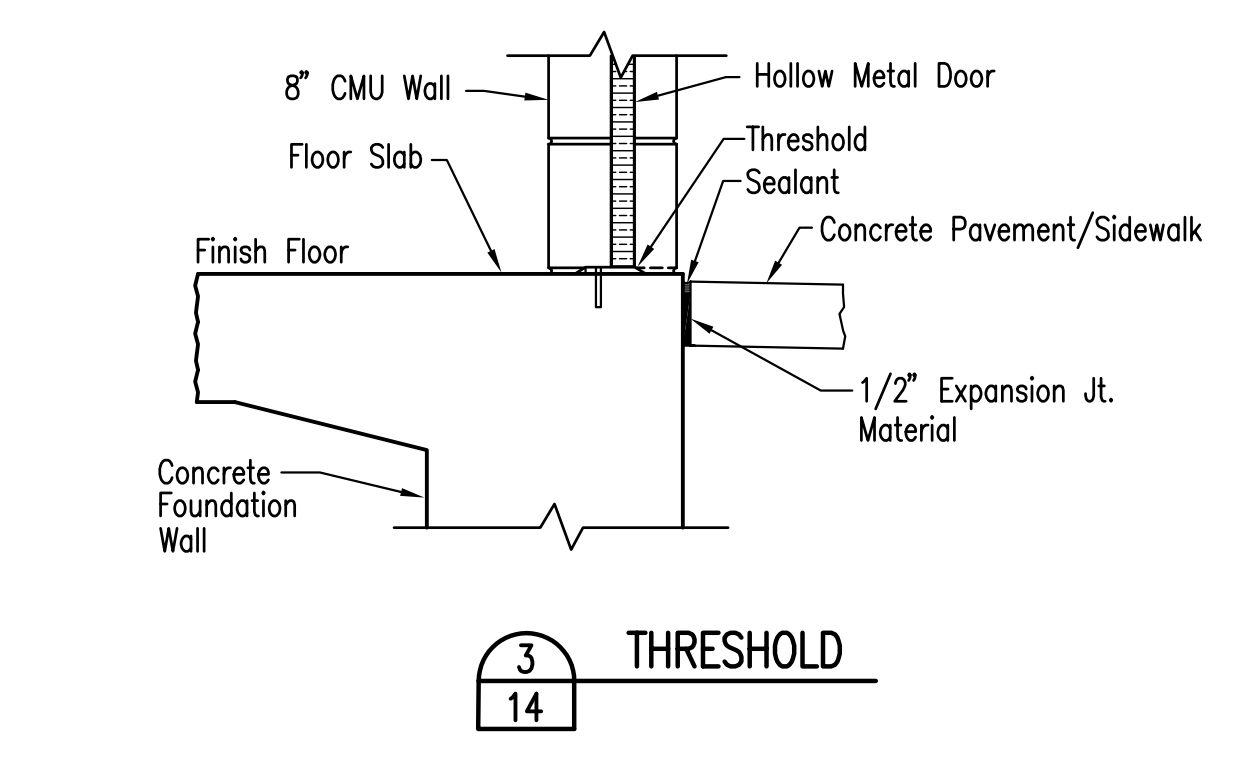
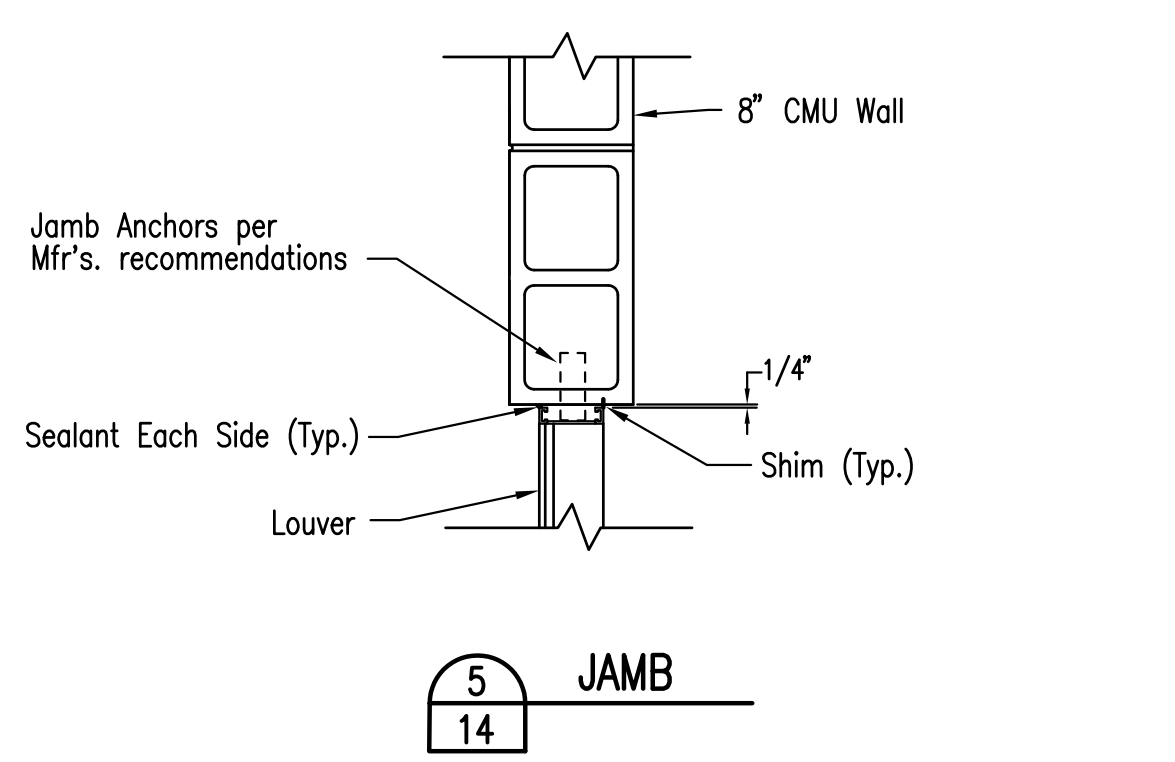
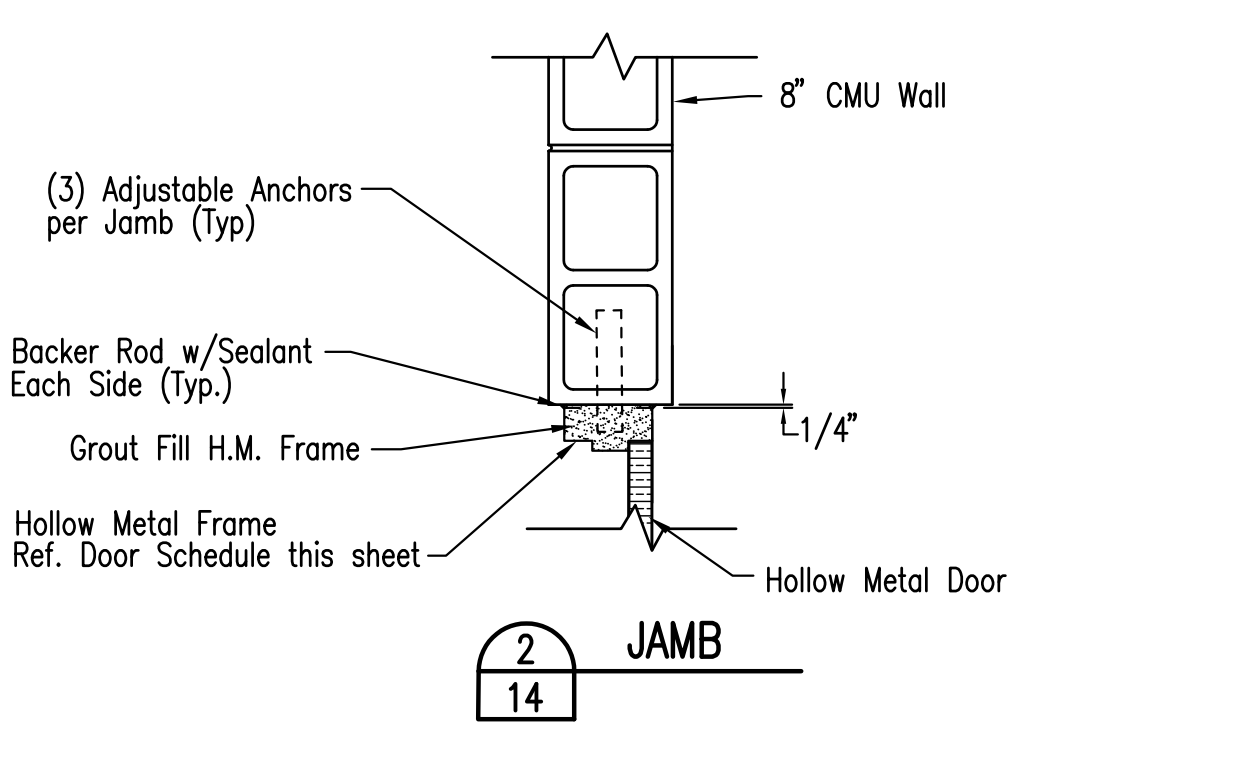
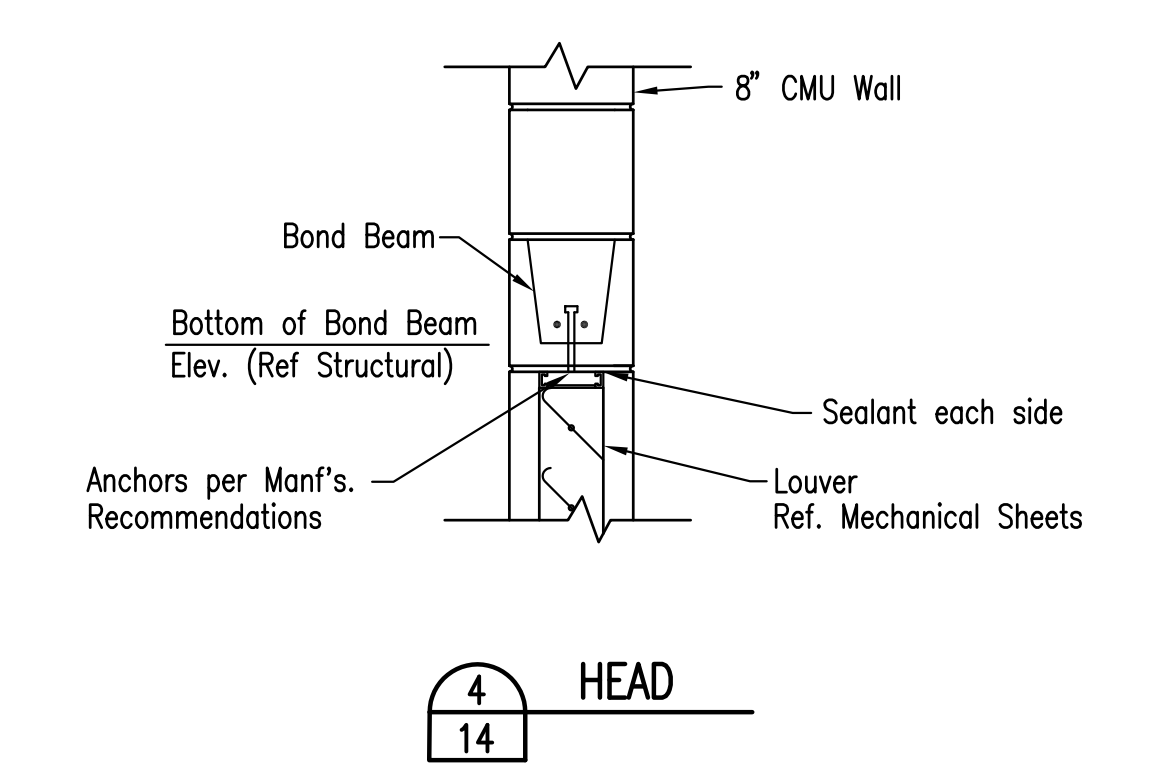
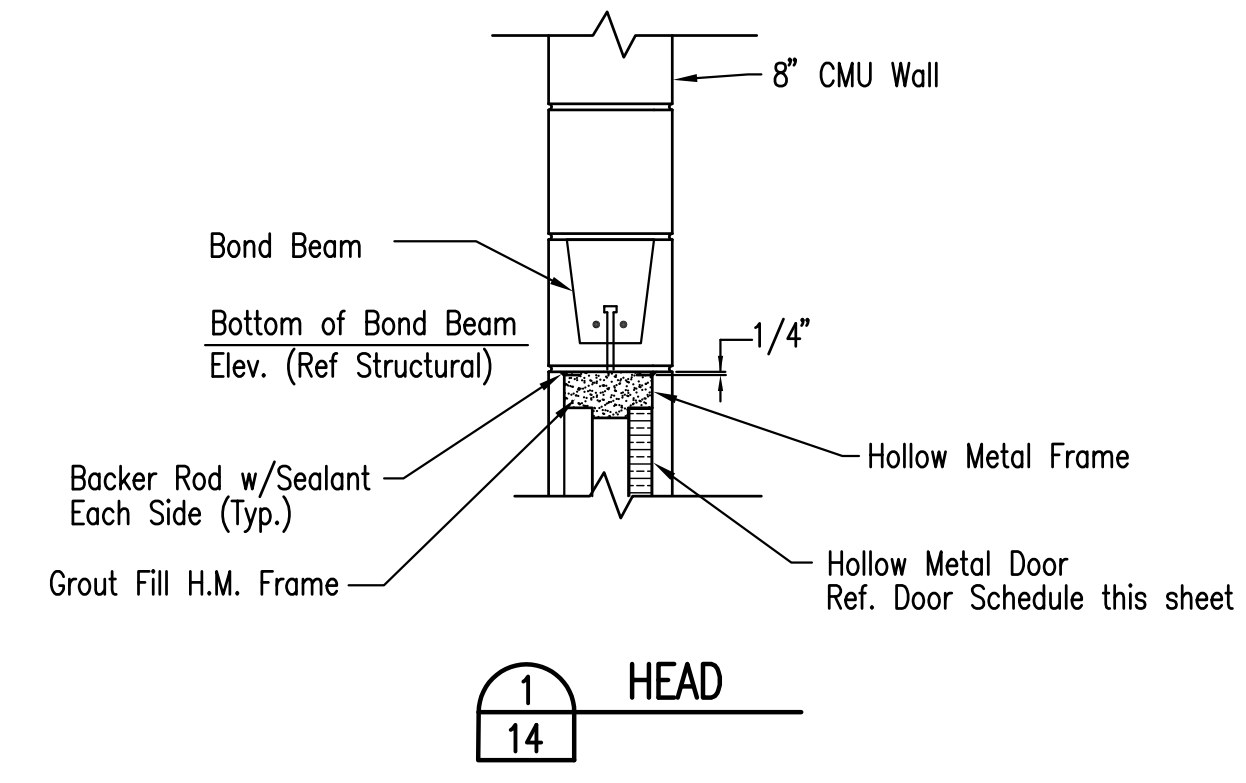
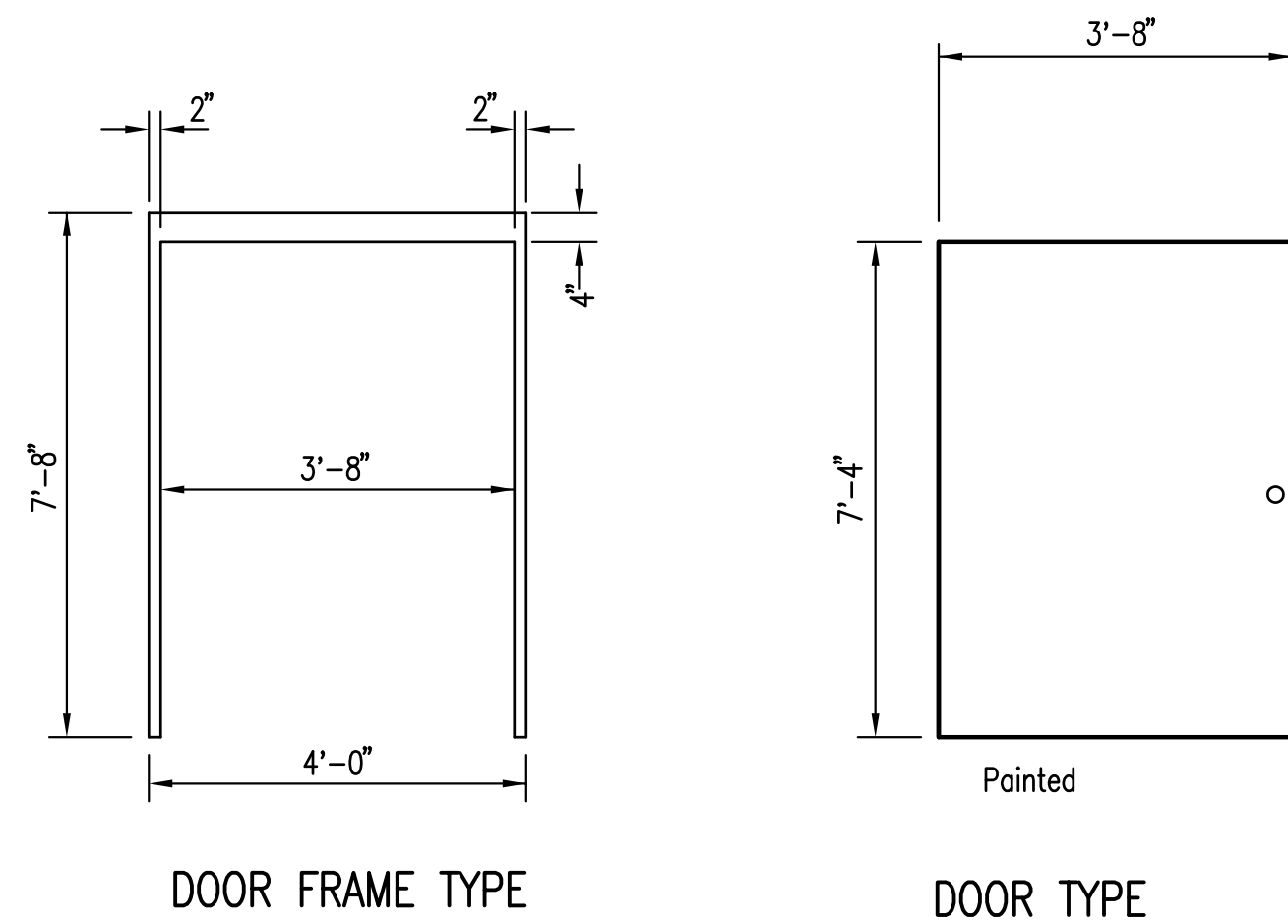


DOOR SCHEDULE

DOOR SIZE	DOOR MATERIAL	FINISH	FRAME TYPE	REMARKS
3'-8" x 7'-0"	HOLLOW METAL INSULATED	EPOXY	HOLLOW METAL	FINISH PER SPECIFICATION SECTION 09960, PART 2.3 COATING SYSTEMS FOR GALVANIZED STEEL AND NONFERROUS METAL-INTERIOR OR EXTERIOR

DOOR HARDWARE (SINGLE DOOR)

3- HINGES	BUTTS FBB191 4 1/2 x 4 1/2 - NRP	STANLEY
1- LOCKSET	1- LOCKSET	SCHLAGE LOCK
1- BOLTS	1- BOLTS	GLYNN-JOHNSON CORP.
1- DOOR CLOSER	411-H-CUSH-689XSRI	LCN
1- THRESHOLD	171A-44"	PEMKO
1- DOOR BOTTOM	18062CP-44"	PEMKO
1- ROLL GASKETING	S88D-17"-8"	PEMKO
1- RAIN DRIP	346C-48"	PEMKO
1- DOOR STOP	FS544	IVES



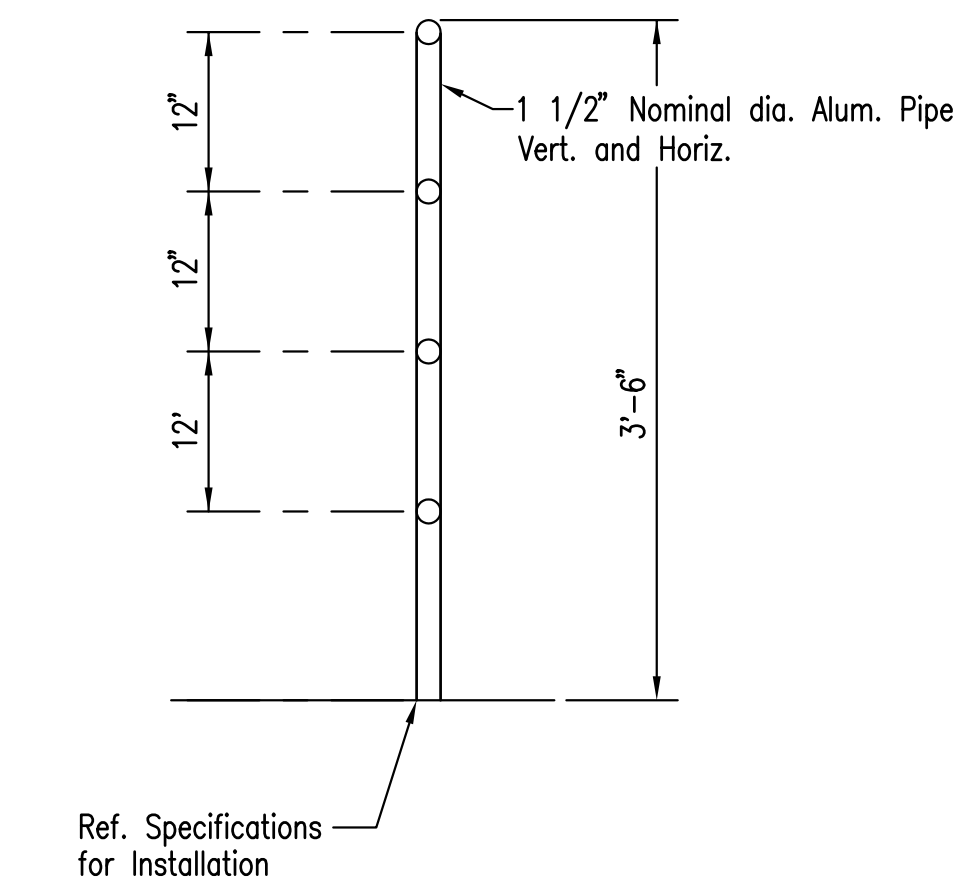
EXTERIOR DOOR DETAILS
1" = 1'-0"

LOUVER DETAILS
1" = 1'-0"

LOCATION	FLOOR	INT. WALLS	EXT. WALLS	CEILING	MISC. STEEL	EQUIPMENT	PIPING
	SEALED CONCRETE EPOXY	SPECIFICATION SECTION CONCRETE/MASONRY IMMERSED CONCRETE/MASONRY EXPOSED POROUS CONCRETE/MASONRY WOOD	SPECIFICATION SECTION CONCRETE/MASONRY EXPOSED CONCRETE/MASONRY BELOW GRADE POROUS CONCRETE/MASONRY EXPOSED CONCRETE/MASONRY EXPOSED CLEAR	SPECIFICATION SECTION CONCRETE IMMERSED CONCRETE EXPOSED POROUS CONCRETE Gypsum	SPECIFICATION SECTION	SPECIFICATION SECTION	SPECIFICATION SECTION
WETWELL	N/A	N/A	N/A	N/A	09960	09960	09960
PUMP STATION	X	X	X	*	09960	09960	09960

* CEILING TO BE PRE-FINISHED METAL PANELS PER SHEET 13.

- GENERAL NOTES:
- COATINGS IN CONTACT WITH POTABLE WATER MUST COMPLY WITH AWWA AND NSF.
 - STEEL DESIGNATION INCLUDES STRUCTURAL, TANKS, PIPE AND EQUIPMENT.
 - SURFACES NOT TO BE PAINTED:
ALUMINUM, GALVANIZED, FIBERGLASS, INSULATED PIPE & STAINLESS STEEL.



HANDRAIL DETAIL
NOT TO SCALE

Saved: 09-29-2009 11:18:22 AM by: CAE
 Plot Scale: 1" = 1'-0" 09-29-2009 1:18:12 PM
 CA: 2009 04274 004 WEST RE-BID 04274-004-C-14-West-BldgDetail

No.	Revision	By	Date
PHASE II - STORM WATER DRAIN #332 WEST PUMP STATION BUILDING DETAILS JAMES L. ARMOUR, P.E. - CITY ENGINEER CITY OF WICHITA PROJECT NO. 468-84396			
Professional Engineering Consultants, P.A. 303 S. TOPEKA • WICHITA, KANSAS 67202 316-262-2691 • FAX 316-262-3003			
Designed by	EJ, SCU	Job No.	35-04274-042
Drawn by	CAE	Date	SEPTEMBER 2009
			Sht. 14 of 63