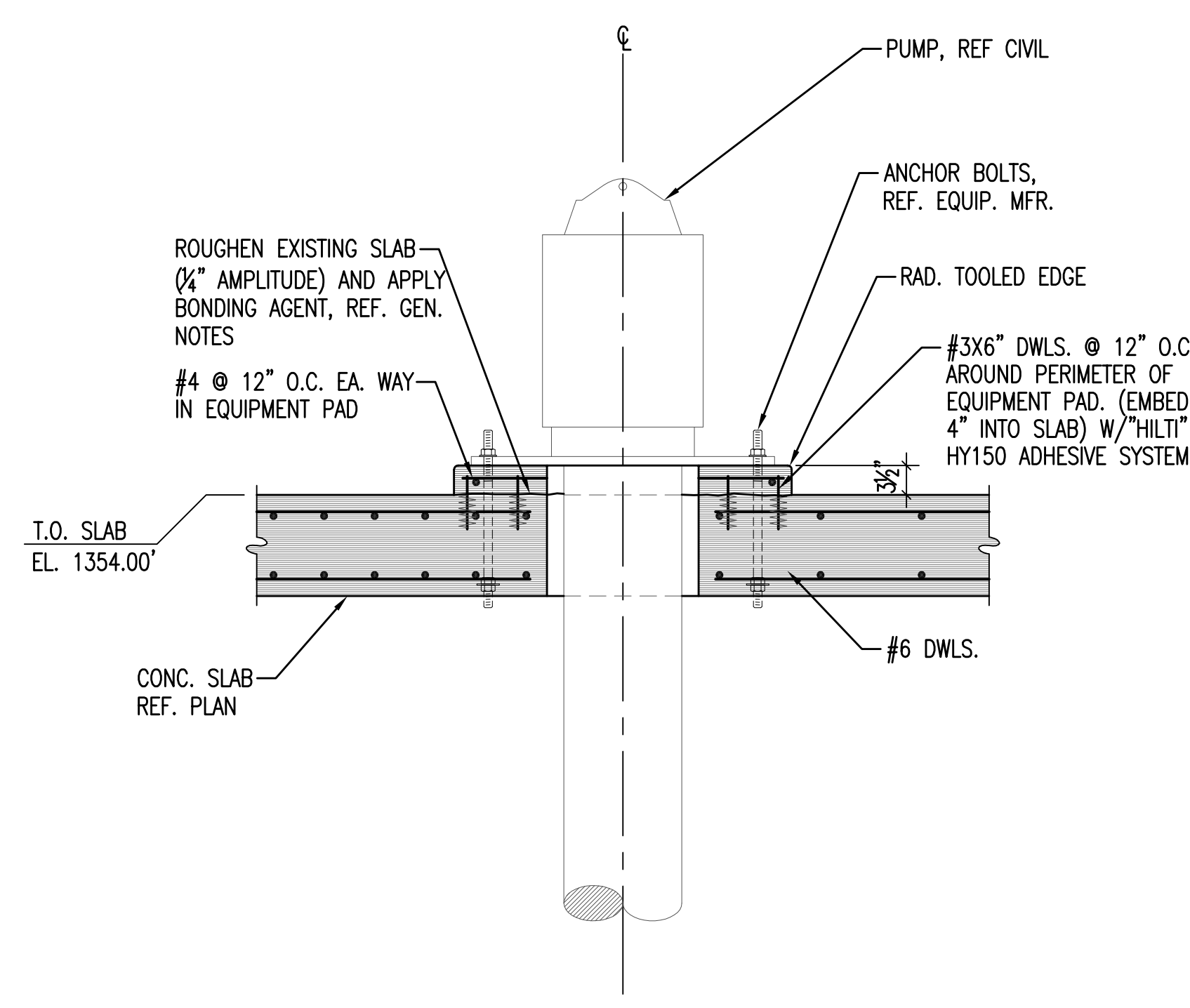
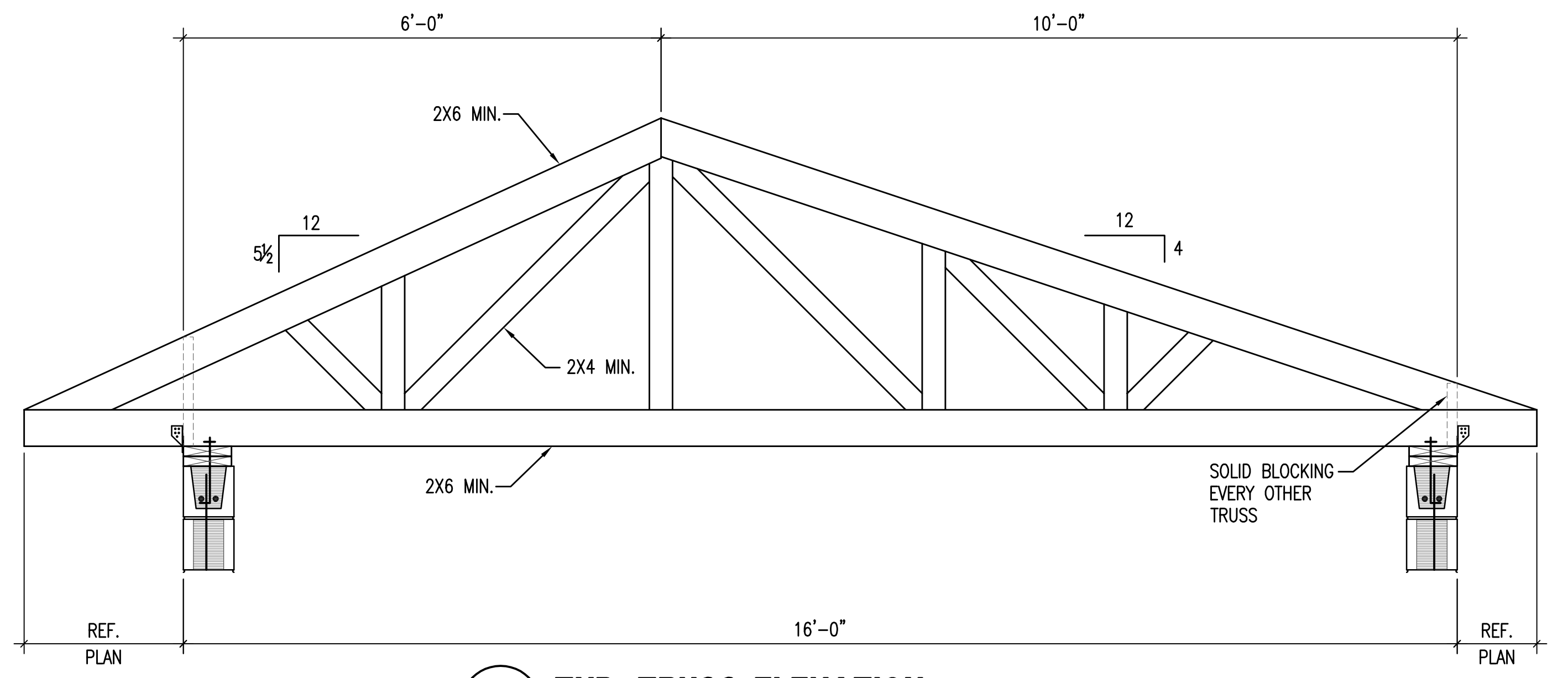


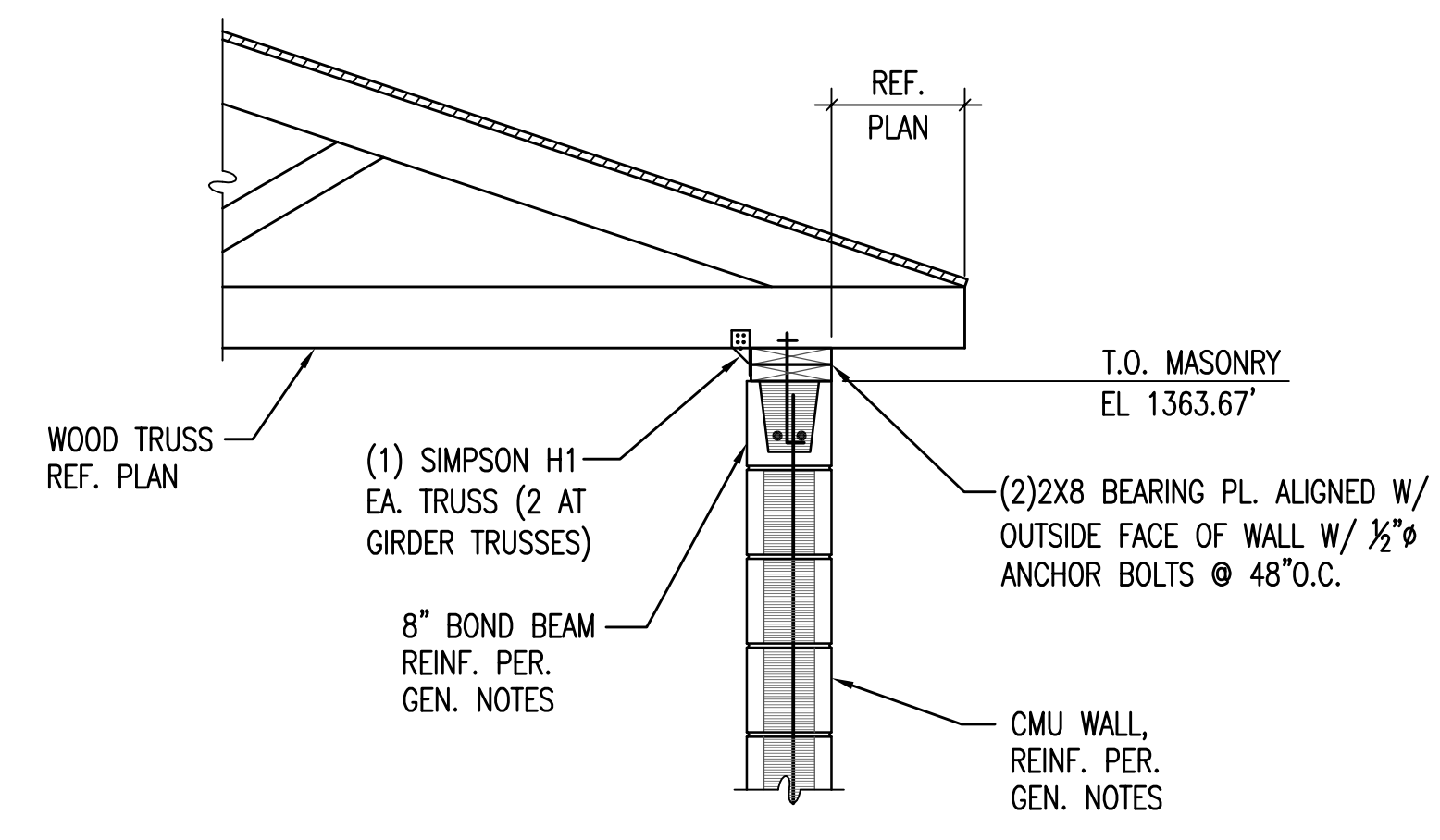
1 **TYP. EXT. WALL SECTION**
18 3/4"=1'-0"



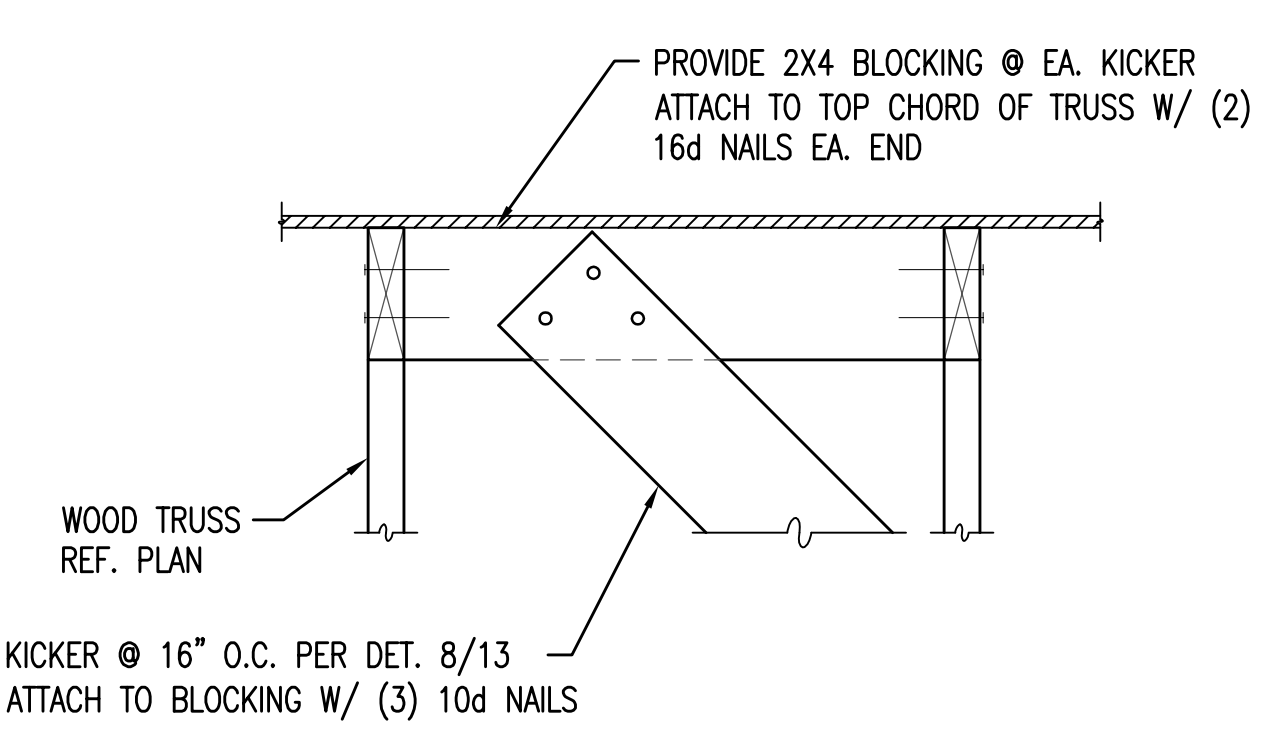
2 **SECTION AT EQUIP. PAD**
18 3/4"=1'-0"



3 **TYP. TRUSS ELEVATION**
18 3/4"=1'-0"



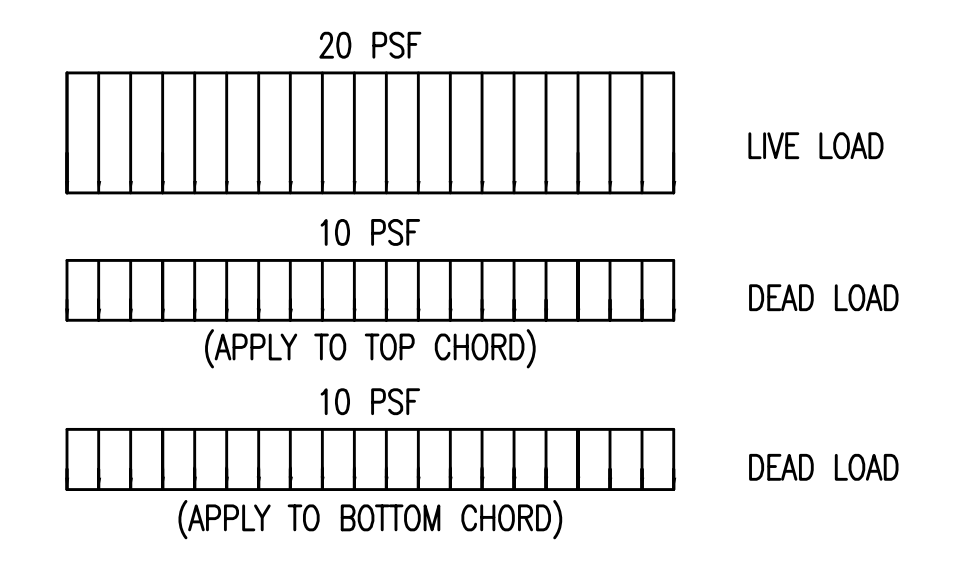
4 **TYP. TRUSS BEARING DETAIL**
18 3/4"=1'-0"



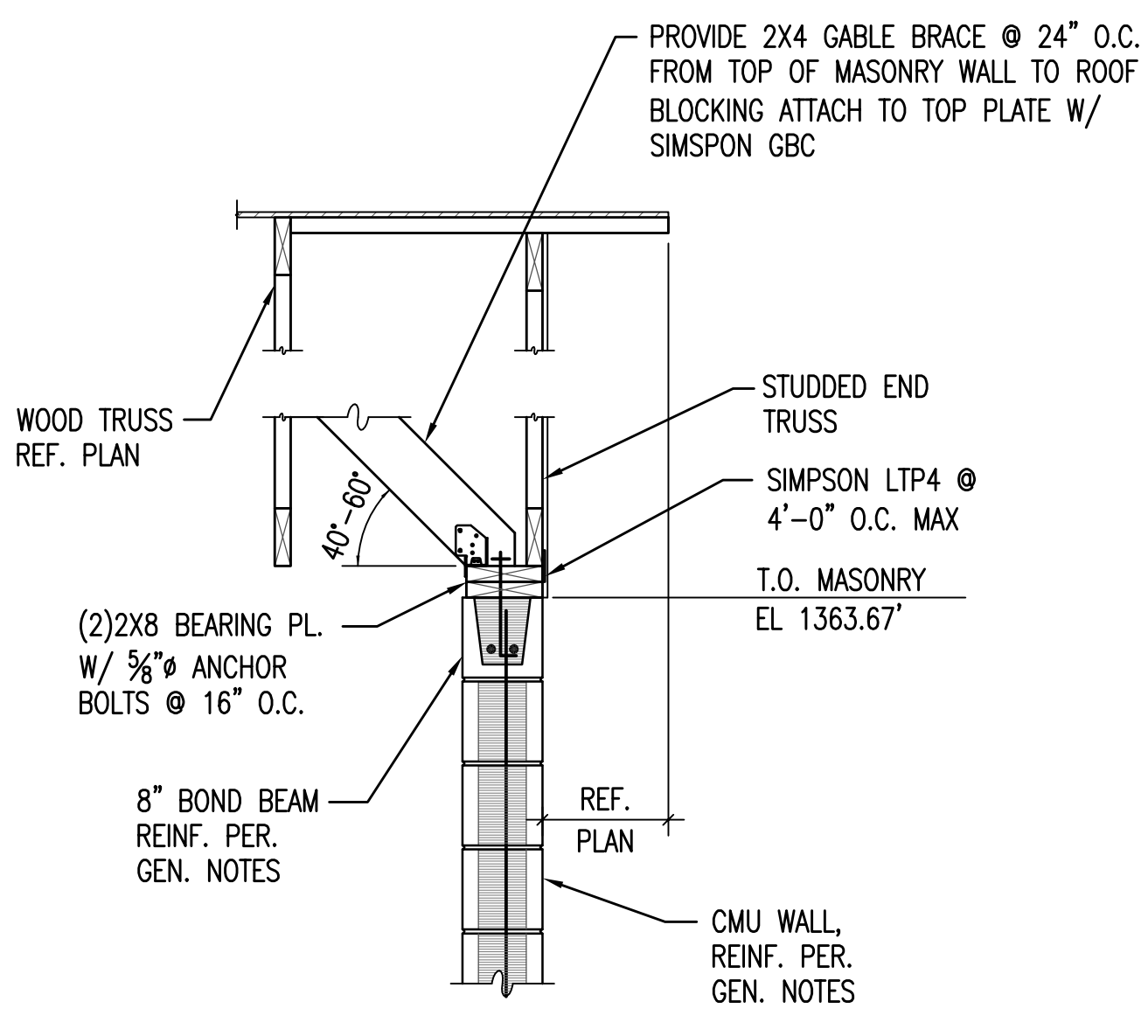
5 **TYP. KICKER DETAIL AT ROOF**
18 1 1/2"=1'-0"

TRUSS NOTES:

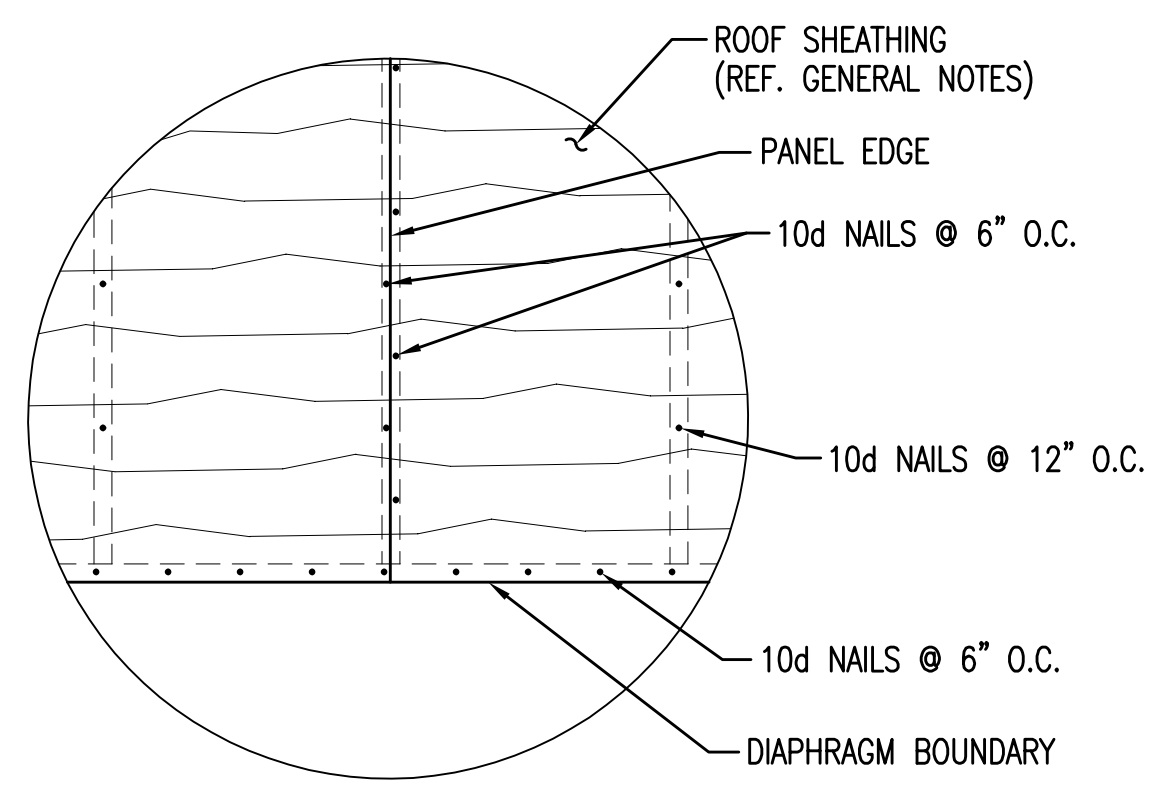
1. TRUSS DRAWINGS ARE PROVIDED FOR CONCEPTUAL DESIGN ONLY. ENGINEERED DRAWINGS & CALCULATIONS SHALL BE SUBMITTED TO THE OWNER AND THE ENGINEER OF RECORD, PRIOR TO INSTALLATION. DRAWINGS AND CALCULATIONS SHALL BE SEALED BY A STRUCTURAL ENGINEER LICENSED IN THE STATE WHERE THE PROJECT IS LOCATED PRIOR TO SUBMITTAL.
2. ROOF CONNECTORS SHALL BE SIMPSON STRONG-TIE.
3. TRUSSES ON SITE PRIOR TO INSTALLATION SHALL BE STORED IN A VERTICAL POSITION WITH SUPPORT POINTS PROVIDED AT FINAL BEARING POINTS AND BRACED TO AVOID TIPPING.
4. INSTALLATION OF ALL TRUSSES SHALL BE DONE USING A SPREADER BAR WITH A THREE POINT VERTICAL PICK AND CARE IS TO BE USED IN LIFTING TO MINIMIZE HORIZONTAL BENDING.
5. IMPROPER HANDLING OF THE TRUSSES AS NOTED ABOVE AND IN THE SPECIFICATIONS SHALL MEAN REMOVAL OF THE TRUSSES FROM THE JOB SITE.
6. DOUBLE TRUSSES TO BE NAILED TOGETHER W/ 10d @ 12" O.C. EACH SIDE, TOP & BOTTOM CHORDS & WEBS.
7. SEE DIVISION SIX OF THE SPECIFICATIONS FOR DETAILS ON TRUSS MANUFACTURING AND NAILING.
8. TRUSS TO TRUSS CONNECTIONS SHALL BE VERIFIED BY THE TRUSS DESIGNER.



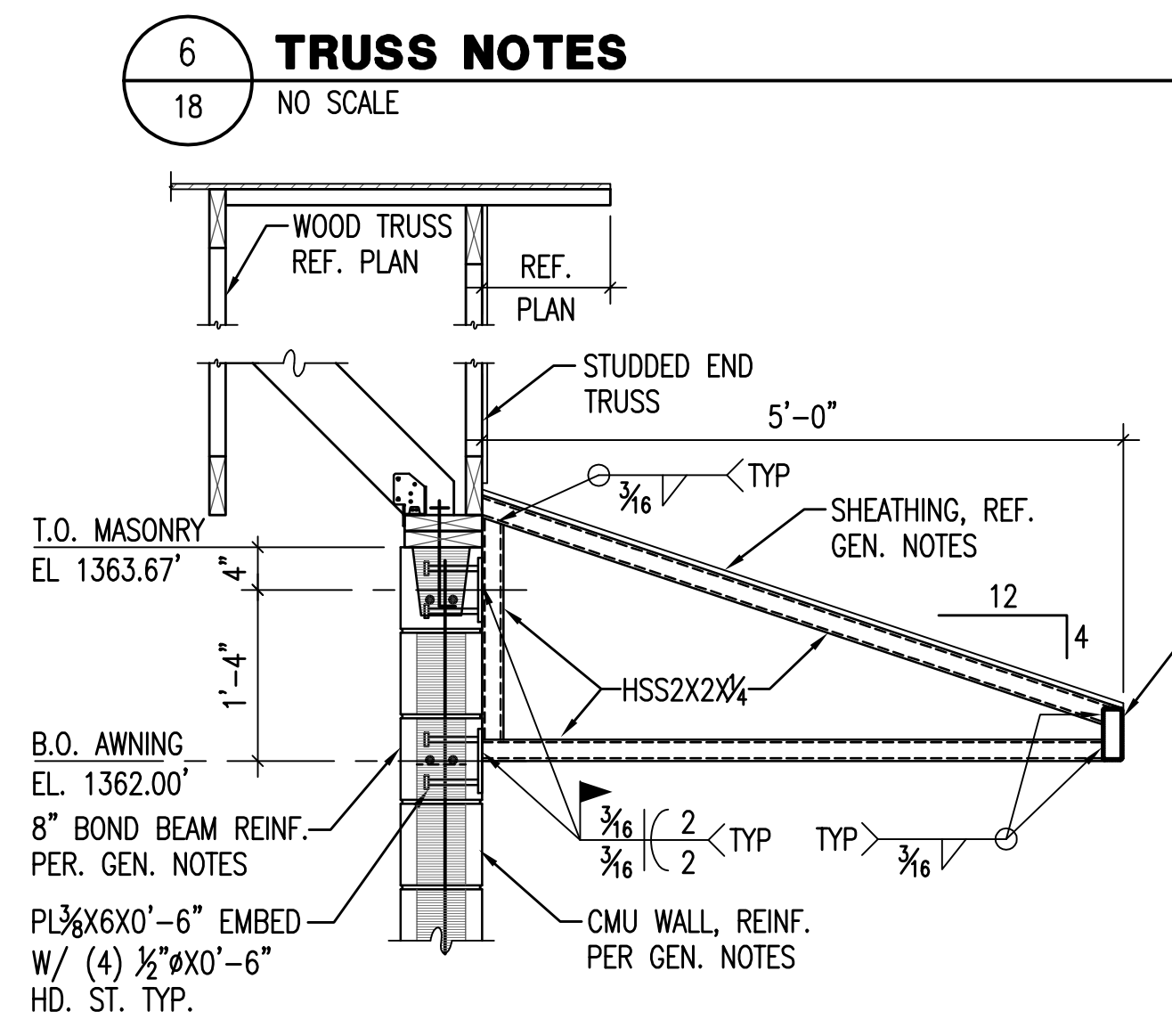
NOTE: SNOW DRIFT AND UNBALANCED SNOW LOADING SHALL BE INCORPORATED INTO THE TRUSS DESIGN.



8 **TYP. END TRUSS DETAIL**
18 3/4"=1'-0"



9 **ROOF SHEATHING FASTENING DETAIL**
18 NO SCALE

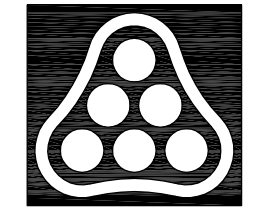


10 **ELECTRICAL GEAR AWNING SECTION**
18 3/4"=1'-0"

6 **TRUSS NOTES**
18 NO SCALE

7 **TRUSS LOADING**
18 NO SCALE

Saved: 09-29-2009 11:22:16 AM by DCC
 Plot Scale: 1:16 09-29-2009 11:22:34 AM
 S:\2009\04274\004\WESTY\RE-BID\04274-18-DTL5 by DCC



No.	Revision	By	Date
PHASE II - STORM WATER DRAIN #332 WEST PUMP STATION STRUCTURAL DETAILS JAMES L. ARMOUR, P.E. - CITY ENGINEER CITY OF WICHITA PROJECT NO. 468-84396 Professional Engineering Consultants, P.A. 303 S. TOPEKA • WICHITA, KANSAS 67202 316-262-2691 • FAX 316-262-3003			
Designed by	GB	Job No.	35-04274-042
Drawn by	DC	Date	SEPTEMBER 2009
			Sht. 18 of 63