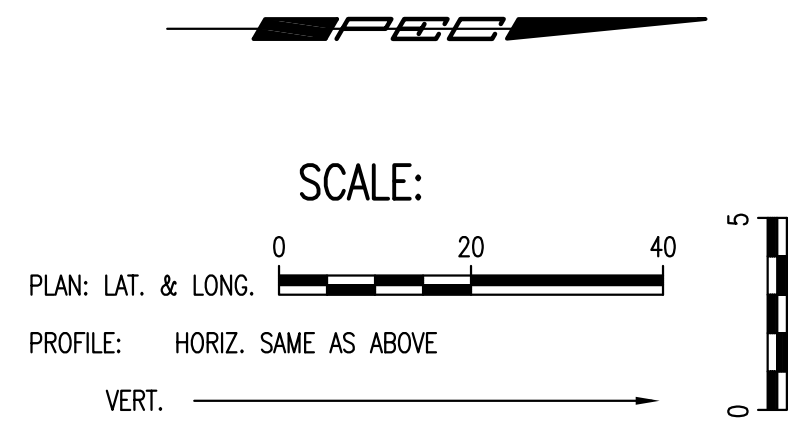


N-4,421.2085 ±, E-11,558.0386 ±
 End of Existing 36" SWS Pipe
 El. 1344.29
 Sta. 0+00.00, SWS Gravity Line No. 4
 Begin 36" SWS Line No. 4
 Connect New 36" Storm Water Sewer
 Extension Pipe to the existing Pipe.
 Fittings and Adaptors as required.

N-4,511.8035, E-11,558.2172
 Sta. 0+90.46 SWS Line No. 4
 Deflect Pipe 0°30'-1"

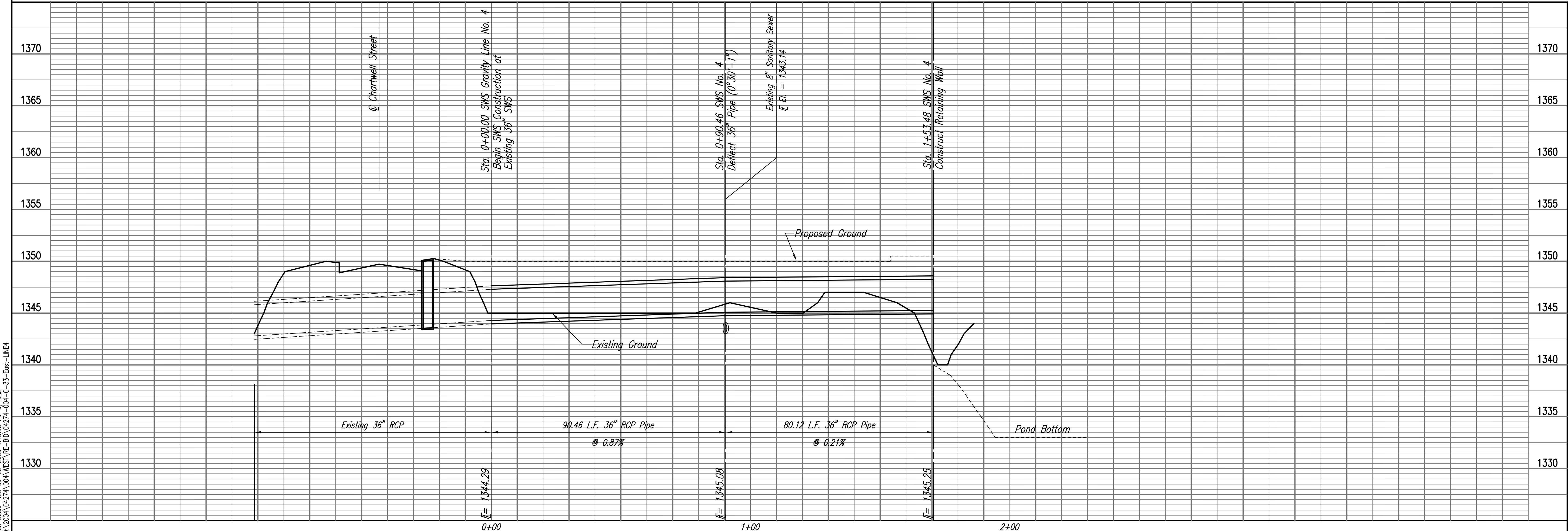
CAUTION !!!
 8" Sanitary Sewer
 Concrete Encase 10'
 either side of Proposed
 36" SWS Line No. 4
 Ref. Detail, Sheet 31

N-4,591.7858, E-11,558.2172
 Sta. 1+53.48, SWS Gravity Line No. 4
 Construct Retaining Wall
 Ref. Structural Sheets



PRIOR TO BEGINNING CONSTRUCTION, THE CONTRACTOR SHALL EXCAVATE THE EXISTING 36" RCP AT STATION 0+00.00 TO VERIFY ITS HORIZONTAL AND VERTICAL LOCATION. THE PIPE LOCATION SHALL BE REPORTED TO THE ENGINEER SO THAT ANY NECESSARY PLAN MODIFICATIONS CAN BE MADE.

STORM WATER SEWER GRAVITY LINE NO. 4



09-29-2009 11:27:30 AM by CAE
 Plot Scale 1:20 09-29-2009 1:43:35 PM
 CA 2004 04274 004 WEST RE-80 04274-004-C-33-East-LINE4

Professional Engineering Consultants, P.A.
 803 S. TOPICKA AVENUE, WICHITA, KANSAS 67202
 316-262-2691 • FAX 316-262-3003

Designed By: EAJ, SCU
 Drawn By: CAE

Job No.: 35-04274-042
 Date: SEPTEMBER 2009

PHASE II - STORM WATER DRAIN #332
 EAST STORM WATER SEWER
 GRAVITY LINE NO. 4
 JAMES L. ARMOUR, P.E. - CITY ENGINEER
 CITY OF WICHITA PROJECT NO. 468-64396

Sheet 33 of 63